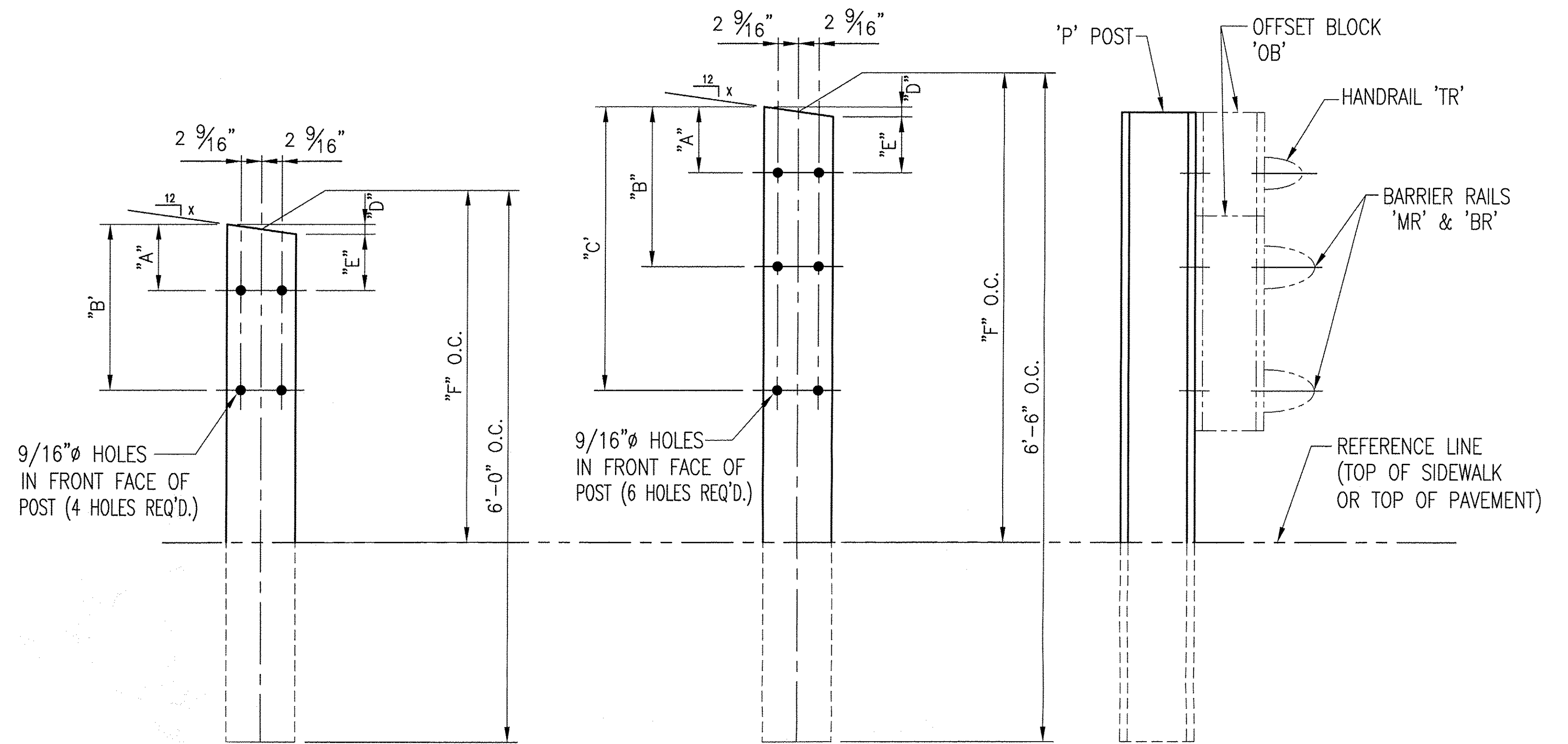


POST DETAIL CHART FOR NE APPROACH 

		OFFSET BLOCK MTG. DIMENSIONS						BEV
POST No.	QTY.	A	B	C	D	E	F (O.C.)	X
P8	1	1 7/8"	1'-1 3/8"	2'-6 9/16"	5/8"	1 1/4"	4'-1 7/8"	1 1/16"
P9	1	1 7/8"	11 11/16"	2'-3 9/16"	5/8"	1 1/4"	3'-10 9/16"	1 1/16"
P10	1	1 7/8"	10"	2'-0 9/16"	5/8"	1 1/4"	3'-7 1/4"	1 1/16"
P11	1	1 7/8"	8 5/16"	1'-9 5/8"	5/8"	1 1/4"	3'-3 15/16"	1 1/16"
P12	1	2 3/16"	1'-1 11/16"		5/16"	1 13/16"	2'-7 11/16"	9/16"
P13	1	2 3/16"	11 15/16"		5/16"	1 13/16"	2'-5 1/2"	9/16"
P14	1	2 3/16"	10 1/4"		5/16"	1 13/16"	2'-3 1/4"	9/16"

POST DETAIL CHART FOR SW APPROACH 

		OFFSET BLOCK MTG. DIMENSIONS						BEV
POST No.	QTY.	A	B	C	D	E	F (O.C.)	X
P15	1	1 3/4"	1'-1 1/4"	2'-1 13/16"	7/16"	1 3/8"	3'-4 11/16"	11/16"
P16	1	1 3/4"	11 9/16"	1'-11 7/16"	7/16"	1 3/8"	3'-2 5/8"	11/16"
P17	1	1 3/4"	9 7/8"	1'-9 1/16"	7/16"	1 3/8"	3'-0 9/16"	11/16"
P18	1	1 3/4"	8 3/16"	1'-6 3/4"	7/16"	1 3/8"	2'-10 1/2"	11/16"
P19	1	2"	11 11/16"		1/16"	1 15/16"	2'-3 15/16"	1/8"
P20	1	2"	10 3/4"		1/16"	1 15/16"	2'-3 3/8"	1/8"
P21	1	2"	9 7/8"		1/16"	1 15/16"	2'-2 13/16"	1/8"

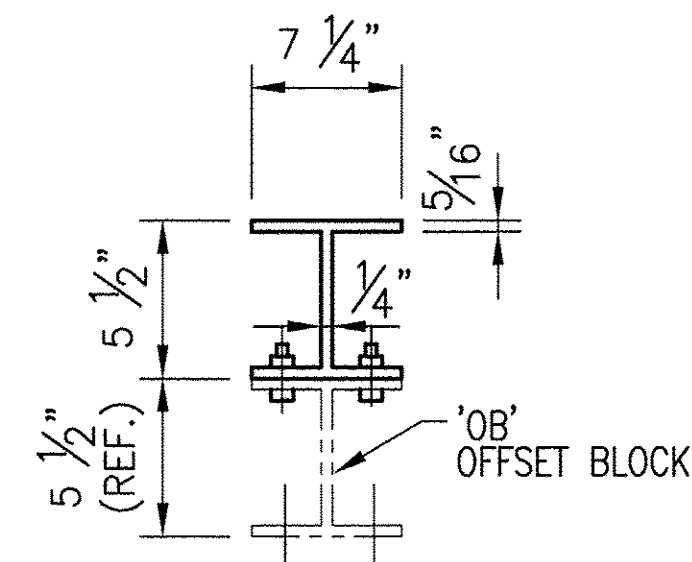


FRT ELEV VIEW

P12 - P14  
P19 - P21

FRT ELEV VIEW

P8 - P11  
P15 - P18



TYP. SECT. POST &  
OFFSET BLOCK

**ANODIZED**  
(SEE NOTES ON LB1)

<input checked="" type="checkbox"/>	No Description Taken	T-Y-LIN INTERNATIONAL
<input type="checkbox"/>	Make Correction as Noted	
<input type="checkbox"/>	Submit Specified Item	
<input type="checkbox"/>	Revise and Resubmit as Noted	
<input type="checkbox"/>	Rejected	

Checking is for general compliance with the design concept of the project and general compliance with the information given in the contract documents only. Any action shown is not an approval and is subject to the requirements of the plans and specifications. Any action shown on a specific item shall not indicate the checking of an assembly of which the item is a component. Contractor is solely responsible for dimensions which shall be confirmed and corrected at the job site, fabrication processes, techniques of construction, safety precautions, and coordination of the work with that of all other trades and the satisfactory performance of the work.

Reviewed By: Shanta Keller Date: 3/31/10

BRIDGE No. 30  
PROJECT No. BHF 0283 (9) S ITEM No: 621.745

APPROVED: \_\_\_\_\_ REC'D APPROVAL \_\_\_\_\_  
DRAWING \_\_\_\_\_

**L.B. FOSTER COMPANY**  
1016 GREENTREE ROAD  
PITTSBURGH, PENNSYLVANIA 15220

FOR: A.D. ROSSI CORPORATION  
VERMONT DEPARTMENT OF TRANSPORTATION  
TOWN OF BERKSHIRE, COUNTY OF FRANKLIN  
3-LINE SEMI-ELLIP. ALUM. APPROACH RAIL FOR VT RTE 118  
3L ALUMINUM APPROACH RAIL POST DETAILS

1	REVISED DIMENSIONS PER APPROVERS MARKUPS	CMS	03 23 10
REV.	DESCRIPTION	BY	DATE

MADE CMS DATE 02/18/10 JOB No. AR0624 CUST. No. \_\_\_\_\_  
CHECK BLJ DATE 02/25/10 DRAWING LB11 REV. No. ONE