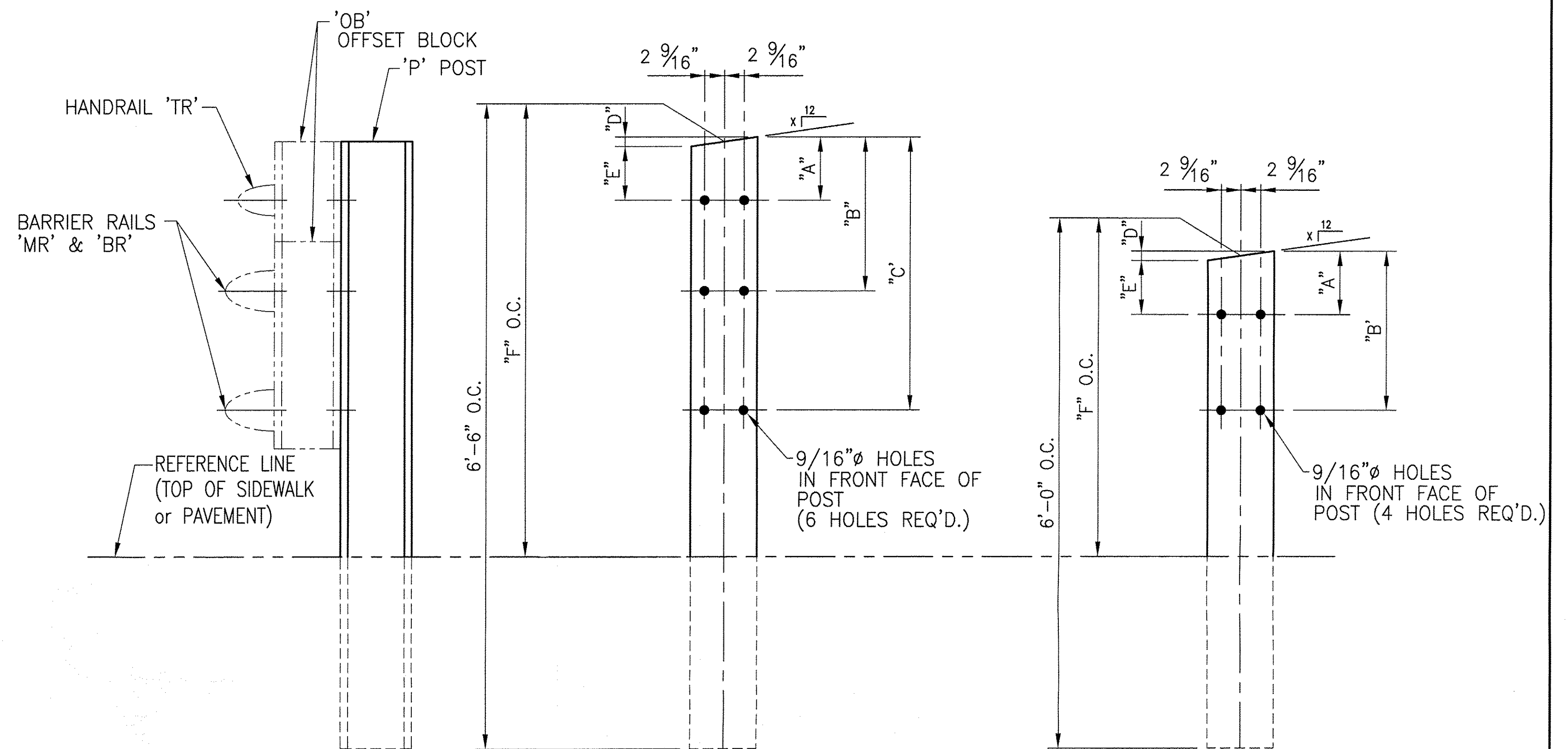


POST DETAIL CHART NW APPROACH \triangle								
		OFFSET BLOCK MTG. DIMENSIONS						BEV
POST No.	QTY.	A	B	C	D	E	F (O.C.)	X
P1	1	1 7/8"	1'-1 3/8"	2'-6 9/16"	5/8"	1 1/4"	4'-1 7/8"	1 1/16"
P2	1	1 7/8"	11 11/16"	2'-3 9/16"	5/8"	1 1/4"	3'-10 9/16"	1 1/16"
P3	1	1 7/8"	10"	2'-0 9/16"	5/8"	1 1/4"	3'-7 1/4"	1 1/16"
P4	1	1 7/8"	8 5/16"	1'-9 5/8"	5/8"	1 1/4"	3'-3 15/16"	1 1/16"
P5	1	2 3/16"	1'-1 11/16"		5/16"	1 13/16"	2'-7 11/16"	9/16"
P6	1	2 3/16"	11 15/16"		5/16"	1 13/16"	2'-5 1/2"	9/16"
P7	1	2 3/16"	10 1/4"		5/16"	1 13/16"	2'-3 1/4"	9/16"

POST DETAIL CHART FOR SE APPROACH \triangle								
		OFFSET BLOCK MTG. DIMENSIONS						BEV
POST No.	QTY.	A	B	C	D	E	F (O.C.)	X
P22	1	1 3/4"	1'-1 1/4"	2'-1 13/16"	7/16"	1 3/8"	3'-4 11/16"	11/16"
P23	1	1 3/4"	11 9/16"	1'-11 7/16"	7/16"	1 3/8"	3'-2 5/8"	11/16"
P24	1	1 3/4"	9 7/8"	1'-9 1/16"	7/16"	1 3/8"	3'-0 9/16"	11/16"
P25	1	1 3/4"	8 3/16"	1'-6 3/4"	7/16"	1 3/8"	2'-10 1/2"	11/16"
P26	1	2"	11 11/16"		1/16"	1 15/16"	2'-3 15/16"	1/8"
P27	1	2"	10 3/4"		1/16"	1 15/16"	2'-3 3/8"	1/8"
P28	1	2"	9 7/8"		1/16"	1 15/16"	2'-2 13/16"	1/8"

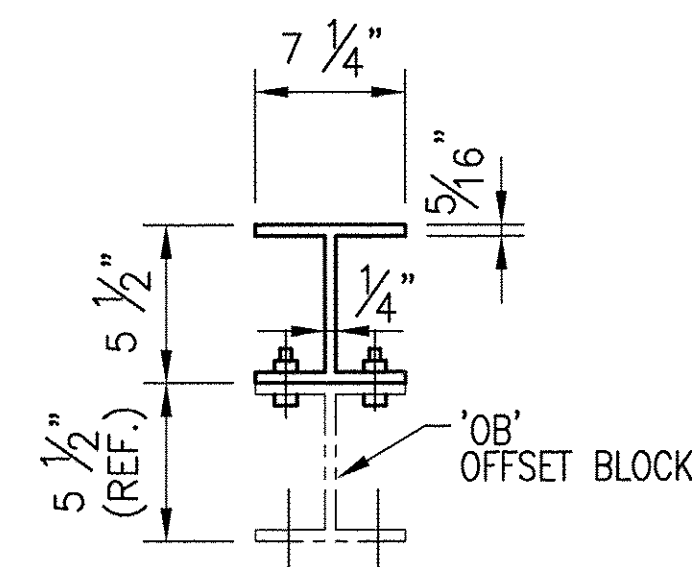


FRT VIEW

P1 - P4
P22 - P25

FRT VIEW

P5 - P7
P26 - P28



TYP. SECT. POST & OFFSET BLOCK

ANODIZED
(SEE NOTES ON LB1)

X	As Specified	T-Y-JUNTERNAIONAL
—	Make Correction as Noted	
—	Substit Specified Item	
—	Revise and Resubmit as Noted	
—	Rejected	

Checking is for general compliance with the design concept of the project and general compliance with the information given in the contract documents only. Any action shown is not an approval and is subject to the requirements of the plans and specifications. Any action shown on a specific item shall not indicate the checking of an assembly of which the item is a component. Contractor is solely responsible for: dimensions which shall be confirmed and correlated at the job site, fabrication processes, techniques of construction, safety precautions; and coordination of its work with that of all other trades and the satisfactory performance of its work.

Reviewed By: Shanta Keller Date: 3/31/10

BRIDGE No. 30
PROJECT No. BHF 0283 (9) S
ITEM No: 621.745

APPROVED: _____	REC'D APPROVAL _____
DRAWING _____	

L.B. FOSTER COMPANY
1016 GREENTREE ROAD
PITTSBURGH, PENNSYLVANIA 15220

FOR: A.D. ROSSI CORPORATION
VERMONT AGENCY OF TRANSPORTATION
TOWN OF BERKSHIRE, COUNTY OF FRANKLIN
3-LINE SEMI-ELLIP. ALUM. APPROACH RAIL FOR VT RTE 118
ALUMINUM APPROACH RAIL POST DETAILS

\triangle	REVISED DIMENSIONS PER APPROVERS MARKUPS	CMS	03 23 10
REV.	DESCRIPTION	BY	DATE

MADE <u>CMS</u> DATE <u>02/18/10</u> JOB No. <u>AR0624</u> CUST. No. _____
CHECK <u>BLJ</u> DATE <u>02/25/10</u> DRAWING <u>LB10</u> REV. No. <u>ONE</u>