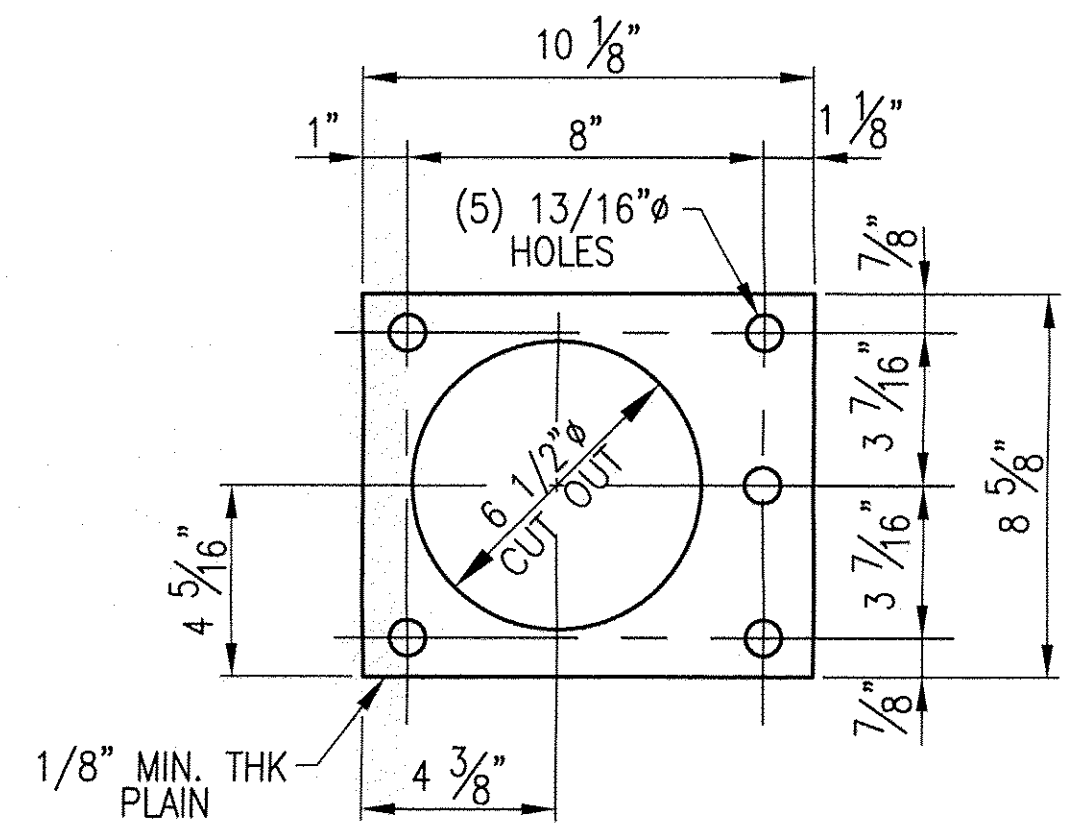
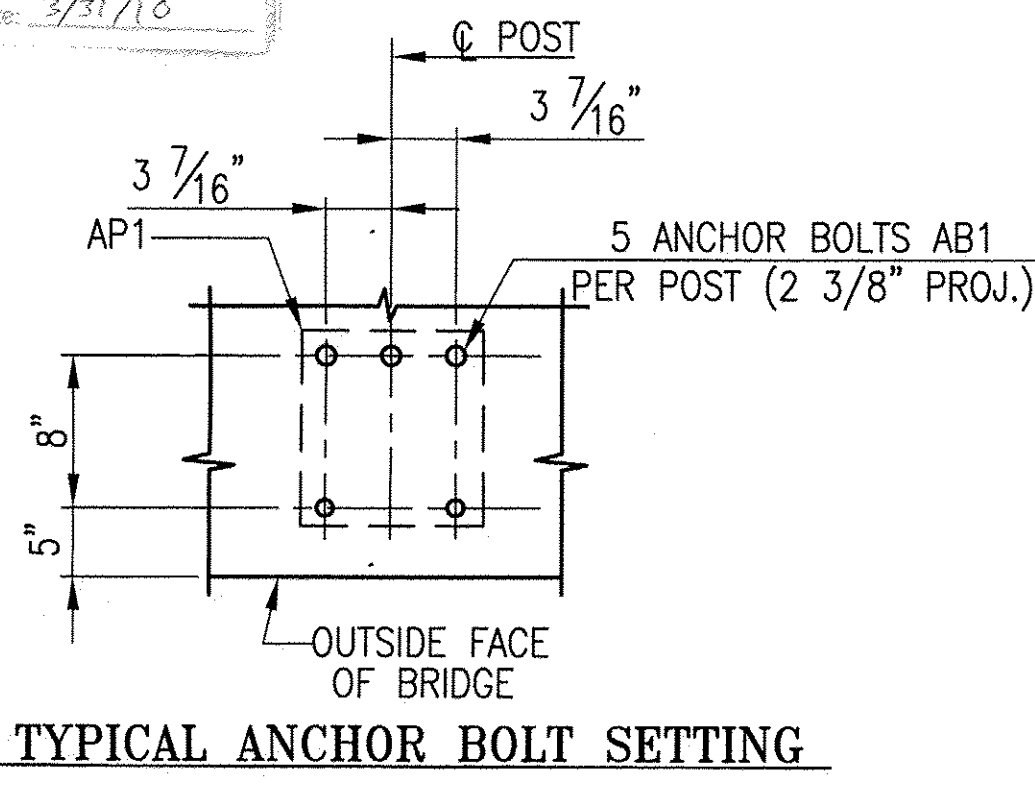
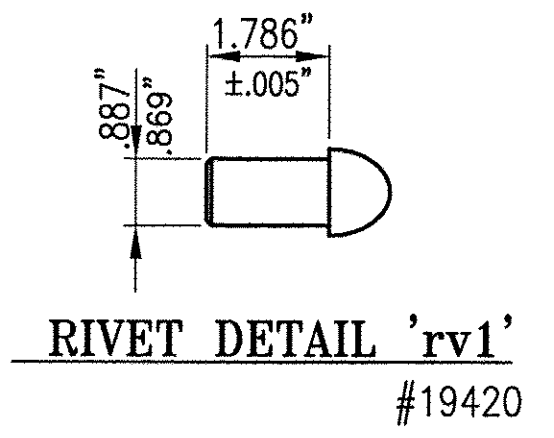
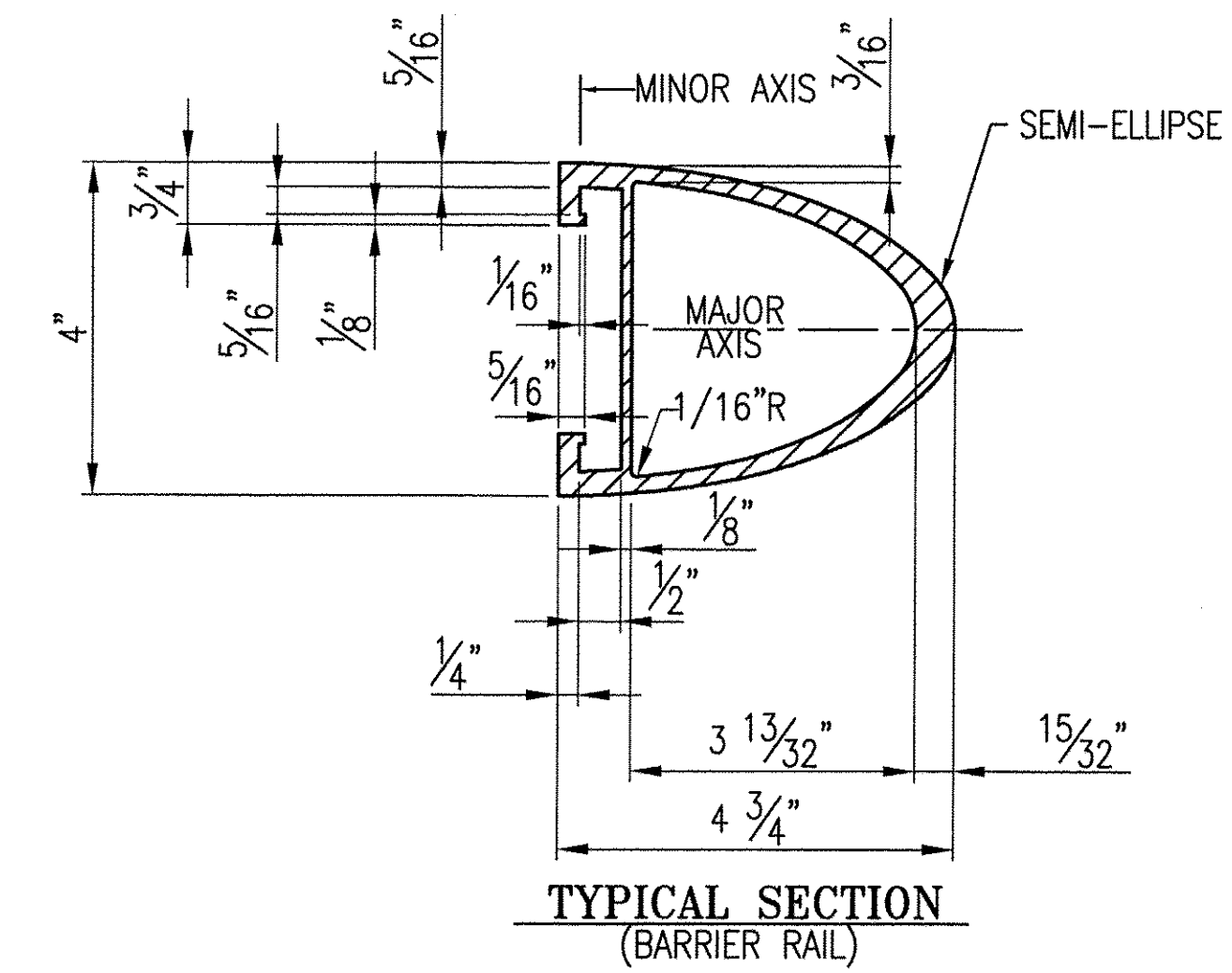
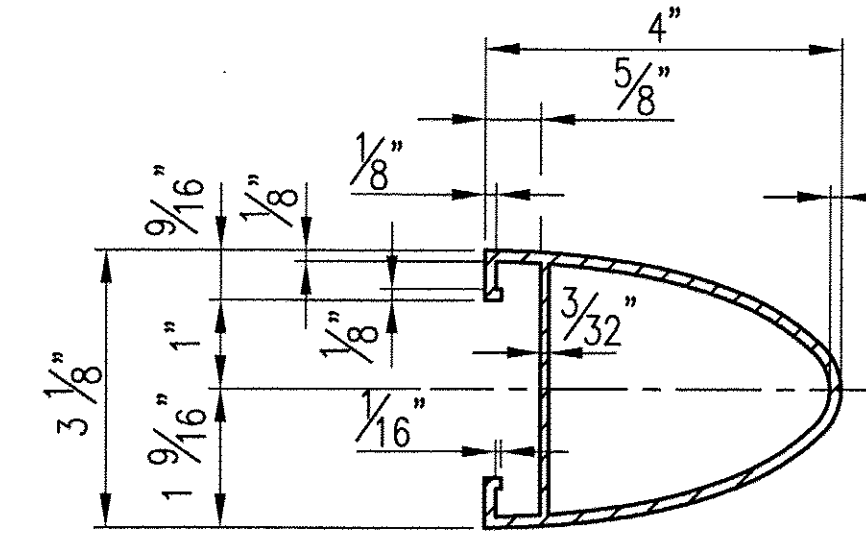


T-Y-LIN INTERNATIONAL
 No Exceptions Taken
 Make Correction as Noted
 Submittal Specified Here
 Revise and Resubmit as Noted
 Rejected

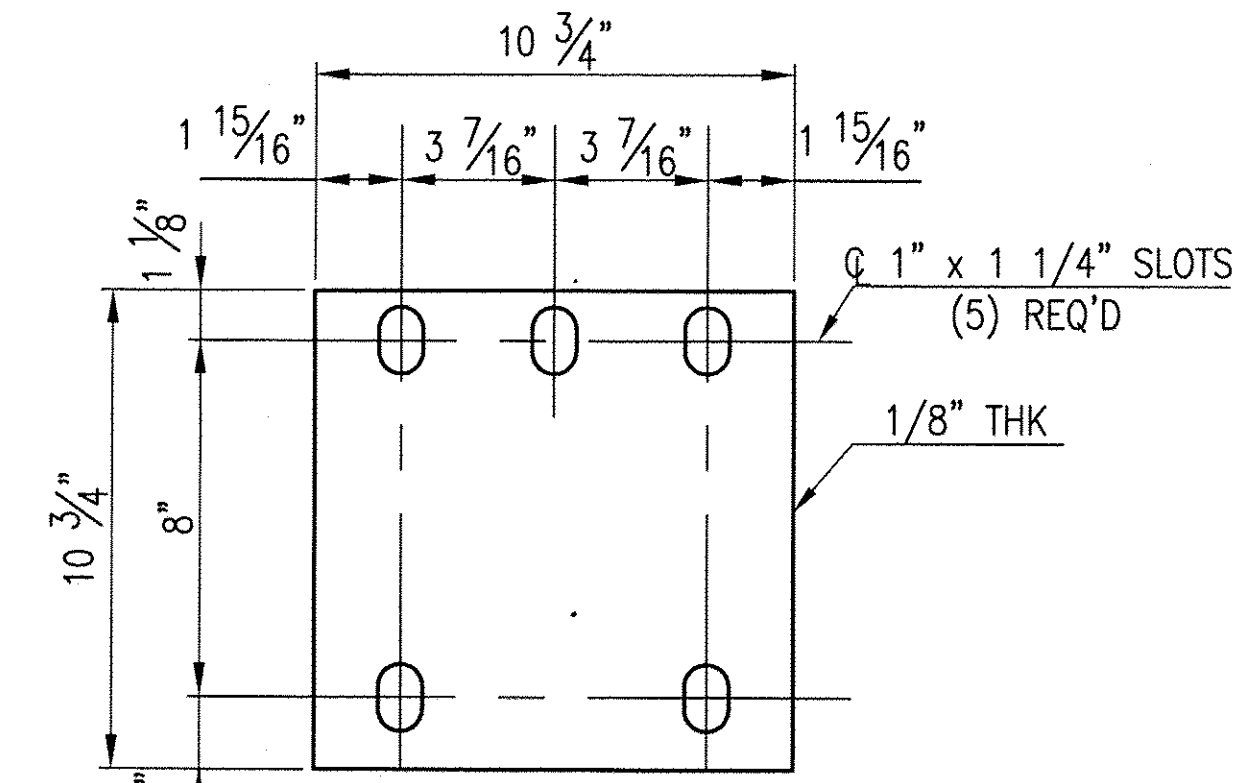
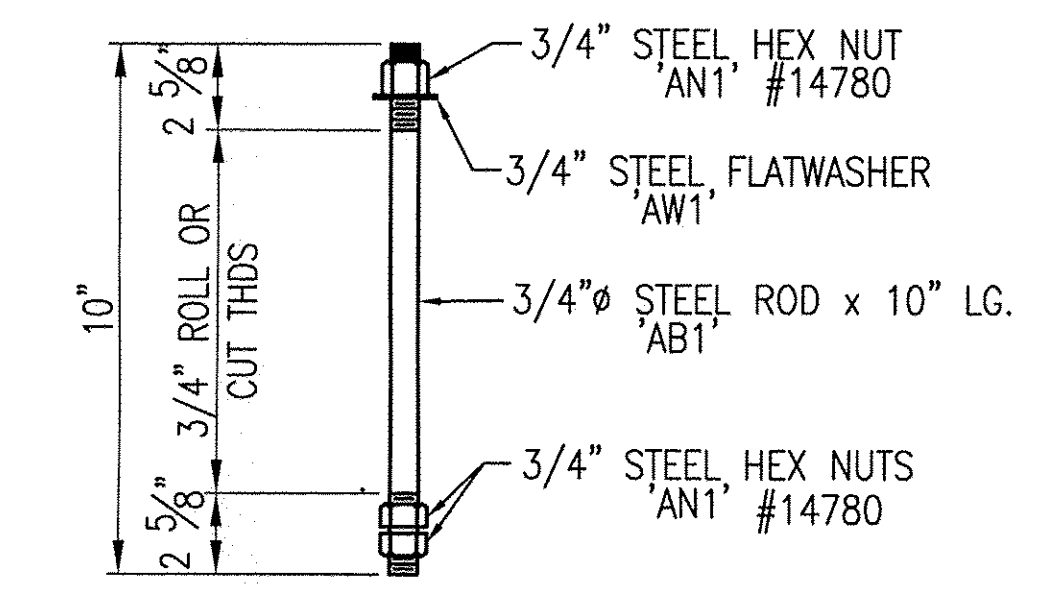
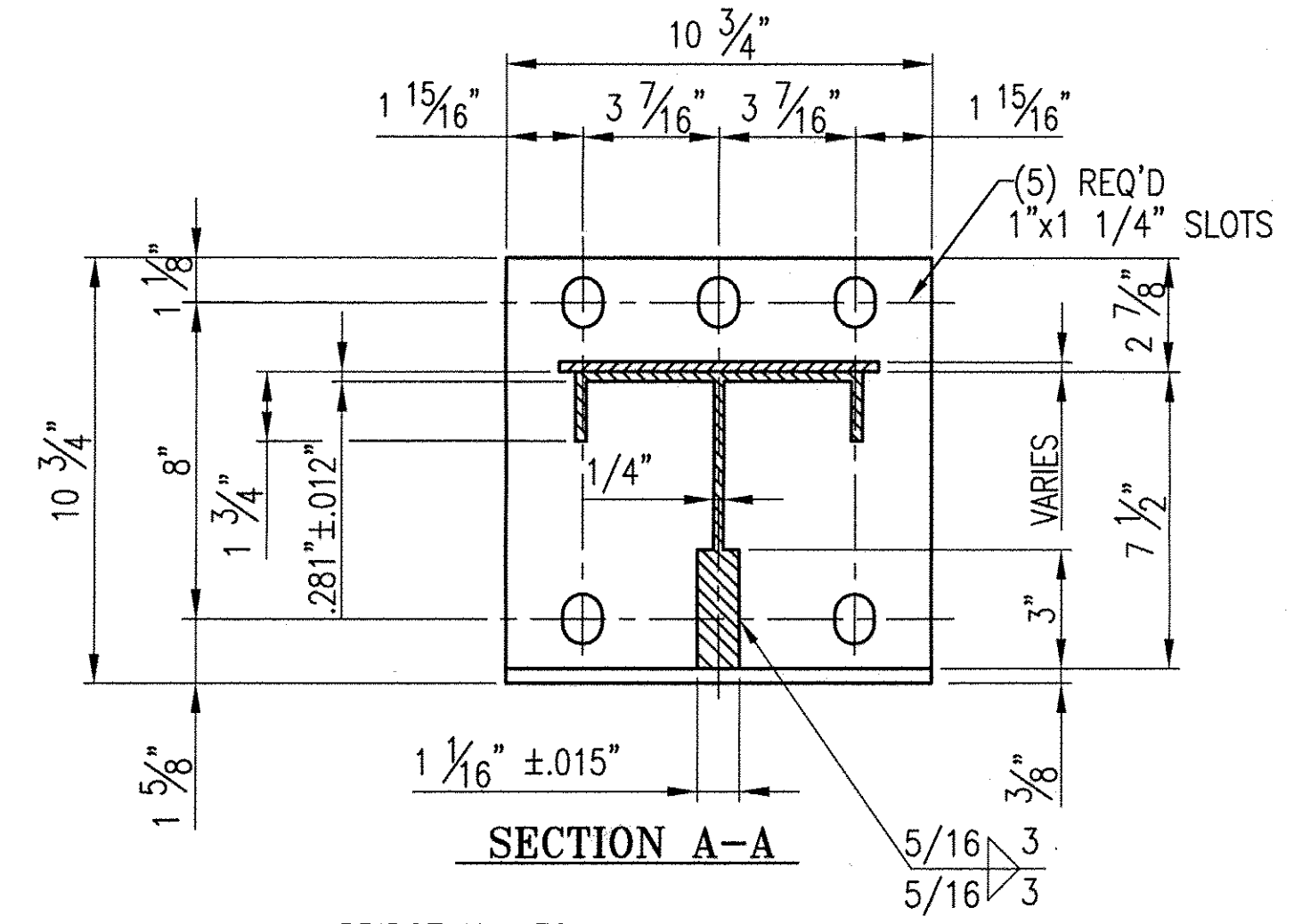
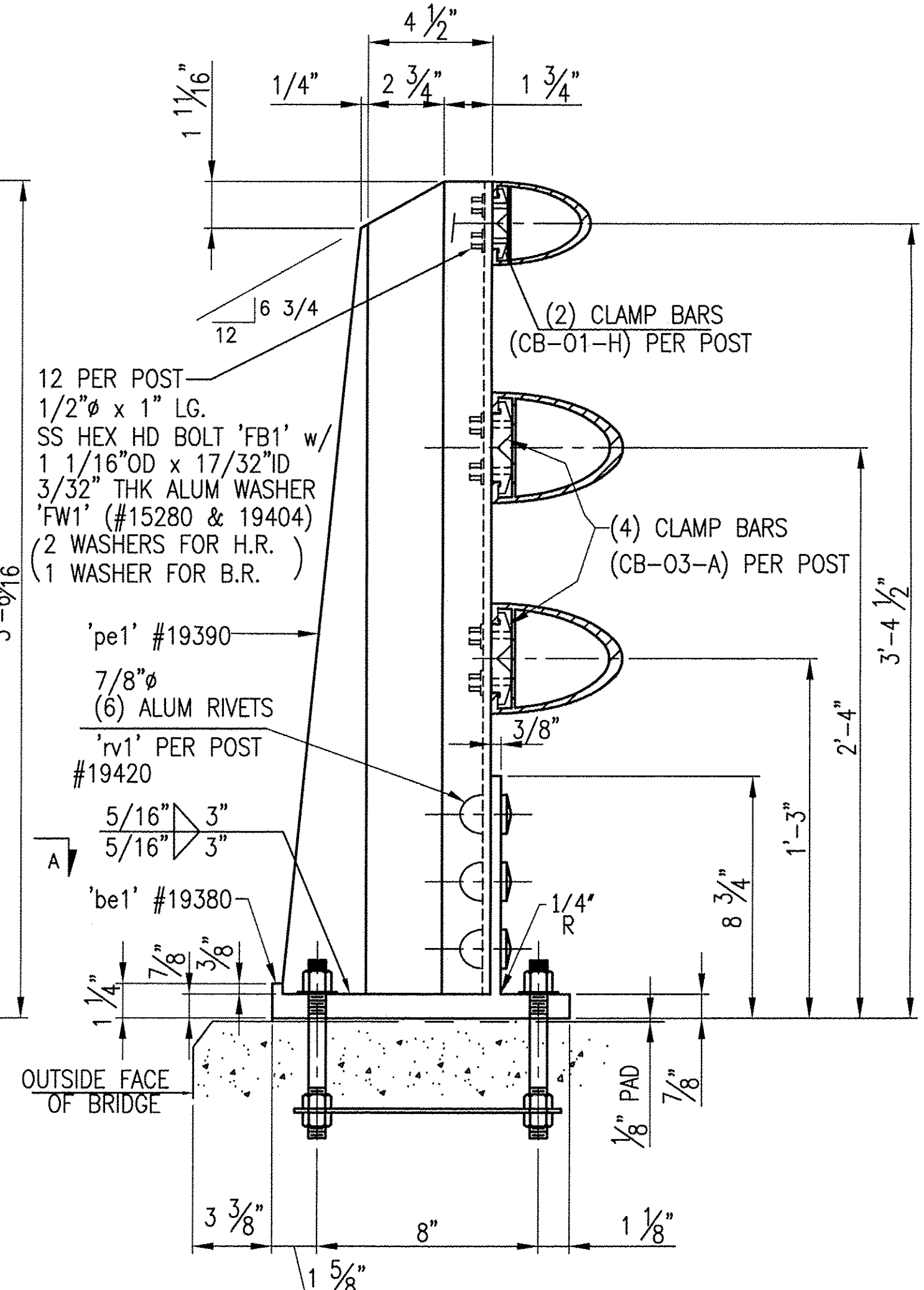
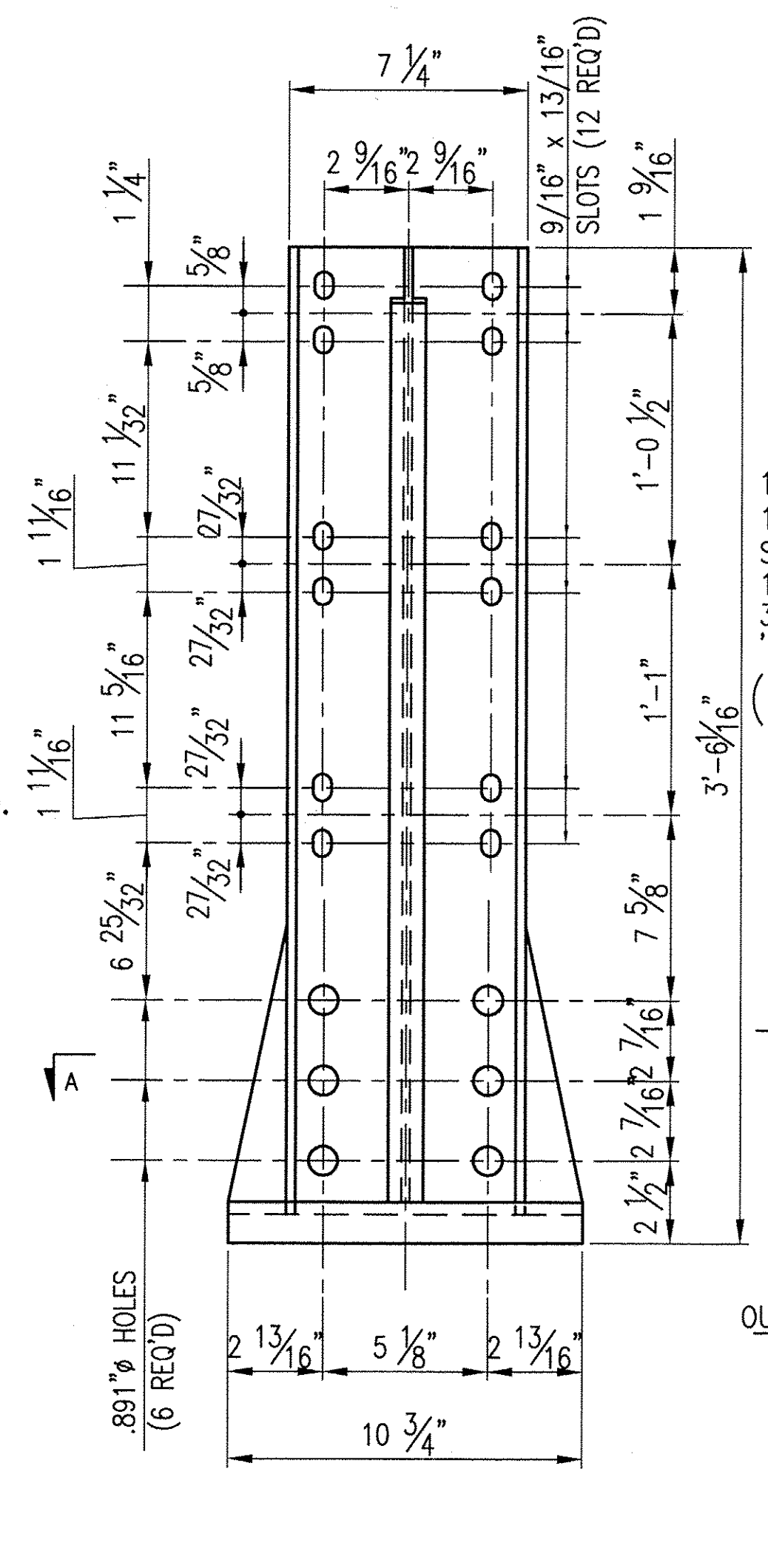
Checking for general compliance with the design concept of the project and general compliance with the information given in the contract documents only. Any action shown is not an approval and is subject to the requirements of the plans and specifications. Any action shown on a specific item shall not indicate the checking of dimensions which shall be confirmed and corrected at the job site, fabrication processes, techniques of construction, safety precautions and coordination of its work with that of all other trades and the satisfactory performance of its work.

Reviewed By: *Shanta Keller* Date: 3/21/10



ANODIZED

- ALL ALUM. COMPONENTS SHALL BE ANODIZED TO A BLACK (HARD SATIN FINISH) COLOR - AA-M10-C22-A44/A42 CLASS 1
- MIN. THICKNESS OF 0.7 MILS. AND A MIN. WEIGHT OF 35 MG/SQ IN.
- ALL VISIBLE HARDWARE SHALL BE FIELD PAINTED TO MATCH THE ANODIZED RAIL. TOUCH UP PAINT SHALL BE PROVIDED.
- SAMPLES SHALL BE SUBMITTED FOR THE ENGINEER'S APPROVAL.
- STEEL FASTENERS TO BE TOUCHED UP IN FIELD AS REQ'D.
- TOUCH UP PAINT TO BE FURNISHED FOR FIELD USE.



40 ~ REQ'D FABRICATED RAIL POSTS PP1 (SIDEWALK)

GENERAL NOTES

ALL MATERIAL AND WORKMANSHIP SHALL BE IN ACCORDANCE WITH VERMONT AGENCY OF TRANSPORTATION STANDARD SPECIFICATIONS FOR CONSTRUCTION DATED 2006 AND ITS LATEST REVISIONS.

DESCRIPTION	ASTM	ALLOY/GR.	REMARKS
RAILS, POSTS, BASES, SPLICES, CLAMP BARS, PINS, & BALUSTER FRAMES	B221	6061-T6 OR 6351-T5	MIN. YIELD STRENGTH Fy = 35,000 psi.
BALUSTERS	B221	6061 OR 6351	T4 - USED FOR SUPERIOR EXPANDING QUALITIES
RIVETS	B316	6061-T6	BUTTON HD., CONE PT.
SET SCREWS FOR BALUSTERS	F880	TYPE 303	
STAINLESS STEEL BOLTS	A193	GRADE B8	
ANCHOR RODS	A449		GALV. A153
STEEL HEX. NUTS	A563	GRADE DH	GALV. A153
STEEL WASHERS	F436		GALV. A153
ANCHOR PLATES	A569		COMMERCIAL QUALITY (PLAIN)
ALUMINUM WASHERS	B209	6061-T6	
PREFORMED PADS			SECTION 731.01 OR 731.02
ELECTRODES FOR WELDING		AWS A5.10 ER5356	

POSTS TO BE NORMAL TO GRADE AND RAILS SHALL BE PARALLEL TO GRADE. RAILS TO BE ATTACHED TO A MINIMUM OF THREE POSTS WHEN POSSIBLE.

ALL RAILS AND WELDS TO BE FREE FROM ALL BURRS AND ROUGH EDGES. ENDS OF TUBE SECTIONS SHALL BE SAWED OR MILLED. GRIND ALL CUT EDGES SMOOTH.

ALL THREADS TO BE UNC CLASS 2A/2B.

ALL EXTRUSION TOLERANCES NOT SHOWN SHALL BE IN ACCORDANCE WITH ASTM B221.

IF CUT THREADS ARE USED, BOLT DIAMETER SHALL NOT BE LESS THAN NOMINAL DIAMETER. IF ROLLED THREADS ARE USED, BOLT DIAMETER SHALL NOT BE LESS THAN THE ROOT DIAMETER OF THREADS.

THE SPLICE BAR SHALL BE ATTACHED TO THE RAIL ELEMENT AS FOLLOWS:
 THE RAIL SPLICE AT THE BRIDGE EXPANSION JOINT SHALL BE FASTENED ON BOTH SIDES OF THE RAIL SPLICE USING THE PARTIALLY THREADED BOLTS, WITH THE WASHER FACED BOLT, TIGHTENED SECURELY TO THE END OF THREADS, AND LEAVING A 1/8" GAP. THIS ALLOWS EXPANSION ON BOTH SIDES OF THE JOINT.

ALL NUTS SHALL COMPLY WITH AMERICAN HEXAGON ANSI SPECIFICATIONS B18.2

BRIDGE No. 30
 PROJECT No. BHF 0283 (9) S
 ITEM No: 525.235

APPROVED: _____
 REC'D APPROVAL _____
 DRAWING _____

L.B. FOSTER COMPANY
 1016 GREENTREE ROAD
 PITTSBURGH, PENNSYLVANIA 15220

FOR: A.D. ROSSI CORPORATION
 VERMONT AGENCY OF TRANSPORTATION
 TOWN OF BERKSHIRE, COUNTY OF FRANKLIN
 3-LINE SEMI-ELLIP. ALUM. BRIDGE RAIL FOR VT RTE 118
 GENERAL NOTES AND TYP DETAILS ~ SIDEWALK SIDE

MADE CMS DATE 02/10/10 JOB No. AR0624 CUST. No.
 CHECK BLJ DATE 02/25/10 DRAWING LB1 REV. No.

REV.	DESCRIPTION	BY	DATE