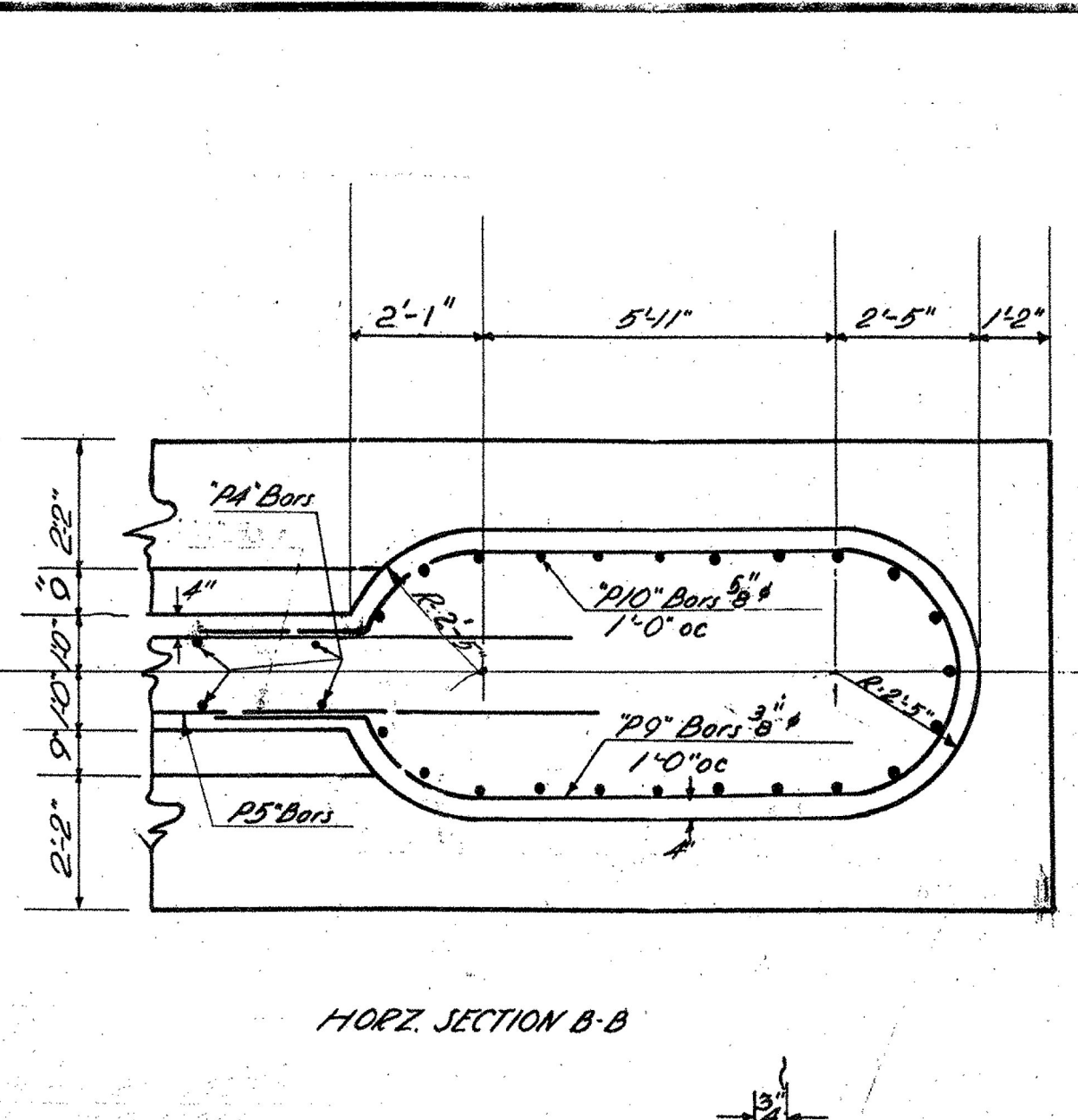
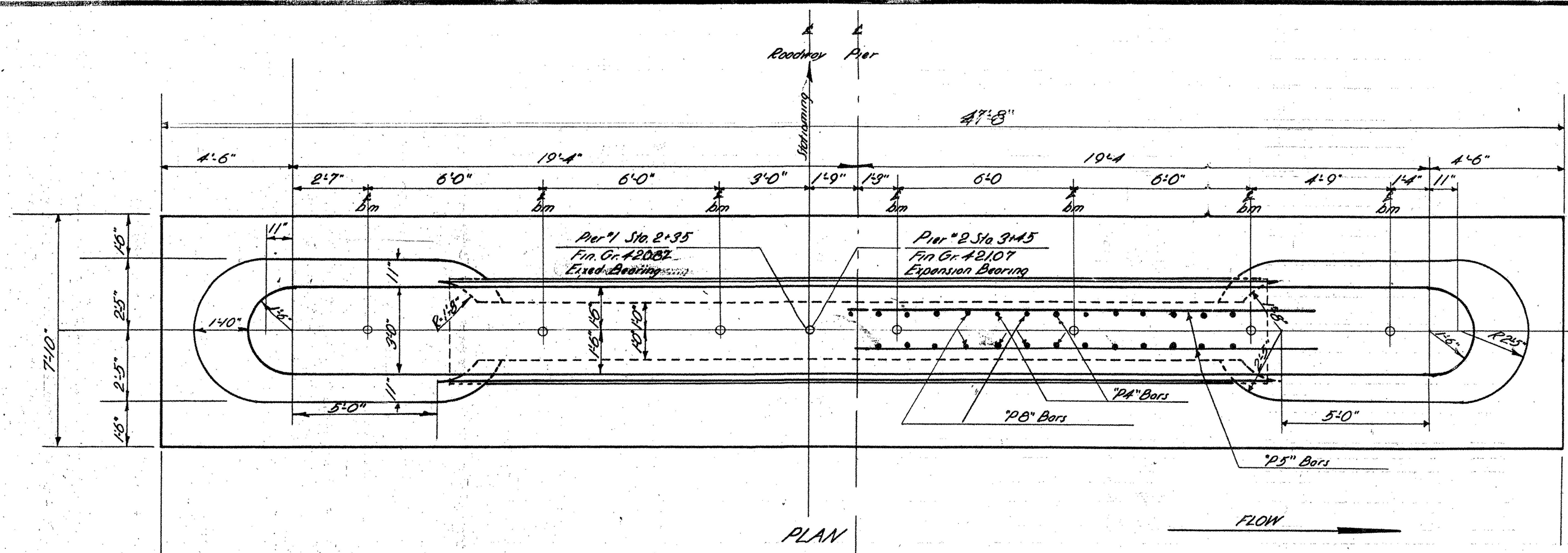
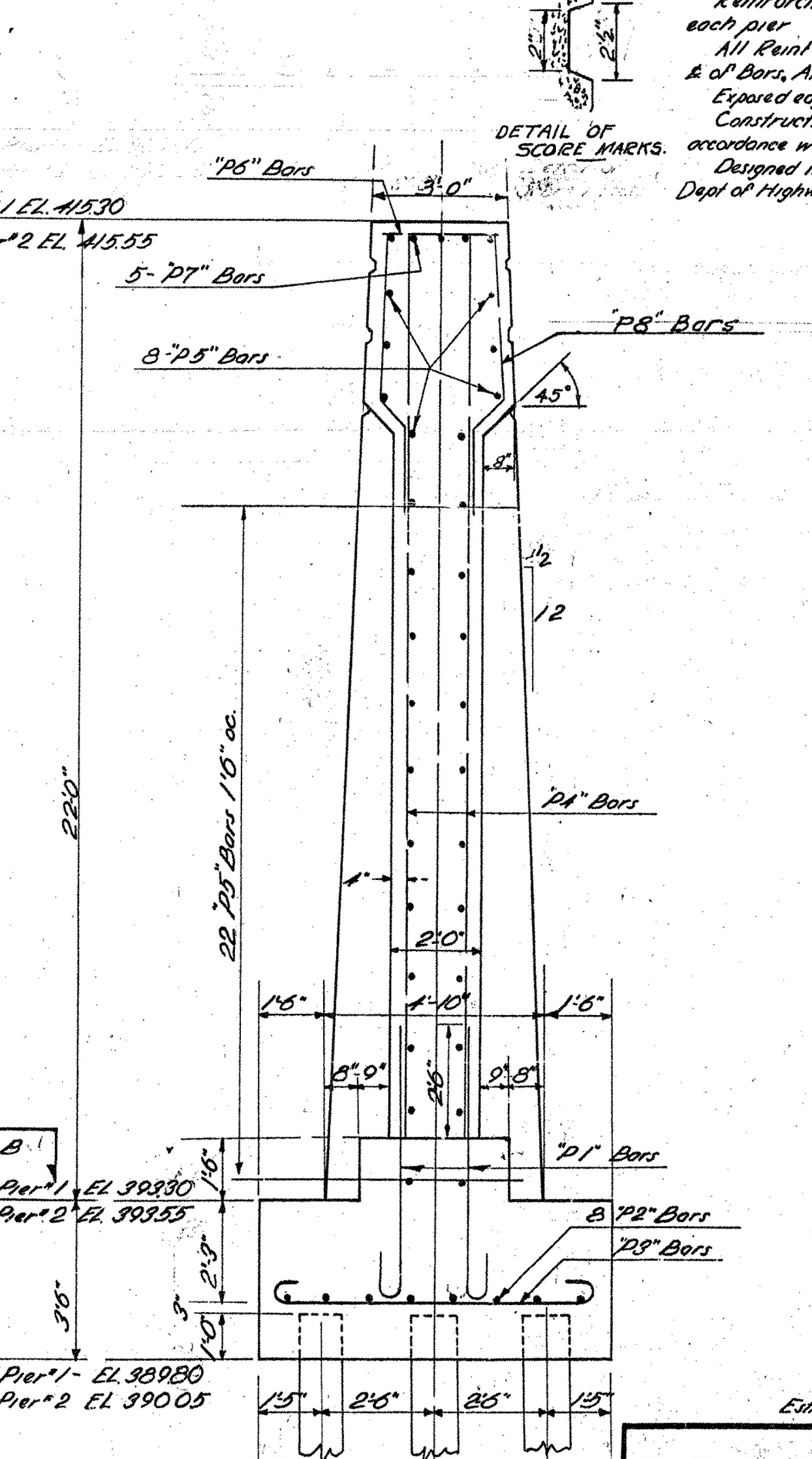
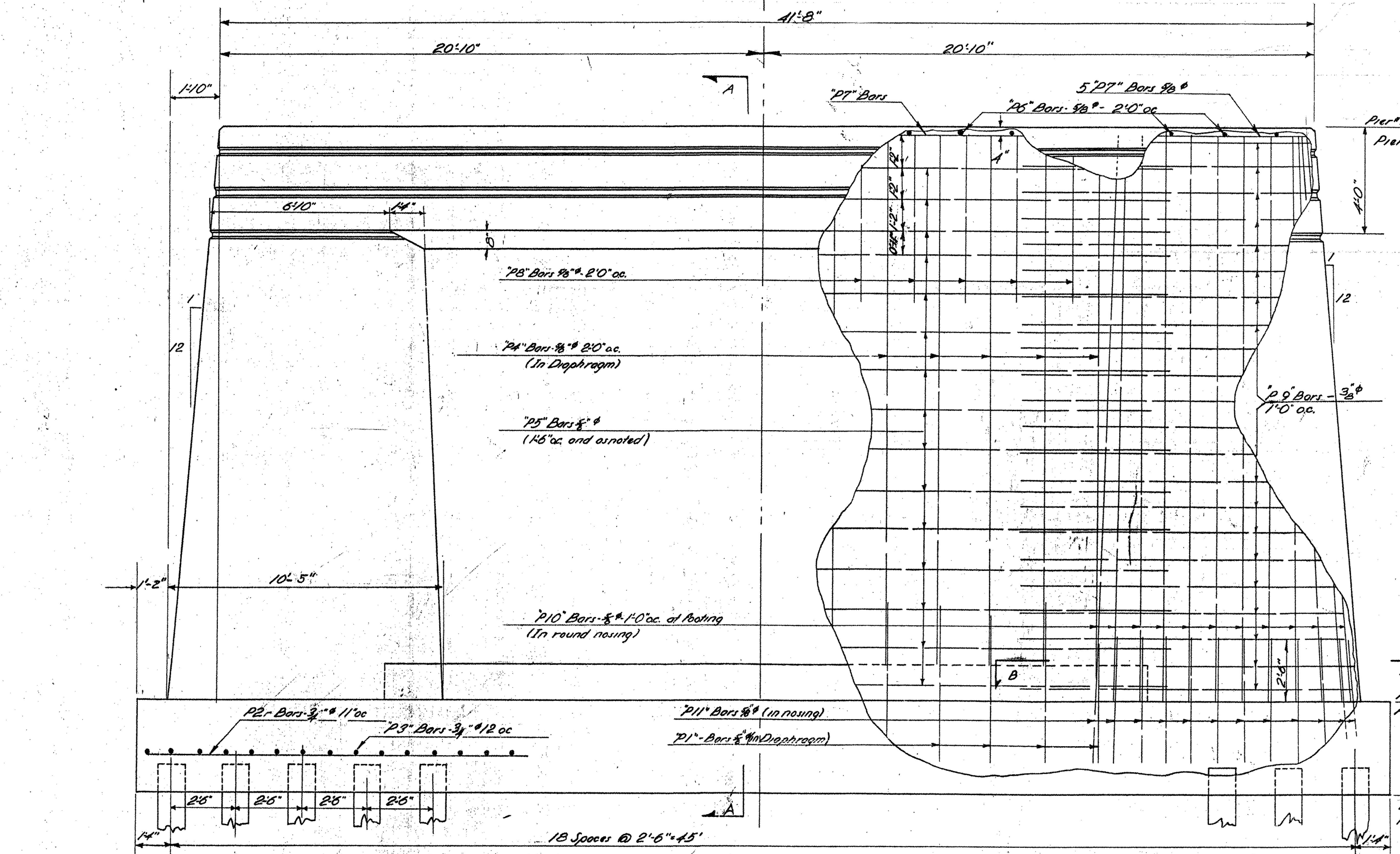


FED. ROAD DIST. NO.	STATE	PROJ. NO.	FISCAL YEAR	SHEET NO.	TOTAL SHEETS
	VT.				

Bar	Size	Req	Length	Detail
P1	5/8"	28	7'-2"	
P2	3/4"	16	25'-0"	Straight
P3	3/4"	18	8'-11"	
P4	5/8"	28	20'-2"	Straight
P5	5/8"	30	31'-0"	Straight
P6	5/8"	20	2'-6"	Straight
P7	5/8"	10	20'-6"	Straight
P8	5/8"	26	6'-7"	
P9	3/8"	44	29'-0"	Straight, Bend in Field
P10	5/8"	46	21'-8"	Straight
P11	5/8"	46	5'-8"	



Reinforcing Steel Schedule above for one pier only. Identical Schedule for each pier.
 All Reinforcing Steel to be Intermediate Grade. All Reinforcing Steel dimensions to be as of Bars, All Concrete to be Class "C".
 Exposed edges to be chamfered 3/4".
 Construction joints if necessary, and if authorized by the Engineer, to be in accordance with detail "D" on drawing SB-20.
 Designed in accordance with AASHTO, Specification of 1949 and State of Vermont Dept. of Highways, Std. Specification for Road & Bridge. Construction of 1948.



BERKSHIRE BHF 0283(9)S
 VT 118 BRIDGE 30
 SHEET 39 OF 41
 FOR REFERENCE ONLY
 REFERENCE SHEET 2 OF 4

DETAIL OF PIERS NO. 1 & NO. 2
 BERKSHIRE
 SCALE 3/8" = 1'-0"

Estimated Quantities		Per #1		Per #2	
Reinforcing Steel	Lbs.	5250	3230		
Untreated timber piling	L.F.	1425	1425		
Concrete, C.C.	CY	160	1160		
Struct. Excav.	CY	108	180		
Cut-offs - Untreated Timber Piling Item 502-A	L.F.	171	171		

Surveyed by
 Designed by S.N.
 Drawn by S.N.
 Traced by R.B.
 Checked by W.M.S.
 Series J No. 393
 Sheet 15 of 36

For estimating purposes, Pier #1 Piles to be 25' long, Pier #2 Piles to be 25' long.
 Piles to be Untreated Timber Piling with 12" Min. diameter - Built to be driven to 20 Tons Bearing Capacity.
 Piles shall be shod with steel shoes as shown on std. Dwg. SB-2 Det. SB-206.
 Cost of steel shoes, as required shall be included in bid price for untreated timber piling item 502-A.
 Cut off Allowance for Untreated Timber Piles - 3 (57'-57") - 342 Lins. Ft. for two Piers