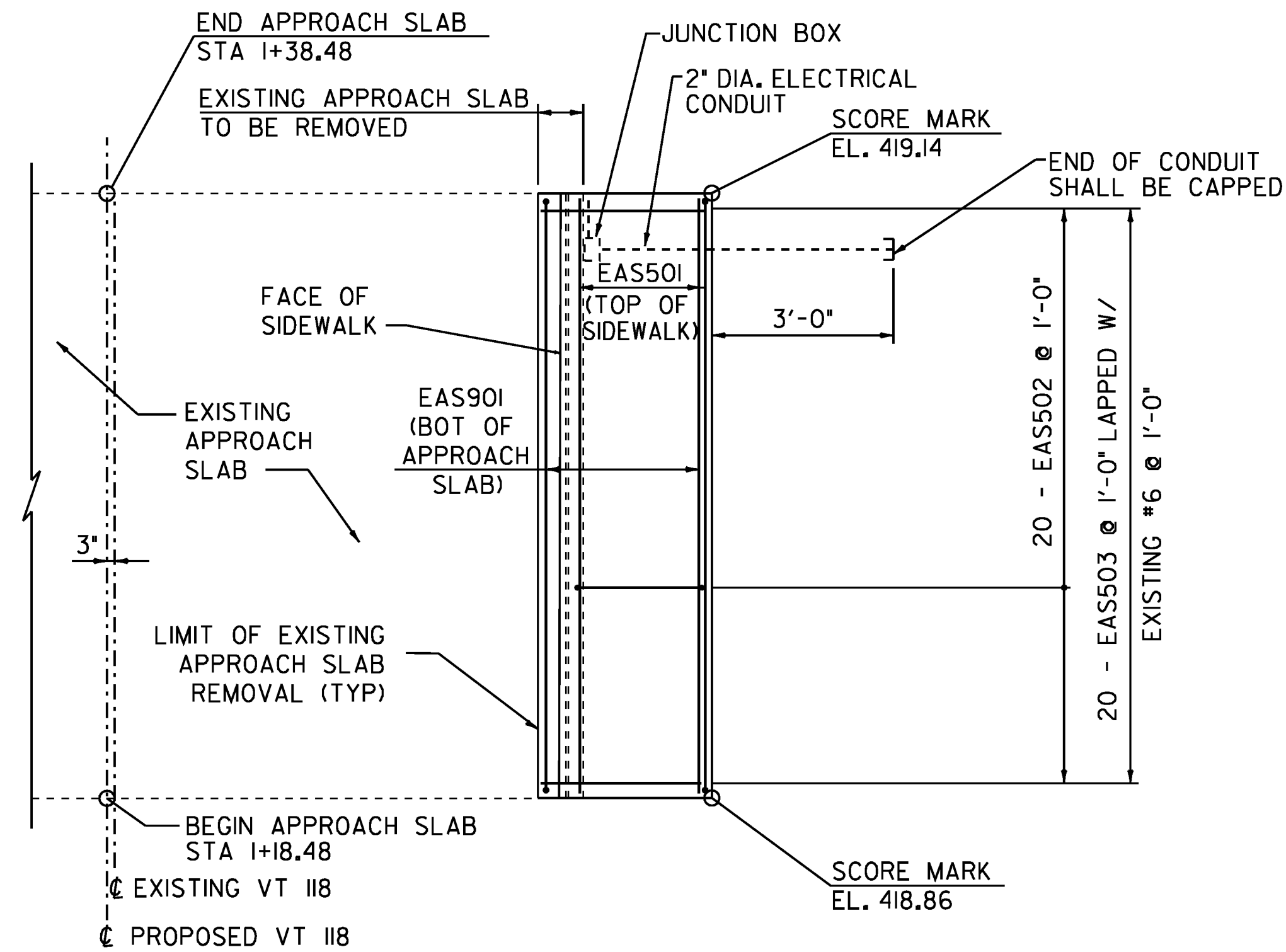


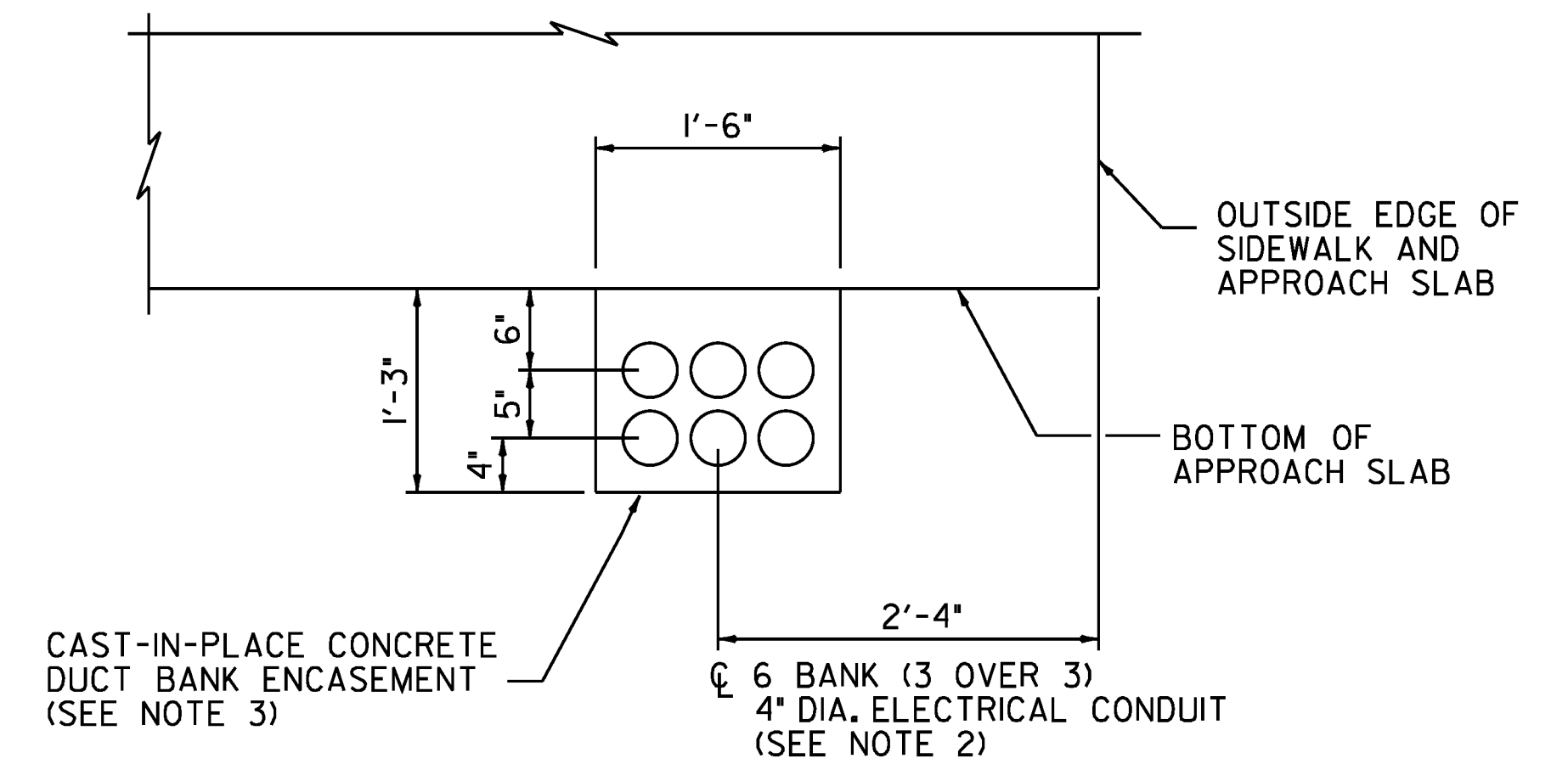
SOUTH APPROACH SLAB PLAN

SCALE: 1/4" = 1'-0"



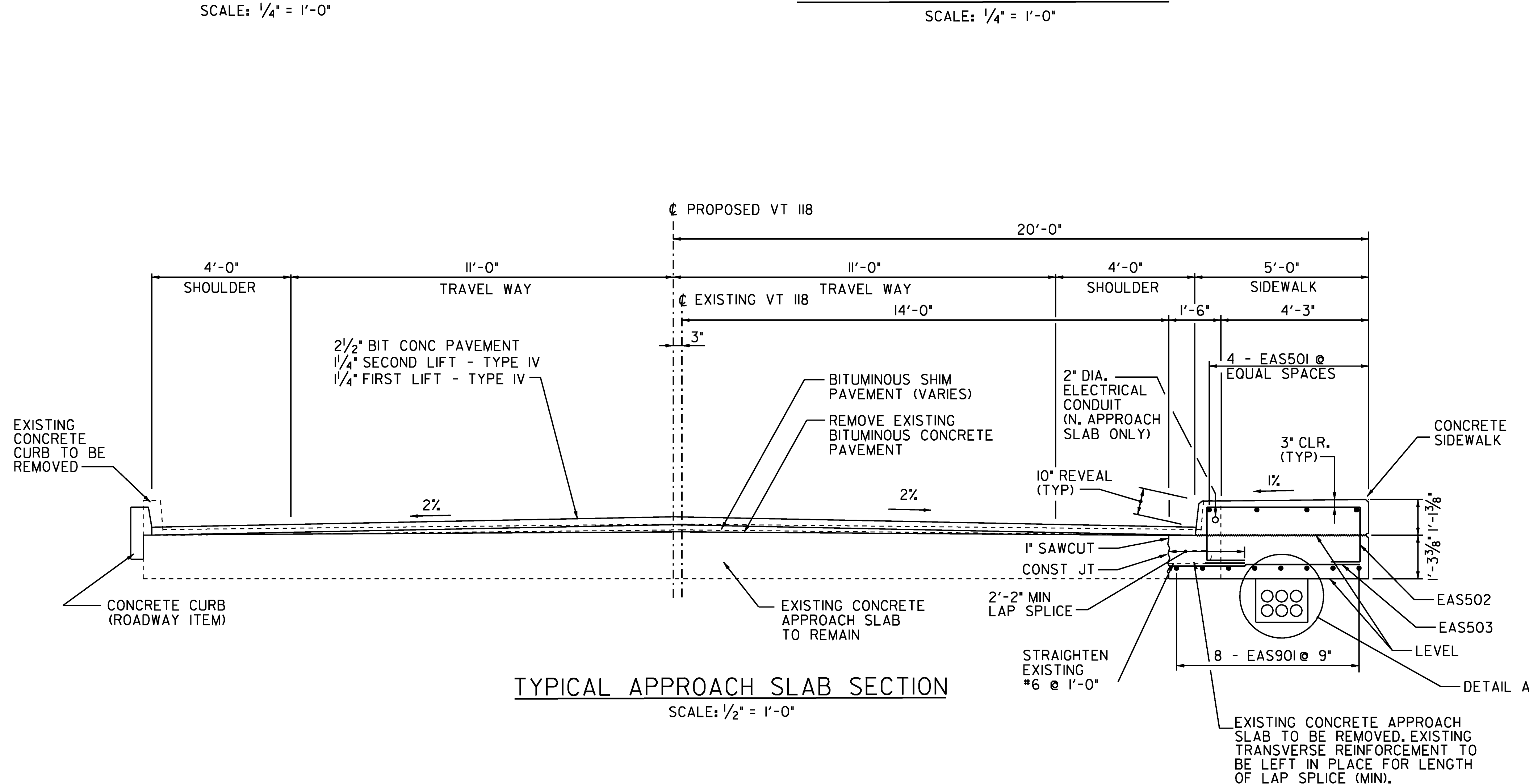
NORTH APPROACH SLAB PLAN

SCALE: 1/4" = 1'-0"



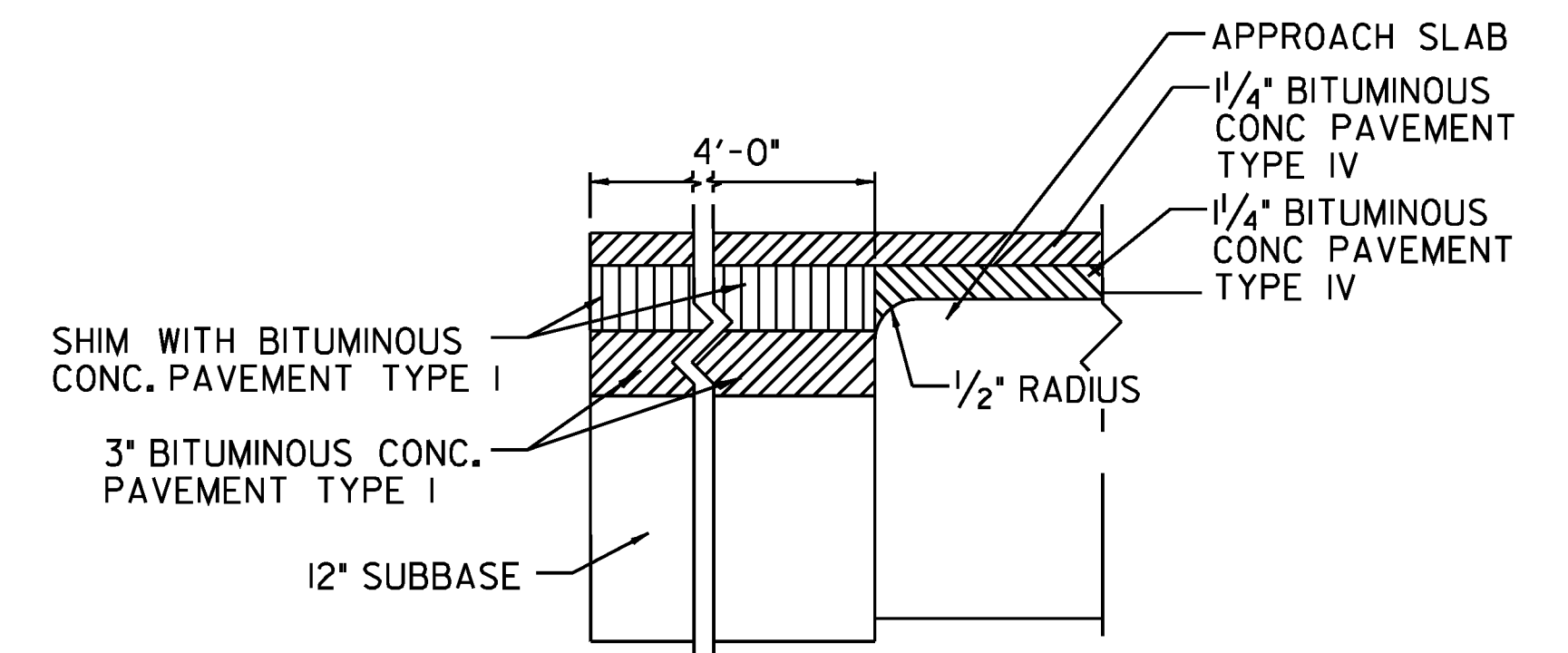
DETAIL A-A

SCALE: 1" = 1'-0"



TYPICAL APPROACH SLAB SECTION

SCALE: 1/2" = 1'-0"



DETAIL AT APPROACH SLAB END

NOT TO SCALE

NOTES:

1. FOR CURB AND SIDEWALK DIMENSIONS NOT SHOWN, SEE TYPICAL SECTION, SHT 13.
2. 6 BANK (3 OVER 3) 4" DIA. ELECTRICAL CONDUIT SHALL BE PAID UNDER ITEM 900.640 SPECIAL PROVISION (DUCT BANK)(6 CONDUIT).
3. CONCRETE FOR CONCRETE DUCT BANK ENCASMENT SHALL BE CONCRETE, CLASS B f'c = 3500 psi AND SHALL BE INCIDENTAL TO ITEM 900.640 SPECIAL PROVISION (DUCT BANK)(6 CONDUIT).

**STATE OF VERMONT
AGENCY OF TRANSPORTATION**

Town Of	BERKSHIRE	Bridge No.	30
Highway No.	VT I18	Log Sta.	
		Surv. Sta.	
VT I18 OVER MISSISSQUOI RIVER			
APPROACH SLAB DETAILS			
Designed By	J Howe	Drawn By	J Davis
Checked By	R Hebert	Date	4/2/09
		Bridge Design Supervisor	
PROJECT	BERKSHIRE	PROJECT NO.	BHF 0283(9)S
I.G.C. Info.			ZC304ASP.DGN
Bridge Sheet No.		Sheet	25 of 41