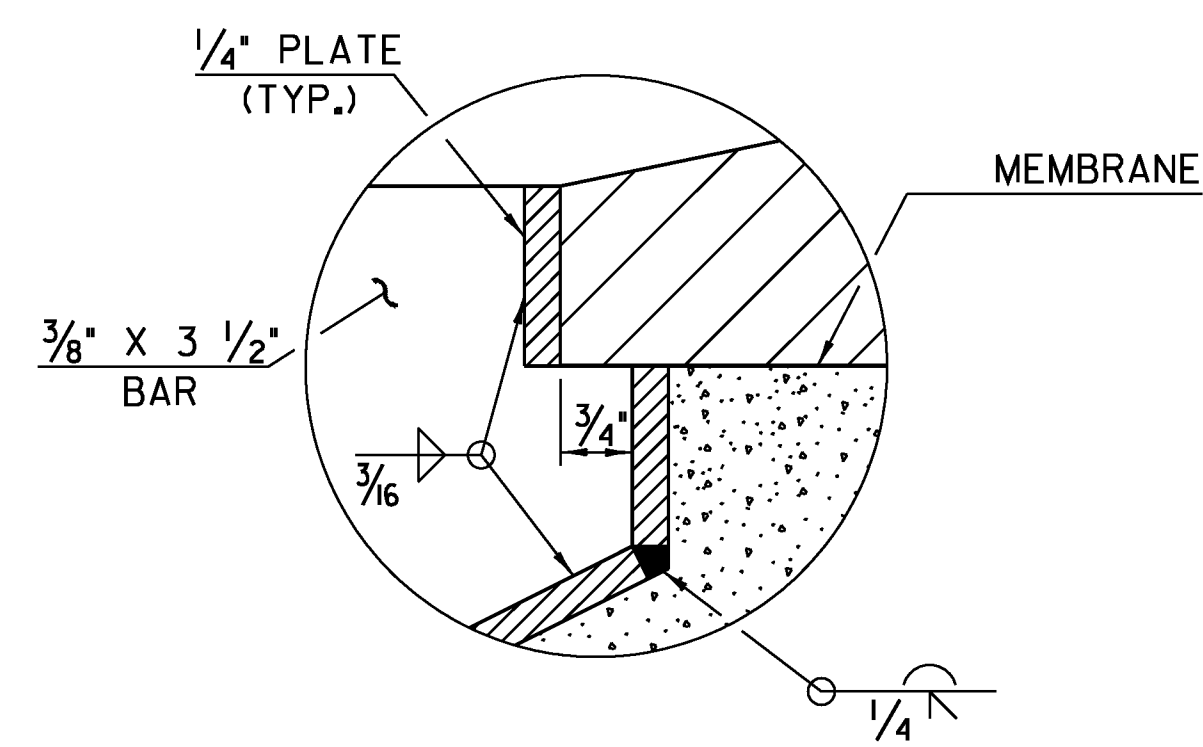


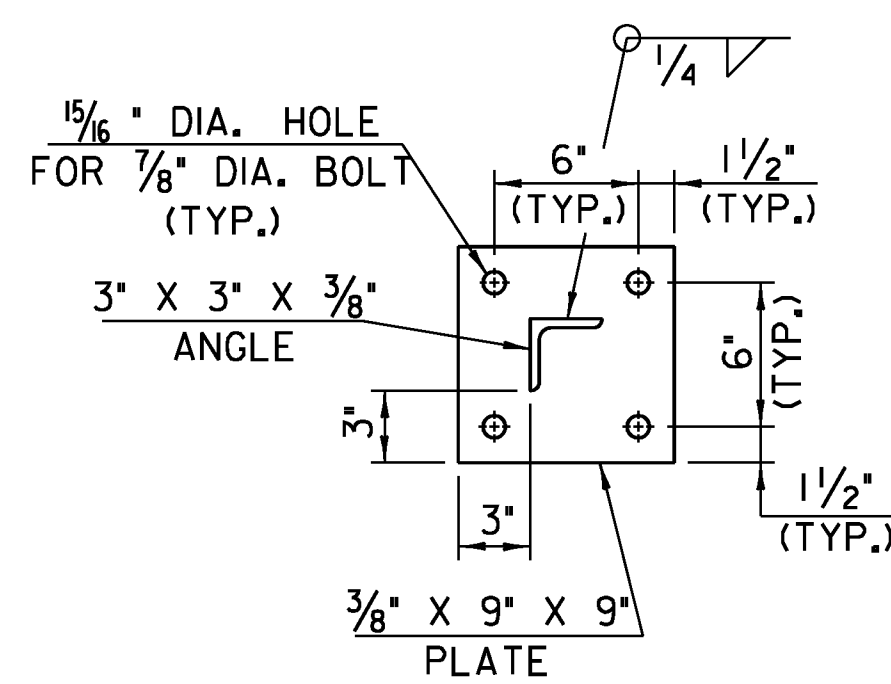
SECTION B - B

SCALE: 1/2" = 1'-0"



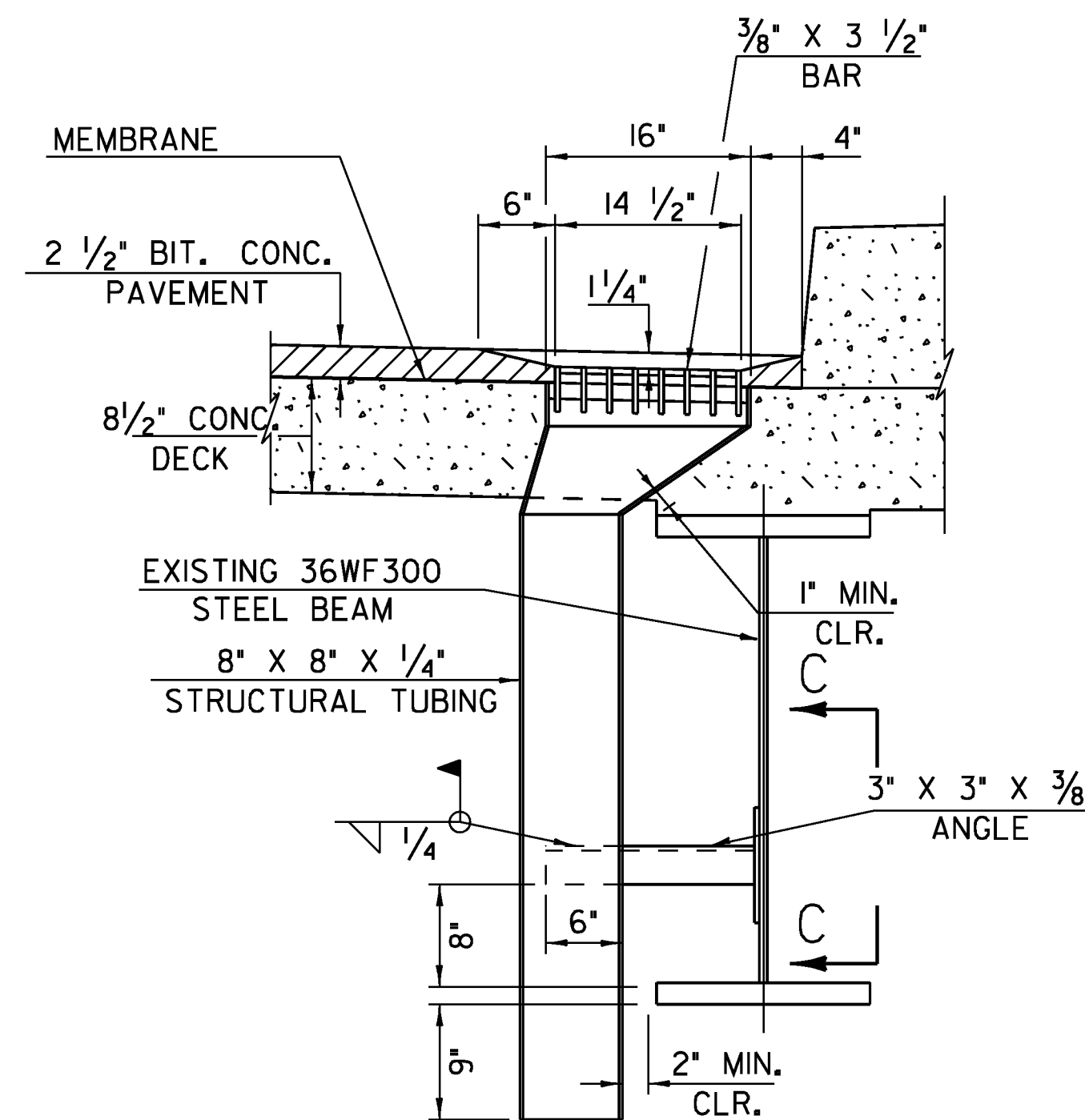
DETAIL "C"

NTS



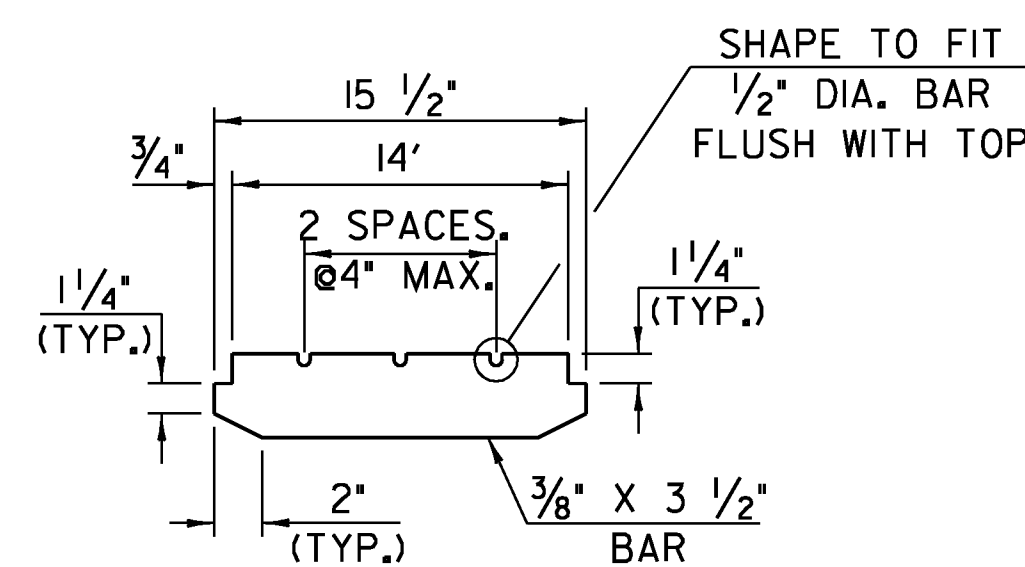
SECTION C - C

SCALE: 1/2" = 1'-0"



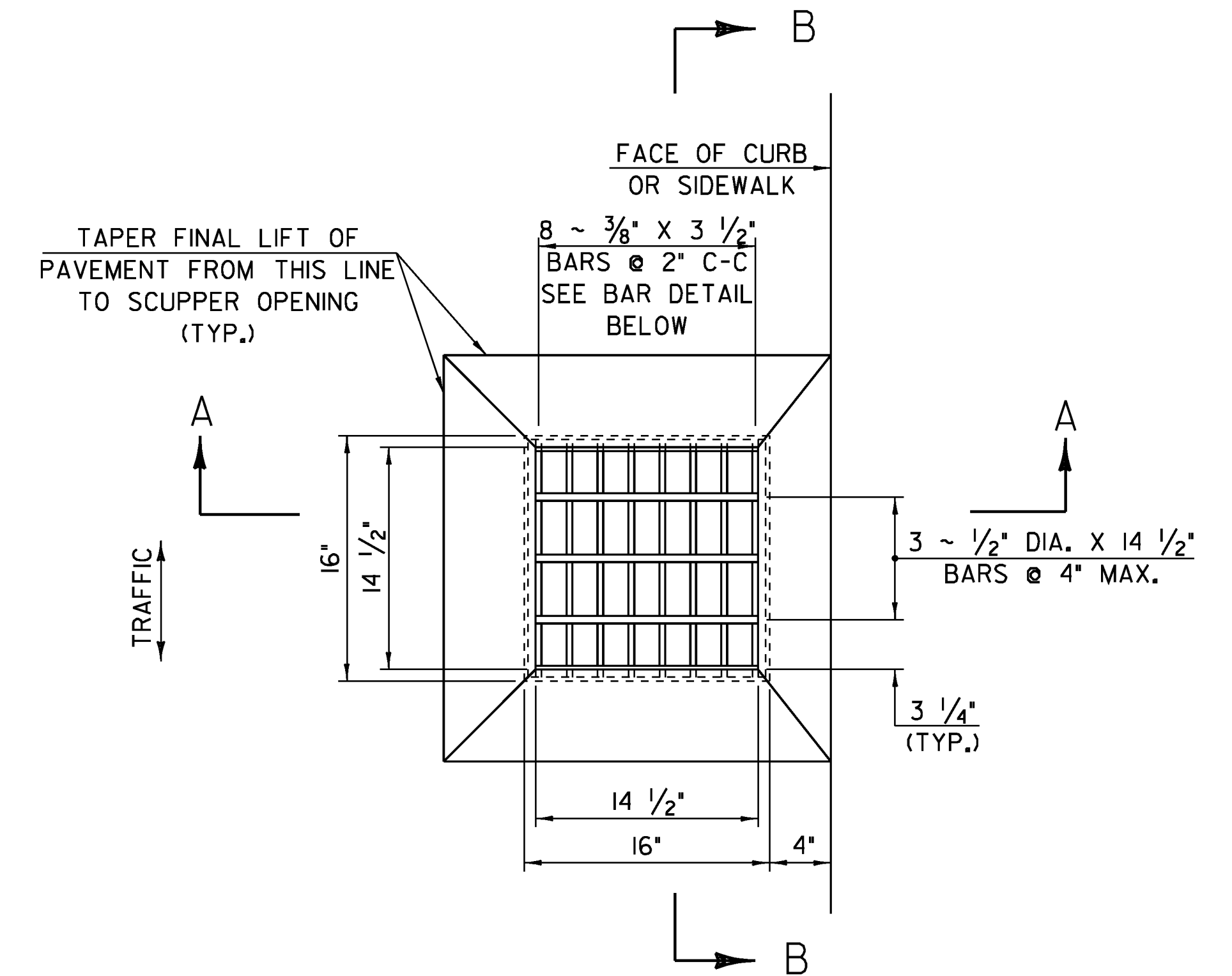
SECTION A - A

SCALE: 1" = 1'-0"



BAR DETAIL FOR GRATE

SCALE: 1/2" = 1'-0"



PLAN

SCALE: 1/2" = 1'-0"

NOTES

- THE FOLLOWING NOTES APPLY TO ALL SCUPPERS UNLESS OTHERWISE DETAILED ON PROJECT PLANS.
1. HOLLOW STRUCTURAL STEEL TUBING SHALL CONFORM TO ASTM A-500 GR. B OR A-501.
  2. ALL PLATES, BARS, AND ANGLES SHALL CONFORM TO AASHTO M 270, GRADE 250 (GRADE 36).
  3. ALL SCUPPERS AND SUPPORTS SHALL BE GALVANIZED IN ACCORDANCE WITH AASHTO M III AFTER FABRICATION.
  4. THE TOP SURFACE OF SCUPPER SHALL BE SLOPED TO MATCH ROADWAY SLOPE AND GRADE.
  5. THE BAR AND GRATE SECTION MAY BE PREFABRICATED PROVIDING THE GEOMETRY AND SECTION PROPERTIES ARE EQUIVALENT TO THE DETAILS SHOWN.
  6. SCUPPERS SHALL BE PAID FOR UNDER ITEM 506.60 "STRUCTURAL STEEL".
  7. HI-STRENGTH BOLTS, NUTS, AND WASHERS SHALL CONFORM TO AASHTO M 164, TYPE I, GALVANIZED.

SCUPPER LOCATION

STA. 1+50 LT & RT  
 STA. 2+45 LT & RT  
 STA. 4+30 LT & RT  
 (SEE SHEET 6)

STATE OF VERMONT  
 AGENCY OF TRANSPORTATION

Town Of	BERKSHIRE	Bridge No.	30
Highway No.	VT 118	Log Sta.	
		Surv. Sta.	
VT 118 OVER MISSISSQUOI RIVER			
SCUPPER DETAILS			
Designed By	J Howe	Drawn By	J Davis
Checked By	R Hebert	Date	4/2/09
		Bridge Design Supervisor	
PROJECT	BERKSHIRE	PROJECT NO.	BHF 0283(9)S
I.G.C. Info.			ZC304SCU.DGN
Bridge Sheet No.		Sheet	20 of 41