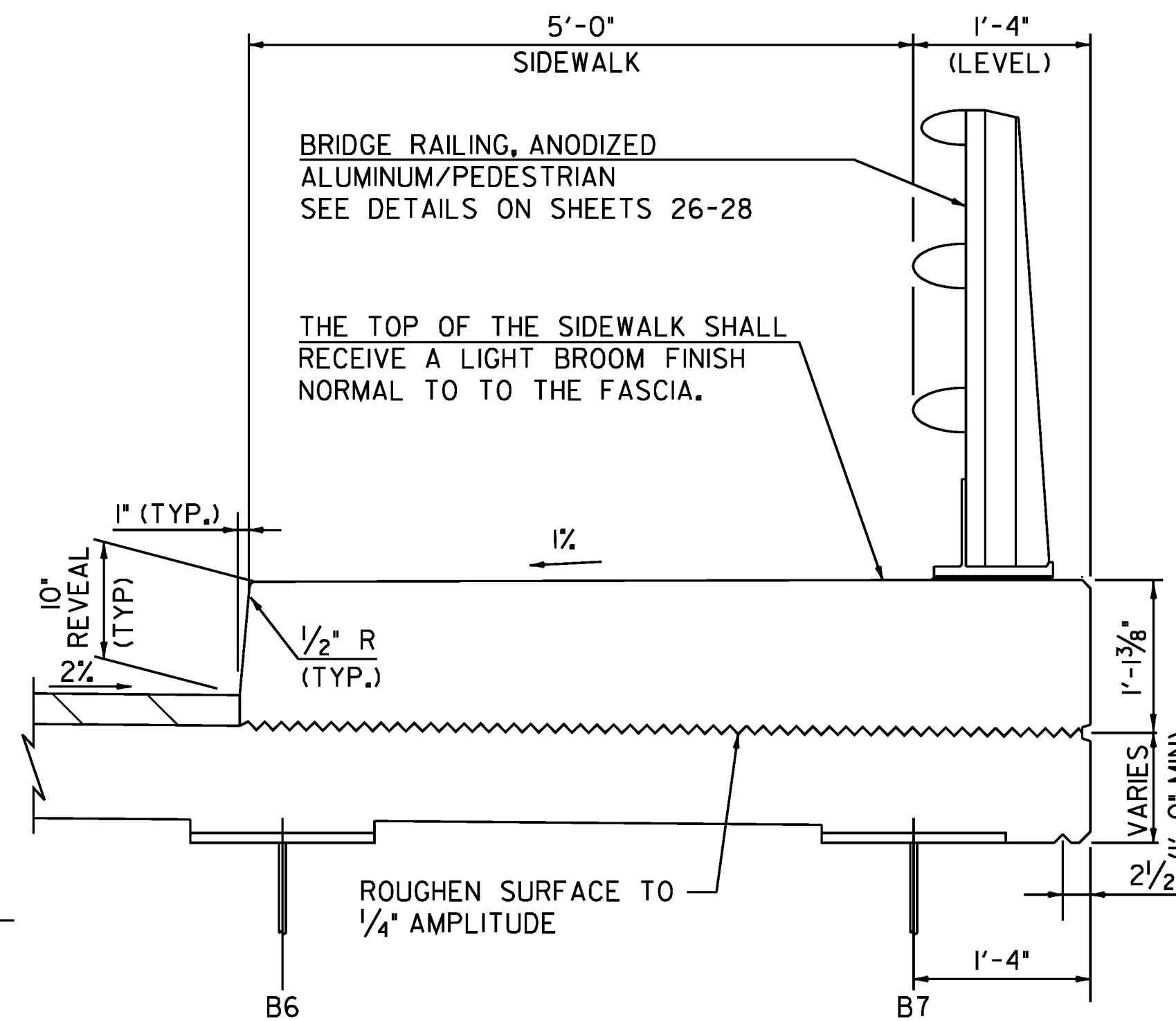


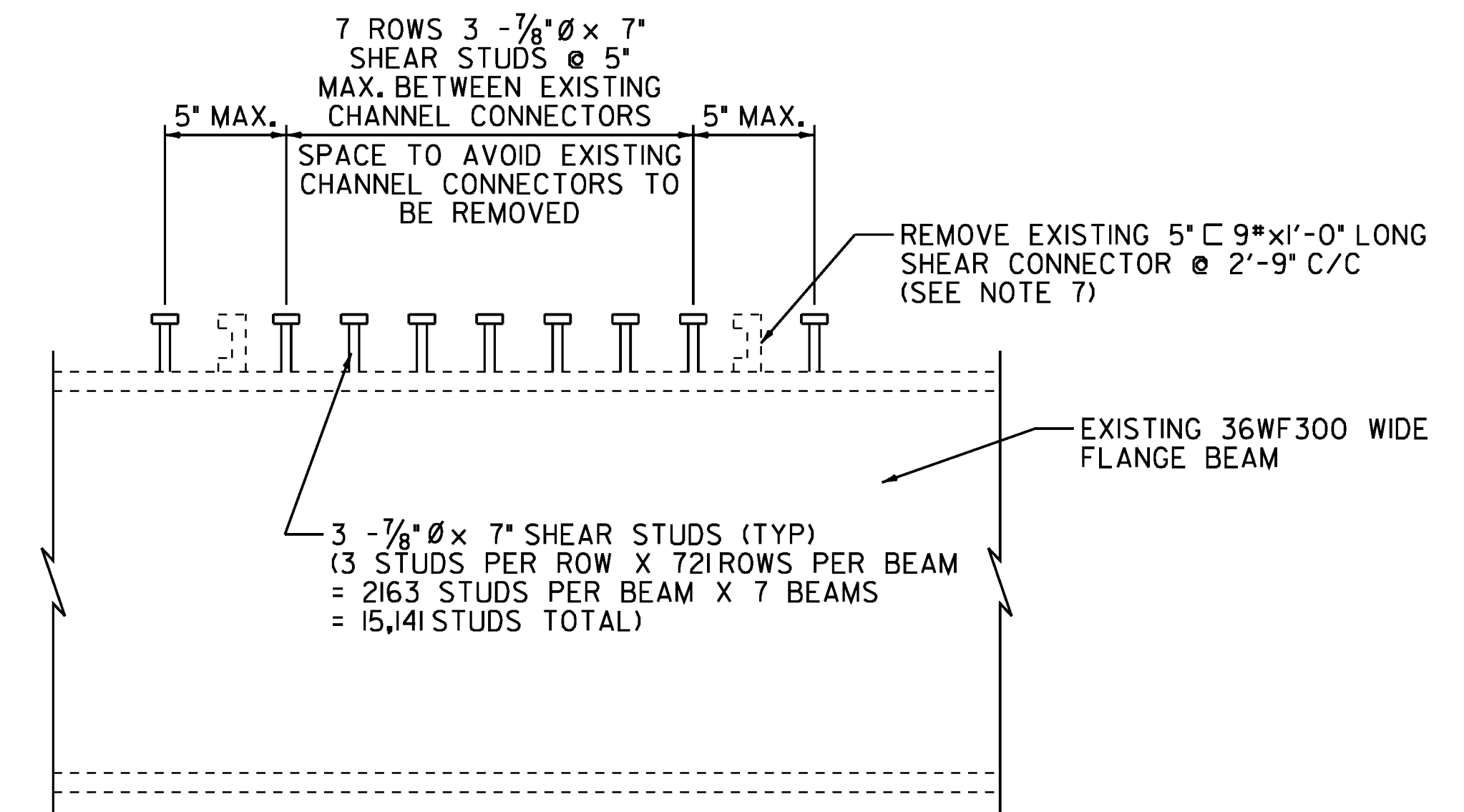
LEFT SIDE



RIGHT SIDE

CURB, SIDEWALK, AND RAIL SECTION

1" = 1'-0"

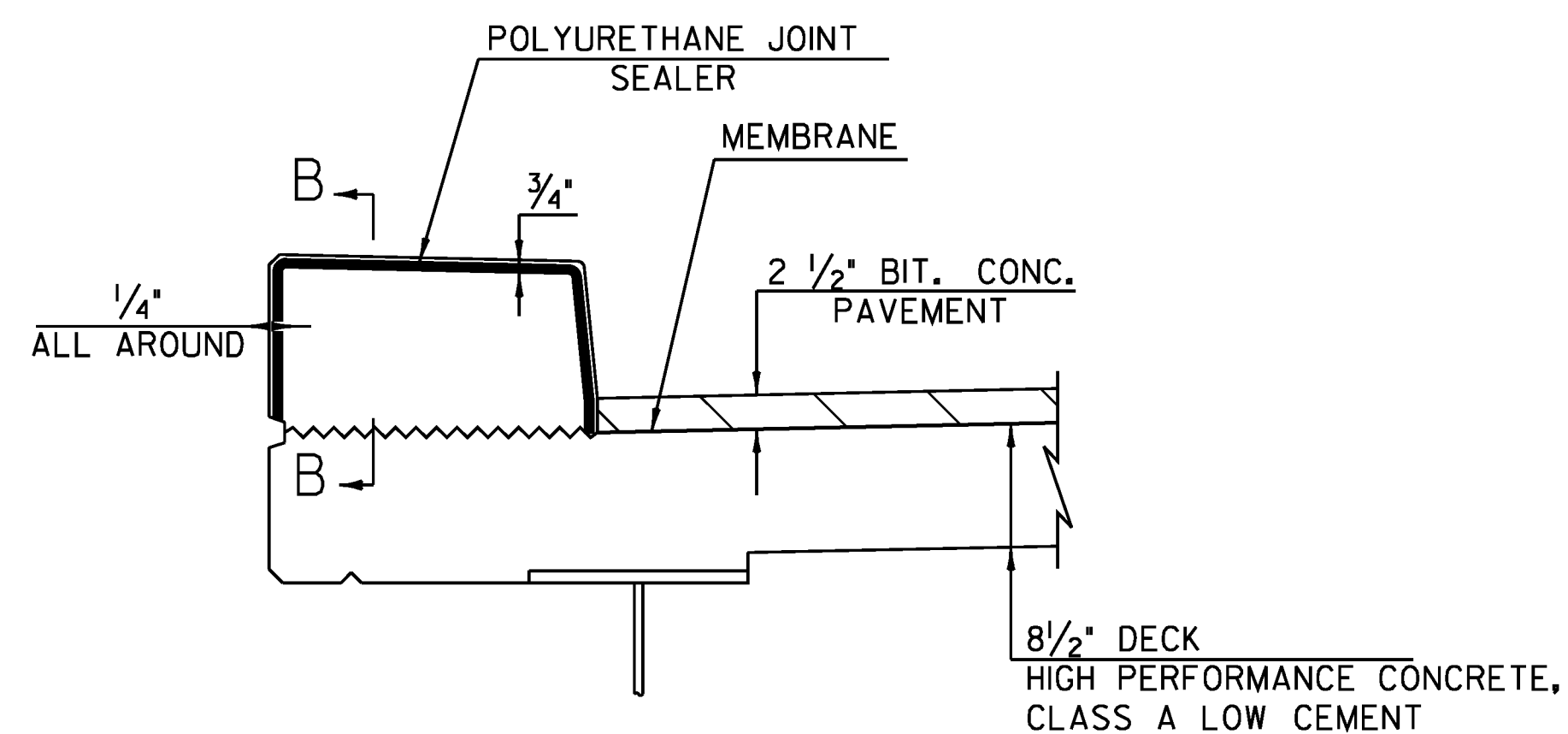


TYPICAL SHEAR STUD PLACEMENT

SCALE: 1/2" = 1'-0"

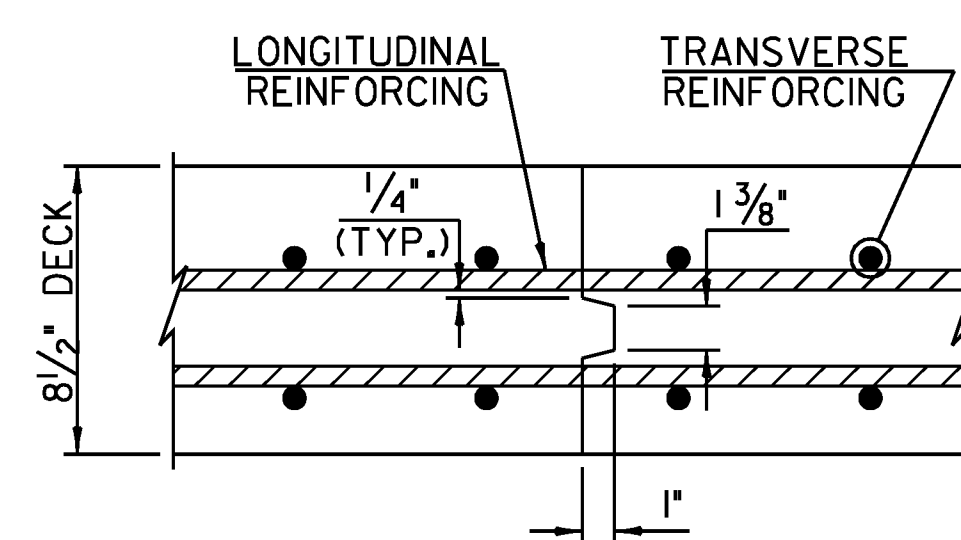
NOTES

- INDICATES AREA ALONG DECK AND UP FACE OF CURB FOR PLACEMENT OF 2 COATS OF POLYURETHANE MEMBRANE.
- MEMBRANE AND BLAST CLEANING SHALL BE INCLUDED IN THE UNIT PRICE BID FOR SHEET MEMBRANE WATERPROOFING, TORCH APPLIED.
- SHEET MEMBRANE WATERPROOFING SHALL EXTEND TO FACE OF CURB AS SHOWN.
- BLAST CLEAN 3'-0" FROM FACE OF CURB AND 3" UP CURB FACE PRIOR TO PLACING MEMBRANE.
- CONSTRUCTION JOINTS THROUGH CONCRETE CURBS AND SIDEWALKS SHALL BE SPACED A MAXIMUM OF 15'-0" CENTER TO CENTER AND SHALL BE 1'-6" MINIMUM FROM THE CENTER OF THE NEAREST BRIDGE RAIL POST. CONCRETE SHALL BE PLACED IN ALTERNATE SECTIONS WITH A MINIMUM OF 48 HOURS DELAY BETWEEN ADJACENT POURS.
- LONGITUDINAL REINFORCING SHALL PASS THROUGH CONCRETE CONSTRUCTION JOINTS.
- EXISTING SHEAR CONNECTORS SHALL BE REMOVED BY CUTTING OFF FLUSH ABOVE BOTTOM FLANGE OF CHANNEL SHEAR CONNECTOR. PAYMENT FOR REMOVAL OF EXISTING SHEAR CONNECTORS SHALL BE INCIDENTAL TO ITEM 508.15, "SHEAR CONNECTORS".



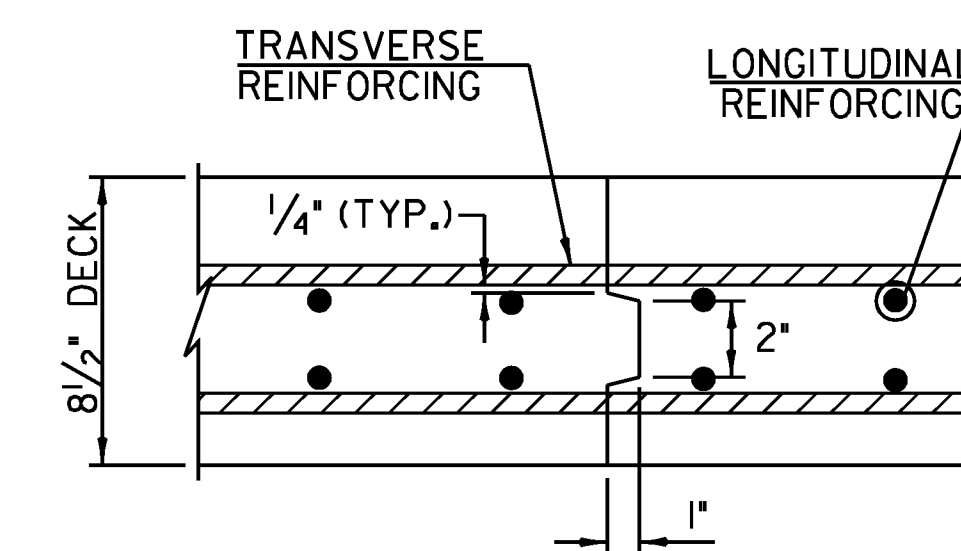
TYPICAL SECTION THROUGH CONCRETE CURB AND SIDEWALK CONSTRUCTION JOINT

NTS



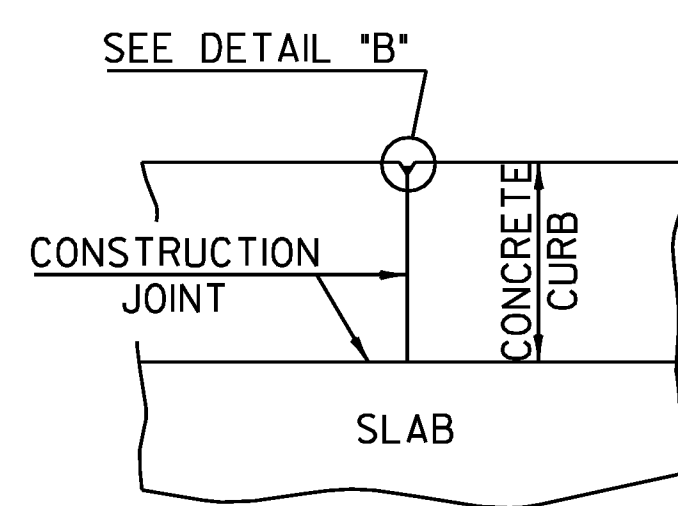
TRANSVERSE BRIDGE SLAB CONSTRUCTION JOINT DETAILS

NTS



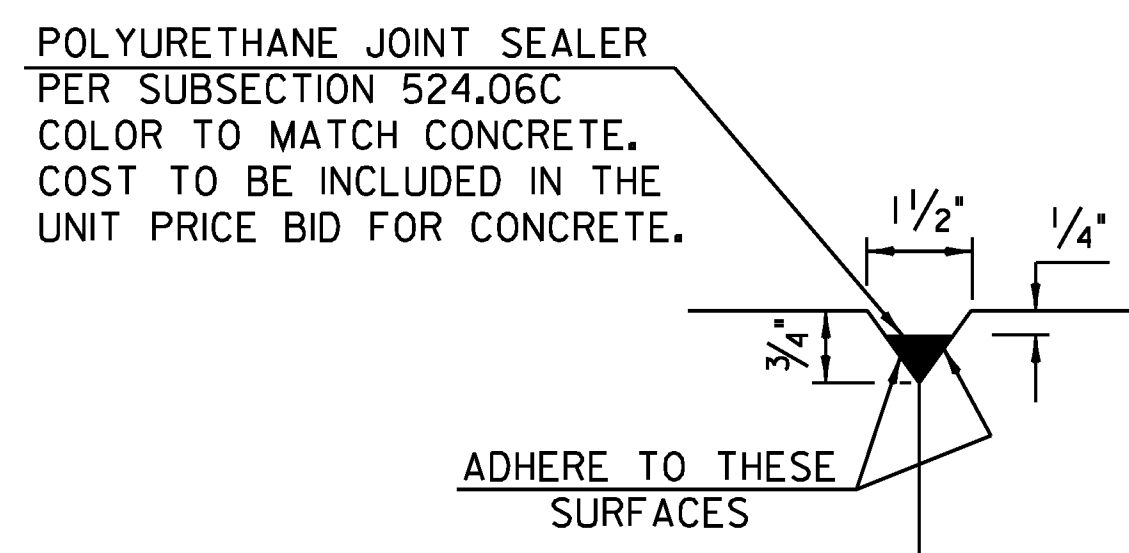
LONGITUDINAL BRIDGE SLAB CONSTRUCTION JOINT DETAILS

NTS



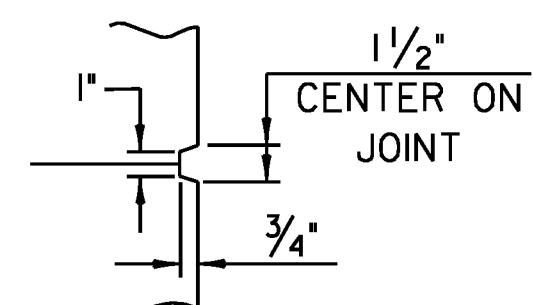
SECTION B-B

NTS



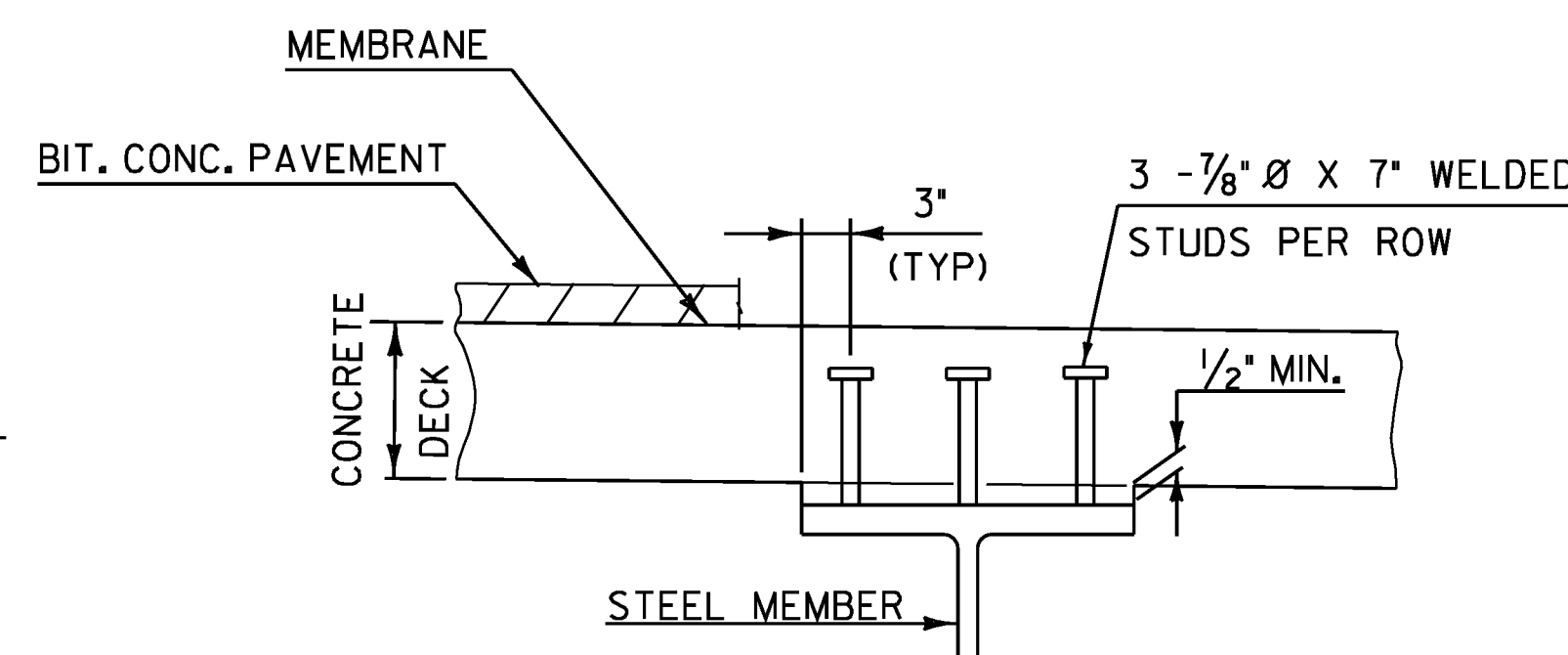
DETAIL "B"

NTS



SCORE MARK DETAIL

NTS



BEAM HAUNCH AND SHEAR CONNECTOR DETAILS

NTS

STATE OF VERMONT AGENCY OF TRANSPORTATION

Town Of	BERKSHIRE	Bridge No.	30
Highway No.	VT 118	Log Sta.	
		Surv. Sta.	
VT 118 OVER MISSISSQUOI RIVER			
SUPERSTRUCTURE DETAILS			
Designed By	J Howe	Drawn By	J Davis
Checked By	R Hebert	Date	4/2/09
		Bridge Design Supervisor	
PROJECT	BERKSHIRE	PROJECT NO.	BHF 0283(9)S
I.G.C. Info.			ZC304CRD.DGN
Bridge Sheet No.		Sheet	19 of 41