

TEMPORARY 24 INCH STOP BAR, PAINT

0+00± 20' ±LT (VT 105)
 0+00± 30' ±RT (VT 105)
 6+12± LT (VT 118)
 0+70± RT (VT 118)

TEMPORARY LETTER OR SYMBOL, PAINT

0+00±, 75' ±LT - "ONLY" (VT 105)
 0+00±, 65' ±LT - ARROW (VT 105)

TEMPORARY 4 INCH WHITE LINE, PAINT

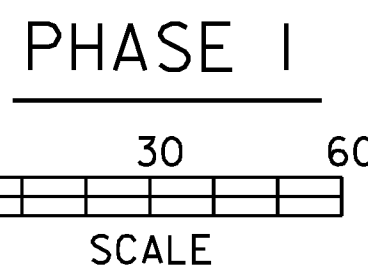
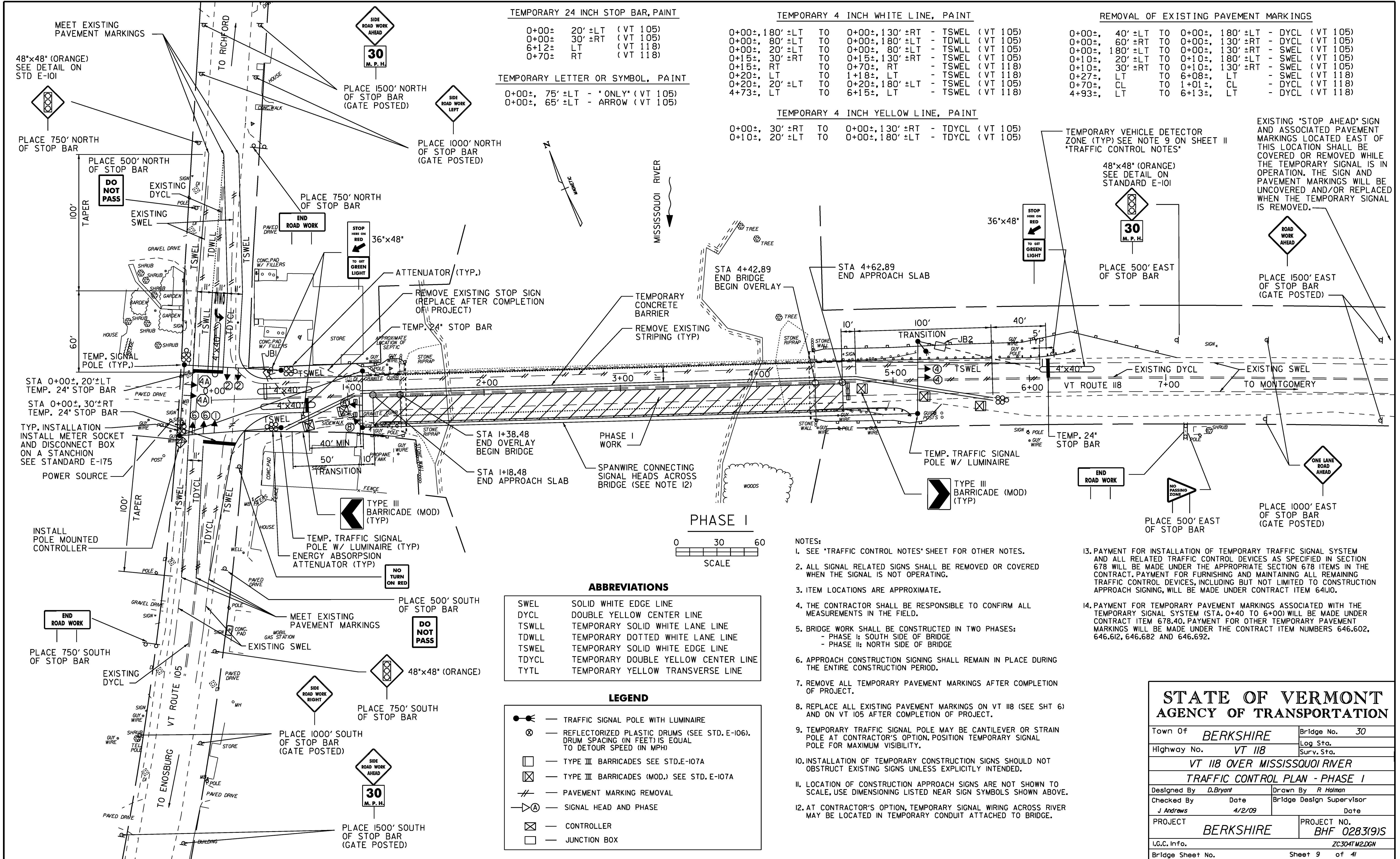
0+00±, 180' ±LT TO 0+00±, 130' ±RT - TSWEL (VT 105)
 0+00±, 80' ±LT TO 0+00±, 180' ±LT - TDWLL (VT 105)
 0+00±, 20' ±RT TO 0+00±, 80' ±LT - TSWLL (VT 105)
 0+15±, 30' ±RT TO 0+15±, 130' ±RT - TSWEL (VT 105)
 0+15±, RT TO 0+70±, RT - TSWEL (VT 118)
 0+20±, LT TO 1+18±, LT - TSWEL (VT 118)
 0+20±, 20' ±LT TO 0+20±, 180' ±LT - TSWEL (VT 105)
 4+73±, LT TO 6+15±, LT - TSWEL (VT 118)

TEMPORARY 4 INCH YELLOW LINE, PAINT

0+00±, 30' ±RT TO 0+00±, 130' ±RT - TDYCL (VT 105)
 0+10±, 20' ±LT TO 0+00±, 180' ±LT - TDYCL (VT 105)

REMOVAL OF EXISTING PAVEMENT MARKINGS

0+00±, 40' ±LT TO 0+00±, 180' ±LT - DYCL (VT 105)
 0+00±, 60' ±RT TO 0+00±, 130' ±RT - DYCL (VT 105)
 0+00±, 180' ±LT TO 0+00±, 130' ±RT - SWEL (VT 105)
 0+10±, 20' ±LT TO 0+10±, 180' ±LT - SWEL (VT 105)
 0+10±, 30' ±RT TO 0+10±, 130' ±RT - SWEL (VT 105)
 0+27±, LT TO 6+08±, LT - SWEL (VT 118)
 0+70±, CL TO 1+01±, CL - DYCL (VT 118)
 4+93±, LT TO 6+13±, LT - DYCL (VT 118)



ABBREVIATIONS

SWEL	SOLID WHITE EDGE LINE
DYCL	DOUBLE YELLOW CENTER LINE
TSWLL	TEMPORARY SOLID WHITE LANE LINE
TDWLL	TEMPORARY DOTTED WHITE LANE LINE
TSWEL	TEMPORARY SOLID WHITE EDGE LINE
TDYCL	TEMPORARY DOUBLE YELLOW CENTER LINE
TYTL	TEMPORARY YELLOW TRANSVERSE LINE

LEGEND

	TRAFFIC SIGNAL POLE WITH LUMINAIRE
	REFLECTORIZED PLASTIC DRUMS (SEE STD. E-106). DRUM SPACING (IN FEET) IS EQUAL TO DETOUR SPEED (IN MPH)
	TYPE III BARRICADES SEE STD. E-107A
	TYPE III BARRICADES (MOD.) SEE STD. E-107A
	PAVEMENT MARKING REMOVAL
	SIGNAL HEAD AND PHASE
	CONTROLLER
	JUNCTION BOX

NOTES:

- SEE "TRAFFIC CONTROL NOTES" SHEET FOR OTHER NOTES.
- ALL SIGNAL RELATED SIGNS SHALL BE REMOVED OR COVERED WHEN THE SIGNAL IS NOT OPERATING.
- ITEM LOCATIONS ARE APPROXIMATE.
- THE CONTRACTOR SHALL BE RESPONSIBLE TO CONFIRM ALL MEASUREMENTS IN THE FIELD.
- BRIDGE WORK SHALL BE CONSTRUCTED IN TWO PHASES:
 - PHASE I: SOUTH SIDE OF BRIDGE
 - PHASE II: NORTH SIDE OF BRIDGE
- APPROACH CONSTRUCTION SIGNING SHALL REMAIN IN PLACE DURING THE ENTIRE CONSTRUCTION PERIOD.
- REMOVE ALL TEMPORARY PAVEMENT MARKINGS AFTER COMPLETION OF PROJECT.
- REPLACE ALL EXISTING PAVEMENT MARKINGS ON VT 118 (SEE SHT 6) AND ON VT 105 AFTER COMPLETION OF PROJECT.
- TEMPORARY TRAFFIC SIGNAL POLE MAY BE CANTILEVER OR STRAIN POLE AT CONTRACTOR'S OPTION, POSITION TEMPORARY SIGNAL POLE FOR MAXIMUM VISIBILITY.
- INSTALLATION OF TEMPORARY CONSTRUCTION SIGNS SHOULD NOT OBSTRUCT EXISTING SIGNS UNLESS EXPLICITLY INTENDED.
- LOCATION OF CONSTRUCTION APPROACH SIGNS ARE NOT SHOWN TO SCALE, USE DIMENSIONING LISTED NEAR SIGN SYMBOLS SHOWN ABOVE.
- AT CONTRACTOR'S OPTION, TEMPORARY SIGNAL WIRING ACROSS RIVER MAY BE LOCATED IN TEMPORARY CONDUIT ATTACHED TO BRIDGE.

- PAYMENT FOR INSTALLATION OF TEMPORARY TRAFFIC SIGNAL SYSTEM AND ALL RELATED TRAFFIC CONTROL DEVICES AS SPECIFIED IN SECTION 678 WILL BE MADE UNDER THE APPROPRIATE SECTION 678 ITEMS IN THE CONTRACT. PAYMENT FOR FURNISHING AND MAINTAINING ALL REMAINING TRAFFIC CONTROL DEVICES, INCLUDING BUT NOT LIMITED TO CONSTRUCTION APPROACH SIGNING, WILL BE MADE UNDER CONTRACT ITEM 641.0.
- PAYMENT FOR TEMPORARY PAVEMENT MARKINGS ASSOCIATED WITH THE TEMPORARY SIGNAL SYSTEM (STA. 0+40 TO 6+00) WILL BE MADE UNDER CONTRACT ITEM 678.40. PAYMENT FOR OTHER TEMPORARY PAVEMENT MARKINGS WILL BE MADE UNDER THE CONTRACT ITEM NUMBERS 646.602, 646.612, 646.682 AND 646.692.

**STATE OF VERMONT
AGENCY OF TRANSPORTATION**

Town Of	BERKSHIRE	Bridge No.	30
Highway No.	VT 118	Log Sta.	
		Surv. Sta.	
VT 118 OVER MISSISSQUOI RIVER			
TRAFFIC CONTROL PLAN - PHASE I			
Designed By	D. Bryant	Drawn By	R. Halman
Checked By	J. Andrews	Date	4/2/09
		Bridge Design Supervisor	
PROJECT	BERKSHIRE	PROJECT NO.	BHF 0283(9)S
I.G.C. Info.			ZC304M2.DGN
Bridge Sheet No.		Sheet	9 of 41