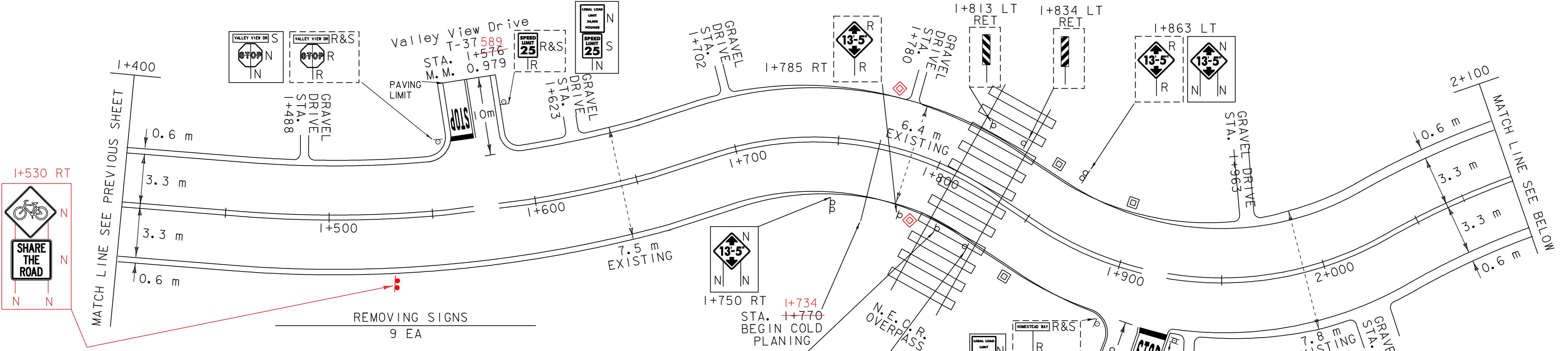


DURABLE 100mm WHITE LINE, THERMOPLASTIC  
1+400 - 2+100 SOLID LT. & SOLID RT.

DURABLE 100mm YELLOW LINE, THERMOPLASTIC  
1+400 - 2+100 SOLID LT. & SOLID RT.

TEMPORARY 100mm WHITE LINE, PAINT  
1+400 - 2+100 SOLID LT. & SOLID RT.

TEMPORARY 100mm YELLOW LINE, PAINT  
1+400 - 2+100 SOLID LT. & SOLID RT.



DURABLE 600mm STOP BAR, THERMOPLASTIC  
1+576 LT.  
1+938 RT.

DURABLE LETTER OR SYMBOL, THERMOPLASTIC  
1+576 LT. (S,T,O,P) (4 EA.)  
1+938 RT. (S,T,O,P) (4 EA.)

TEMPORARY 600mm STOP BAR, PAINT  
1+576 LT.  
1+938 RT.

TEMPORARY LETTER OR SYMBOL, PAINT  
1+576 LT. (S,T,O,P) (4 EA.)  
1+938 RT. (S,T,O,P) (4 EA.)

REHABING DI, CB, OR MH CLASS I  
1+862 ~~1+848~~ LT. (1 EA.)  
1+860 ~~1+856~~ RT. (1 EA.)  
1+907 ~~1+897~~ LT. (1 EA.)  
1+783 LT (1EA)  
1+796 RT (1EA)

SIGN LEGEND  
N = NEW  
R = REMOVE  
S = SALVAGE  
RET = RETAIN  
R & S = REMOVE & SALVAGE

DURABLE 100mm WHITE LINE, THERMOPLASTIC  
2+100 - 2+800 SOLID LT. & SOLID RT.

DURABLE 100mm YELLOW LINE, THERMOPLASTIC  
2+100 - 2+800 SOLID LT. & SOLID RT.

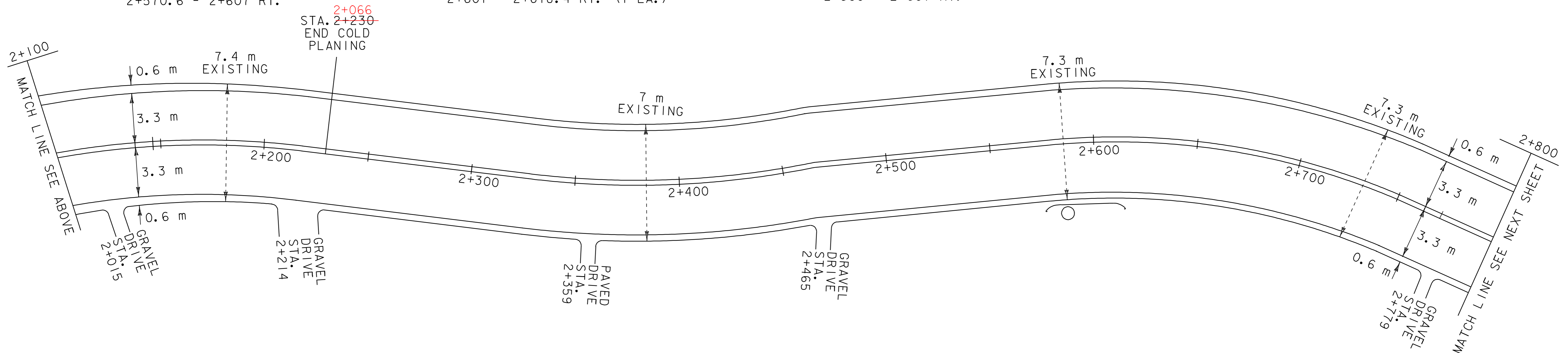
TEMPORARY 100mm WHITE LINE, PAINT  
2+100 - 2+800 SOLID LT. & SOLID RT.

TEMPORARY 100mm YELLOW LINE, PAINT  
2+100 - 2+800 SOLID LT. & SOLID RT.

STEEL BEAM GUARDRAIL, GALVANIZED  
2+570.6 - 2+607 RT.

MANUFACTURED TERMINAL SECTION, FLARED  
2+607 - 2+618.4 RT. (1 EA.)

REMOVAL AND DISPOSAL OF GUARD RAIL  
2+588 - 2+607 RT.



ANCHOR FOR STEEL BEAM G.R.  
2+572 RT (BURIED END IN BANK) (2 EA)

<b>PROJECT LAYOUT SHEET</b>  <b># 2</b>	PROJECT NAME: <b>VERNON - BRATTLEBORO</b>
	PROJECT NUMBER: <b>AC STP 2126(1)S</b>
	FILE NAME: <b>zpqve\98cl84\pci84.dgn</b> PLOT DATE: 08-SEP-2009 13:3
	PROJECT LEADER: <b>pci8402.1</b> DRAWN BY: <b>WILDER</b>
IPARM NAME: <b>pci8402.1</b> CHECKED BY: <b>PAVI_MGMI</b>	SHEET <b>13</b> OF <b>33</b>