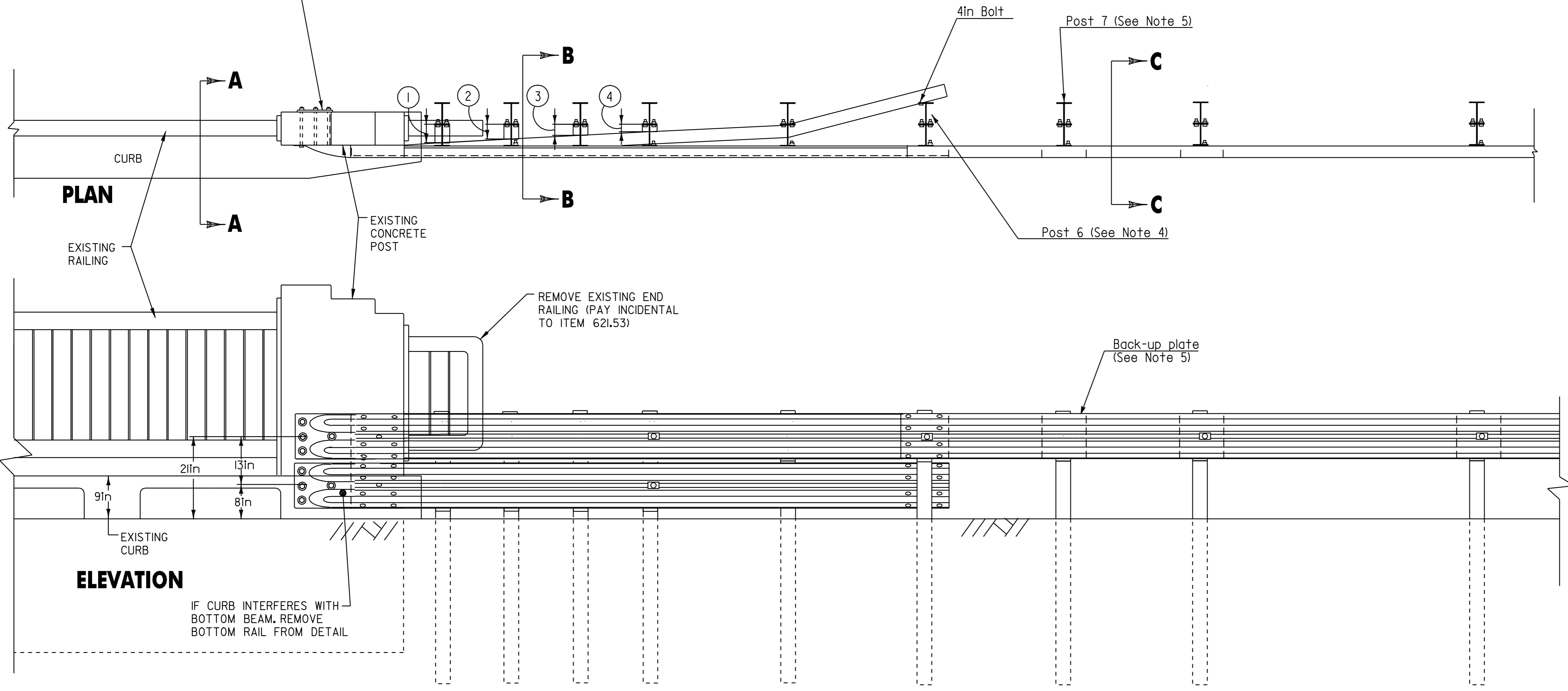


NOTES

1. THIS GUARD RAIL TRANSITION IS FOR CONNECTION TO A VERTICAL CONCRETE BRIDGE AND SHOULD NOT BE CONNECTED DIRECTLY TO A CONCRETE SAFETY SHAPE.
2. BOTTOM BEAM BLOCKS ARE OFFSET DRILLED TO SIT SQUARELY ON THE POST FLANGE. BLOCKS ARE ATTACHED WITH $\frac{3}{8}$ " CARRIAGE BOLTS.
3. THE RUBRAIL MAY BE SHOP BENT IN THE LAST 3 FEET TO FACILITATE INSTALLATION.
4. POSTS 1, 2, 3, 4, AND 6 REQUIRE AN ADDITIONAL HOLE TO ATTACH LOWER BLOCKS AND OR LOWER BEAM.
5. AT POST 7, BACK-UP PLATE BOLTED TO BLOCK ONLY.
6. POSTS WILL BE 6 FT STEEL POSTS.

Epoxy grouted $\frac{3}{4}$ in o anchor bolt or $\frac{3}{4}$ in H.S. hexthrough bolts with $\frac{1}{8}$ in bearing plate.



No Scale

TERMINAL CONNECTOR FOR STEEL BEAM GUARD RAIL W/STEEL POSTS		DESIGNED BY	BCE/PJM	DATE	6-06
		DRAWN BY	C.E.A., INC.	DATE	6-06
		DESIGN FILE NO.	p98cl82.dgn		
PRF FILE	p98cl82+c.i	DATE PLOTTED	10-FEB-2010 14:59		
		PROJ. NAME	MONTGOMERY - BERKSHIRE		
		PROJ. NO.	STP 2125(1)S		
		SHEET	40	OF	41 SHEETS