

NOTE: SEE SHEET 40 FOR TERMINAL CONNECTOR DETAILS.

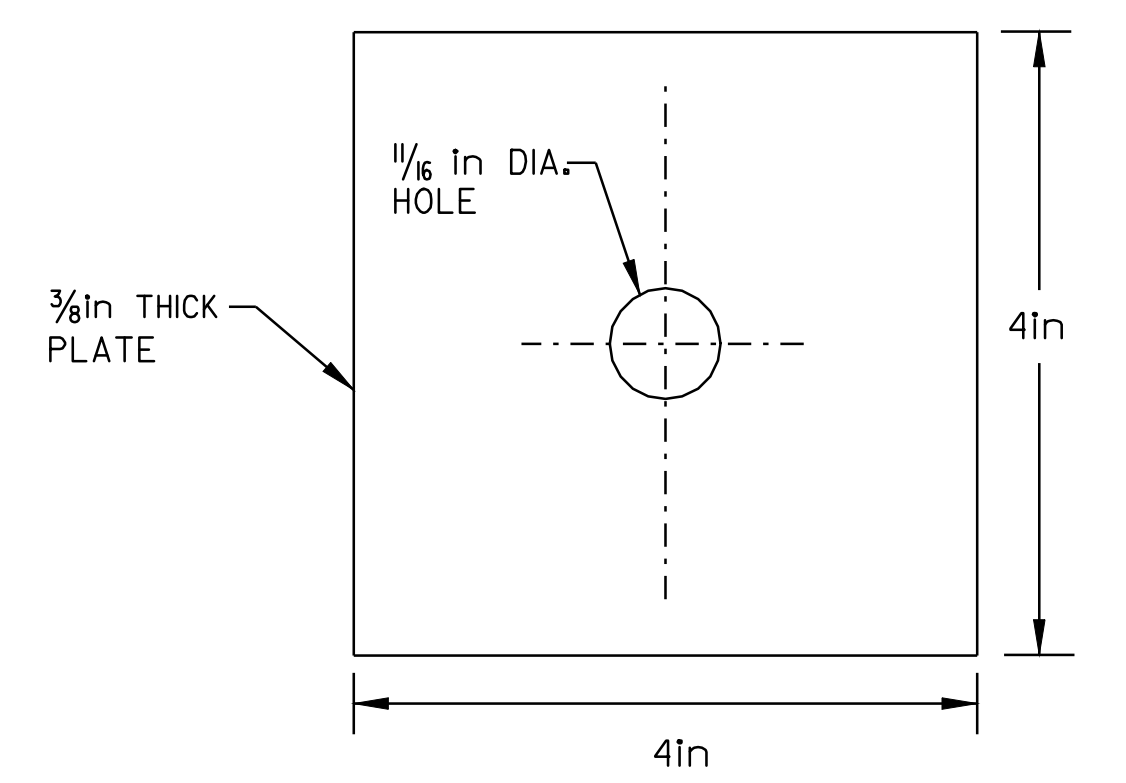
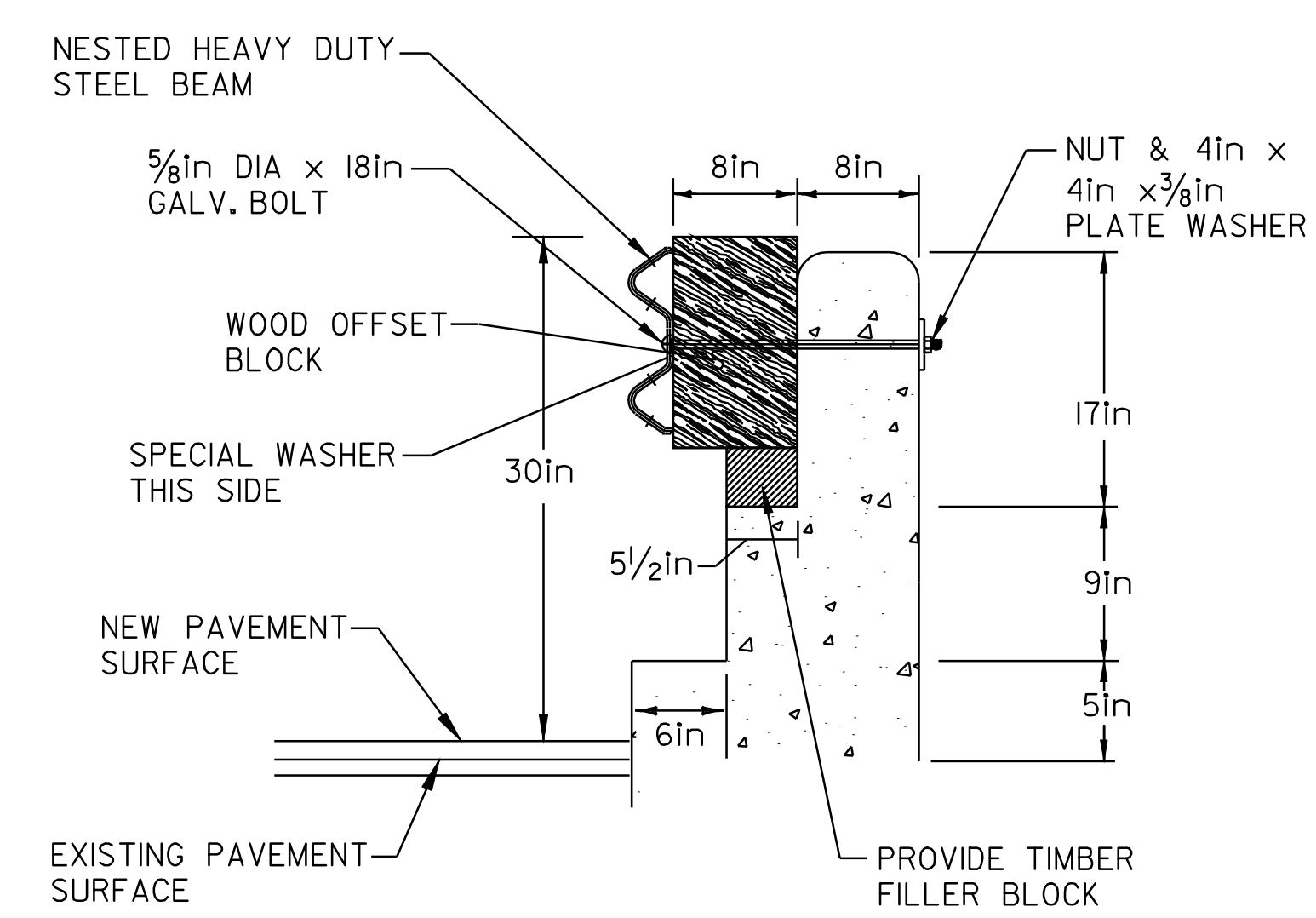
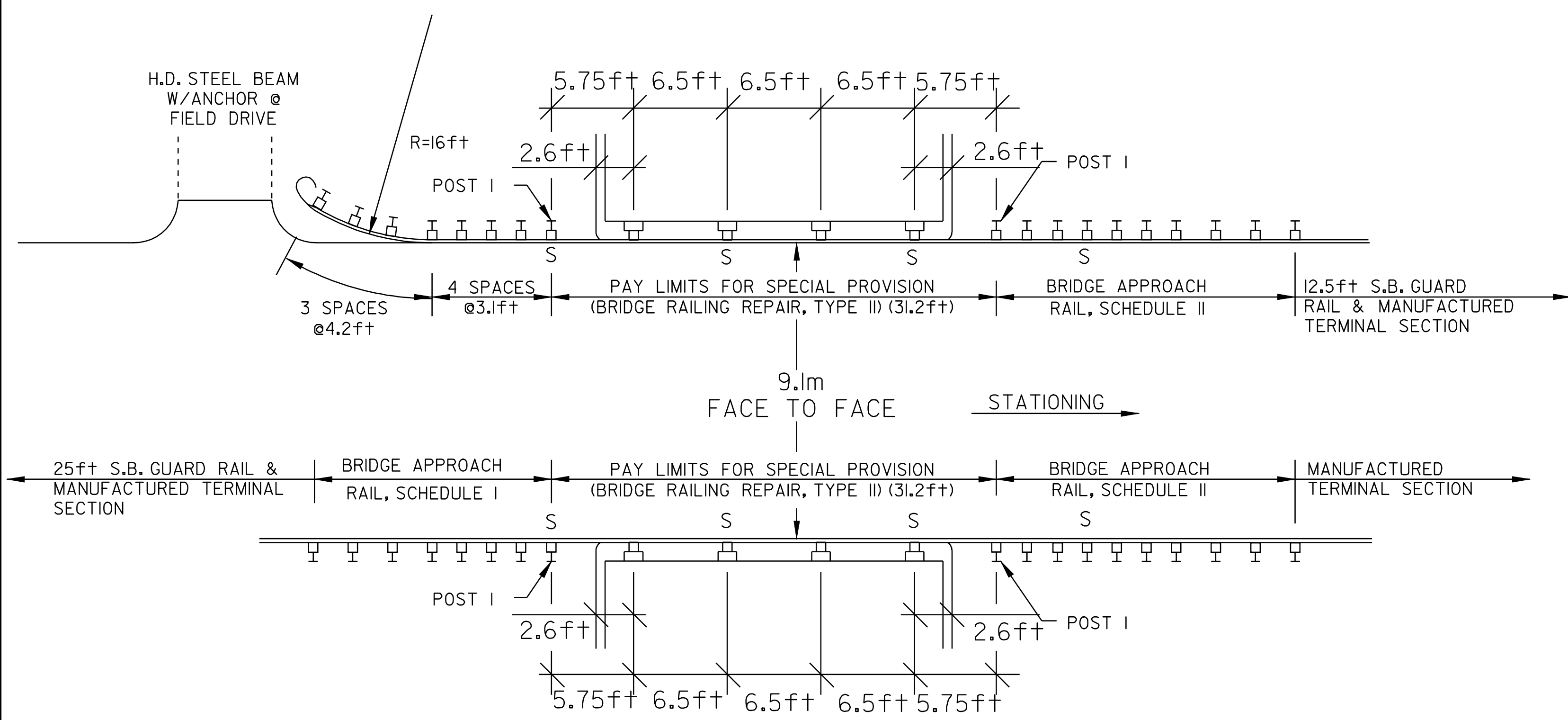
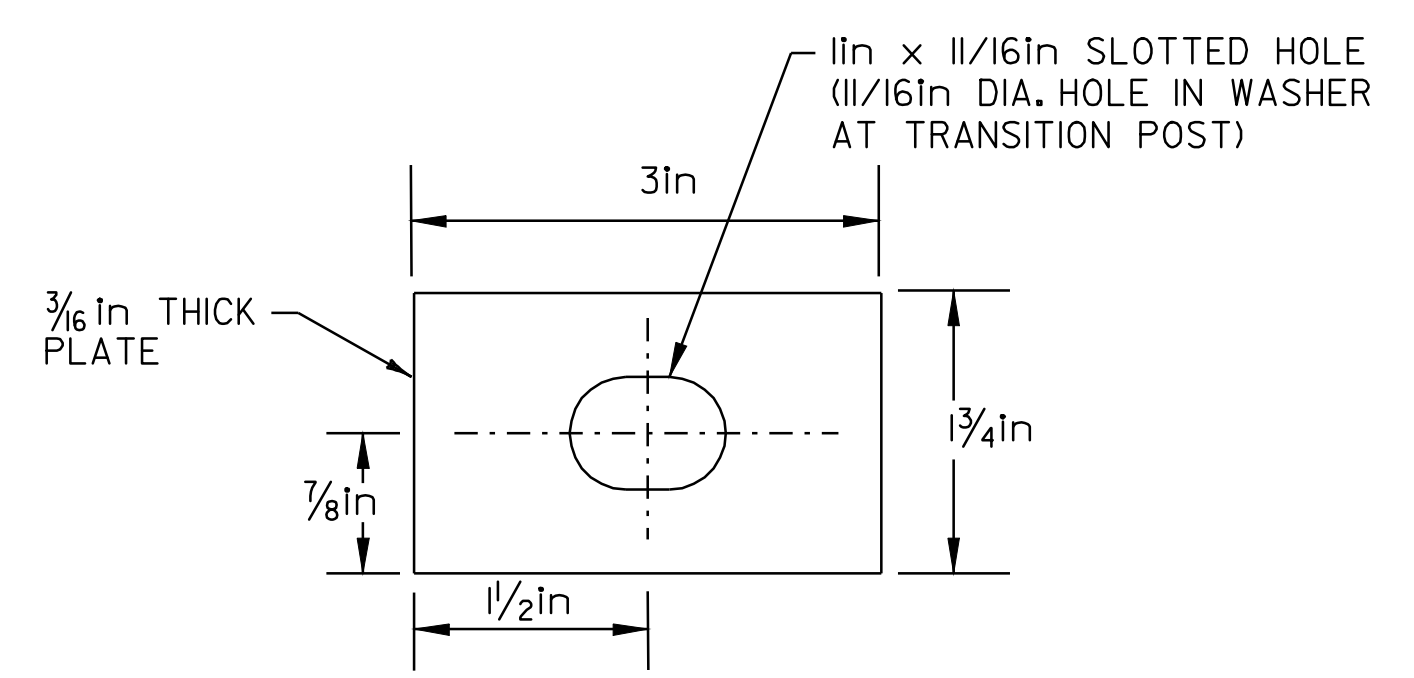


PLATE WASHER DETAIL
(MATERIAL SHALL MEET AASHTO M270/M270 GRADE 345W)

NOTE: BOLTS, NUTS & WASHERS SHALL BE GALVANIZED AND CONFORM TO SECTION 714.05.



SPECIAL WASHER DETAIL
(MATERIAL SHALL MEET AASHTO M270/M270 GRADE 345W)

BRIDGE DETAIL SHEET #3

DESIGNED BY	BCE/PJM	DATE	6-06
DRAWN BY	C.E.A., INC.	DATE	6-06
DESIGN FILE NO.	p98cl82.dgn		
PRF FILE	p98cl82br3.i	DATE PLOTTED	10-FEB-2010 14:59
PROJ. NAME	MONTGOMERY - BERKSHIRE		
PROJ. NO.	STP 2125(1)S		
SHEET	38	OF	41 SHEETS