

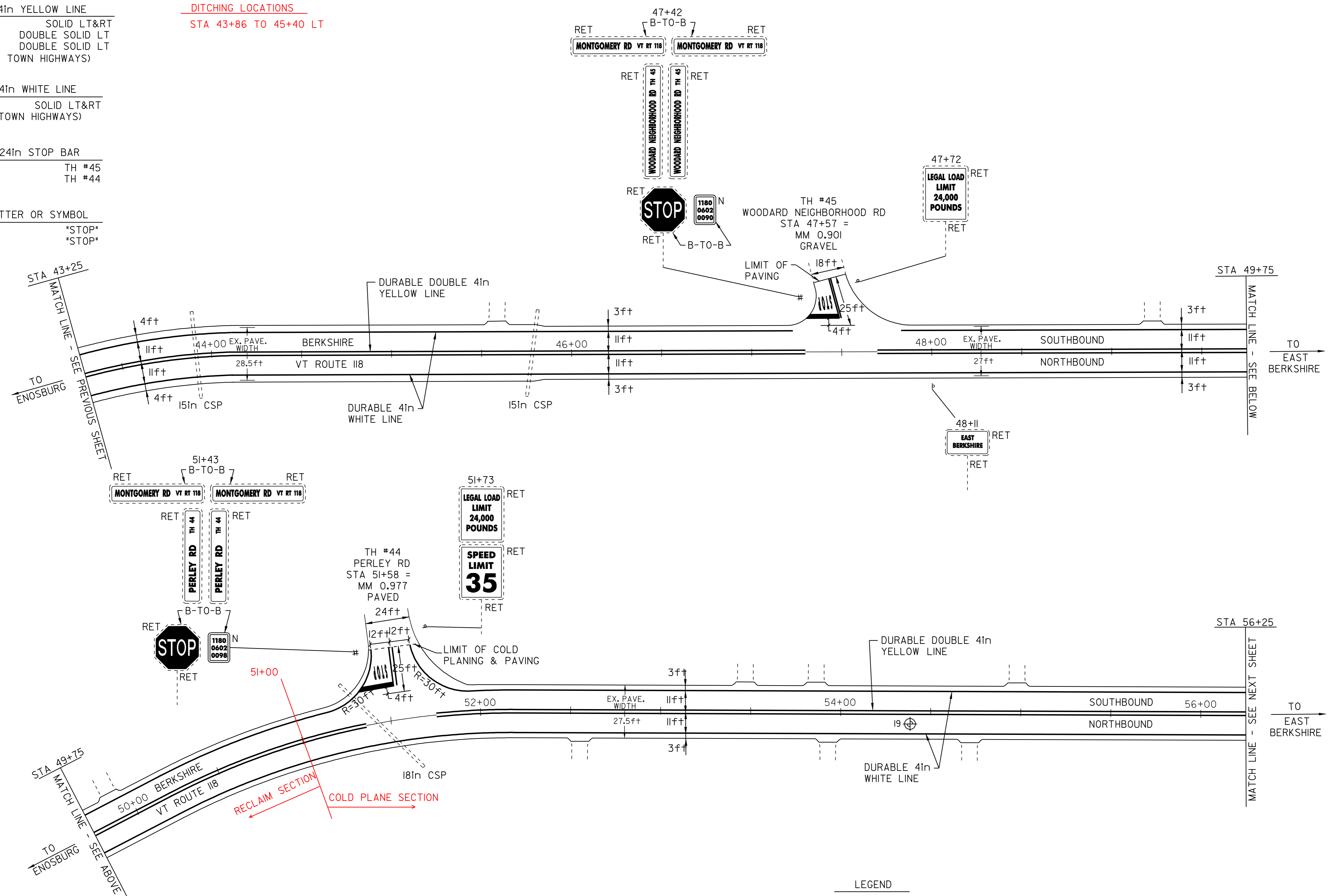
TEMPORARY AND DURABLE 4in YELLOW LINE
 STA 43+25 TO 56+25 SOLID LT&RT
 STA 47+57 DOUBLE SOLID LT
 STA 51+58 DOUBLE SOLID LT
 (WITH CENTERLINE BREAKS FOR TOWN HIGHWAYS)

DITCHING LOCATIONS
 STA 43+86 TO 45+40 LT

TEMPORARY AND DURABLE 4in WHITE LINE
 STA 43+25 TO 56+25 SOLID LT&RT
 (WITH EDGE LINE BREAKS FOR TOWN HIGHWAYS)

TEMPORARY AND DURABLE 24in STOP BAR
 STA 47+57 LT TH #45
 STA 51+58 LT TH #44

TEMPORARY AND DURABLE LETTER OR SYMBOL
 STA 47+57 LT "STOP"
 STA 51+58 LT "STOP"



PAVEMENT CORES -

#	TOTAL DEPTH (in)	SOLID CORE	DRAINABLE BASE	COMMENTS
19	6.5	YES	NO	VILLAGE AREA

NOTE:
 - NO PCC UNDER ANY CORES
 - NO CORES OVER ASPHALTED
 - NO SHOULDER CORES

- LEGEND
- N = NEW
 - R = REMOVE
 - R&S = REMOVE & SALVAGE
 - S = SALVAGE
 - RET = RETAIN
 - B-T-O-B = BACK TO BACK
 - CATCH BASIN/DI
 - EXISTING THROAT DI
 - I = MARKER POST
 - UTILITY POLE
 - UTIL. POLE W/UNDERGROUND UTIL.
 - DRIVE

PAVING PROJECT LAYOUT SHEET #12

DESIGNED BY	BCE/PJM	DATE	6-06
DRAWN BY	C.E.A., INC.	DATE	6-06
DESIGN FILE NO.	p98cl82.dgn		
PRF FILE	p98cl82l12.1	DATE PLOTTED	10-FEB-2010 14:40
PROJ. NAME	MONTGOMERY - BERKSHIRE		
PROJ. NO.	STP 2125(1)S		
SHEET	22	OF	41 SHEETS