

- COLD PLANING DETAIL @ BRIDGES -

MONTGOMERY

~~BRIDGE #15 - STA 296+31~~

~~BRIDGE #19 - STA 441+14~~

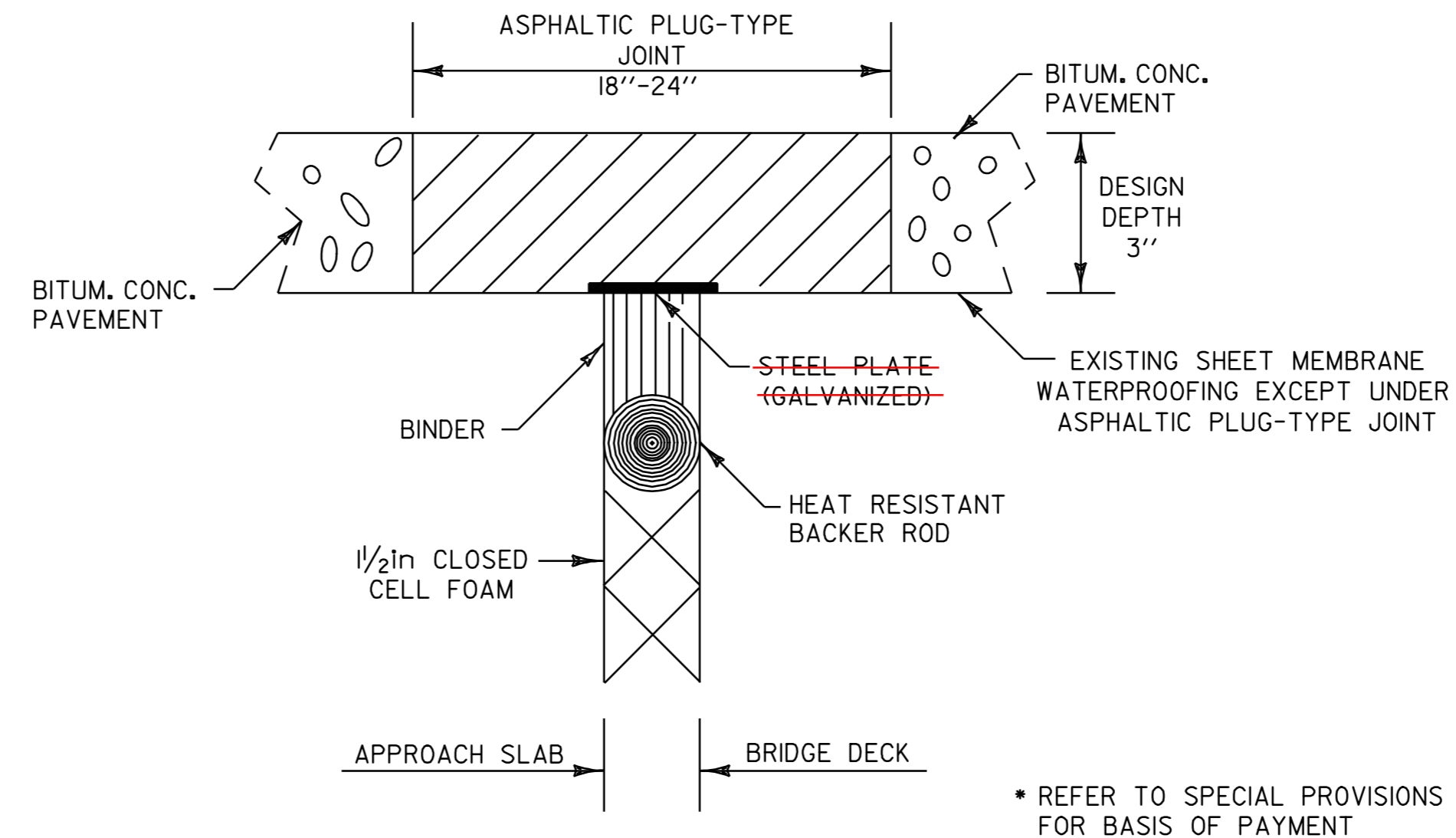
~~BRIDGE #20 - STA 450+12~~

BERKSHIRE

BRIDGE #30 - STA 79+56

NOTE:

PRECAUTIONS MUST BE TAKEN ON BRIDGE #30 TO AVOID DAMAGE TO THE EXISTING MEMBRANE. ANY COSTS ASSOCIATED WITH REPAIRING OR REPLACING THIS MEMBRANE, FROM DAMAGE DURING COLD PLANE OPERATIONS, SHALL BE THE RESPONSIBILITY OF THE CONTRACTOR.



- ASPHALTIC PLUG TYPE JOINT DETAIL -

LOCATION

MONTGOMERY

- ~~BRIDGE #15 (28ft) - STA 295+90~~
- 30.6 BRIDGE #15 (28ft) - STA 296+55
- 36.5 BRIDGE #19 (30ft) - STA 440+40
- 34.75 BRIDGE #19 (30ft) - STA 441+27 00
- 36.5 BRIDGE #19 (30ft) - STA 442+15
- 34.75 BRIDGE #20 (30ft) - STA 449+50
- 34.75 BRIDGE #20 (30ft) - STA 450+42 42
- 34.75 BRIDGE #20 (30ft) - STA 450+75
- BRIDGE #20 (34.75) STA 449+83
- BRIDGE #19 (34.75) STA 441+60

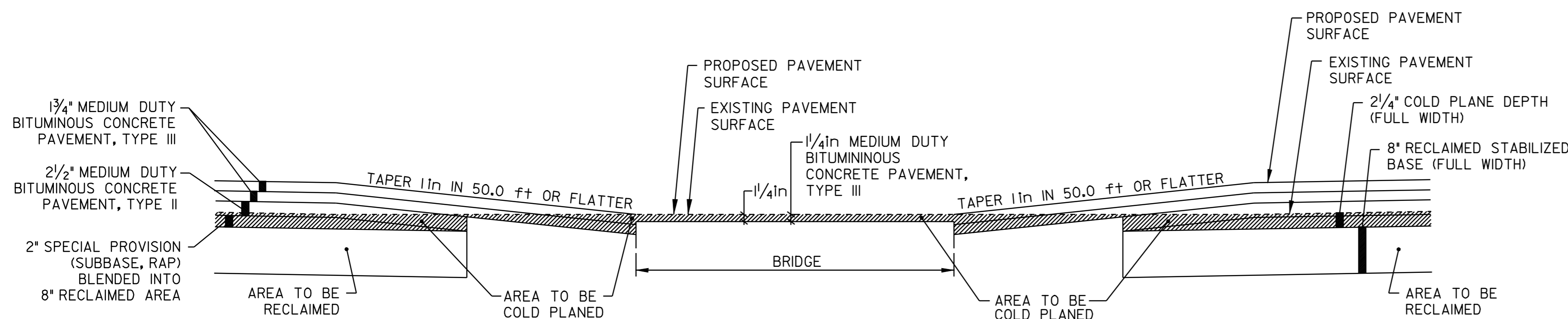
- ASPHALTIC PLUG BRIDGE JOINT - GENERAL NOTES

INSTALLATION:

1. THE JOINT SHALL BE LOCATED CENTRALLY OVER THE DECK EXPANSION GAP OR FIXED JOINT MARKED OUT TO THE MANUFACTURERS RECOMMENDED WIDTH.
2. THE JOINT SHALL BE EXCAVATED AS SHOWN ON THE PLANS BY USE OF SAWS AND PNEUMATIC HAMMER OR A HAMMER AND CHISEL.
3. THE JOINT SHALL BE BLAST CLEANED OF DEBRIS AND ASPHALT. THE JOINT AREA SHALL BE THOROUGHLY DRIED USING HOT COMPRESSED AIR PRIOR TO APPLYING BINDER MATERIAL.
4. SPALLED AND DEFECTIVE CONCRETE SHALL BE REPAIRED WITH AN APPROVED MATERIAL AS AGREED UPON BY THE RESIDENT ENGINEER.
5. PROPERLY SIZED HEAT RESISTANT BACKER ROD SHALL BE PLACED IN THE MOVEMENT GAP ALLOWING FOR 1 INCH +/- OF BINDER ABOVE THE ROD.
6. THE BINDER MATERIAL SHALL BE HEATED AND PLACED AS RECOMMENDED BY THE MANUFACTURER.
7. PLACE 1/4 INCH THICK BY 8 INCH WIDE SECTIONS OF STEEL PLATE OVER THE CENTER OF THE MOVEMENT GAP, SECURE PLATES FROM MOVING BY INSERTING LOCATING PINS THROUGH THE PRESTAMPED HOLES INTO THE BACKER ROD AND COVER WITH HOT BINDER.
 - a. THE STEEL PLATES MAY BE OMITTED WHERE THE APPROACH SLAB IS COVERED WITH A STONE BASE OR BITUMINOUS PAVEMENT, AND VERTICAL MOVEMENT OF THE PLATES MIGHT OCCUR.
8. THE BINDER MATERIAL AND AGGREGATE SHALL BE HEATED AND MIXED AS RECOMMENDED BY THE MANUFACTURER.
9. THE INSTALLATION OF MATERIAL, COMPACTION AND TOPCOATING SHALL BE AS RECOMMENDED BY THE MANUFACTURER.
10. IMMEDIATELY AFTER TOPCOATING, AN ANTI-SKID MATERIAL SHALL BE CAST OVER THE JOINT TO REDUCE THE RISK OF TRACKING.
11. JOINT SHALL BE PROTECTED FROM TRAFFIC UNTIL THE MATERIAL HAS COOLED TO 125 DEGREES F +/-.

WEATHER LIMITATIONS:

1. BINDER MATERIAL SHALL BE APPLIED ONLY WHEN THE FOLLOWING CONDITIONS PREVAIL:
 - a. THE AMBIENT AIR TEMPERATURE IS AT LEAST 50 DEGREES F AND RISING.
 - b. THE ROAD SURFACE IS SUFFICIENTLY DRY.
 - c. WEATHER CONDITIONS OR OTHER CONDITIONS ARE FAVORABLE AND ARE EXPECTED TO REMAIN SO FOR THE PERFORMANCE OF THE SATISFACTORY WORK.



- COLD PLANING DETAIL @ BRIDGES -

MONTGOMERY

BRIDGE #23 - STA 535+81

ENOSBURG

BRIDGE #24 - STA 32+84

BERKSHIRE

BRIDGE #25 - STA 17+89

PROJECT TYPICAL SHEET #3

| | | | |
|-----------------|------------------------|--------------|-----------------|
| DESIGNED BY | BCE/PJM | DATE | 6-06 |
| DRAWN BY | C.E.A., INC. | DATE | 6-06 |
| DESIGN FILE NO. | p98cl82.dgn | | |
| PRF FILE | p98cl82+yp3.1 | DATE PLOTTED | 10-FEB-2010 14: |
| PROJ. NAME | MONTGOMERY - BERKSHIRE | | |
| PROJ. NO. | STP 2125(1)S | | |
| SHEET | 4 | OF | 41 SHEETS |