

TEMPORARY AND DURABLE 100 mm YELLOW LINE

STA 8+100	TO	8+563	SOLID LT & RT
STA 8+569	TO	8+607	DOUBLE SOLID RT (TH #17)
STA 8+575	TO	8+607	SOLID LT & RT
STA 8+613	TO	8+700	DOUBLE SOLID LT (SA #3)
STA 8+619	TO	8+700	SOLID LT & RT

TEMPORARY AND DURABLE 100 mm WHITE LINE

STA 8+100	TO	8+601	SOLID LT
STA 8+625	TO	8+700	SOLID LT
STA 8+100	TO	8+557	SOLID RT
STA 8+581	TO	8+700	SOLID RT

TEMPORARY AND DURABLE 600 mm STOP BAR

STA 8+569	RT	(TH #17)
STA 8+613	LT	(SA #3)

TEMPORARY AND DURABLE LETTER OR SYMBOL

STA 8+569	RT	- "STOP" (TH #17)
STA 8+613	LT	- "STOP" (SA #3)

STEEL BEAM GUARDRAIL

STA 8+410	TO	8+500	LT
STA 8+573	TO	8+609	LT
STA 8+617	TO	8+631	LT
STA 8+682	TO	8+700	RT

REMOVAL & DISP. OF GUARDRAIL

STA 8+399	TO	8+465	LT
STA 8+573	TO	8+609	LT
STA 8+617	TO	8+631	LT
STA 8+671	TO	8+700	RT

ANCHOR FOR STEEL BEAM RAIL

STA 8+500	LT
STA 8+573	LT (-2)
STA 8+631	RT

MANUFACTURED TERMINAL SECTION

STA 8+410	TO	8+421	LT
STA 8+671	TO	8+682	RT

CHANGING ELEV. OF DI, CB OR MH REHABILITATION OF DI, CB OR MH

STA 8+164	RT
STA 8+195	RT
STA 8+234	RT
STA 8+439	RT
STA 8+684	RT

ERECTING SALVAGED SIGNS

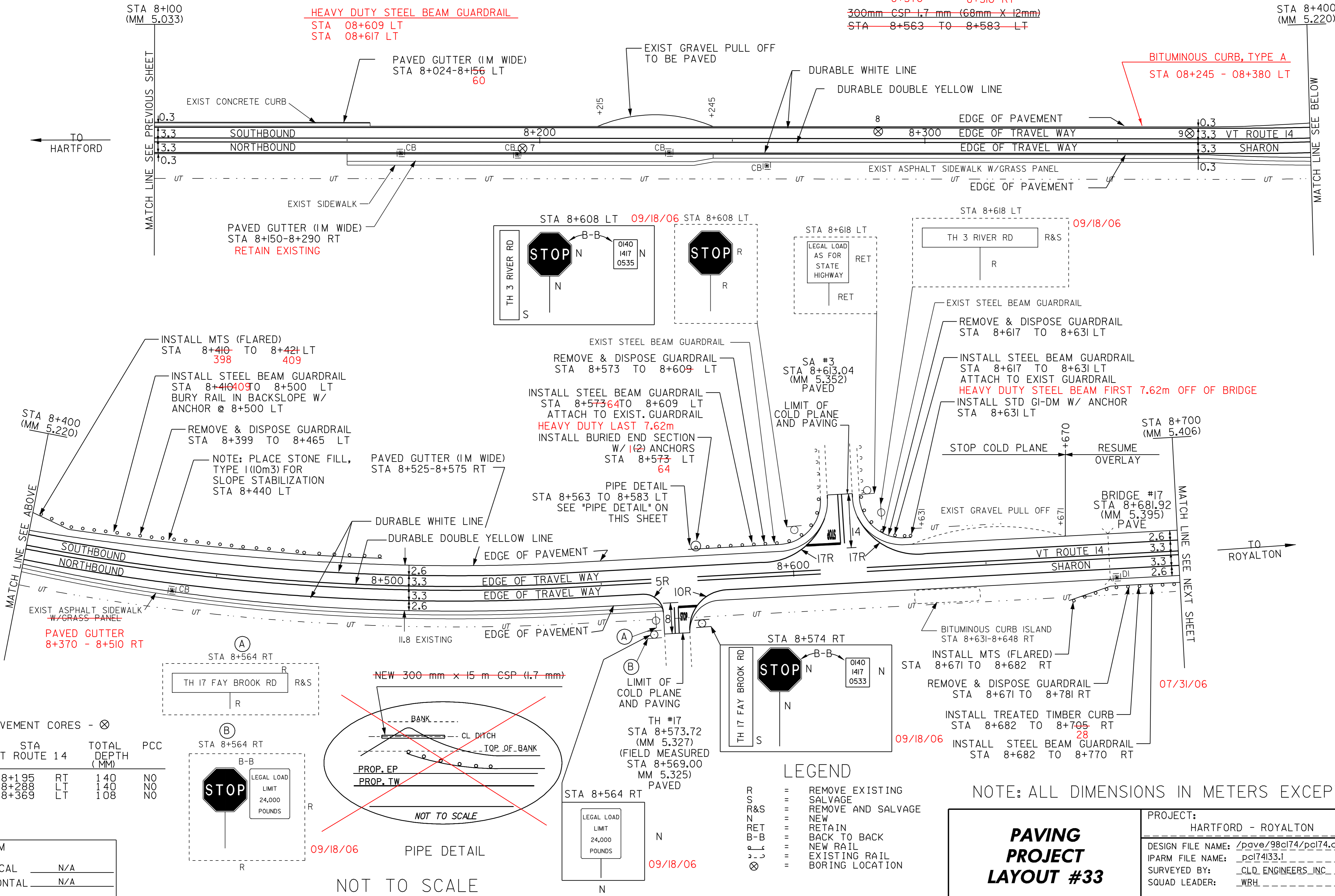
AS SHOWN - 2

REMOVING SIGNS

AS SHOWN - 4

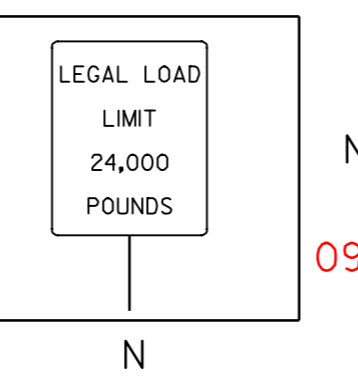
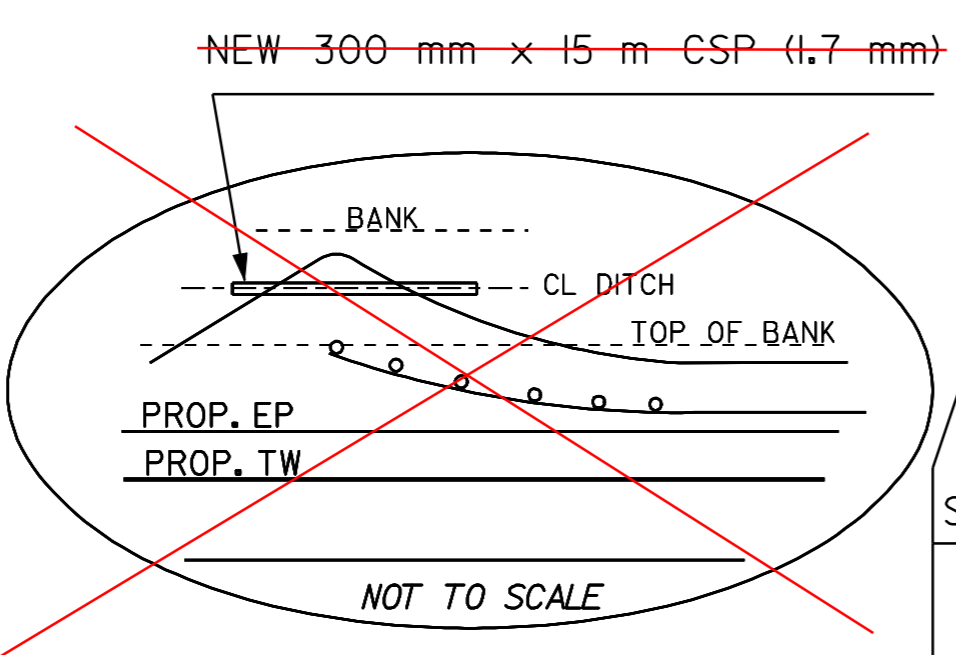
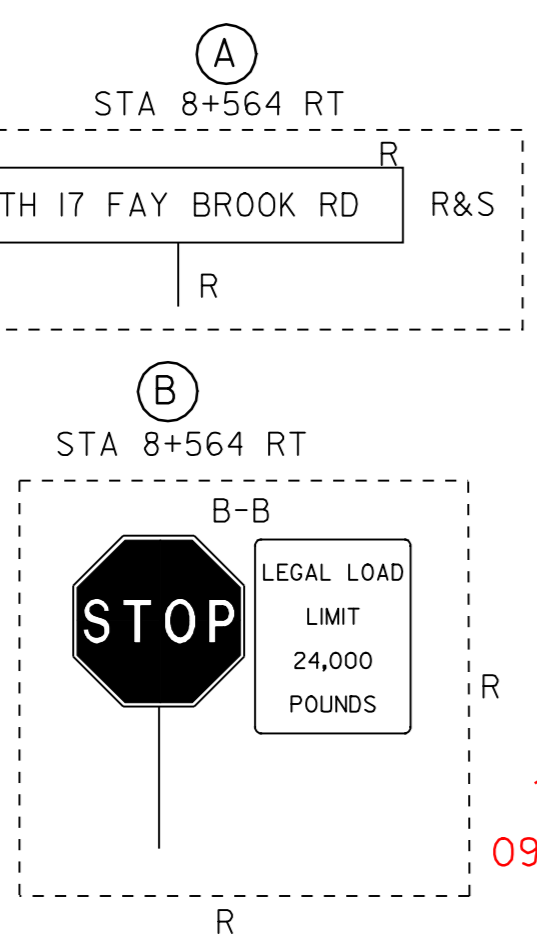
TREATED TIMBER CURB

STA 8+682	TO	8+700	RT
-----------	----	-------	----



PAVEMENT CORES - ⊗

#	STA	VT ROUTE 14	TOTAL DEPTH (MM)	PCC
7	8+195	RT	140	NO
8	8+288	LT	140	NO
9	8+369	LT	108	NO



- LEGEND**
- R = REMOVE EXISTING
 - S = SALVAGE
 - R&S = REMOVE AND SALVAGE
 - N = NEW
 - RET = RETAIN
 - B-B = BACK TO BACK
 - - - = NEW RAIL
 - - - = EXISTING RAIL
 - ⊗ = BORING LOCATION

NOTE: ALL DIMENSIONS IN METERS EXCEPT AS INDICATED

PAVING PROJECT LAYOUT #33

PROJECT: HARTFORD - ROYALTON	PROJECT NO.: STP 212(1)S
DESIGN FILE NAME: /pave/98cl74/pol74.dgn	PLOT DATE: 21-MAR-2007
IPARM FILE NAME: pol74i33.i	SURVEY DATE: 8/99
SURVEYED BY: CLD ENGINEERS INC	DRAWN BY: REB
SQUAD LEADER: WRH	SHEET: 43 OF 64