

TEMPORARY AND DURABLE 100 mm YELLOW LINE
 STA 2+850 TO 2+882 SOLID LT & RT
 STA 2+888 DOUBLE SOLID RT (TH #28)
 STA 2+894 TO 3+348 SOLID LT & RT
 STA 3+345 DOUBLE SOLID RT (TH #11)
 STA 3+360 TO 3+364 SOLID LT & RT
 STA 3+364 TO 3+450 SOLID LT DASHED RT

TEMPORARY AND DURABLE 100 mm WHITE LINE
 STA 2+850 TO 3+450 SOLID LT
 STA 2+850 TO 2+876 SOLID RT
 STA 2+900 TO 3+333 SOLID RT
 STA 3+370 TO 3+450 SOLID RT

TEMPORARY AND DURABLE 600 mm STOP BAR
 STA 2+888 RT (TH #28)
 STA 3+345 RT (TH #11)

TEMPORARY AND DURABLE LETTER OR SYMBOL
 STA 2+888 RT - "STOP" (TH #28)
 STA 3+345 RT - "STOP" (TH #11)

REHABILITATION OF DI, CB OR MH
 STA 2+984 RT OTDI
 STA 3+337 RT OTDI

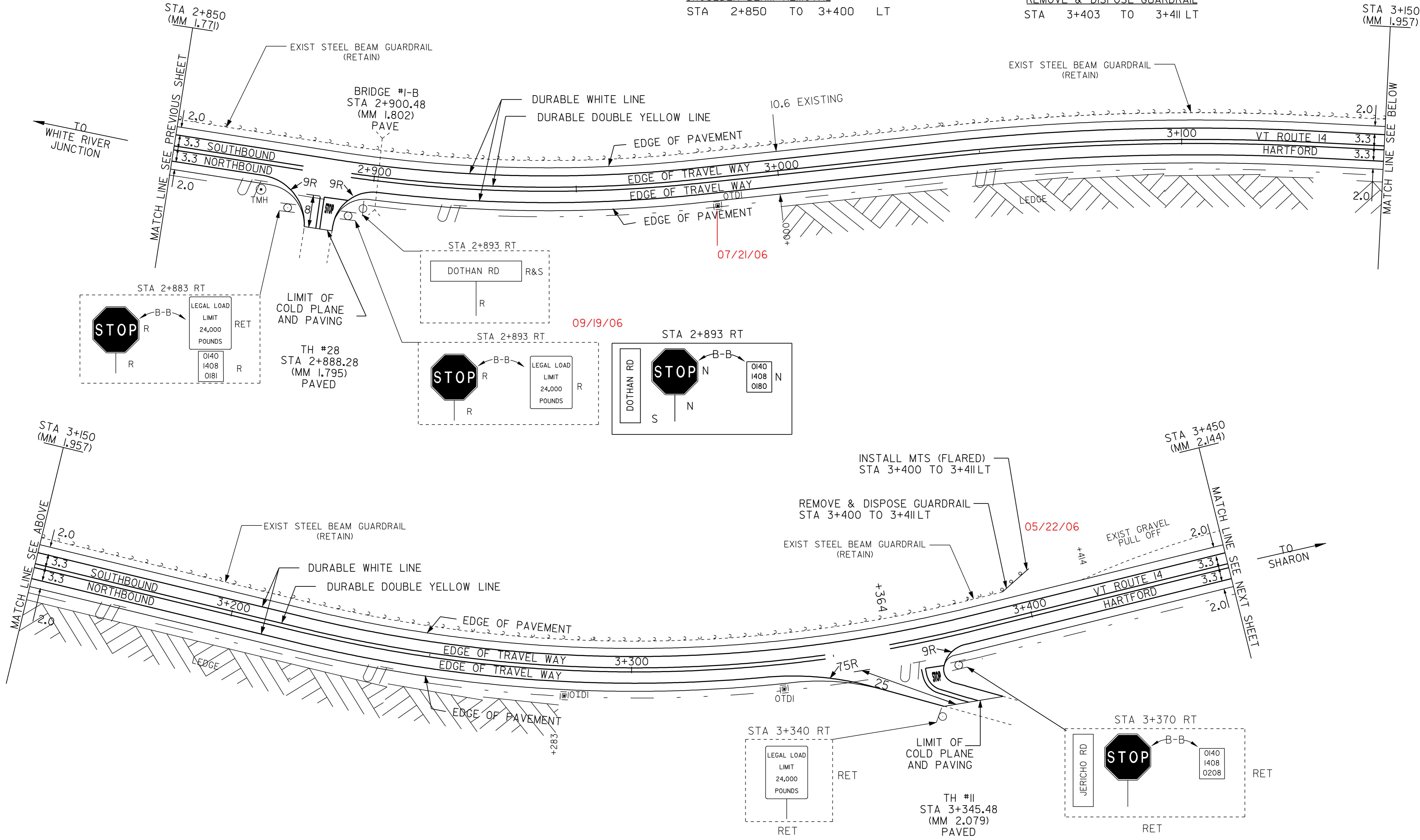
SHOULDER BERM REMOVAL
 STA 2+850 TO 3+400 LT

REMOVING SIGNS
 AS SHOWN - 6

ERECTING SALVAGED SIGNS
 AS SHOWN - 1

MANUFACTURED TERMINAL SECTION (FLARED)
 STA 3+403 TO 3+411 LT

REMOVE & DISPOSE GUARDRAIL
 STA 3+403 TO 3+411 LT



09/19/06

07/21/06

05/22/06

- LEGEND**
- R = REMOVE EXISTING
 - S = SALVAGE
 - R&S = REMOVE AND SALVAGE
 - N = NEW
 - RET = RETAIN
 - B-B = BACK TO BACK
 - = NEW RAIL
 - = EXISTING RAIL
 - ⊗ = BORING LOCATION

NOTE: ALL DIMENSIONS IN METERS EXCEPT AS INDICATED

PAVING PROJECT LAYOUT #2

PROJECT: HARTFORD - ROYALTON	PROJECT NO.: STP 212(1)S
DESIGN FILE NAME: /pave/98cl74/pcl74.dgn	PLOT DATE: 21-MAR-2007
IPARM FILE NAME: pcl74i02.i	SURVEY DATE: 8/99
SURVEYED BY: CLD ENGINEERS INC	DRAWN BY: REB
SQUAD LEADER: WRH	SHEET: 12 OF 64

DATUM	
VERTICAL	N/A
HORIZONTAL	N/A

NOT TO SCALE