

TEMPORARY & DURABLE 100 mm WHITE LINE (MOD. I)
 STA. 7+600.0 TO 8+020.0, SOLID LT. & RT.

TEMPORARY & DURABLE 100 mm YELLOW LINE (MOD. I)
 STA. 7+600.0 TO 7+692.7, DASHED LT./ SOLID RT.
 STA. 7+692.7 TO 8+020.0, SOLID LT. & RT.

TEMPORARY & DURABLE RAILROAD CROSSING SYMBOL (MOD. I)
 STA. 7+600.0, RT - |
 STA. 7+950.0, LT. - |

REMOVING SIGNS
 AS SHOWN - 1

REMOVAL AND DISPOSAL OF GUARD RAIL
 STA. 7+764.6 TO 7+776.0, LT.
 STA. 7+796.2 TO 7+800.0, RT.
 STA. 7+800.0 TO 7+807.6, LT.

STEEL BEAM GUARD RAIL
 STA. 7+796.2 TO 7+800.0, RT.
 STA. 7+800.0 TO 7+807.6, LT.

ANCHOR FOR STEEL BEAM RAIL
 STA. 7+796.2, RT.
 STA. 7+803.8, LT. (2)

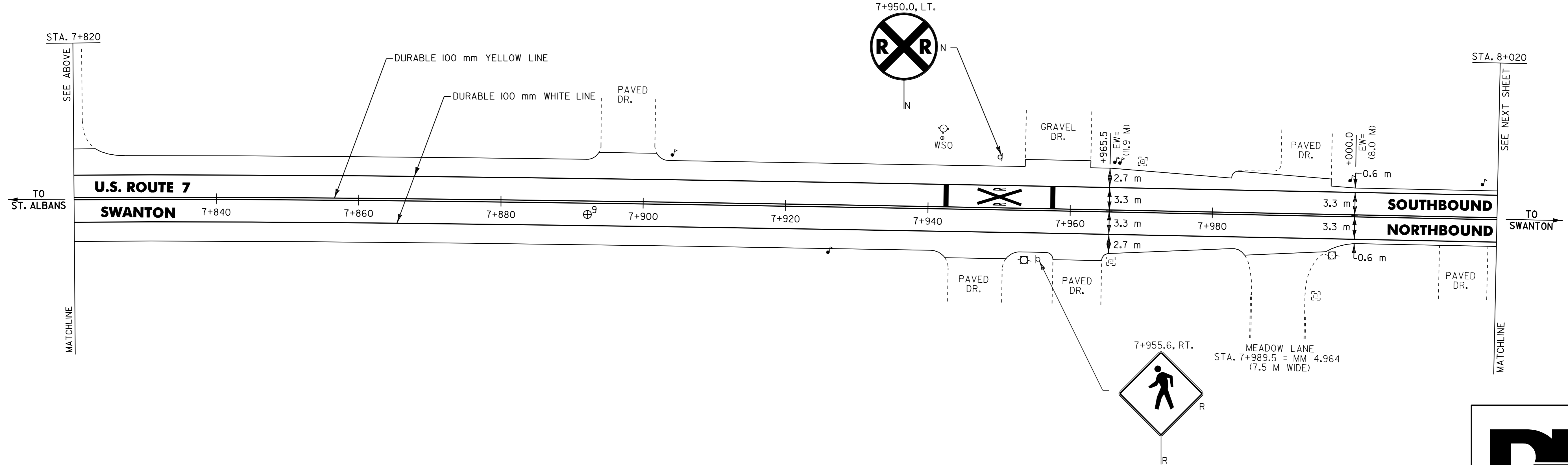
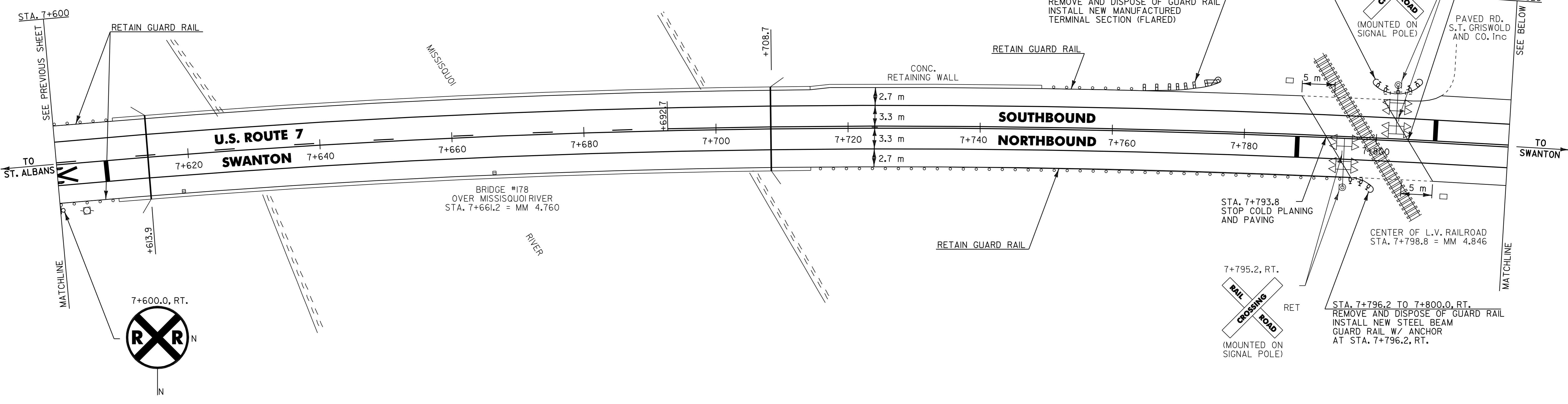
MANUFACTURED TERMINAL SECTION (FLARED)
 STA. 7+764.6 TO 7+776.0, LT.

STA. 7+800.0 TO 7+807.6, LT.
 REMOVE AND DISPOSE OF GUARD RAIL
 INSTALL NEW STEEL BEAM
 GUARD RAIL W/ ANCHORS
 AT STA. 7+803.8, LT.

STA. 7+764.6 TO 7+776.0, LT.
 REMOVE AND DISPOSE OF GUARD RAIL
 INSTALL NEW MANUFACTURED
 TERMINAL SECTION (FLARED)

7+803.4, LT.
 ROAD
 RET
 (MOUNTED ON SIGNAL POLE)

STA. 7+804.8
 RESUME COLD
 PLANING AND
 PAVING
 STA. 7+820
 PAVED RD.
 S.T. GRISWOLD
 AND CO. Inc
 SEE BELOW



- NOTES: 1) ALL DIMENSIONS IN MILLIMETERS EXCEPT WHERE OTHERWISE INDICATED.
 2) ALL EXISTING SIGNS NOT SHOWN SHALL BE RETAINED AS DIRECTED BY THE RESIDENT ENGINEER.
 3) FOR ANY TOWN HIGHWAY OR STREET DETAILS, SEE VTRANS STANDARDS E-12IM & E-193M.
 4) EW = EXISTING ROADWAY WIDTH.

⊕ CORE LOCATION

PAVEMENT CORE DATA			
CORE #	LOCATION	DEPTH (mm)	PCC
9	7+892.2, RT.	191	NO

LAYOUT SHEET #28

PROJECT NAME: ST. ALBANS - SWANTON
 PROJECT NUMBER: STP 2335(I)S
 FILE NAME: /pave/01c016/p01c016.dgn
 PROJECT LEADER: JLL
 DESIGNED BY: D-H
 IPARM FILE NAME: p01c016i28.1

PLOT DATE: 16-SEP-2005
 DRAWN BY: D-H
 CHECKED BY: D-H
 SHEET 84 OF 89

