

TEMPORARY & DURABLE 100 mm WHITE LINE
 STA. 1+881.32 TO 2+220.0, SOLID LT. & RT.
 (WITH EDGELINE BREAK FOR SEYMOUR RD.)
 STA. 2+143.6, DOUBLE SOLID RT.
 (SEYMOUR RD. EDGELINES)

TEMPORARY & DURABLE 100 mm YELLOW LINE
 STA. 1+881.32 TO 2+220.0, SOLID LT. & RT.
 (WITH CENTERLINE BREAK FOR SEYMOUR RD.)
 STA. 2+143.6, DOUBLE SOLID RT.
 (SEYMOUR RD. CENTERLINE)

TEMPORARY & DURABLE 600 mm STOP BAR
 STA. 2+143.6, RT.
 (SEYMOUR RD.)

TEMPORARY & DURABLE LETTER OR SYMBOL
 STA. 2+143.6, RT. - **STOP**

ERECTING SALVAGED SIGNS
 AS SHOWN - 3

REMOVING SIGNS
 AS SHOWN - 4



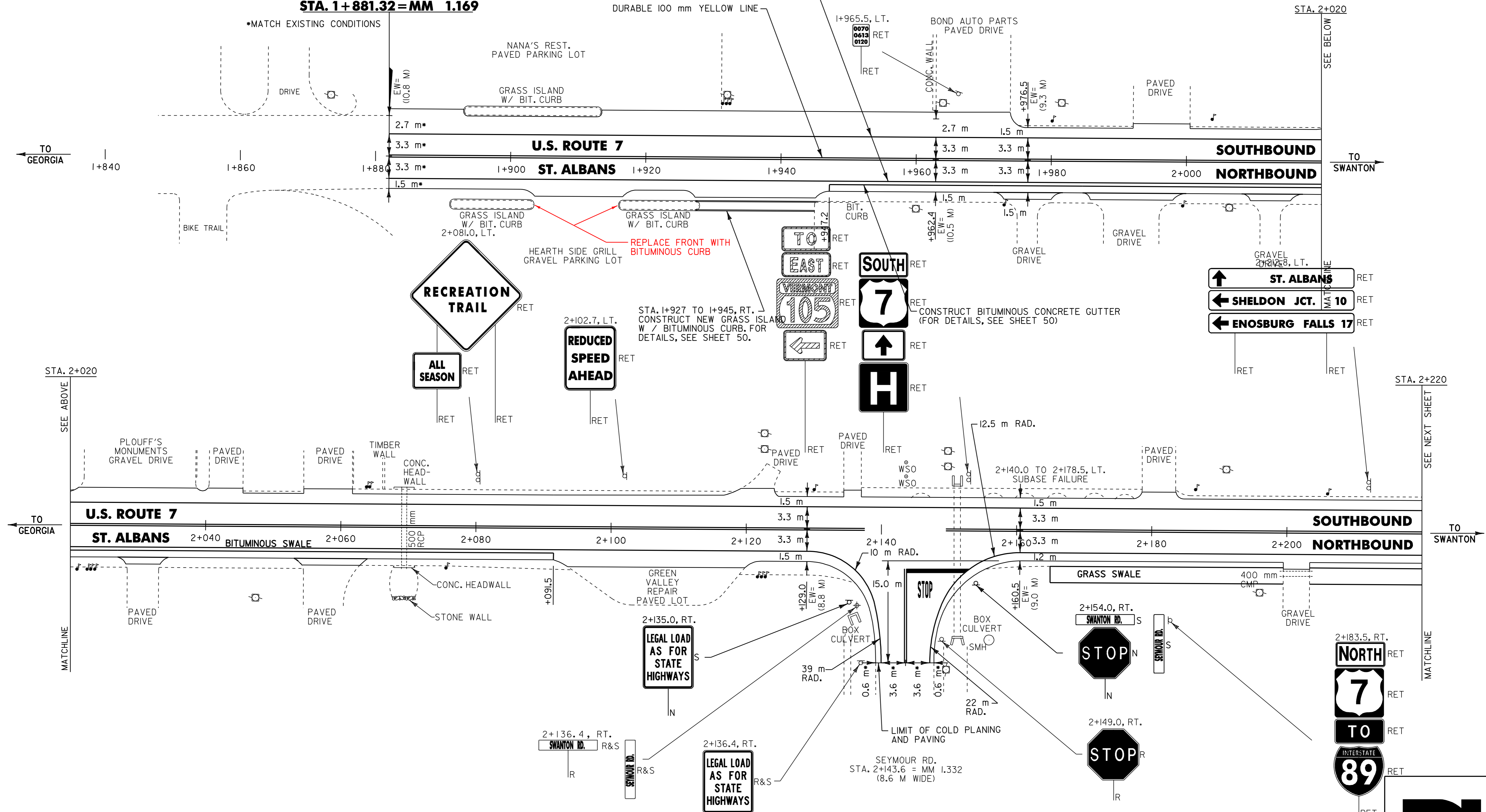
DITCH CLEANING
 STA. 2+165.0 TO 2+220.0, RT. (SITE 2)
 (FOR DETAILS, SEE SHEET 52)

BITUMINOUS CONCRETE CURB, TYPE B
 STA. 1+927.0 TO 1+945.0, RT.
 (FOR DETAILS, SEE SHEET 50)

REMOVAL OF EXISTING CURB
 STA. 1+927.0, RT.

BITUMINOUS CONCRETE GUTTERS AND TRAFFIC ISLANDS
 STA. 1+947.2 TO 2+091.5, RT.
 (FOR DETAIL, SEE SHEET 50)

BEGIN STP 2335(1)S
U.S. ROUTE 7
ST. ALBANS TOWN
STA. 1+881.32 = MM 1.169



NOTES: 1) ALL DIMENSIONS IN MILLIMETERS EXCEPT WHERE OTHERWISE INDICATED.

2) ALL EXISTING SIGNS NOT SHOWN SHALL BE RETAINED AS DIRECTED BY THE RESIDENT ENGINEER.

3) FOR ANY TOWN HIGHWAY OR STREET DETAILS, SEE VTRANS STANDARDS E-121M & E-193M.

4) EW = EXISTING ROADWAY WIDTH.

LAYOUT SHEET #1

PROJECT NAME:	ST. ALBANS - SWANTON	FILE NAME:	/pave/01c016/p01c016.dgn	PLOT DATE:	16-SEP-2005 13:19
PROJECT NUMBER:	STP_2335(1)S	PROJECT LEADER:	JLL	DRAWN BY:	Q:H
		DESIGNED BY:	Q:H	CHECKED BY:	Q:H
		IPARM FILE NAME:	p01c016i01.i	SHEET	_57_ OF _89_

