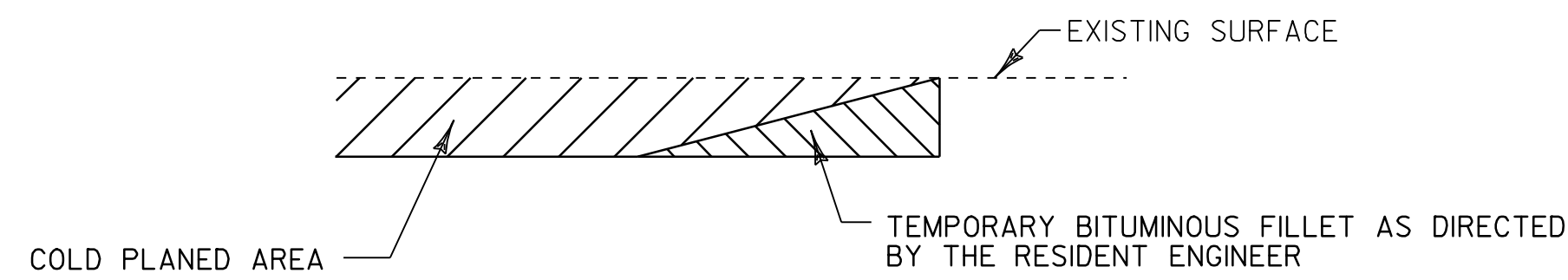
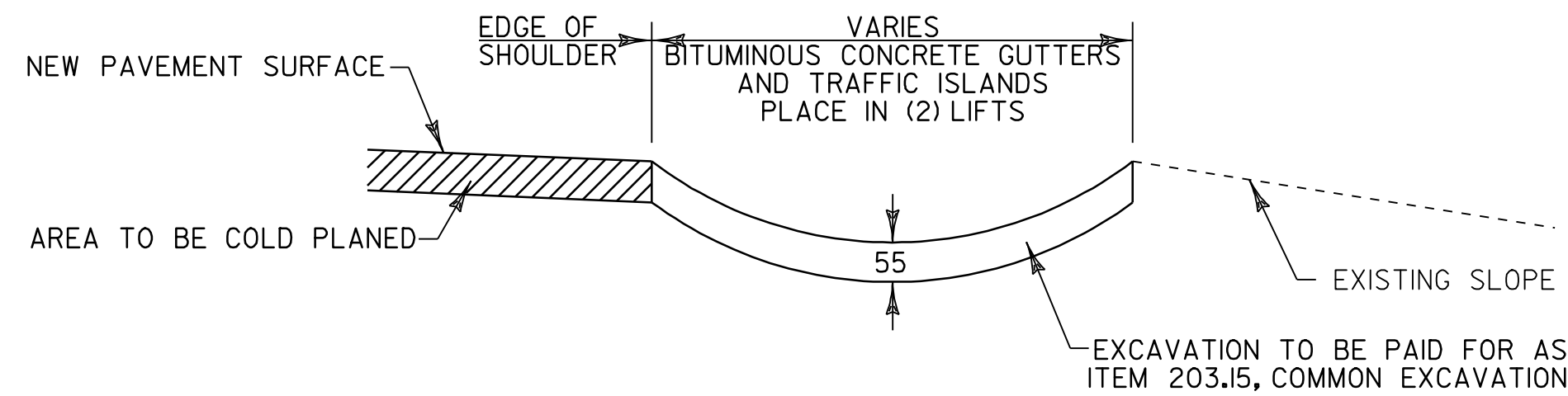


**ASPHALTIC PLUG JOINT DETAIL**

SWANTON BRIDGE #178 - STA. 7+613.9  
 SWANTON BRIDGE #178 - STA. 7+708.7

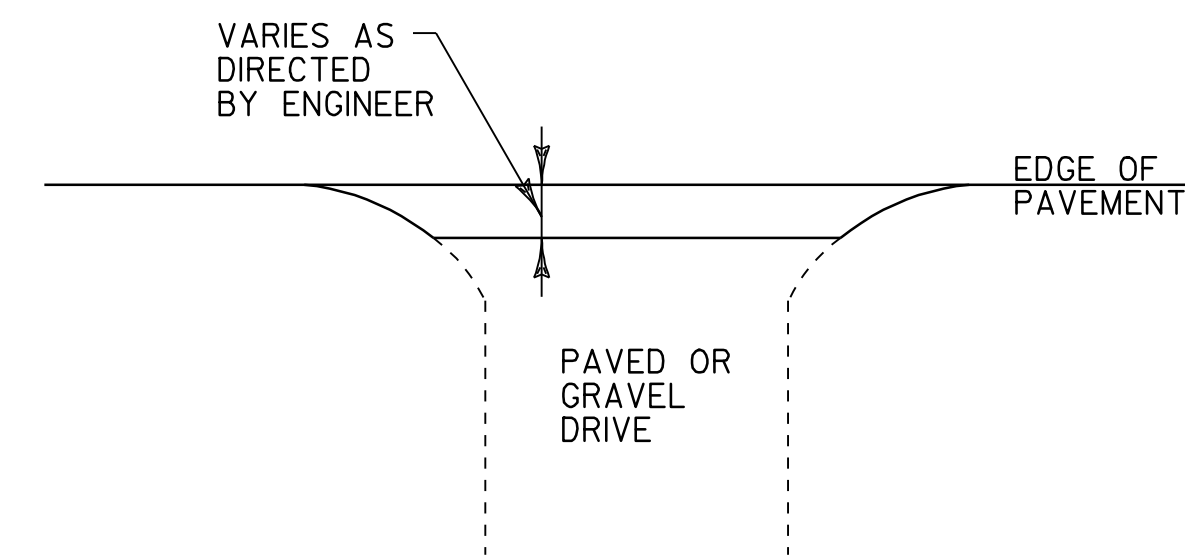


**DETAIL AT VERTICAL COLD PLANE JOINTS**

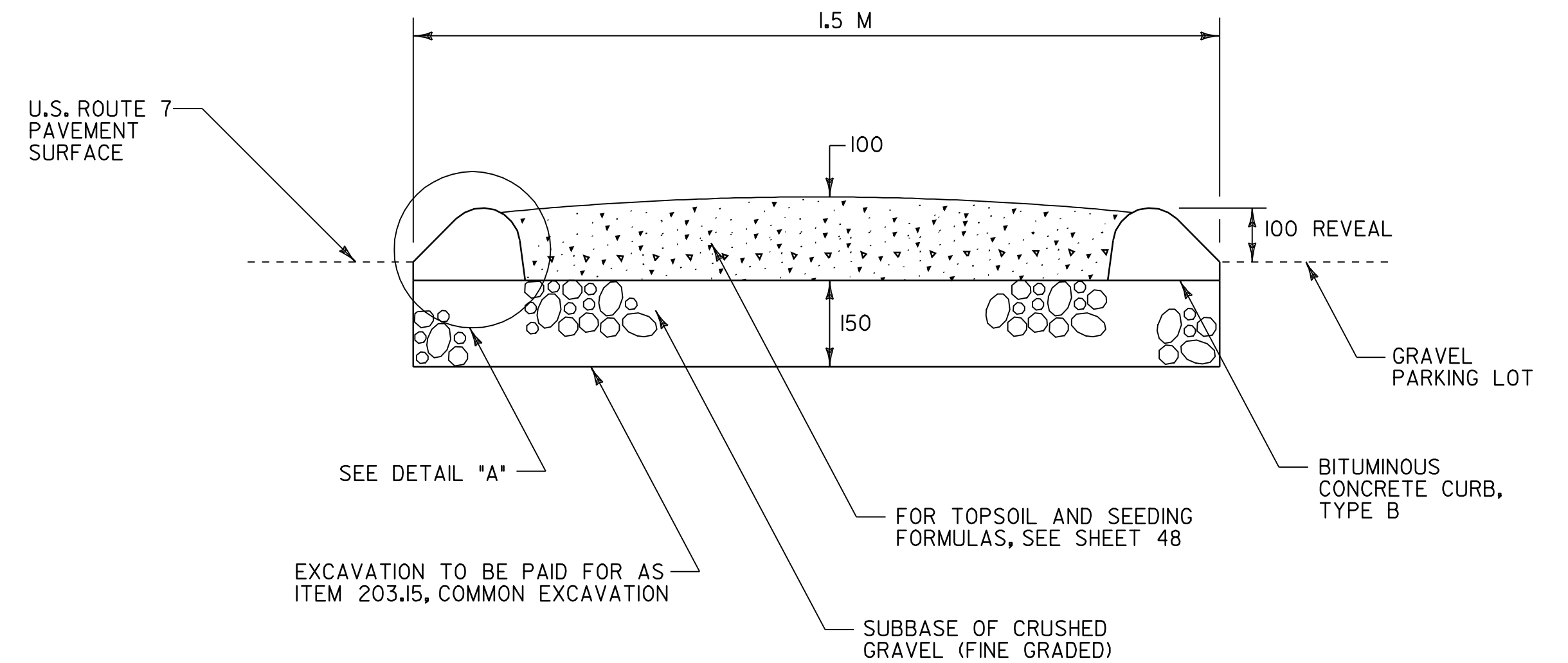


**BITUMINOUS CONCRETE GUTTER DETAIL**

ST. ALBANS TOWN STA. 1+947.2 TO 2+091.5, RT. (1.0 m WIDE)  
 ST. ALBANS TOWN STA. 2+640.0 TO 2+803.0, RT. (3.0 m WIDE)  
 ST. ALBANS TOWN STA. 4+171.0 TO 4+240.0, RT. (1.0 m WIDE)

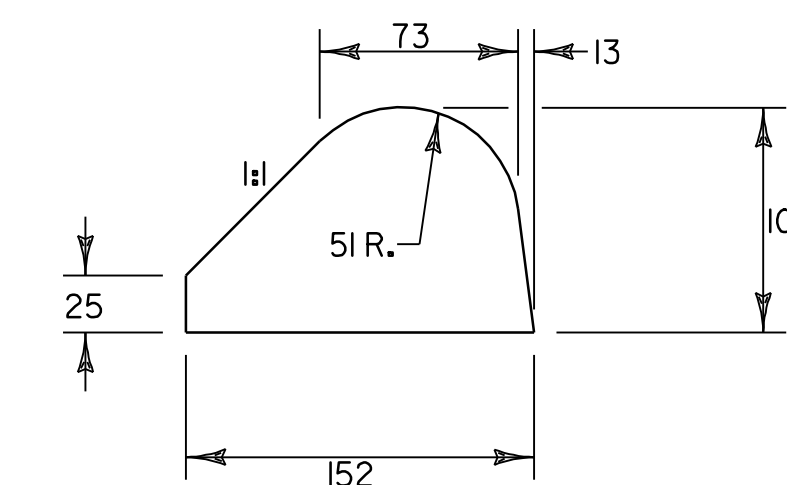


**PAVING LIMITS FOR DRIVES**



**ISLAND DETAIL**

ST. ALBANS TOWN STA. 1+927.0 TO 1+945.0, RT.



**DETAIL "A"**

**PAVEMENT & ISLAND DETAILS**

PROJECT NAME: ST. ALBANS - SWANTON  
 PROJECT NUMBER: STP 2335(1)S  
 FILE NAME: /pave/01c016/p01c016.dgn  
 PROJECT LEADER: JLL  
 DESIGNED BY: D-H  
 IPARM FILE NAME: pc016pd+02.1  
 PLOT DATE: 16-SEP-2005  
 DRAWN BY: D-H  
 CHECKED BY:  
 SHEET 50 OF 89

NOTE: 1) ALL DIMENSIONS IN MILLIMETERS EXCEPT WHERE OTHERWISE INDICATED.

