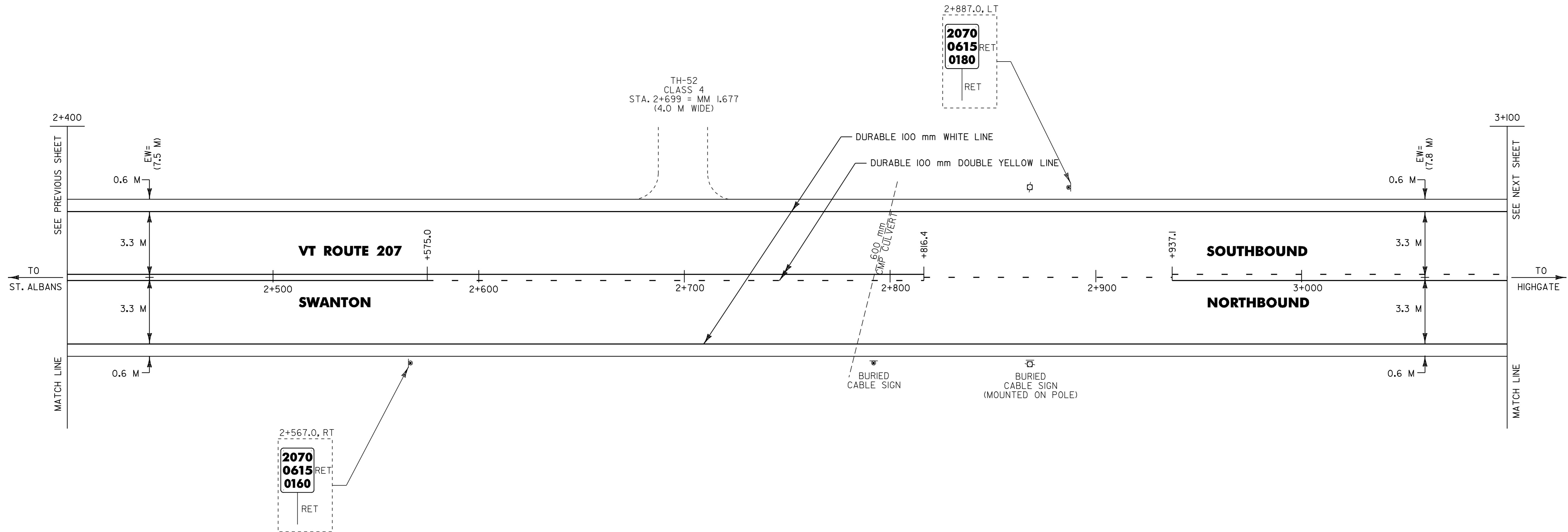


TEMPORARY AND DURABLE 100 mm WHITE LINE
 STA. 2+400.0 TO 3+100.0, SOLID LT. & RT.

TEMPORARY AND DURABLE 100 mm YELLOW LINE
 STA. 2+400.0 TO 2+575.0, SOLID LT. & RT.
 STA. 2+575.0 TO 2+816.4, SOLID LT. / DASHED RT.
 STA. 2+816.4 TO 2+937.1, DASHED CL
 STA. 2+937.1 TO 3+100.0, DASHED LT. / SOLID RT.

DITCH CLEANING
 STA. 2+400.0 TO 2+575.0, LT.
 (FOR DETAILS SEE SHEET 11)



- NOTES: 1) ALL DIMENSIONS IN MILLIMETERS EXCEPT WHERE OTHERWISE INDICATED.
 2) ALL EXISTING SIGNS NOT SHOWN SHALL BE RETAINED AS DIRECTED BY THE RESIDENT ENGINEER.
 3) FOR ANY TOWN HIGHWAY OR STREET DETAILS, SEE VTrans STANDARD E-193M.
 4) FOR ALL PAVEMENT MARKING DETAILS, SEE VTrans STANDARDS E-191M & E-192M
 5) EW= EXISTING ROADWAY WIDTH



PROJECT LAYOUT #11	PROJECT NAME: ST. ALBANS-HIGHGATE	FILE NAME: /pave/98cll0/pcll0.dgn	PLOT DATE: 16-SEP-2005 13:51
	PROJECT NUMBER: STP 2114(1)S	PROJECT LEADER: JLL	DRAWN BY: D-H
		DESIGNED BY: D-H	CHECKED BY: D-H
		IPARM FILE NAME: pcll0pl1.t	SHEET 26 OF 89