

TEMPORARY AND DURABLE 150 mm WHITE LINE  
 STA. 0+006.44 TO 0+120.0, SOLID LT. & RT.  
 (AROUND TRIANGLE INCLUDING APPROACH  
 RAMP EDGELINES)

TEMPORARY AND DURABLE 300 mm WHITE LINE  
 STA. 0+006.44, SOLID LT. (DIAGONALS)  
 STA. 0+006.44 TO 0+120.0, SOLID RT.

TEMPORARY AND DURABLE 150 mm YELLOW LINE  
 STA. 0+006.44 TO 0+120.0, SOLID LT. & RT.  
 (INCLUDING RAMP EDGELINES)

TEMPORARY AND DURABLE 600 mm STOP BAR  
 STA. 0+010.6, LT.  
 STA. 0+022.7, LT.

DURABLE LETTER OR SYMBOL  
 STA. 0+013.2, LT. -   
 STA. 0+025.3, LT. - \*ONLY\*   
 STA. 0+025.6, LT. -   
 STA. 0+037.7, LT. - \*ONLY\*   
 STA. 0+064.2, LT. -   
 STA. 0+064.2, LT. -   
 STA. 0+076.3, LT. - (2) \*ONLY\*   
 STA. 0+114.9, LT. -   
 STA. 0+114.9, LT. -

TEMPORARY LETTER OR SYMBOL  
 STA. 0+013.2, LT. -   
 STA. 0+025.6, LT. -   
 STA. 0+067.4, LT. -   
 STA. 0+067.4, LT. -

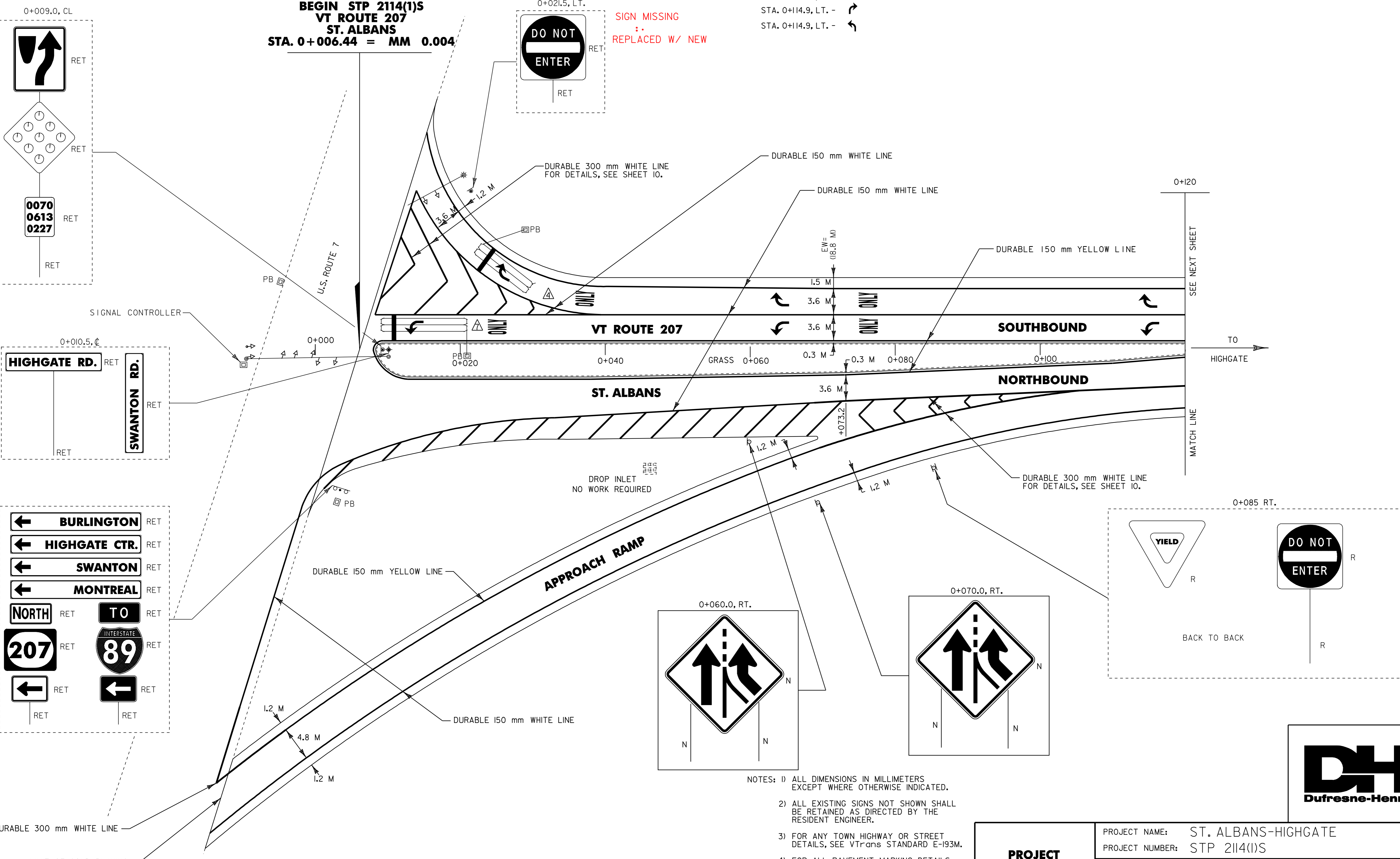
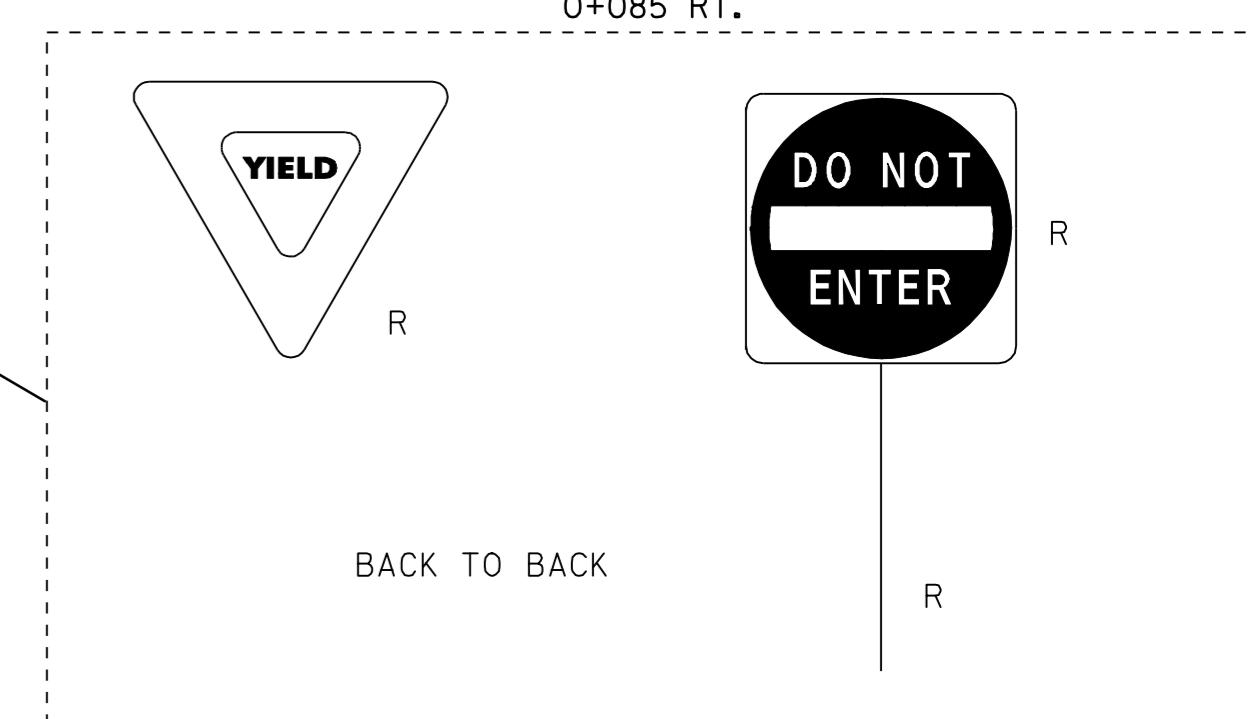
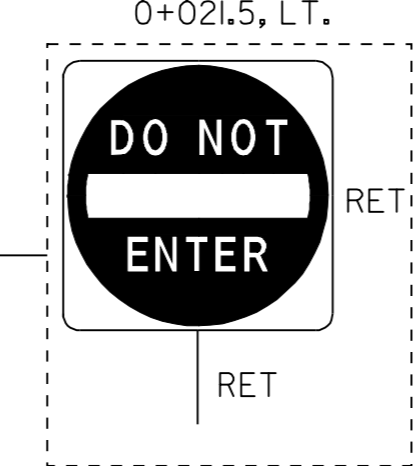
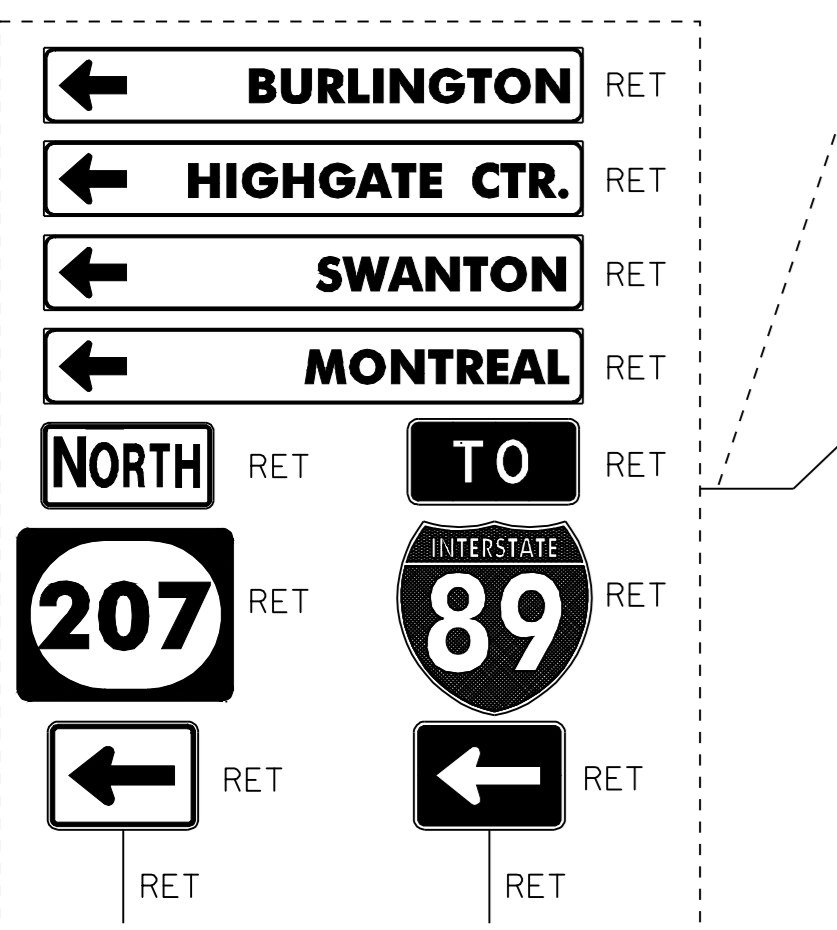
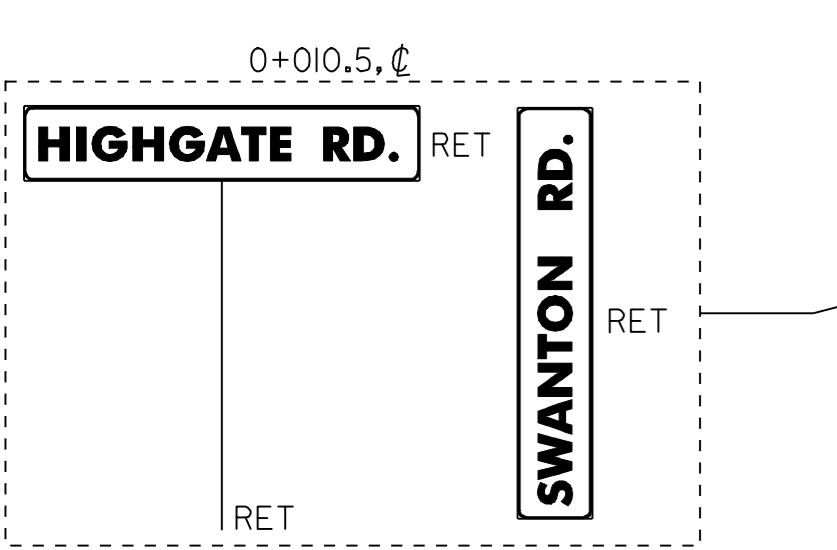
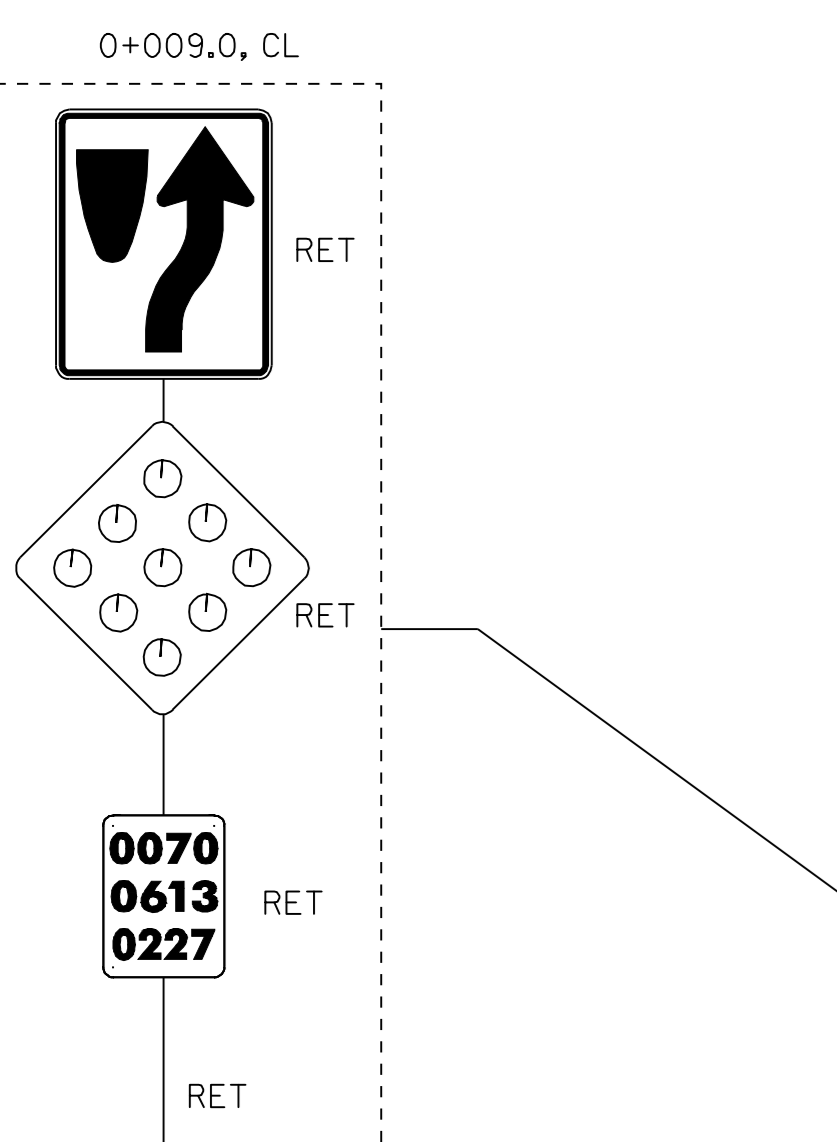
PAINTED CURB  
 STA. 0+008.0 TO 0+017.0, LT.  
 STA. 0+008.0 TO 0+120.0, RT.

REMOVING SIGNS  
 AS SHOWN - 2



**BEGIN STP 2114(1)S  
 VT ROUTE 207  
 ST. ALBANS  
 STA. 0+006.44 = MM 0.004**

SIGN MISSING  
 REPLACED W/ NEW



- NOTES: 1) ALL DIMENSIONS IN MILLIMETERS EXCEPT WHERE OTHERWISE INDICATED.  
 2) ALL EXISTING SIGNS NOT SHOWN SHALL BE RETAINED AS DIRECTED BY THE RESIDENT ENGINEER.  
 3) FOR ANY TOWN HIGHWAY OR STREET DETAILS, SEE VTrans STANDARD E-193M.  
 4) FOR ALL PAVEMENT MARKING DETAILS, SEE VTrans STANDARDS E-191M & E-192M  
 5) EW= EXISTING ROADWAY WIDTH  
 6) LOOP NO. - FOR DETAILS SEE SHEET 10

**PROJECT LAYOUT #1**

PROJECT NAME: ST. ALBANS-HIGHGATE  
 PROJECT NUMBER: STP 2114(1)S  
 FILE NAME: /pave/98c110/pcl10.dgn  
 PROJECT LEADER: JLL  
 DESIGNED BY: D-H  
 IPARM FILE NAME: pcl10p01.i  
 PLOT DATE: 16-SEP-2005 13:4  
 DRAWN BY: D-H  
 CHECKED BY: D-H  
 SHEET 16 OF 89

