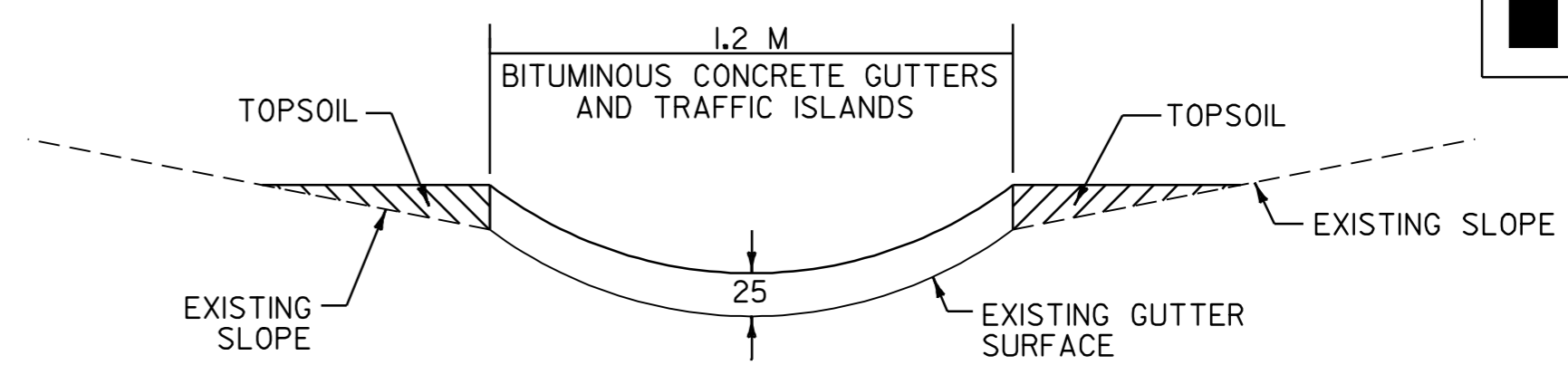


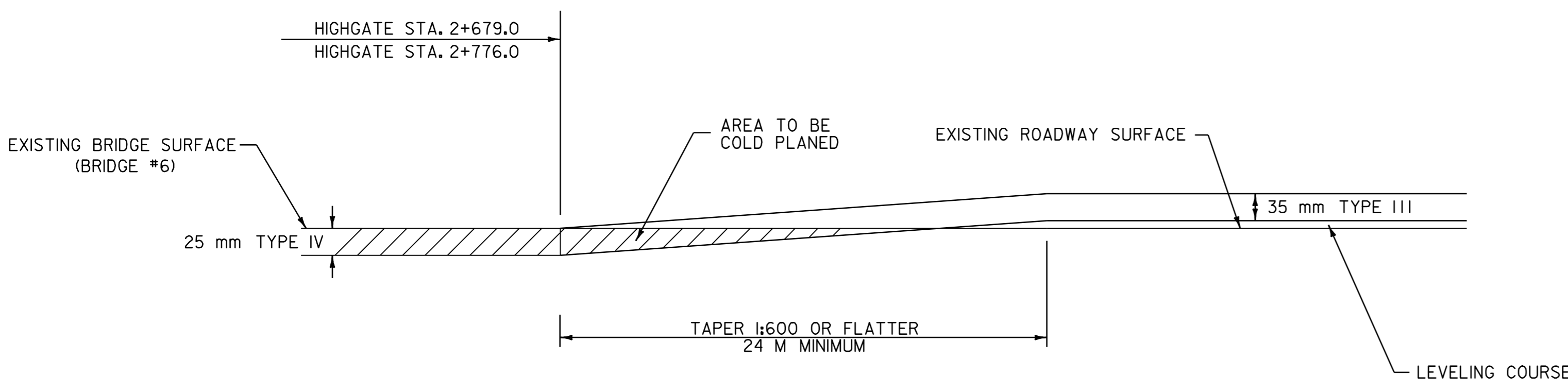
TRANSITION AREA DETAIL #1
FULL ROADWAY WIDTH

(COLD PLANE TO OVERLAY)
SWANTON STA. 0+000.0 TO 0+024.0



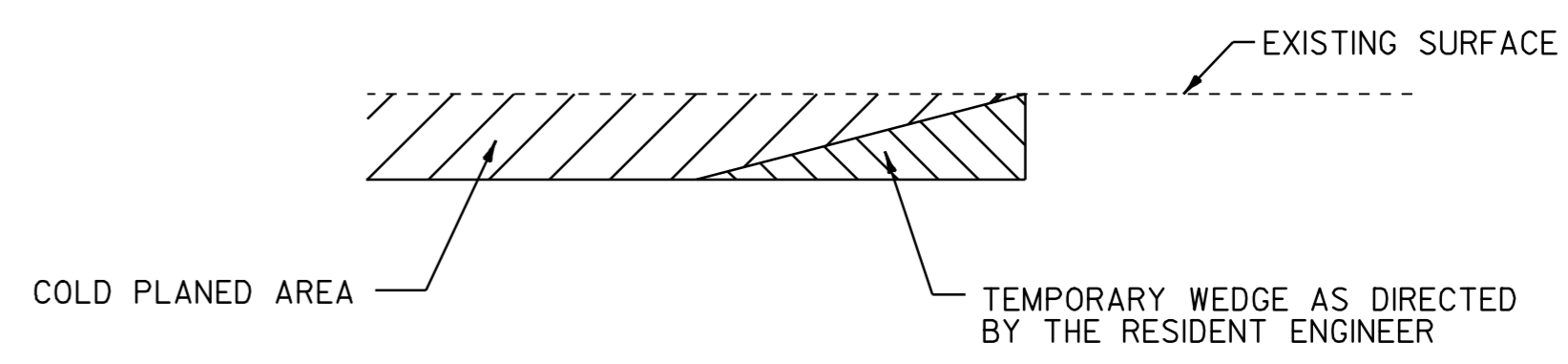
BITUMINOUS CONCRETE GUTTER DETAIL

HIGHGATE STA. 2+513.1 TO 2+536.1, RT.
HIGHGATE STA. 2+529.1 TO 2+563.5, LT.

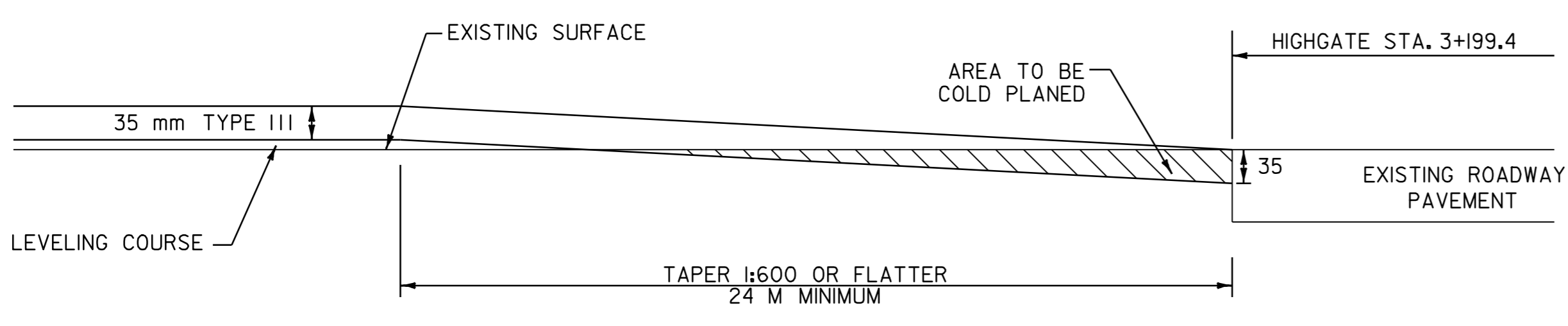


TRANSITION AREA DETAIL #2
FULL ROADWAY WIDTH

(LEVEL AND OVERLAY TO COLD PLANING @ BRIDGE NO. 6)
HIGHGATE STA. 2+655.0 TO STA. 2+679.0
HIGHGATE STA. 2+776.0 TO STA. 2+800.0

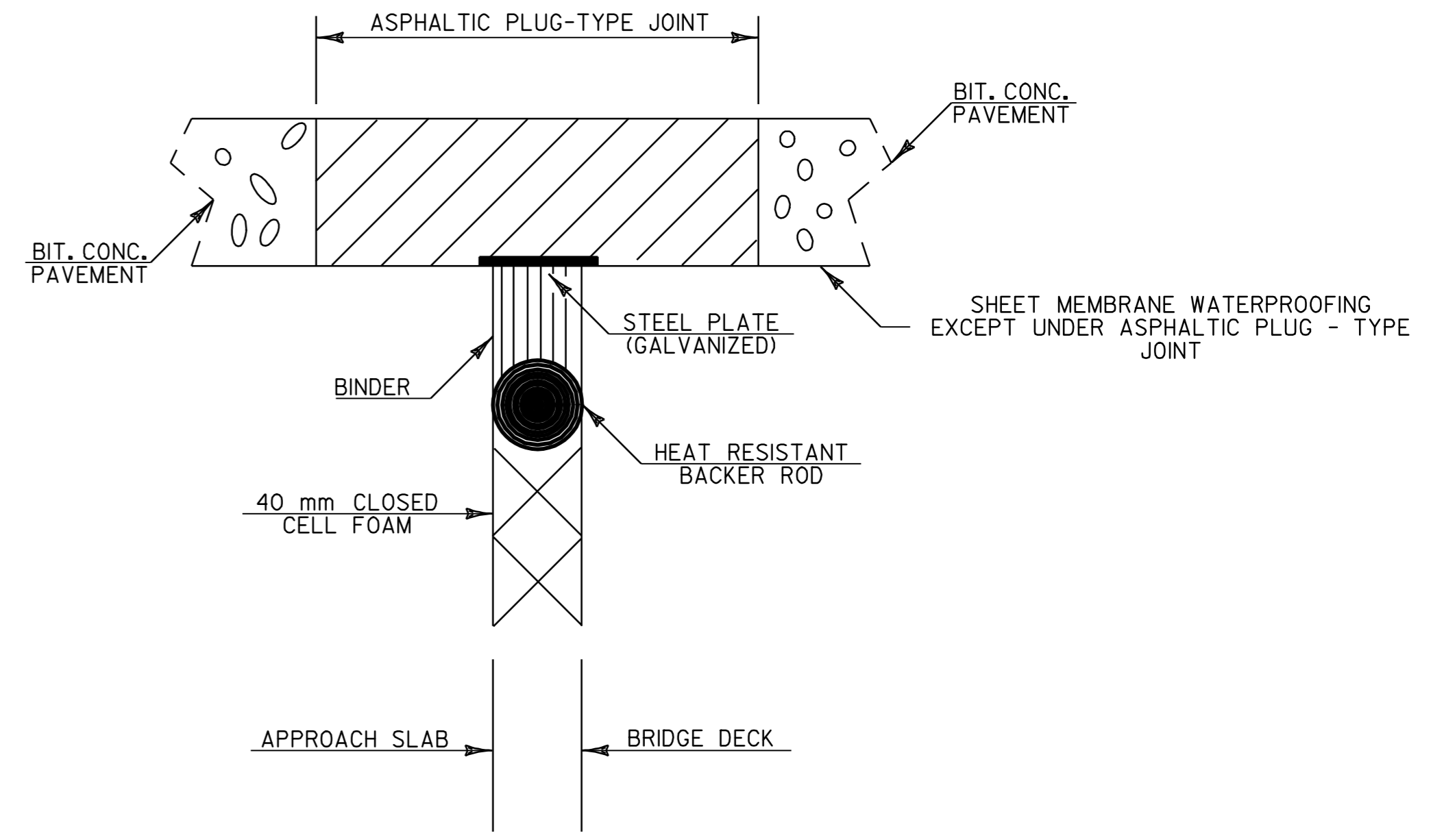


DETAIL AT VERTICAL COLD PLANE JOINTS



APPROACH AREA DETAIL - VT ROUTE 207
FULL ROADWAY WIDTH

(END LEVEL AND OVERLAY)
HIGHGATE STA. 3+175.4 TO 3+199.38

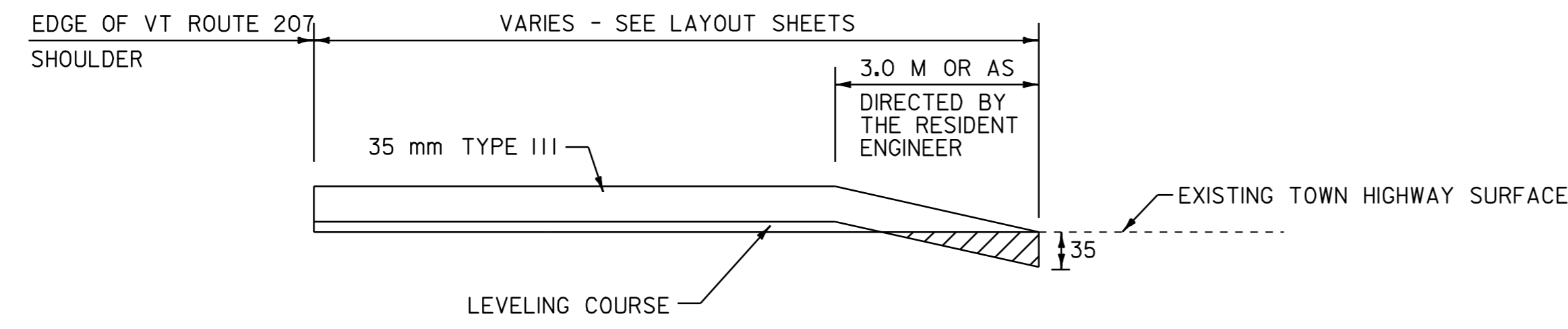


ASPHALTIC PLUG JOINT DETAIL

* REFER TO SPECIAL PROVISIONS FOR BASIS OF PAYMENT

NOT TO SCALE

BRIDGE NO. 6 HIGHGATE STA. 2+679 (10.2 m)
BRIDGE NO. 6 HIGHGATE STA. 2+776 (10.2m)



APPROACH AREA DETAIL - TOWN HIGHWAYS (LEVEL & OVERLAY AREA)
FULL WIDTH OF TOWN HIGHWAY

THIS DETAIL WILL BE FOLLOWED FOR TOWN HIGHWAYS IN OVERLAY AREAS AS DESIGNATED BY THE RESIDENT ENGINEER

NOTE: ALL DIMENSIONS IN MILLIMETERS EXCEPT WHERE OTHERWISE INDICATED

TRANSITION AREA DETAILS	PROJECT NAME: ST. ALBANS - HIGHGATE	PLOT DATE: 16-SEP-2005 13:33
	PROJECT NUMBER: STP 2114(1)S	DRAWN BY: D-H
	FILE NAME: /pave/98c110/pcl10.dgn	DESIGNED BY: D-H
	IPARM FILE NAME: pcl10ty2.i	CHECKED BY:
		SHEET 8 OF 89

