

TEMPORARY AND DURABLE 100 MM YELLOW LINE

STA 16+600 TO 16+849 SOLID LT & RT

TEMPORARY AND DURABLE 100 MM WHITE LINE

STA 16+600 TO 16+852 SOLID LT & RT

STA 16+814 TO 16+849 SOLID RT-LANE LINE

DURABLE LETTER OR SYMBOL

STA 16+701 RT "STOP"
 STA 16+713 RT "AHEAD"
 STA 16+819 RT "LEFT TURN ARROW"
 STA 16+819 RT "RIGHT TURN ARROW"
 STA 16+832 RT "ONLY"
 STA 16+832 RT "ONLY"
 STA 16+845 RT "LEFT TURN ARROW"
 STA 16+845 RT "RIGHT TURN ARROW"
 STA 16+847 RT "STOP"
 STA 16+847 RT "STOP"

TEMPORARY LETTER OR SYMBOL

STA 16+701 RT "STOP"
 STA 16+713 RT "AHEAD"
 STA 16+819 RT "LEFT TURN ARROW"
 STA 16+819 RT "RIGHT TURN ARROW"
 STA 16+845 RT "LEFT TURN ARROW"
 STA 16+845 RT "RIGHT TURN ARROW"
 STA 16+847 RT "STOP"
 STA 16+847 RT "STOP"

TEMPORARY AND DURABLE 600 MM STOP BAR

STA 16+849 RT

CHANGING ELEV. OF DI, CB OR MH
 REHABILITATION OF DI, CB OR MH CLASS I

~~STA 16+800 RT~~
 STA 16+879 LT

REMOVING SIGNS

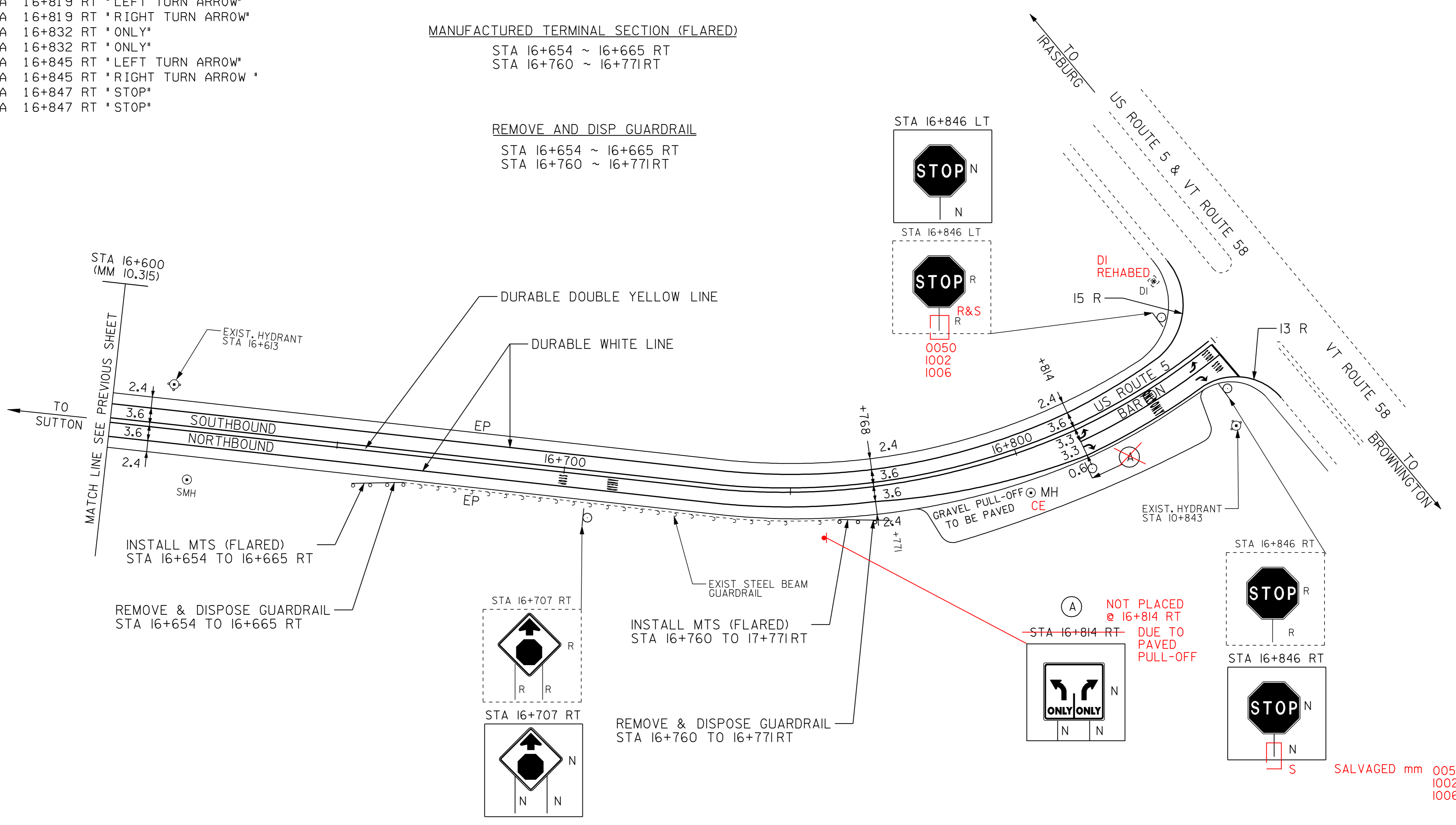
AS SHOWN - 3-4

MANUFACTURED TERMINAL SECTION (FLARED)

STA 16+654 ~ 16+665 RT
 STA 16+760 ~ 16+771 RT

REMOVE AND DISP GUARDRAIL

STA 16+654 ~ 16+665 RT
 STA 16+760 ~ 16+771 RT



LEGEND

- R = REMOVE EXISTING
- S = SALVAGE
- R&S = REMOVE AND SALVAGE
- N = NEW
- RET = RETAIN
- B-B = BACK TO BACK
- = NEW RAIL
- ⊙ = EXISTING RAIL
- ⊗ = BORING LOCATION

NOTE: ALL DIMENSIONS IN METERS EXCEPT AS INDICATED

DATUM	
VERTICAL	N/A
HORIZONTAL	N/A

NOT TO SCALE

PAVING PROJECT LAYOUT #14

PROJECT:	BARTON-IRASBURG	PROJECT NO.:	STP 2107(I)S
DESIGN FILE NAME:	pave/98c096/pc096.dgn	PLOT DATE:	21-MAY-2007
IPARM FILE NAME:	pc096i14.i	SURVEY DATE:	6/99
SURVEYED BY:	CLD_ENGINEERS_INC	DRAWN BY:	NLL
SQUAD LEADER:	WRH	SHEET:	25 OF 49