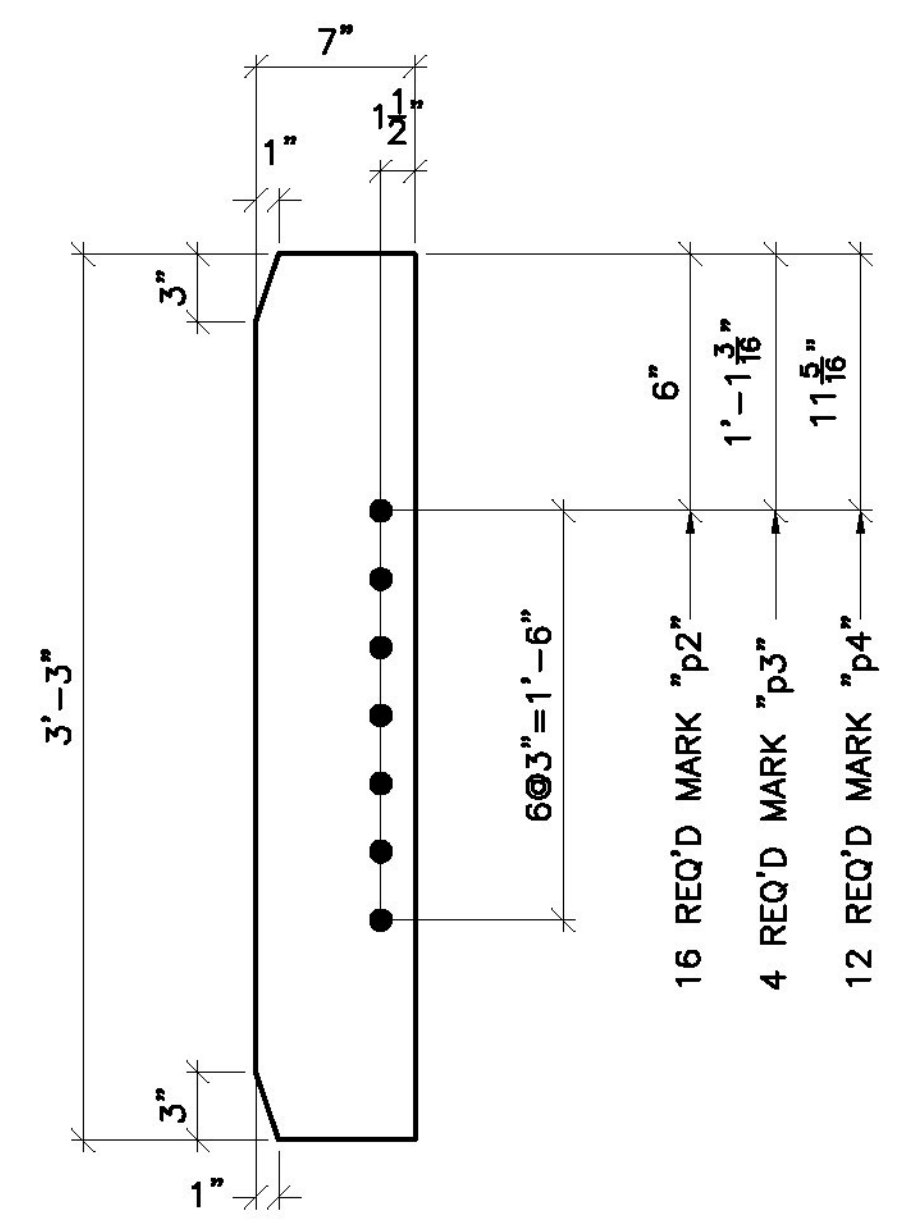
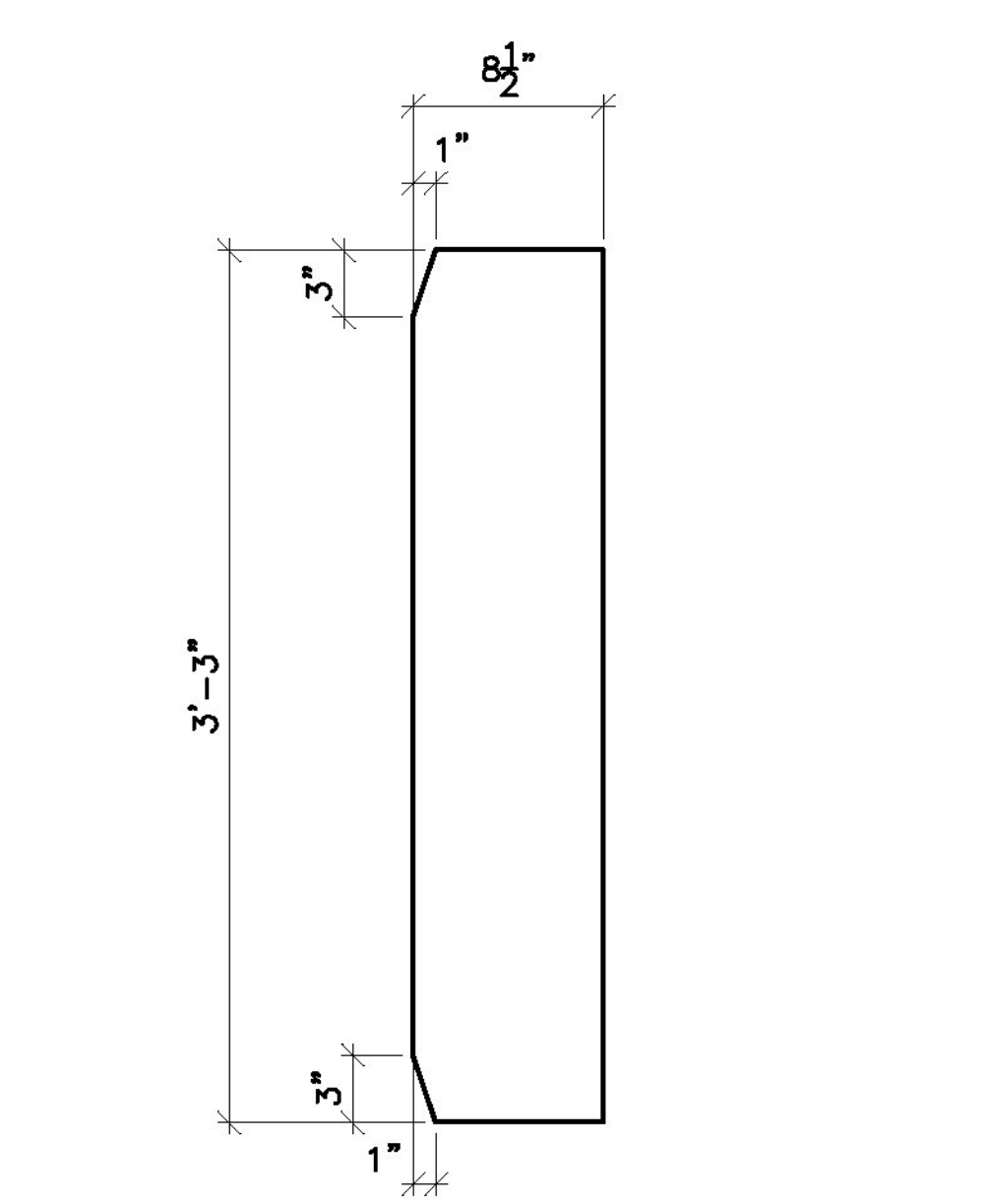


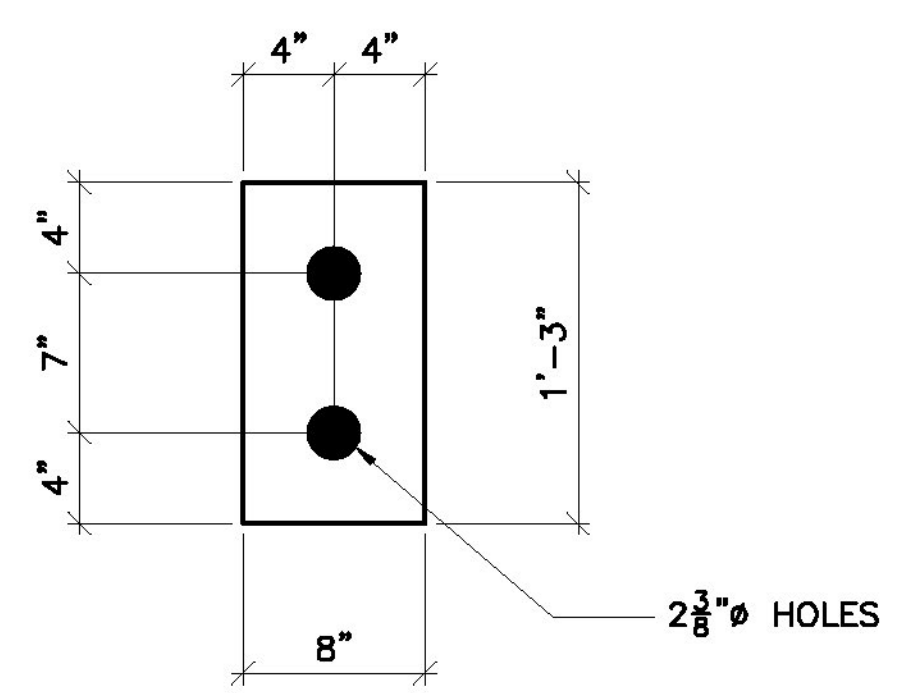
SHOW DRIP PLATE DETAIL.



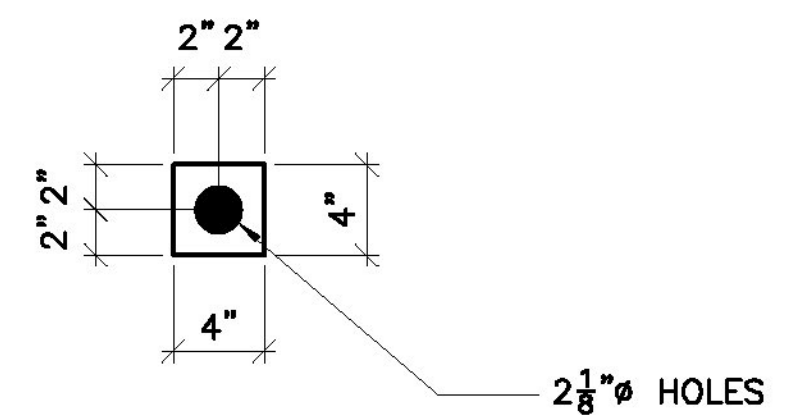
32 REQ'D, 1/2" CONN. PL



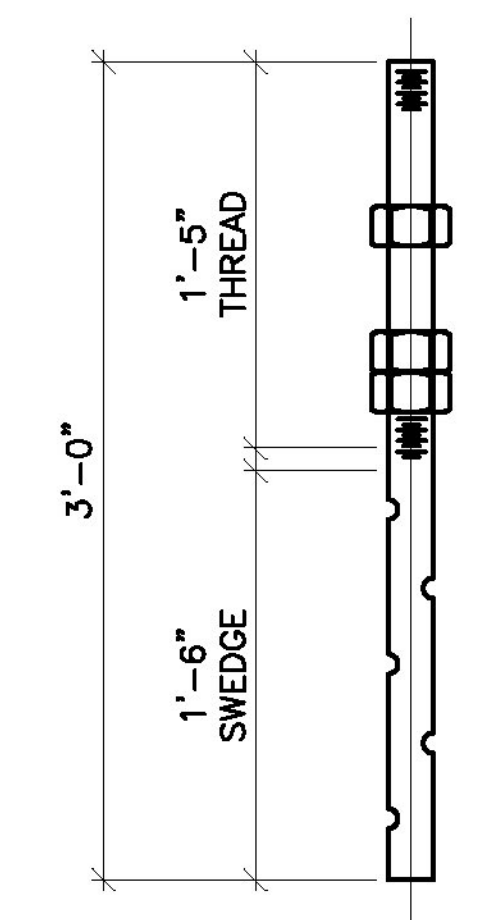
20 REQ'D, 7/8" STIFF. PL, MARK "p1"



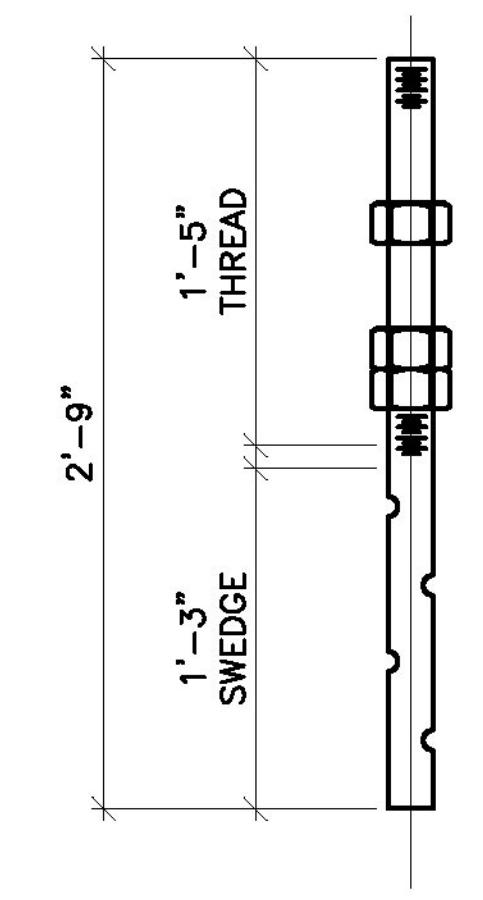
10 REQ'D, 1 3/8" LEVELING PL, MARK "LP1"



40 REQ'D, 1/2" WASHERS, MARK "W1"



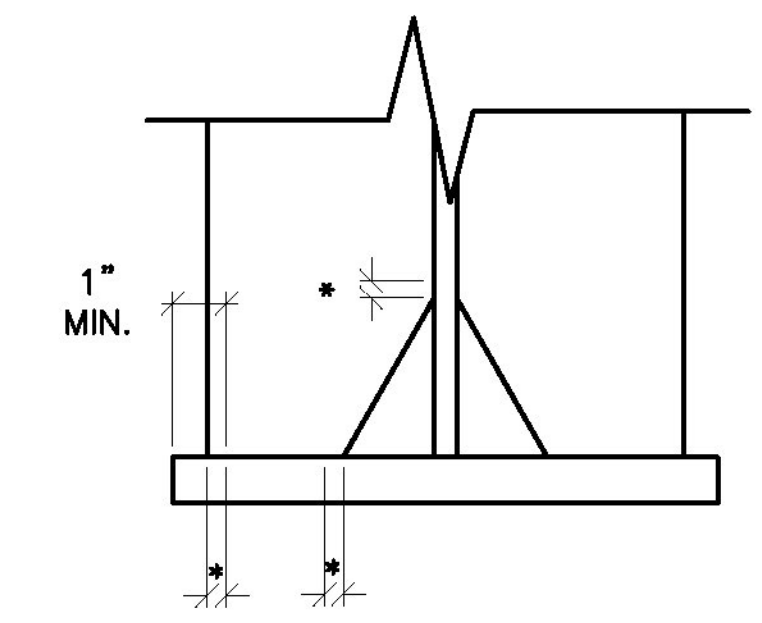
18 REQ'D, 2" Ø ANCHOR BOLT, MARK "AB2"
W/(3) NUTS EA.



2 REQ'D, 2" Ø ANCHOR BOLT, MARK "AB1"
W/(3) NUTS EA.

BILL OF MATERIAL

SHIP	SHIP MARK	NO. PCS.	PIECE MARK	DESCRIPTION	LENGTH	REMARKS	WT.
	1D1	16		W24X84	6'-7 1/2"		8904
	LP1	10		PL 1 3/8 X 8	1'-3"		488
	W1	40		PL 1/2 X 4	0'-4"		91
	AB1	2		2" SWEDGED ANCHOR	2'-9"	GR. 50	59
				W/(3) NUTS EA.			
	AB2	18		2" SWEDGED ANCHOR	3'-0"	GR. 50	577
				W/(3) NUTS EA.			
		20	p1	PL 7/8 X 8 1/2	3'-3"		1830
		16	p2	PL 1/2 X 7	3'-3"		613
		4	p3	PL 1/2 X 7	3'-3"		153
		12	p4	PL 1/2 X 7	3'-3"		480
				FIELD BOLTS			
	FB3	224		3/4" Ø BOLTS	0'-2 1/2"	W/N&W	



WELD TERMINATION DETAIL
* NO WELD FOR 3/8" MIN. 7/8" MAX.

Vermont Agency of Transportation
RECEIVED
CK'D BY D. PETERSON OK'D BY C. CARLSON
08/20/2012
RESUBMIT _____ APPROVED AS NOTED
BY C. CARLSON DATE 12/14/2012

FINISH		NO		DATE		DESCRIPTION		BY	
MATERIAL	ASTM A709 GRADE 50								
HOLES	15/16" U.O.M.								
ELECTRODES									
WELDS	PER WPS								
SURFACE PREP									
		NO		DATE		DESCRIPTION		BY	
REVISIONS									
		ADVANCED RESOURCES & CONST. ENTERPRISES, INCORPORATED							
		P.O. BOX 120 KINGFIELD, ME. 04947 PHONE: (207) 265-2646 - FAX: (207) 265-4054							
DRAFTER	JAC	MISC. DETAILS						CONTRACT NO.	
DATE	11/13/12	STATE OF VERMONT, TOWN OF JOHNSBURY, BRIDGE NO. 108						BRF 028-4(25)S	
CHECKED	MTD	COUNTY OF CALEDONIA, US ROUTE 2 - PRINCIPAL ARTERIAL						DWG. NO.	
JOB #	12-175	CUSTOMER: WINTERSET, INC.						6	