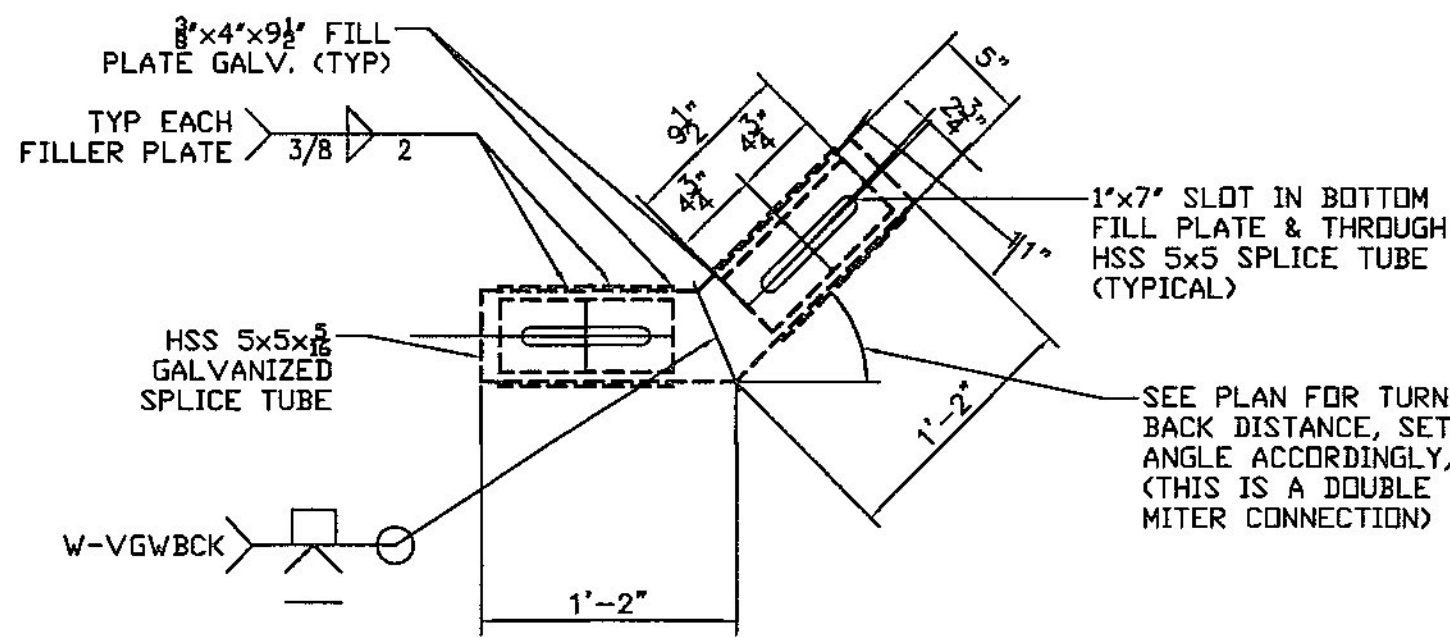
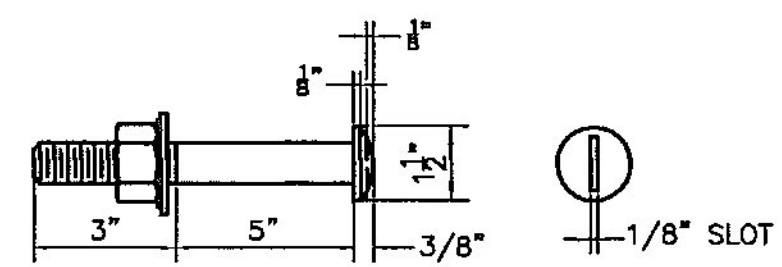


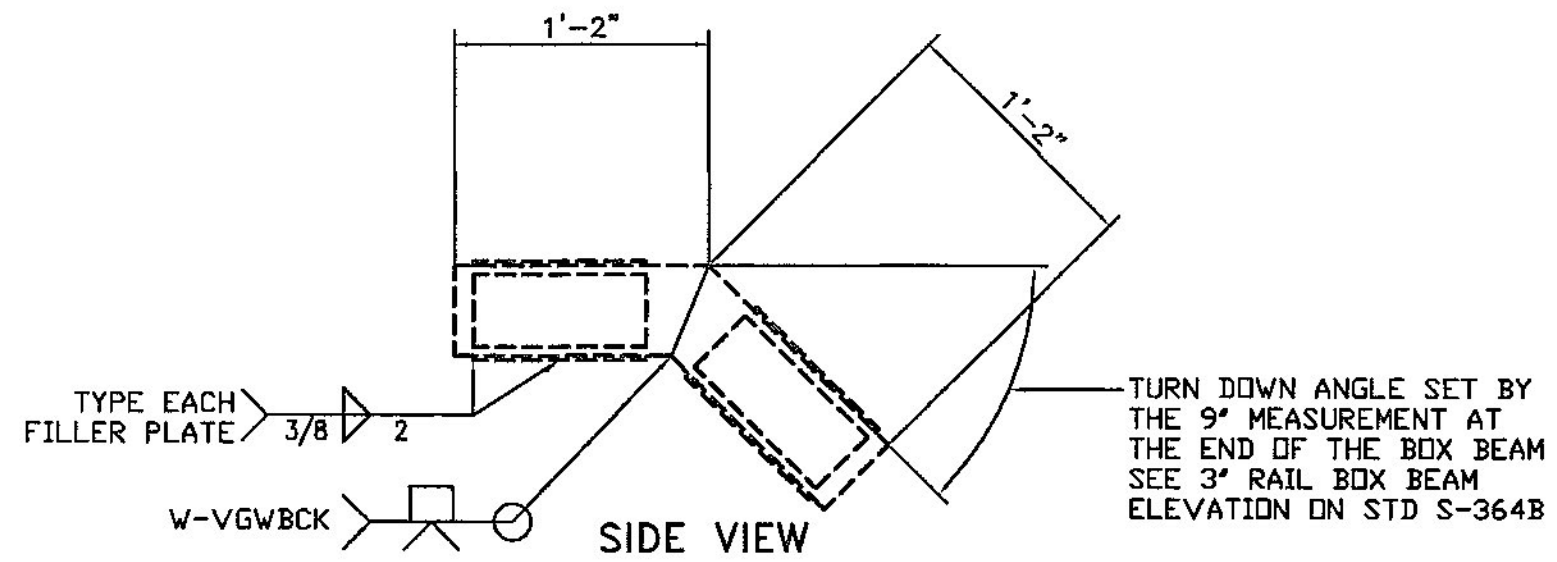
TURN BACK SPLICE TUBE ASSEMBLY



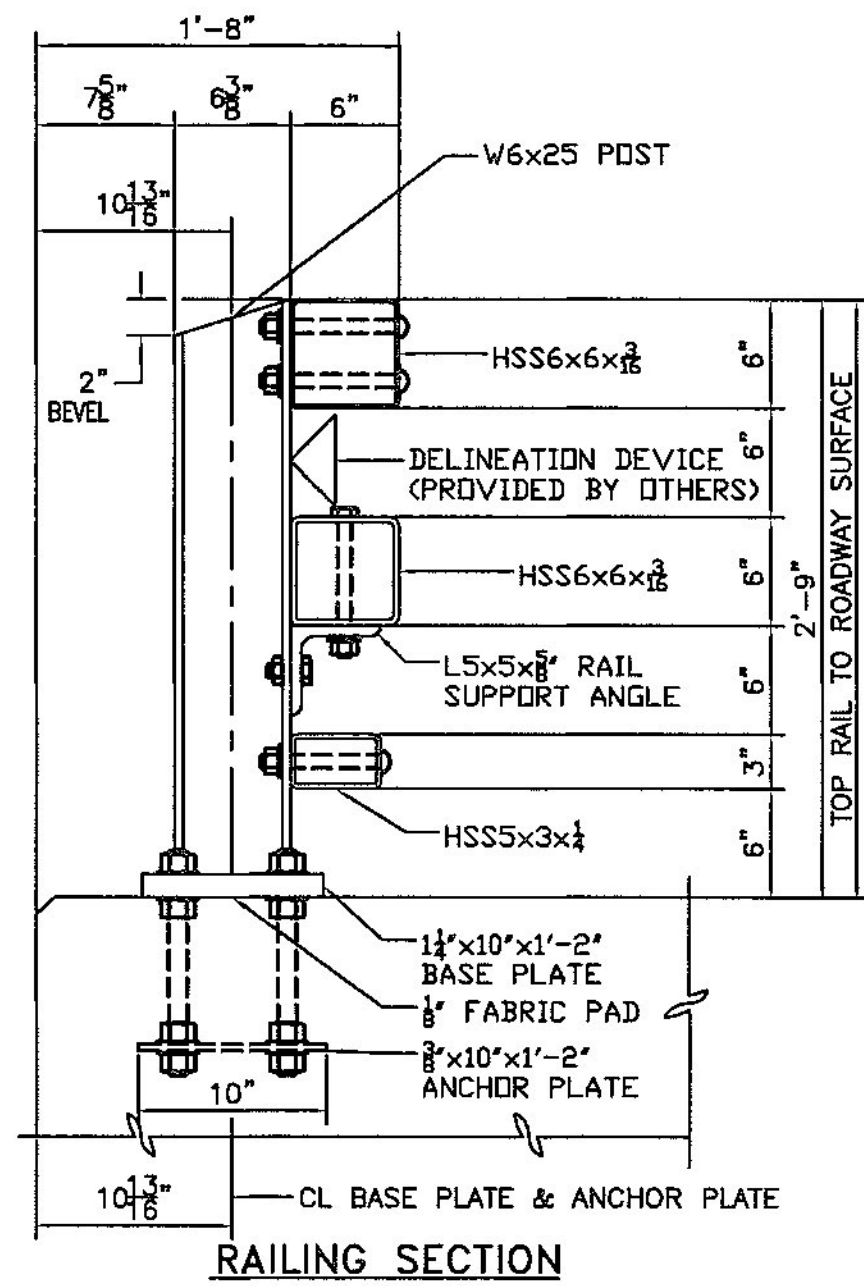
TOP VIEW



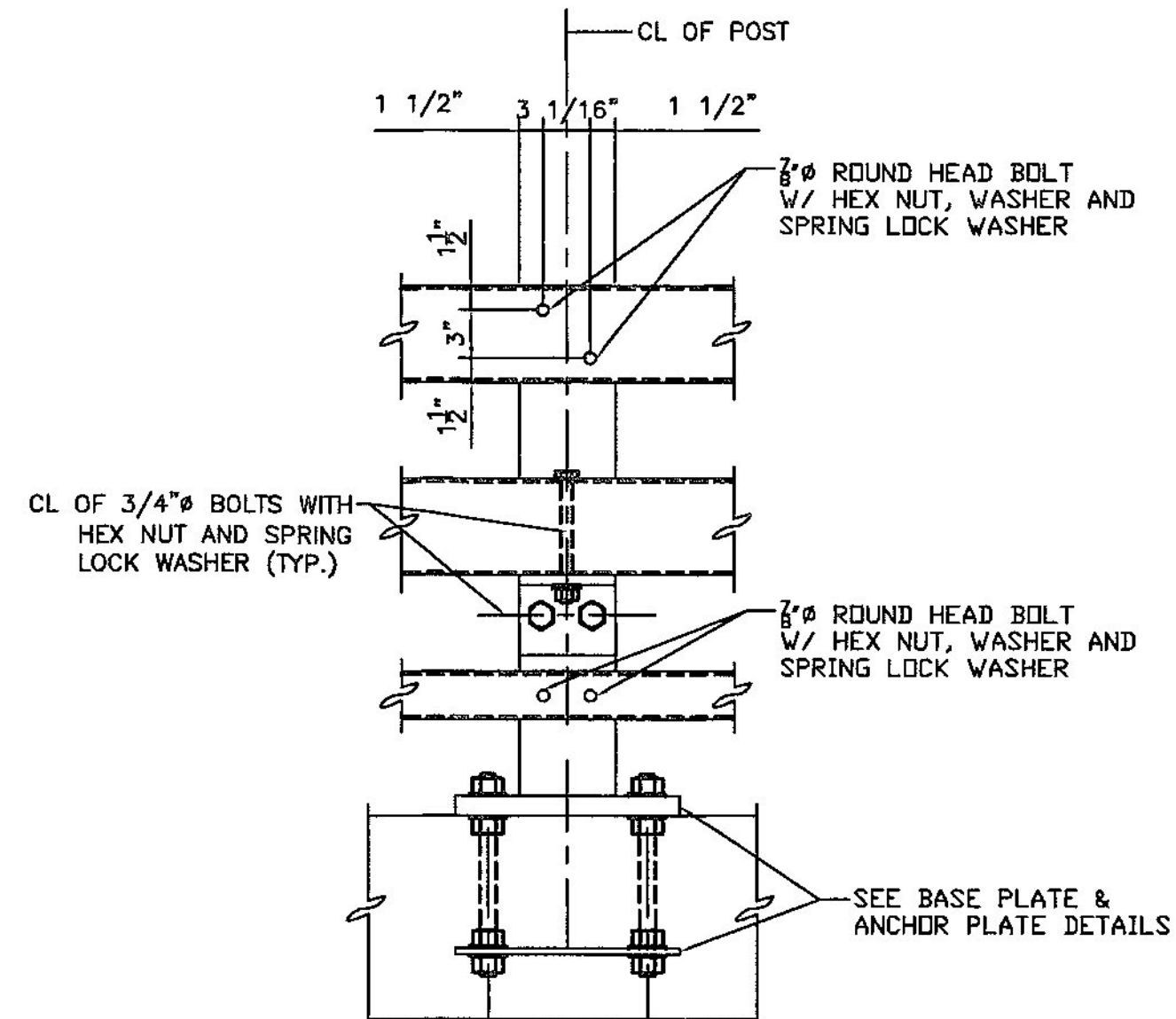
ROUND HEAD BOLT DETAIL



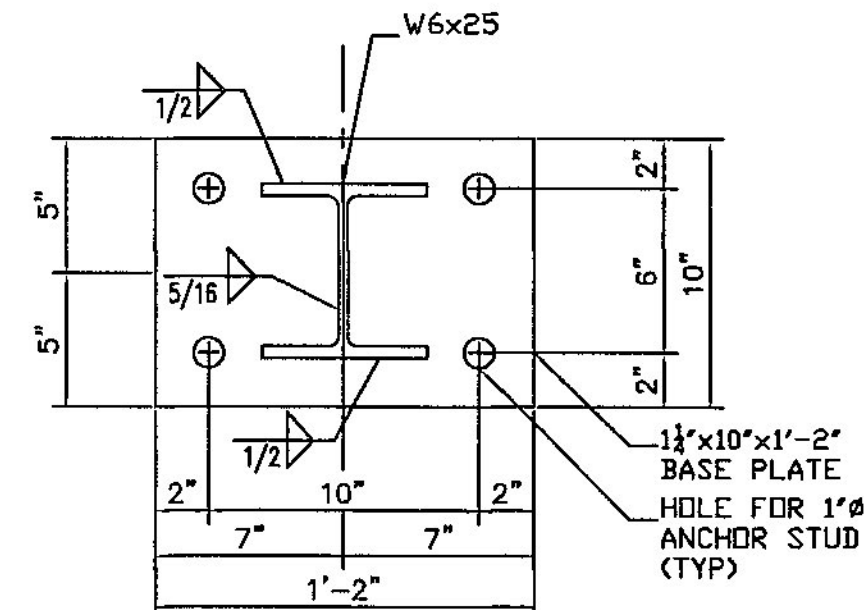
TURN BACK SPLICE TUBE DETAIL
TURN BACK & TURN TUBE JOINT



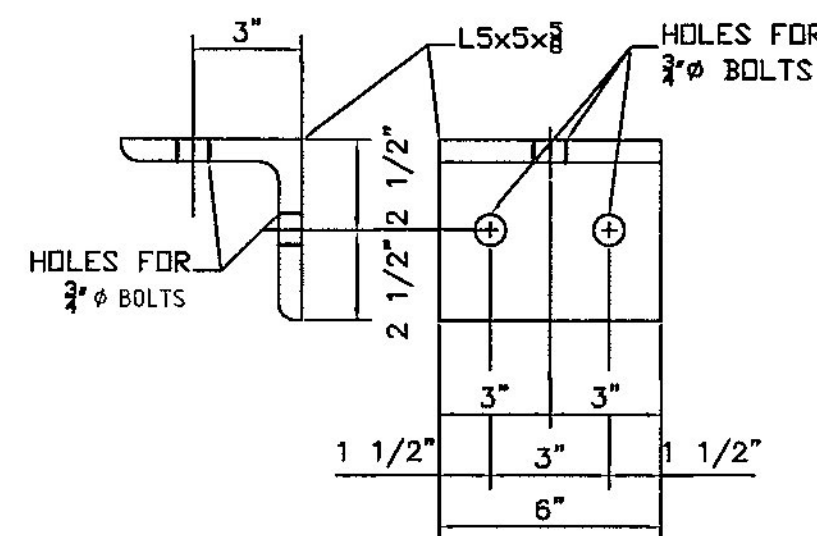
RAILING SECTION



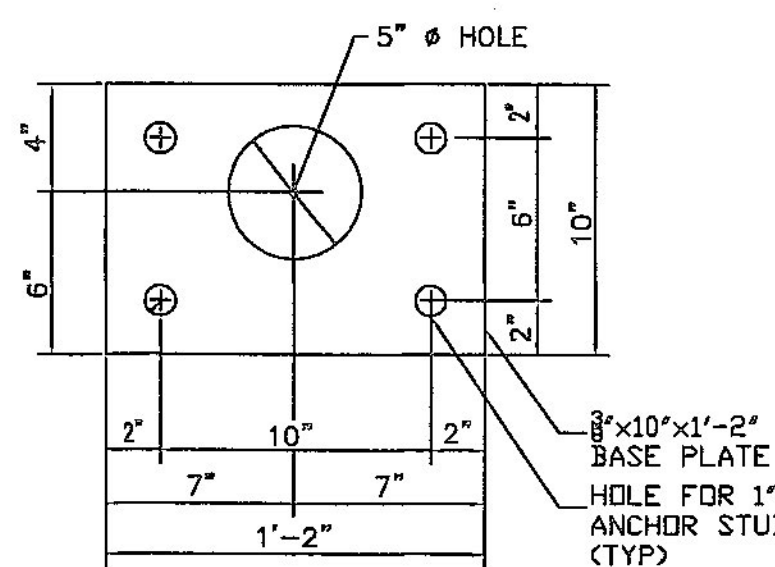
RAILING ELEVATION



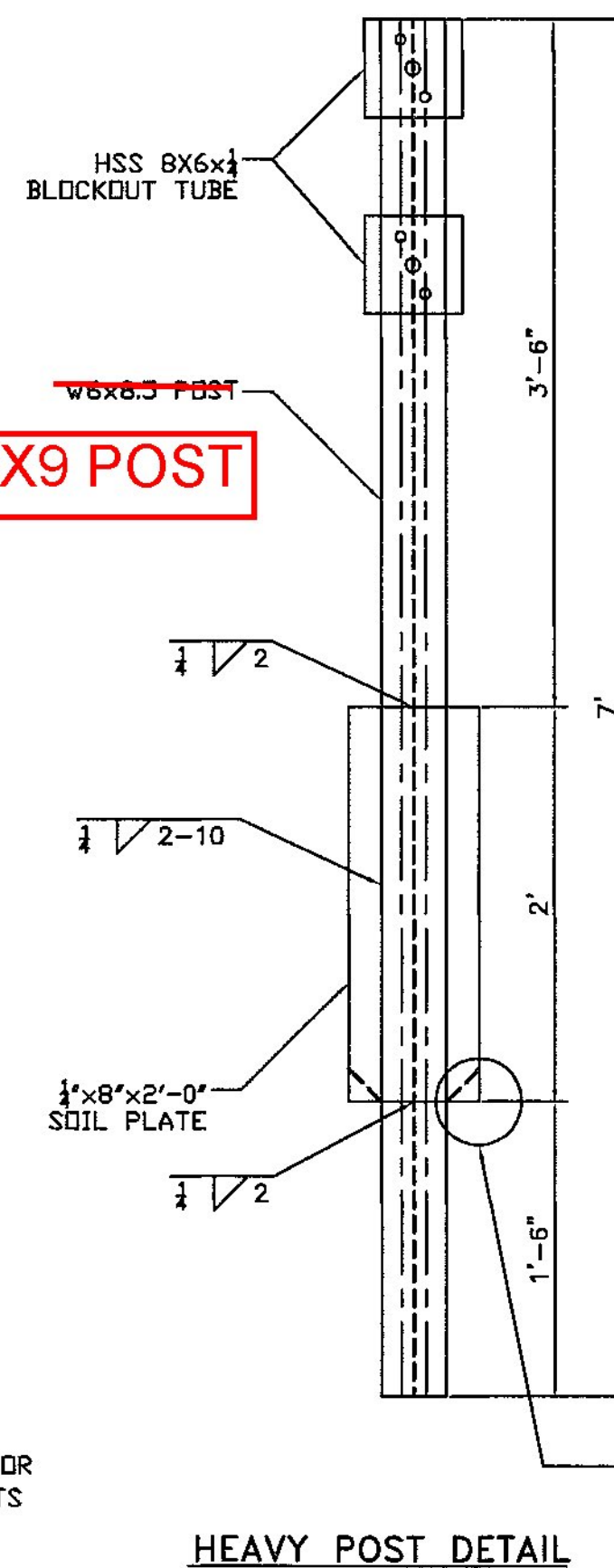
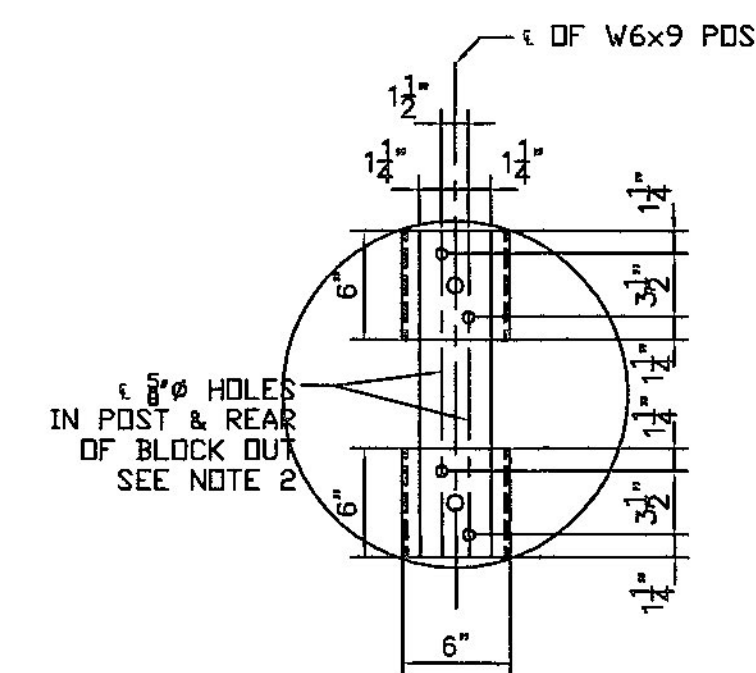
BASE PLATE DETAIL



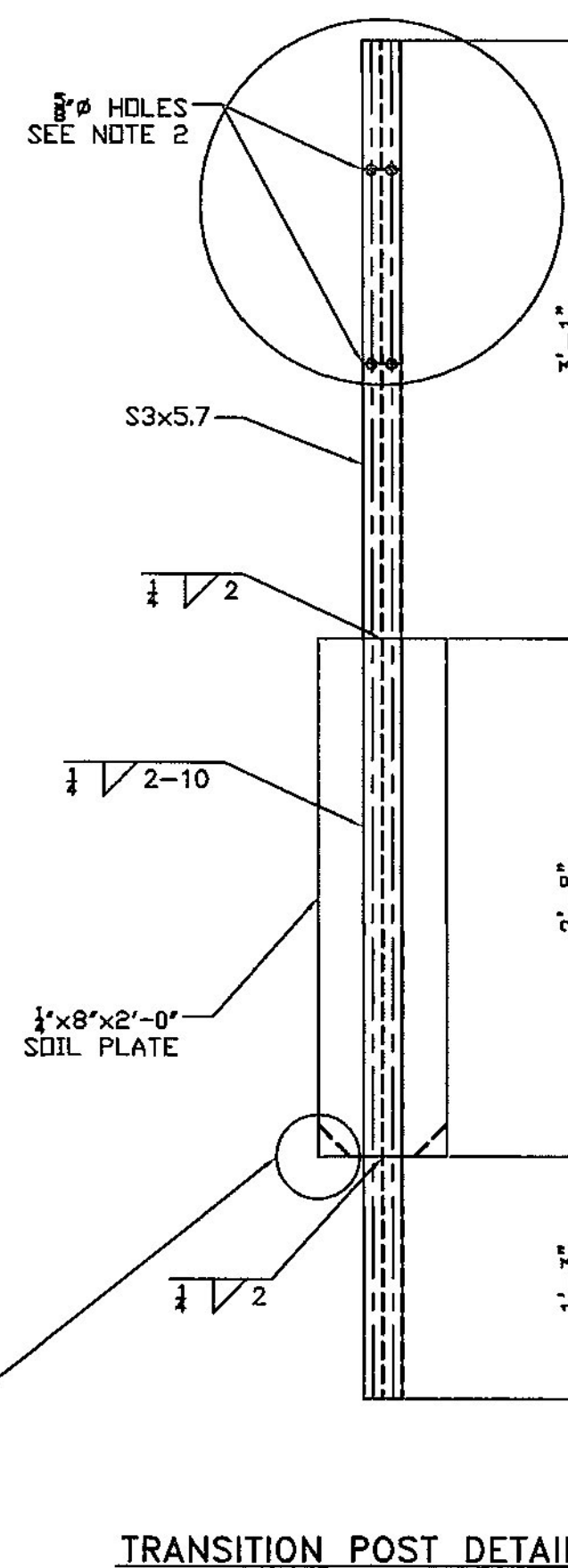
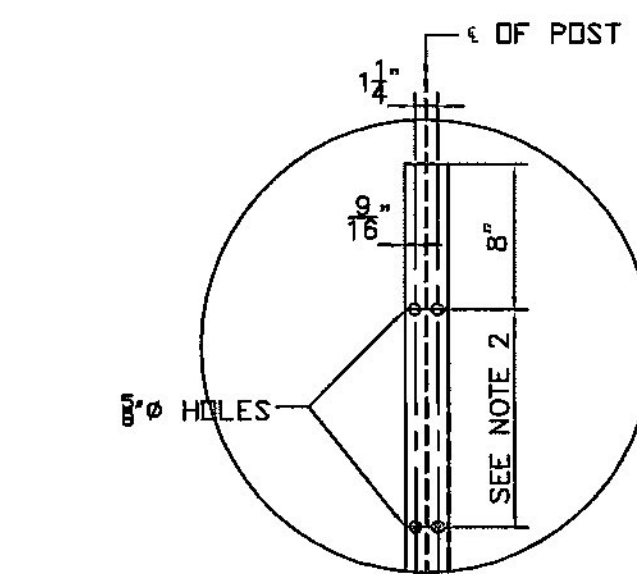
RAILING ANGLE DETAIL
L 5 x 5 x 5/8



ANCHOR PLATE DETAIL



HEAVY POST DETAIL



TRANSITION POST DETAIL

- NOTES:
- ALL WORK AND MATERIALS SHALL CONFORM TO SECTION 525.
 - PRIOR TO GALVANIZING THE ASSEMBLED POST, GRIND ALL EDGES TO A MINIMUM RADIUS OF 1/8".
 - ALL POSTS SHALL BE SET NORMAL TO GRADE. THE MAXIMUM CENTER TO CENTER SPACING OF BRIDGE RAIL POSTS IS 8'-3".
 - SECTIONS OF RAIL TUBE SHALL BE ATTACHED TO A MINIMUM OF TWO BRIDGE POST AND PREFERABLY TO AT LEAST 4 POSTS.
 - RAIL TUBE EXPANSION JOINTS SHALL BE PROVIDED IN ANY RAIL BAY SPANNING THE END OF AN INTEGRAL ABUTMENT BRIDGE AND AT ALL SUPERSTRUCTURE EXPANSION JOINTS. EXPANSION JOINT WIDTH SHALL BE 4" @ 68°F AND WILL BE ADJUSTED IN THE FIELD BY THE ENGINEER FOR OTHER TEMPERATURES.
 - HOLES IN RAILS FOR TUBE ATTACHMENT MAY BE FIELD-DRILLED. HOLES SHALL BE COATED WITH AN APPROVED ZINC-RICH PAINT PRIOR TO INSTALLATION.
 - BOLTS SHALL BE TORQUED SNUG TIGHT (APPROXIMATELY 100 FT-LB).
 - SEE STANDARD DRAWING C-1B FOR DETAILS OF DELINEATORS. A DELINEATOR SHALL BE INSTALLED AT 30 FOOT SPACING FOR THE NEAREST POST. WHITE IS TO BE INSTALLED ON THE DRIVER'S RIGHT. FOR ONE WAY BRIDGES, YELLOW IS TO BE INSTALLED ON THE DRIVER'S LEFT. PAYMENT SHALL BE INCIDENTAL TO OTHER ITEMS.
 - ANY BENDING OF RAIL SHALL BE DONE AT THE FABRICATION PLANT ACCORDING TO A PROCEDURE PROVIDED BY THE FABRICATOR.
 - THE MINIMUM DISTANCE FROM THE POST TO AN EXPANSION JOINT SHALL BE DETERMINED BY THE MINIMUM EDGE DISTANCE OF 5" FROM ANY ANCHORS STUD TO THE END OF THE SLAB, OR TO THE EXPANSION JOINT RECESS POUR, IF ONE IS USED.
 - THIS RAILING MEETS THE REQUIREMENTS FOR A TL-4 SERVICE LEVEL.
 - PROTRUSIONS CAUSED BY WELDING OR GALVANIZING ARE NOT PERMITTED ON THE ADJOINING SURFACES OF THE BOX BEAM RAILS, SPLICE TUBES AND FILL PLATES.
 - FOUR (4) 3/4" DIAMETER BOLTS, 7 1/2" LONG WITH TWO (2) WASHERS AND HEAVY HEX NUT ON EACH BOLT. NUT TO BE FINGER TIGHT AND THE FIRST THREAD BELOW THE NUT TO BE BURRED TO PREVENT DISLODGING. FOUR (4) BOLTS AT EACH SPLICE.

Vermont Agency of Transportation
RECEIVED
CK'D BY M. Umberger OK'D BY C. Carlson
July 2, 2013
RESUBMIT Approved AsNoted
BY C. Carlson DATE 07/03/13

HIGHWAY SAFETY CORP
GLASTONBURY, CT
860-633-9445
ITEM 525.335 3-RAIL BOX BEAM
TOWN OF ST. JOHNSBURY
COUNTY OF CALEDONIA
US ROUTE 2 - PRINCIPAL ARTERIAL
BRIDGE NO. 108
PROJECT NO. BRF 028-4(25)S
GENERAL CONTRACTOR
SUB CONTRACTOR
DRAWN
CHECKED
DATE
SCALE
SIZE

CERTIFIED FABRICATOR
REC. JOB NO. 1911
SHEET NO. 4 of 4
LAFAYETTE
06-01-13
NONE
D