

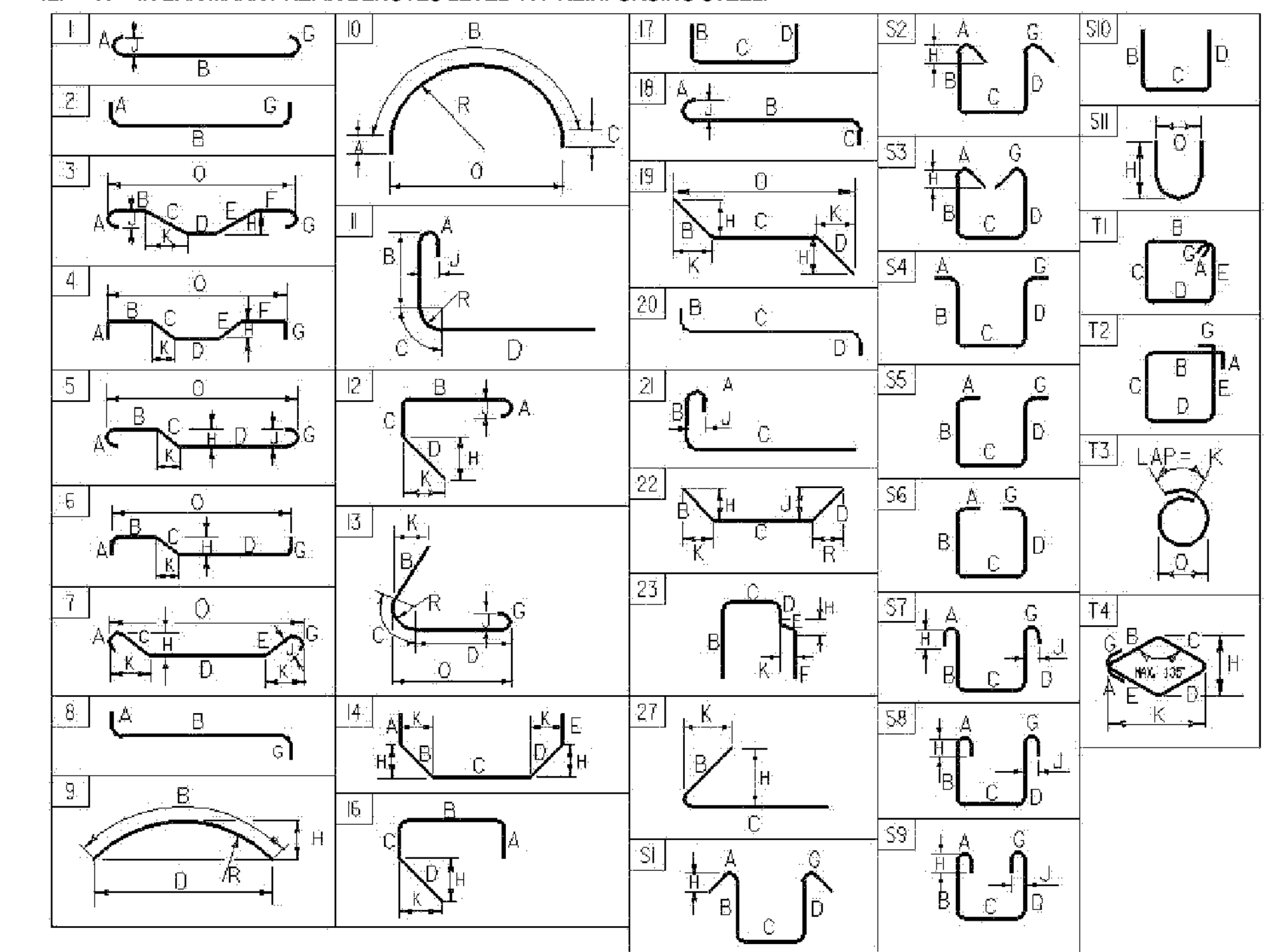
STATE OF VERMONT
AGENCY OF TRANSPORTATION

REINFORCING STEEL SCHEDULE

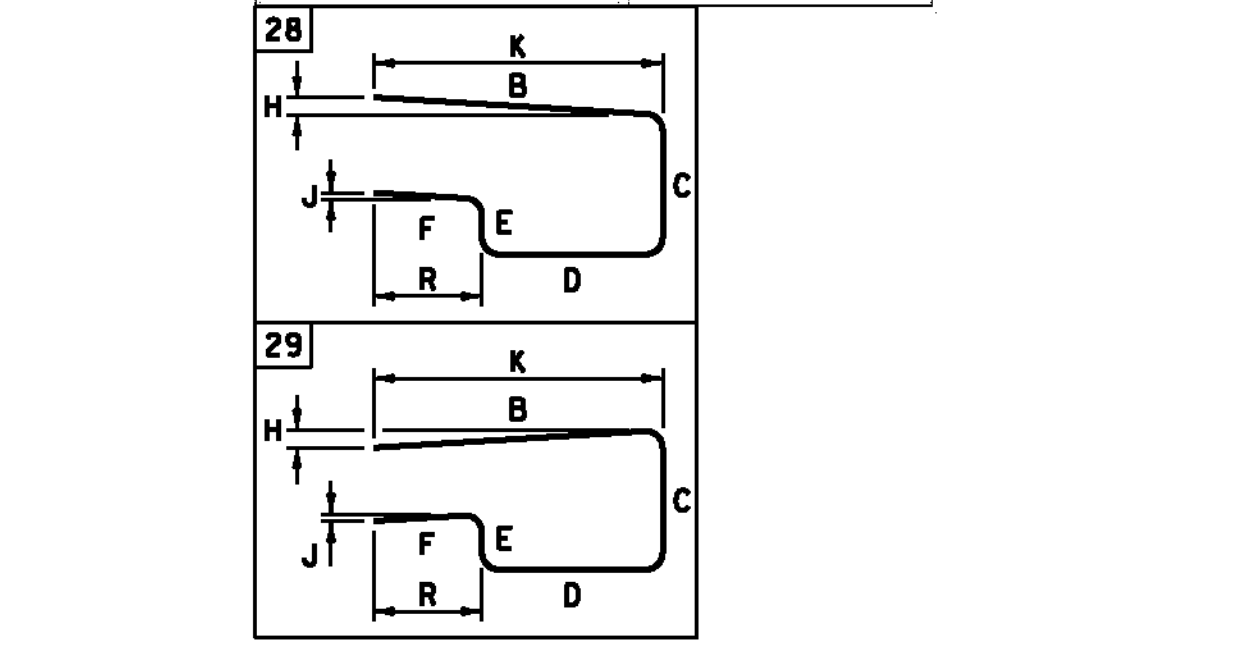
ITEM	EACH	SIZE	LENGTH	MARK	TYPE	A	B	C	D	E	F	G	H	J	K	R	O	ITEM	EACH	SIZE	LENGTH	MARK	TYPE	A	B	C	D	E	F	G	H	J	K	R	O		
DECK																																					
*	328	5	34'-10"	XS501	STR													▲	22	5	12'-6"	4W501	STR														
*	241	5	36'-0"	XS502	STR													▲	27	5	9'-1"	4W502	STR														
	20	5	40'-6"	XS503	STR																																
	196	5	11'-5"	XS504	28		5'-3"	0'-6"	3'-6"	0'-5"	1'-9"		0'-4"	0'-1"	5'-3"	1'-9"								2'-2"	1'-1"	2'-2"											
	196	5	11'-4"	XS505	29		5'-3"	0'-8"	3'-6"	0'-2"	1'-9"		0'-4"	0'-1"	5'-3"	1'-9"								2'-2"	10'-11"	2'-2"			0'-10"	2'-0"	2'-0"	0'-10"					
WINGWALL 4																																					
APPROACH SLAB 1																																					
*	24	5	31'-6"	1EAS501	STR																																
	33	5	5'-2"	1XAS502	1	0'-7"	4'-0"					0'-7"		0'-5"																							
*	40	9	20'-9"	1EAS901	1	1'-3"	19'-6"					---		1'-0"																							
ABUTMENT 1																																					
* ▲	15	5	40'-6"	1A501	STR																																
▲	36	5	10'-10"	1A502	17		2'-7"	8'-3"	---																												
▲	20	5	4'-4"	1A503	17		2'-2"	2'-2"	---																												
▲	6	5	12'-3"	1A509	17		2'-7"	9'-8"	---																												
* ▲	37	6	10'-10"	1A601	17		2'-7"	8'-3"	---																												
* ▲	5	6	12'-3"	1A602	17		2'-7"	9'-8"	---																												
* ▲	9	5	40'-6"	1XA504	STR																																
	36	5	13'-1"	1XA505	3	0'-7"	4'-6"	8'-0"	---	---	---	---	1'-6"	0'-5"	1'-6"																						
	42	5	6'-11"	1XA506	17		2'-2"	2'-7"	2'-2"																												
	36	5	6'-9"	1XA507	17		2'-5"	1'-11"	2'-5"																												
	24	5	4'-4"	1XA508	17		2'-2"	2'-2"	---																												
WINGWALL 1																																					
▲	20	5	12'-6"	1W501	STR																																
* ▲	28	5	7'-9"	1W502	STR																																
	13	5	5'-5"	1W503	S10		2'-2"	1'-1"	2'-2"																												
	2	5	14'-6"	1W504	22		2'-2"	10'-2"	2'-2"				0'-7"	2'-1"	2'-1"	0'-7"																					
WINGWALL 2																																					
▲	24	5	12'-6"	2W501	STR																																
▲	27	5	9'-8"	2W502	STR																																
	13	5	5'-5"	2W503	S10		2'-2"	1'-1"	2'-2"																												
	2	5	15'-3"	2W504	22		2'-2"	10'-11"	2'-2"				0'-11"	1'-11"	1'-11"	0'-11"																					
APPROACH SLAB 2																																					
*	24	5	31'-6"	2EAS501	STR																																
	33	5	5'-2"	2XAS502	1	0'-7"	4'-0"					0'-7"		0'-5"																							
*	40	9	20'-9"	2EAS901	1	1'-3"	19'-6"					---		1'-0"																							
ABUTMENT 2																																					
* ▲	13	5	40'-6"	2A501	STR																																
▲	36	5	10'-3"	2A502	17		2'-7"	7'-8"	---																												
▲	16	5	4'-4"	2A503	17		2'-2"	2'-2"	---																												
▲	6	5	11'-8"	2A509	17		2'-7"	9'-1"	---																												
* ▲	37	6	10'-3"	2A601	17		2'-7"	7'-8"	---																												
* ▲	5	6	11'-8"	2A602	17		2'-7"	9'-1"	---																												
* ▲	9	5	40'-6"	2XA504	STR																																
	36	5	13'-1"	2XA505	3	0'-7"	4'-6"	8'-0"	---	---	---	---	1'-6"	0'-5"	1'-6"																						
	42	5	6'-11"	2XA506	17		2'-2"	2'-7"	2'-2"																												
	36	5	6'-9"	2XA507	17		2'-5"	1'-11"	2'-5"																												
	24	5	4'-4"	2XA508	17		2'-2"	2'-2"	---																												
WINGWALL 3																																					
▲	18	5	12'-6"	3W501	STR																																
* ▲	28	5	7'-2"	3W502	STR																																
	13	5	5'-5"	3W503	S10		2'-2"	1'-1"	2'-2"																												
	2	5	15'-3"	3W504	22		2'-2"	10'-11"	2'-2"				0'-6"	2'-1"	2'-1"	0'-6"																					

~ NOTES ~

- UNLESS OTHERWISE DESIGNATED, ALL BAR REINFORCEMENT FOR CONCRETE IN SIZES UP TO AND INCLUDING NO. 18 SHALL CONFORM TO THE REQUIREMENTS OF THE "SPECIFICATIONS FOR DEFORMED BILLET-STEEL BARS FOR CONCRETE REINFORCEMENT", AASHTO M31 (ASTM A 615-S1). ALL BARS SHALL BE GRADE 60, UNLESS OTHERWISE DESIGNATED.
- FOR TYPICAL BENDING DETAILS, RECOMMENDED PIN DIAMETER "D" OF BENDS AND HOOKS, AND OTHER STANDARD PRACTICE, SEE CURRENT CONCRETE REINFORCING STEEL INSTITUTE "MANUAL OF STANDARD PRACTICE".
- BARS WHICH REQUIRE MORE ACCURATE BENDING THAN STANDARD PRACTICES SHOULD HAVE LIMITS INDICATED.
- ALL DIMENSIONS ARE OUT TO OUT OF BAR EXCEPT "A" AND "G" ON STANDARD 180 DEGREE AND 135 DEGREE HOOKS.
- "J" DIMENSION ON 180 DEGREE HOOKS TO BE SHOWN ONLY WHERE NECESSARY TO RESTRICT HOOK SIZE. OTHERWISE, STANDARD HOOKS ARE TO BE USED.
- "H" DIMENSION ON STIRRUPS TO BE SHOWN ONLY WHEN NECESSARY TO MAINTAIN CLEARANCES.
- WHERE SLOPE DIFFERS FROM 45 DEGREES, DIMENSIONS "H" AND "K" MUST BE SHOWN.
- ▲ DENOTES BARS TO BE CUT IN FIELD.
- * DENOTES ONE EXTRA BAR ADDED FOR TESTING PURPOSES.
- △ DENOTES TWO EXTRA BARS ADDED FOR TESTING PURPOSES.
- E IN BAR MARK PREFIX DENOTES EPOXY COATED REINFORCING STEEL.
- X IN BAR MARK PREFIX DENOTES LEVEL III REINFORCING STEEL.



ASTM STANDARD REINFORCING BARS				
BAR SIZE DESIGNATION	WEIGHT POUNDS PER FOOT	NOMINAL DIMENSIONS ROUND SECTION		
		DIAMETER INCHES	AREA INCHES ²	PERIMETER INCHES
#3	0.376	0.375	0.11	1.178
#4	0.668	0.500	0.20	1.571
#5	1.043	0.625	0.31	1.963
#6	1.502	0.750	0.44	2.356
#7	2.044	0.875	0.60	2.749
#8	2.670	1.000	0.79	3.142
#9	3.400	1.128	1.00	3.544
#10	4.303	1.270	1.27	3.990
#11	5.313	1.410	1.56	4.430
#14	7.65	1.693	2.25	5.32
#18	13.60	2.257	4.00	7.09



PROJECT NAME: **ST. JOHNSBURY**
 PROJECT NUMBER: **BRF 028-4(25)S**
 FILE NAME: **s98b320rss.xls** PLOT DATE: **8/27/2012**
 PROJECT MANAGER: **C. CARLSON** DRAWN BY: **R. PELLETT**
 DESIGNED BY: **H. SALLS** CHECKED BY: **C. CARLSON**
REINFORCING STEEL SCHEDULE SHEET **30** OF **62**