

OFFSET BLOCK CHART FOR BRIDGE 20 NE & SW APPROACHES
POSTS P1L - P4L, P8L - P11L

OFFSET BLOCK CHART FOR BRIDGE 20 SE & NW APPROACHES
POSTS P1R - P4R, P8R - P11R

POST No.	OFFSET BLOCK	QTY.	OFFSET BLOCK ~ POST MTG. DIMENSIONS							BEV
			A	B	C	D	E	F (O.C.)	G	
P1L	OB1L	1	2'-9 1/16"	2'-6 1/16"	1'-1 1/16"	1 7/8"	9/16"	2'-8 13/16"	1 1/4"	15/16
P2L	OB2L	1	2'-6 3/16"	2'-3 3/16"	11 1/2"	1 7/8"	9/16"	2'-5 15/16"	1 1/4"	15/16
P3L	OB3L	1	2'-3 5/16"	2'-0 5/16"	9 7/8"	1 7/8"	9/16"	2'-3 1/16"	1 1/4"	15/16
P4L	OB4L	1	2'-0 7/16"	1'-9 7/16"	8 5/16"	1 7/8"	9/16"	2'-0 3/16"	1 1/4"	15/16
P8L	OB8L	1	2'-4 7/8"	2'-1 7/8"	1'-1 5/16"	1 7/8"	5/8"	2'-4 9/16"	1 1/4"	1
P9L	OB9L	1	2'-2 9/16"	1'-11 9/16"	11 5/8"	1 7/8"	5/8"	2'-2 1/4"	1 1/4"	1
P10L	OB10L	1	2'-0 3/16"	1'-9 3/16"	10"	1 7/8"	5/8"	1'-11 7/8"	1 1/4"	1
P11L	OB11L	1	1'-9 7/8"	1'-6 7/8"	8 5/16"	1 7/8"	5/8"	1'-9 9/16"	1 1/4"	1

POST No.	OFFSET BLOCK	QTY.	OFFSET BLOCK ~ POST MTG. DIMENSIONS							BEV
			A	B	C	D	E	F (O.C.)	G	
P1R	OB1R	1	2'-9 1/2"	2'-6 1/2"	1'-1 5/16"	1 7/8"	5/8"	2'-9 3/16"	1 1/4"	1
P2R	OB2R	1	2'-6 1/2"	2'-3 1/2"	11 5/8"	1 7/8"	5/8"	2'-6 3/16"	1 1/4"	1
P3R	OB3R	1	2'-3 9/16"	2'-0 9/16"	10"	1 7/8"	5/8"	2'-3 1/4"	1 1/4"	1
P4R	OB4R	1	2'-0 9/16"	1'-9 9/16"	8 5/16"	1 7/8"	5/8"	2'-0 5/16"	1 1/4"	1
P8R	OB8R	1	2'-5 1/4"	2'-2 1/4"	1'-1 5/16"	1 7/8"	9/16"	2'-4 15/16"	1 5/16"	15/16
P9R	OB9R	1	2'-3 1/2"	2'-0 1/2"	11 5/8"	1 7/8"	9/16"	2'-3 1/4"	1 5/16"	15/16
P10R	OB10R	1	2'-1 13/16"	1'-10 13/16"	9 15/16"	1 7/8"	9/16"	2'-1 1/2"	1 5/16"	15/16
P11R	OB11R	1	2'-0 1/16"	1'-9 1/16"	8 5/16"	1 7/8"	9/16"	1'-11 13/16"	1 5/16"	15/16

NOTE:
2 CLAMPING BARS CB-01-H (#28596) PER POSTS P1- P4, P8 - P11
4 CLAMPING BARS CB-03-A (#19447) PER POSTS P1- P4, P8 - P11
w/ 1/2"Ø-13 UNC S.S. BOLT x 1" LG. 'FB1',
1 1/16" O.D. x 17/32" I.D. x 3/32" THK. ALUM WASHER 'FW1' (#15280 & #19404) (16 PER POST)

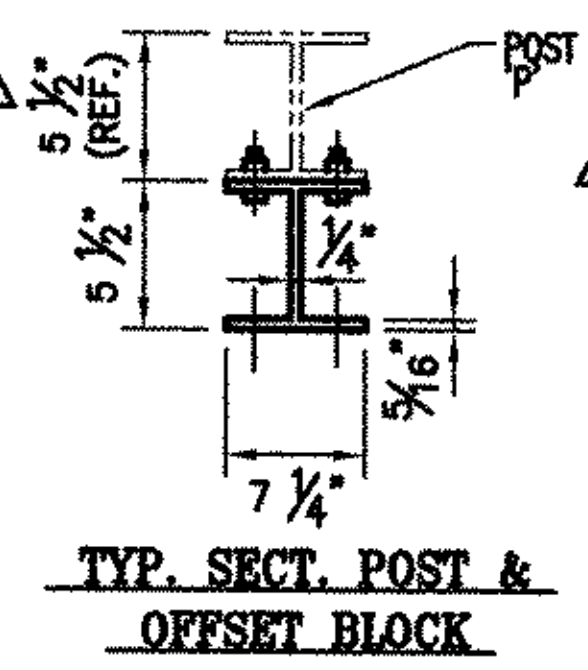
NOTE:
4 CLAMPING BARS CB-03-A (#19447) PER POSTS P1 - P4, P8 - P11
w/ 1/2"Ø-13 UNC S.S. BOLT x 1" LG. 'FB1',
1 1/16" O.D. x 17/32" I.D. x 3/32" THK. ALUM WASHER 'FW1' (#15280 & #19404) (8 PER POST)

OFFSET BLOCK ~ RAIL MTG. DIMENSIONS

POST No.	OFFSET BLOCK	H	J	K	L	M	N
P1L	OB1L	1"	1'-0 1/8"	2'-5 1/4"	7/8"	11 3/4"	2'-4 11/16"
P2L	OB2L	1"	10 9/16"	2'-2 3/8"	7/8"	10 3/16"	2'-1 13/16"
P3L	OB3L	1"	8 15/16"	1'-11 1/2"	7/8"	8 9/16"	1'-10 15/16"
P4L	OB4L	1"	7 3/8"	1'-8 5/8"	7/8"	7"	1'-8 1/16"
P8L	OB8L	1"	1'-0 3/8"	2'-1"	7/8"	11 15/16"	2'-0 15/16"
P9L	OB9L	1"	10 11/16"	1'-10 5/8"	7/8"	10 5/16"	1'-10 1/8"
P10L	OB10L	1"	9"	1'-8 5/16"	7/8"	8 5/8"	1'-7 13/16"
P11L	OB11L	1"	7 3/8"	1'-5 15/16"	7/8"	6 15/16"	1'-5 7/16"

OFFSET BLOCK ~ RAIL MTG. DIMENSIONS

POST No.	OFFSET BLOCK	H	J	K	L	M	N
P1R	OB1R	1"	1'-0 3/8"	2'-5 5/8"	7/8"	11 15/16"	2'-5 1/16"
P2R	OB2R	1"	10 11/16"	2'-2 11/16"	7/8"	10 5/16"	2'-2 1/16"
P3R	OB3R	1"	9"	1'-11 11/16"	7/8"	8 5/8"	1'-11 1/8"
P4R	OB4R	1"	7 3/8"	1'-8 3/4"	7/8"	6 15/16"	1'-8 1/8"
P8R	OB8R	1"	1'-0 3/8"	2'-1 5/16"	7/8"	11 15/16"	2'-0 15/16"
P9R	OB9R	1"	10 11/16"	1'-11 5/8"	7/8"	10 5/16"	1'-11 3/16"
P10R	OB10R	1"	9"	1'-9 7/8"	7/8"	8 5/8"	1'-9 1/2"
P11R	OB11R	1"	7 3/8"	1'-8 1/8"	7/8"	6 15/16"	1'-7 3/4"



ANODIZED
(SEE NOTES ON LB1)

BRIDGE No. 20
PROJECT No. BHF 030-2(19)S
ITEM No: 621.74

APPROVED: _____ REC'D APPROVAL _____
DRAWING _____

L.B. FOSTER COMPANY
1016 GREENTREE ROAD
PITTSBURGH, PENNSYLVANIA 15220

FOR: BECK & BELLUCCI, INCORPORATED
VERMONT AGENCY OF TRANSPORTATION

TOWN OF CAMBRIDGE, COUNTY LAMOILLE
BRIDGE RAILING FOR VT15 (MINOR ARTERIAL) OVER LAMOILLE RIVER
OFFSET BOX DETAILS

MADE CMS DATE 01/28/07 JOB No. AR0364 CUST. No. _____
CHECK BLJ DATE 03/01/07 DRAWING LB13 REV. No. 2

REV.	DESCRIPTION	BY	DATE
2	REVISED POST HEIGHT PER APPROVER MARKUP	CMS	03 27 07
1	REVISED ALL POST HIGHTS. PER APPROVERS DIMENSIONS	CMS	03 23 07