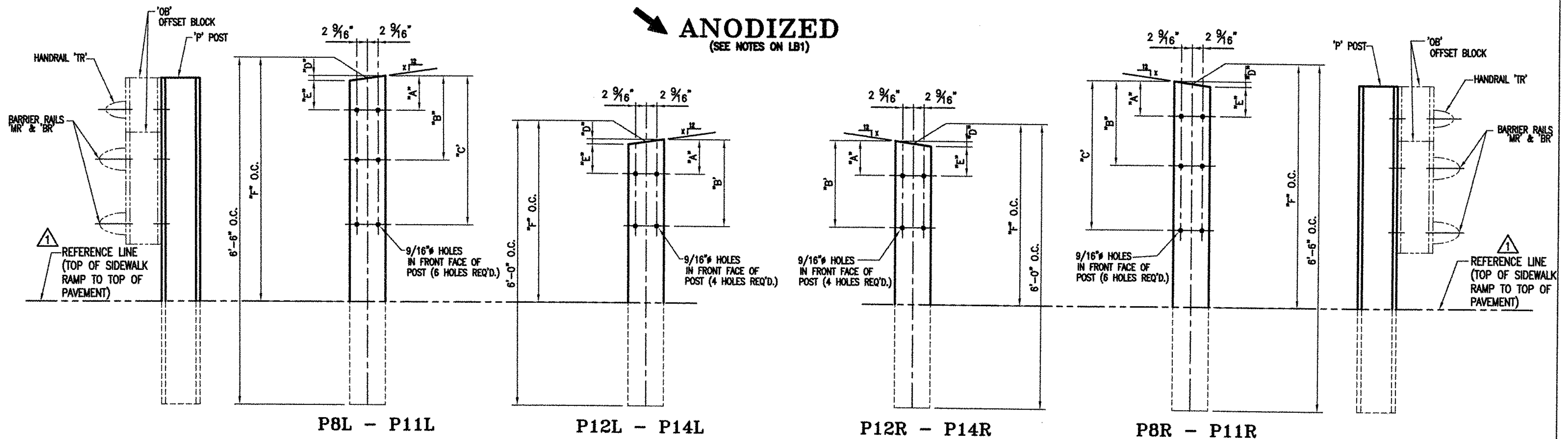


**ANODIZED**  
(SEE NOTES ON LB1)

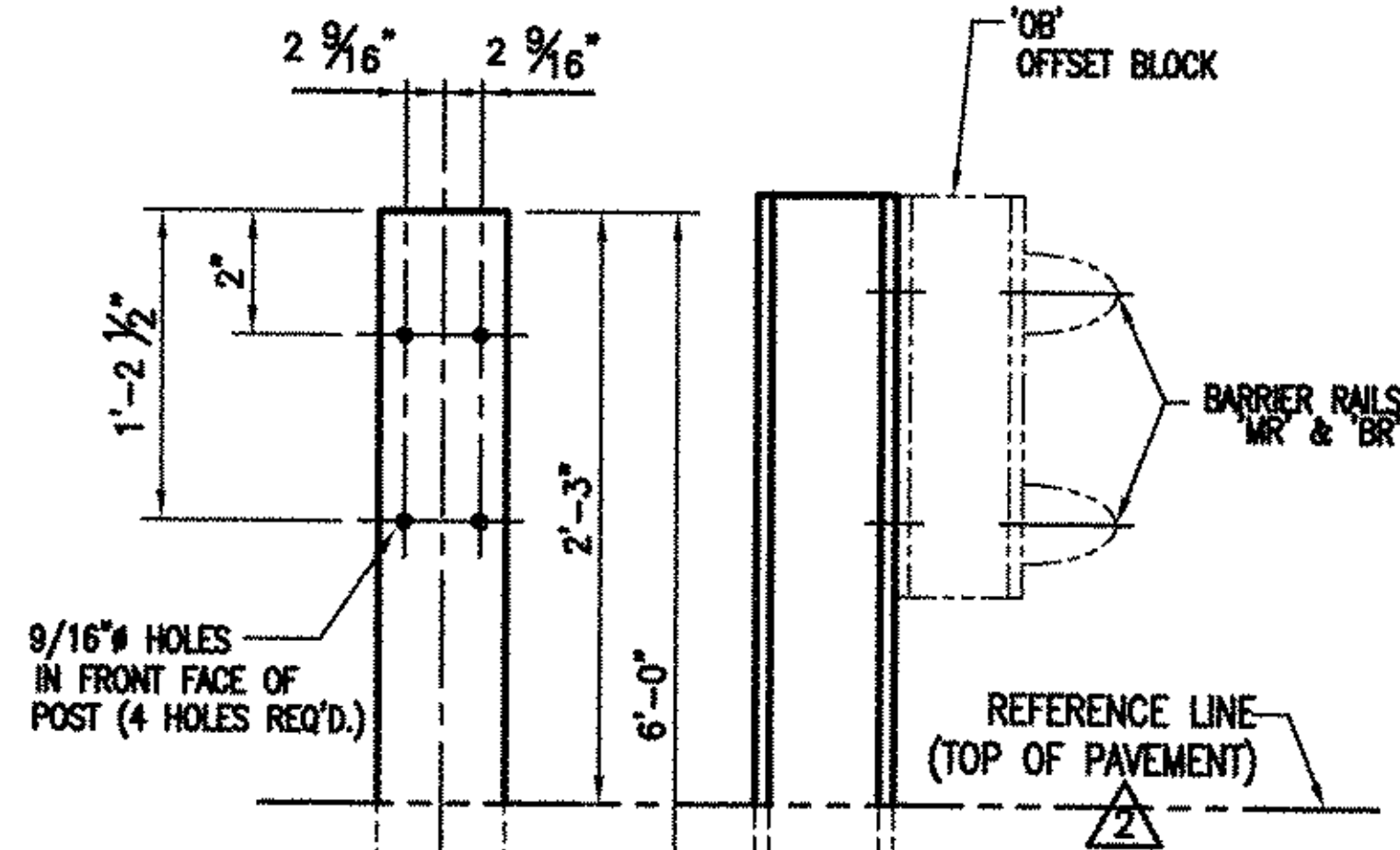


**POST DETAIL CHART FOR BRIDGE 20 SW APPROACH  
SIDEWALK CONDITION (STA.13+50 LT - STA.14+42 LT)**

POST No.	QTY.	OFFSET BLOCK MTG. DIMENSIONS						BEV
		A	B	C	D	E	F (O.C.)	
P8L	1	1 7/8"	1'-1 5/16"	2'-1 7/8"	5/8"	1 1/4"	3'-5"	1
P9L	1	1 7/8"	11 5/8"	1'-11 9/16"	5/8"	1 1/4"	3'-3 1/4"	1
P10L	1	1 7/8"	10"	1'-9 3/16"	5/8"	1 1/4"	3'-1 9/16"	1
P11L	1	1 7/8"	8 5/16"	1'-6 7/8"	5/8"	1 1/4"	2'-11 13/16"	1
P12L	1	2 1/8"	11 13/16"		1/4"	1 7/8"	2'-5 11/16"	7/16
P13L	1	2 1/8"	10 7/8"		1/4"	1 7/8"	2'-5 3/16"	7/16
P14L	1	2 1/8"	10"		1/4"	1 7/8"	2'-3 5/16"	7/16

**POST DETAIL CHART FOR BRIDGE 20 NW APPROACHES  
SIDEWALK CONDITION (STA.18+30 LT - STA.100+55 LT)**

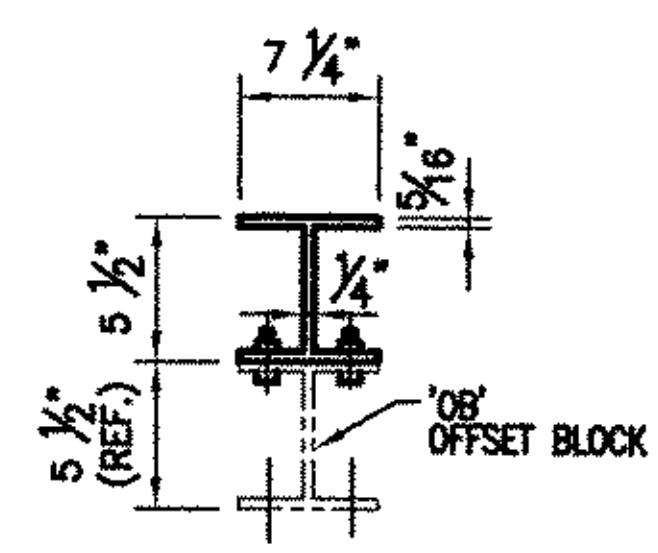
POST No.	QTY.	OFFSET BLOCK MTG. DIMENSIONS						BEV
		A	B	C	D	E	F (O.C.)	
P8R	1	1 7/8"	1'-1 5/16"	2'-2 1/4"	9/16"	1 5/16"	3'-5 1/4"	15/16
P9R	1	1 7/8"	11 5/8"	2'-0 1/2"	9/16"	1 5/16"	3'-3 15/16"	15/16
P10R	1	1 7/8"	9 15/16"	1'-10 13/16"	9/16"	1 5/16"	3'-2 5/8"	15/16
P11R	1	1 7/8"	8 5/16"	1'-9 1/16"	9/16"	1 5/16"	3'-1 5/16"	15/16
P12R	1	2 1/8"	1'-2 13/16"		1/4"	1 7/8"	2'-7 11/16"	7/16
P13R	1	2 1/8"	1'-2 3/4"		1/4"	1 7/8"	2'-6"	7/16
P14R	1	2 1/8"	1'-2 11/16"		1/4"	1 7/8"	2'-4 1/4"	7/16



**POST P15 ~ 3 REQ'D.  
POST DETAIL FOR BRIDGE 20 NW APPROACH**

**NOTE:**  
2 CLAMPING BARS CB-01-H (#28596) PER POSTS P8-P11  
4 CLAMPING BARS CB-03-A (#19447) PER POSTS P12-P14  
w/ 1/2"-13 UNC  
S.S. BOLT x 1" LG. 'FB1',  
1 1/16" O.D. x 17/32"  
I.D. x 3/32" THK. ALUM  
WASHER 'FW1'  
(#15280 & # 19404)  
(16 PER POST)

**NOTE:**  
4 CLAMPING BARS CB-03-A (#19447) PER POSTS P12-P14  
w/ 1/2"-13 UNC  
S.S. BOLT x 1" LG. 'FB1',  
1 1/16" O.D. x 17/32"  
I.D. x 3/32" THK. ALUM  
WASHER 'FW1'  
(#15280 & # 19404)  
(8 PER POST)



**TYP. SECT. POST &  
OFFSET BLOCK**

BRIDGE No. 20  
PROJECT No. BHF 030-2(19)S  
ITEM No: 621.74

APPROVED: \_\_\_\_\_ REC'D APPROVAL \_\_\_\_\_  
DRAWING \_\_\_\_\_

**L.B. FOSTER COMPANY**  
1016 GREENTREE ROAD  
PITTSBURGH, PENNSYLVANIA 15220

FOR: BECK & BELLUCCI, INCORPORATED  
VERMONT AGENCY OF TRANSPORTATION  
TOWN OF CAMBRIDGE, COUNTY LAMOILLE  
BRIDGE RAILING FOR VT15 (MINOR ARTERIAL) OVER LAMOILLE RIVER  
3L ALUMINUM APPROACH RAIL POST DETAILS

REV.	DESCRIPTION	BY	DATE
2	REVISED NOTATION PER APPROVER MARKUP	CMS	03 27 07
1	REVISED ALL POST HIGHTS. PER APPROVERS DIMENSIONS	CMS	03 23 07

MADE CMS DATE 01/28/07 JOB No. ARO364 CUST. No. \_\_\_\_\_  
CHECK BLW DATE 03/01/07 DRAWING LB12 REV. No. 2