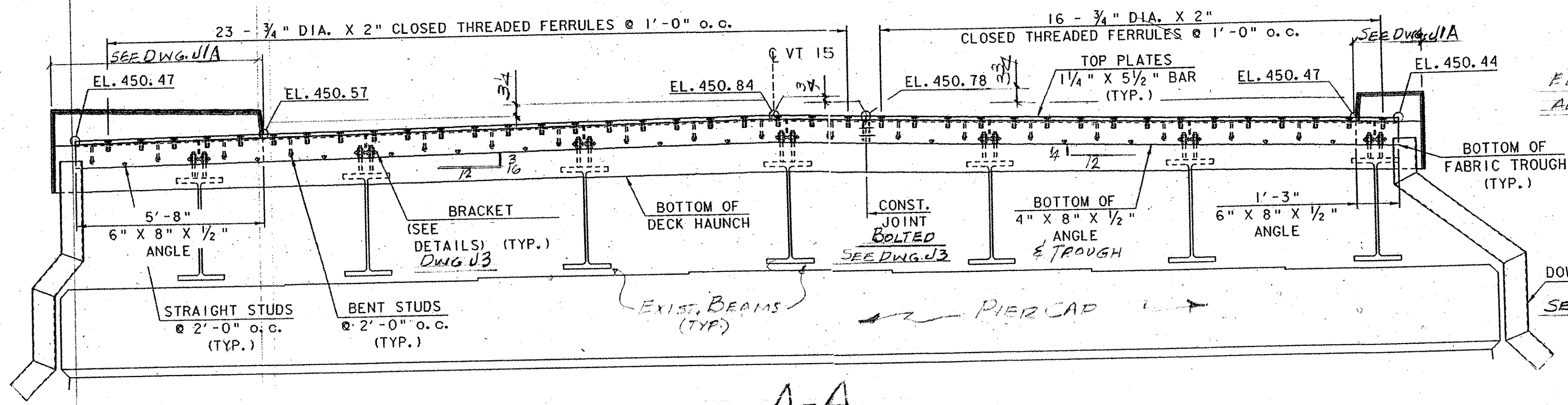


ALL DIMS GIVEN ALONG
 & OF EXPANSION JOINT.

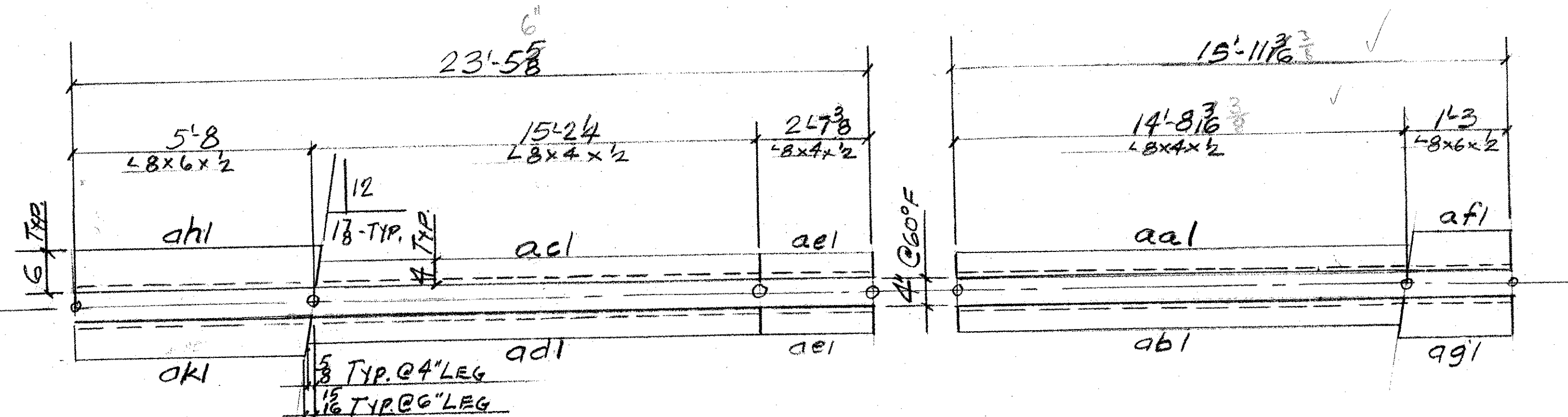


ELEVATIONS GIVEN @ TOP OF PIER
 ALONG & OF EXPANSION JOINT.

EJ3-2 - ONE REQ'D (PHASE 2)

EJ3-1 - ONE REQ'D (PHASE 1)

THE EXPANSION JOINT, EXCLUDING FABRIC, SHALL BE SHOP ASSEMBLED AND SHIPPED IN SECTIONS AS DETAILED SO THAT TRAFFIC MAY BE MAINTAINED DURING INSTALLATION. THE FABRIC TROUGH SHALL BE INSTALLED ONLY AFTER THE JOINT IS COMPLETELY IN PLACE.



PHASE 2

PHASE 1

ANGLE ASSEMBLY PLAN
 FOR WELDING DETAIL SEE DWG. J3

Structures

RECEIVED
 CRD BY DRP OK'D BY *me*
 MAR 09 2007
 RESUBMIT APPROVED AS NOTED
 BY *me* DATE 3/20/07

ABM INFO		SHOP BILL				JOB NO.	DRG. NO.
PAGE	LINE	NO.	DESCRIPTION	FT	IN	REMARKS	WEIGHT
	1		EXP JOINT	17	0 1/2	EJ3-1 PHASE 1	—
	1		DO	24	6 1/2	EJ3-2 DO 2	—
	1	1	L8x4x2	14	17 3/4	ca1	
	1	1	DO	14	18 3/4	abl	
	1	1	DO	15	2 1/6	ael	
	1	1	DO	15	5 1/6	adl	
	2	1	DO	2	7 3/8	ael	
	1	1	L8x6x2	1	4 3/8	af1	
	1	1	DO	5	9 3/8	ah1	
	1	1	DO	5	7 3/8	ak1	
	2	2	BAR 5/2 x 14	15	11 3/8	bal	15-18 ✓
	2	2	DO	2	7 3/8	bb1	
	2	2	DO	22	10 1/2	bc1	20-10 ✓
	2	2	R 2 x 3/2	7 1/2	5 1/2	bd1	
	2	2	DO	7 1/2	5 1/2	be1	
	4	4	3/4\"/>				
	4	4	3/4\"/>				
	14	14	R 2 x 6	1	2 1/2	pa1	
	14	14	R 2 x 8	1	2 1/2	pb1	
			3/4\"/>				
			3/4\"/>				
	1	1	PRIM. FAB THROUGH	40	0 1/2	MP3	3 1/2\"/>
	2	2	DOYLE RUBBER TAPE 6x3	40	0 1/2	NTS	ASST'S W/100-THEB
	56		1/4\"/>				
	112		1/4\"/>				
	112		R 3 x 3	3		WI	RWASH
	8		L 4 x 4 x 1/2	1	0	sa1	FOR SHIPPING
	16		3/4\"/>				
							DO
NOTE							
SEE DWG. J1 FOR SIDEWALK & CURB MATERIAL							
PAY ITEM 516-10							

OUT FOR APPROVAL	3-7-07						
OUT FOR APPROVAL							
ISSUED TO SHOP							
FIELD & OFFICE							

REV.	REMARKS	DATE	DWN	CHK	APP	Q.A.	NO.	DIA.	LGT	TYPE	WASHER
	PROJECT NO. DHF-030-2 (19)S STATE PROJECT NO. BRIDGE-20										
	MATERIAL M20-36 ELECTRODES P88 P88 HOLES AS NOTED SHOP BOLTS 3/8\"/>										
	SURFACE PREP. & PAINT:										
	GALVAN ZE AFTER FAB - ASTM-A123										

DESCRIPTION: EXP JOINT - PIER 3	DRAWN BY	DATE
JOB:	JPF	2-07
VE. MONT 15 OVER	CHKD BY	
LAMOTTE RIVER	APPROV BY	
CAMBRIDGE, VT.	Q.A.	
CUSTOMER: DECK & BELLUCCI	JOB NO.	DRG. NO.
CASCO BAY STEEL STRUCTURES, INC.	313	J1
75 SPRING HILL ROAD SACC, MAINE 04072	PHONE (207) 282-7360	FAX (207) 282-1179
	REV.	△