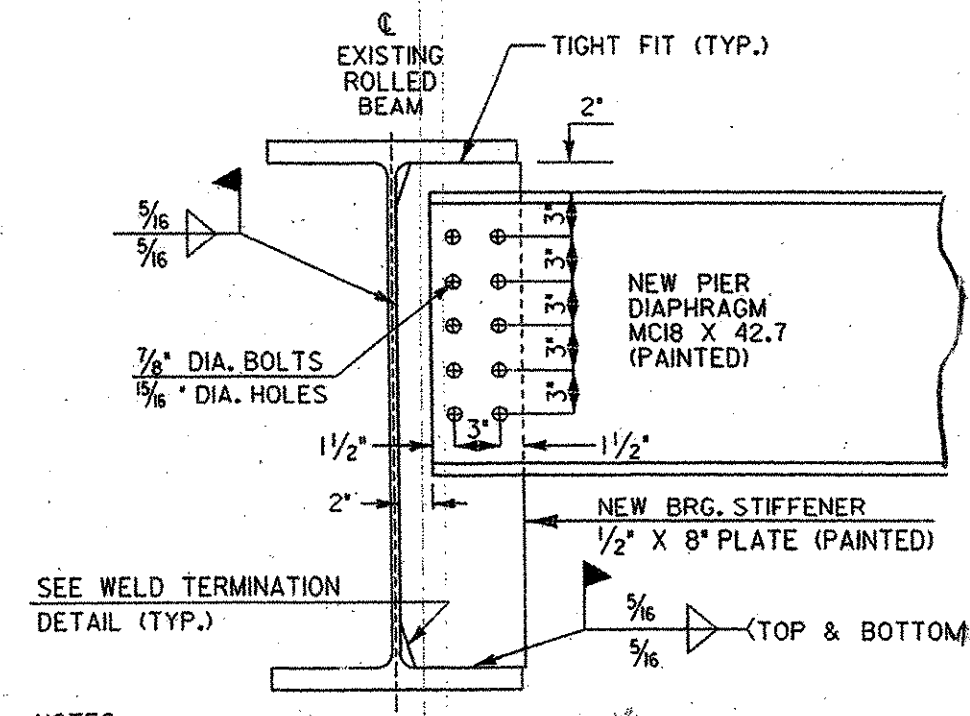


\* NO WELD FOR 1/4\"/>

\* 1/2\"/>

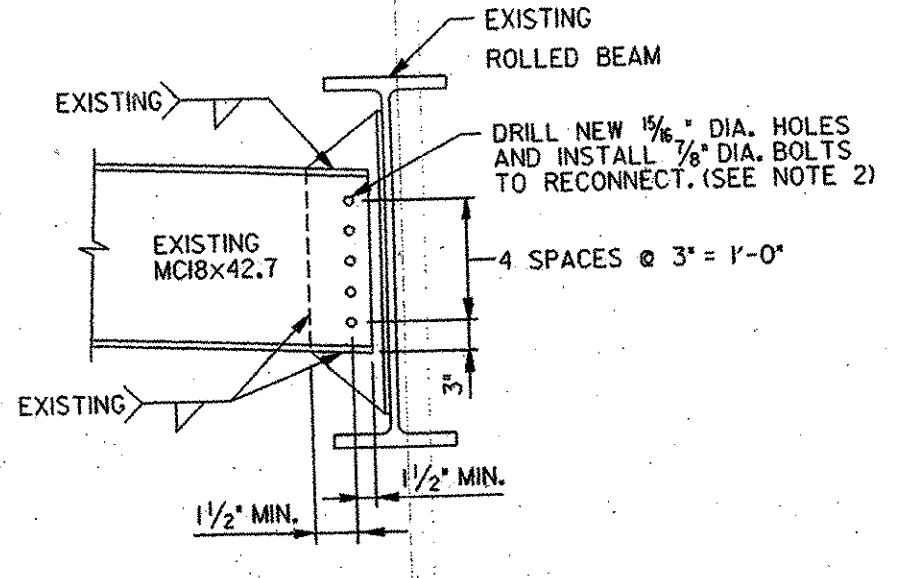
**WELD TERMINATION AND COPING DETAILS FOR STEEL MEMBERS**

N. T. S.

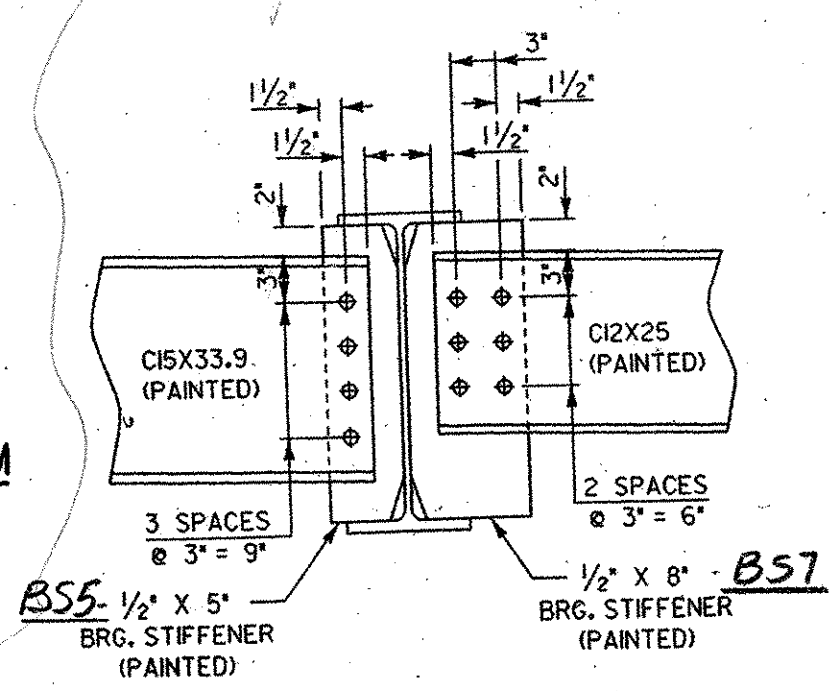


- NOTES:
1. BEARING STIFFENERS WILL BE LAID OUT PARALLEL TO AND CENTERED ON THE CENTERLINE OF BEARING.
  2. BEARING STIFFENERS TO BE PROVIDED WITH EXTRA LENGTH TO COMPENSATE FOR SLOPED AND DETERIORATED FLANGES. CONTRACTOR TO MEASURE AND FURNISH LENGTHS REQUIRED.

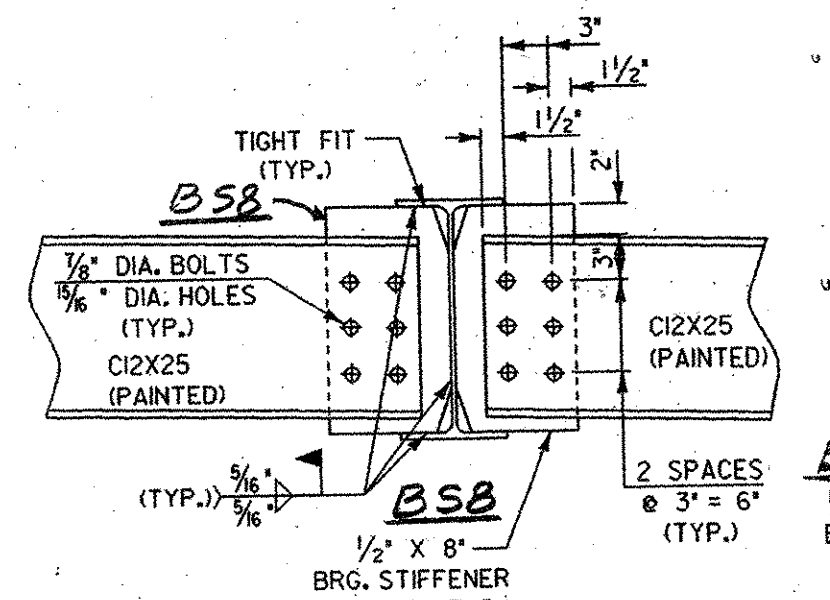
**PIER DIAPHRAGMS**



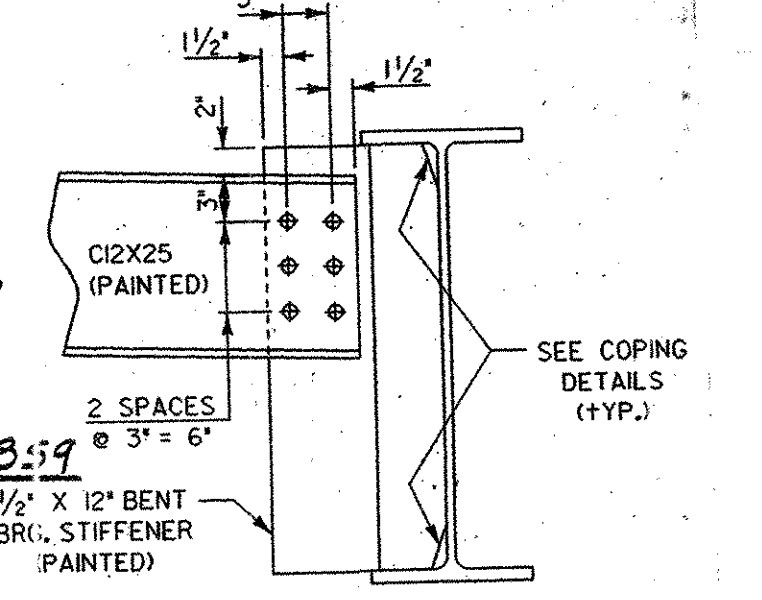
**DISCONNECT AND RECONNECT DIAPHRAGM**  
SPAN 2-5  
N.T.S.



**ABUTMENT DIAPHRAGM**  
AT W21 X 68  
N.T.S.

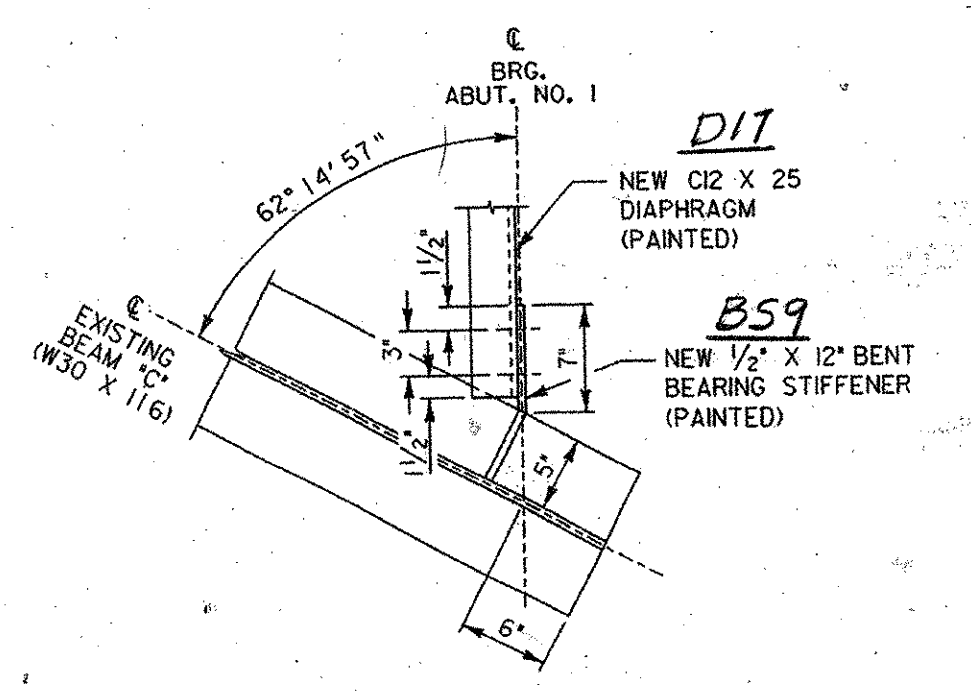


**ABUTMENT DIAPHRAGM**  
AT W16 X 36  
N.T.S.

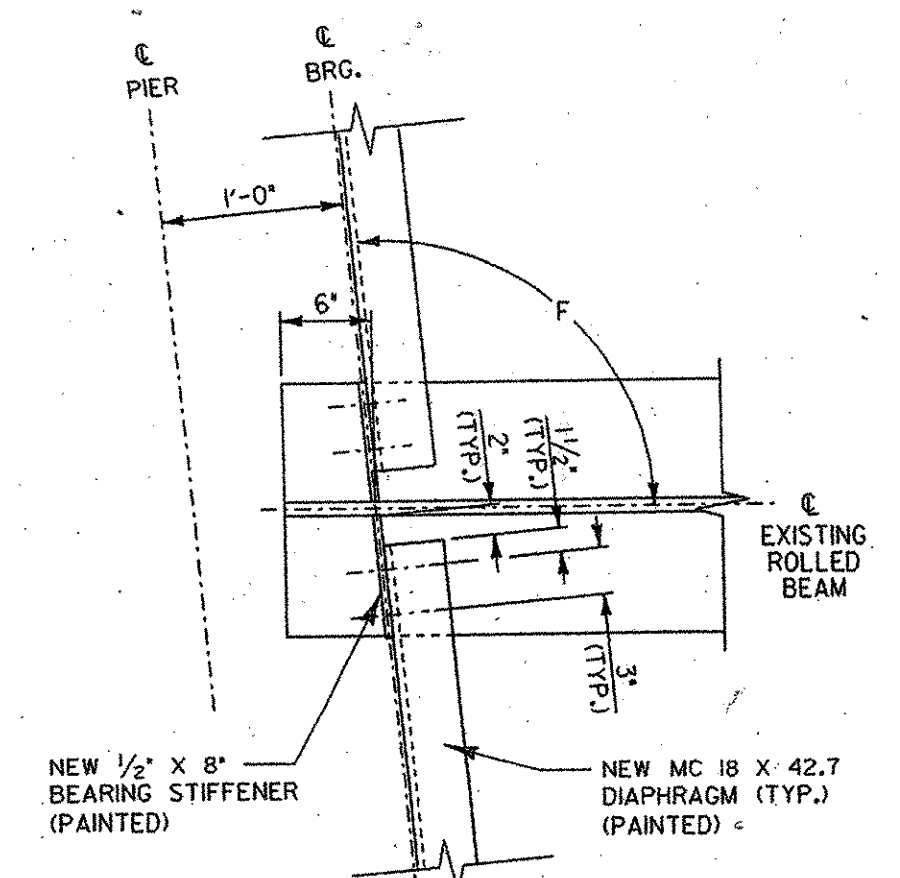


**ABUTMENT DIAPHRAGM**  
AT W30 X 116  
N.T.S.

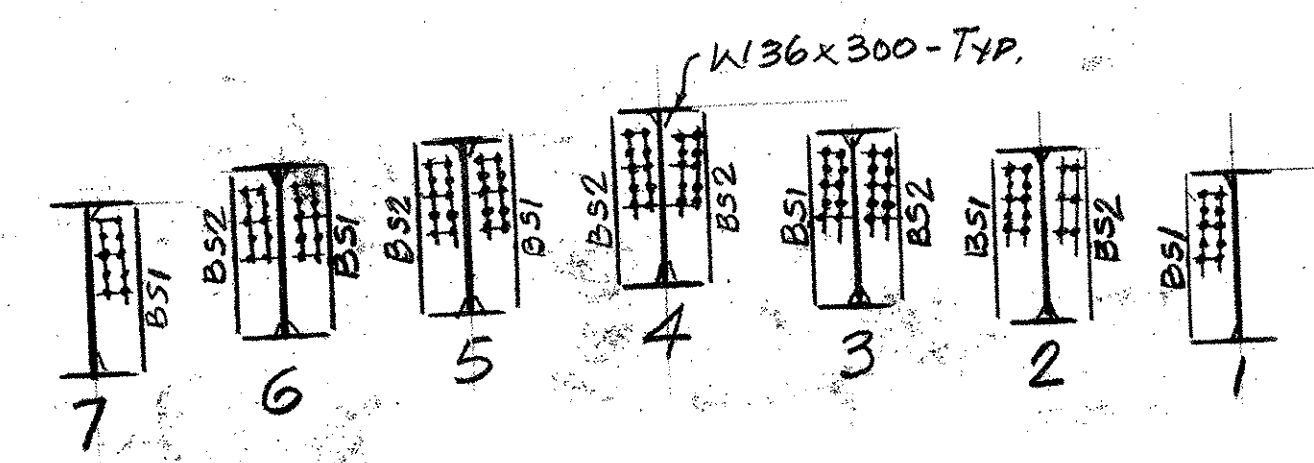
*Contractor must submit weld removal procedure and welding procedures for all field welding. Procedures must be approved prior to field work.*



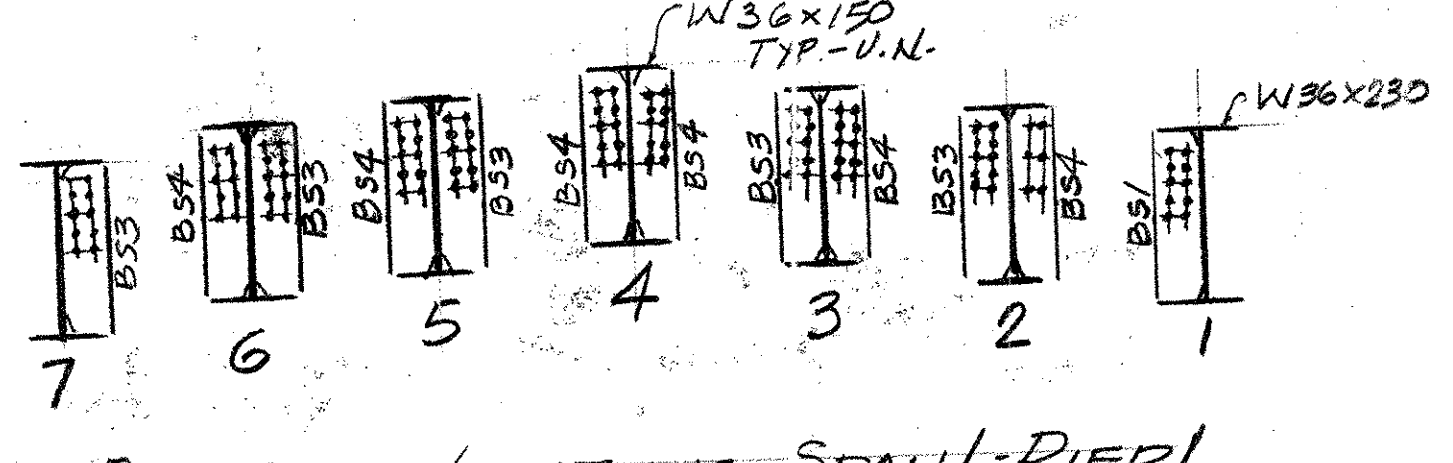
**BEARING STIFFENER DETAIL @ BEAM 'C'**  
N.T.S.



**BEARING STIFFENER DETAIL @ PIERS**  
N.T.S.



**BRG. STIFF. LOCATIONS - SPANS 2, 3, 4 & 5**



**BRG. STIFF. LOCATIONS - SPAN 1-PIER 1**

*Structures Copy*

OUT FOR APPROVAL	2-15-07								
OUT FOR APPROVAL									
ISSUED TO SHOP									
FIELD & OFFICE									

REV.	REMARKS	DATE	DWN	CHK	APP	Q.A.	NO.	DIA.	LGT	TYPE	WASHER
	PROJECT NO. BHF-030-2(19)S STATE PROJECT NO. BRIDGE-20										
	MATERIAL: A572-50 ELECTRODES: PER PROC. HOLES: AS NOTED SHOP BOLTS: 3/8 A325										
	SURFACE PREP. & PAINT:										

SHOP COAT PER SUPPLEMENTAL SPEC. SECT. 513

DESCRIPTION: FRAMING PLAN	DRAWN BY	DATE
JOB: VERMONT 15 OVER LAMOILLE RIVER CAMBRIDGE, VT	CHKD BY	1-07
	APPROV BY	
	Q.A.	

CUSTOMER: BECK & BELLUCCI

**CASCO BAY STEEL STRUCTURES, INC.**

75 SPRING HILL ROAD SACO, MAINE 04072  
PHONE (207) 282-7360 FAX. (207) 282-1179

RECEIVED  
CHKD BY: BFP  
FEB 21 2007  
RESUBMIT APPROVED AS NOTED  
BY: DATE