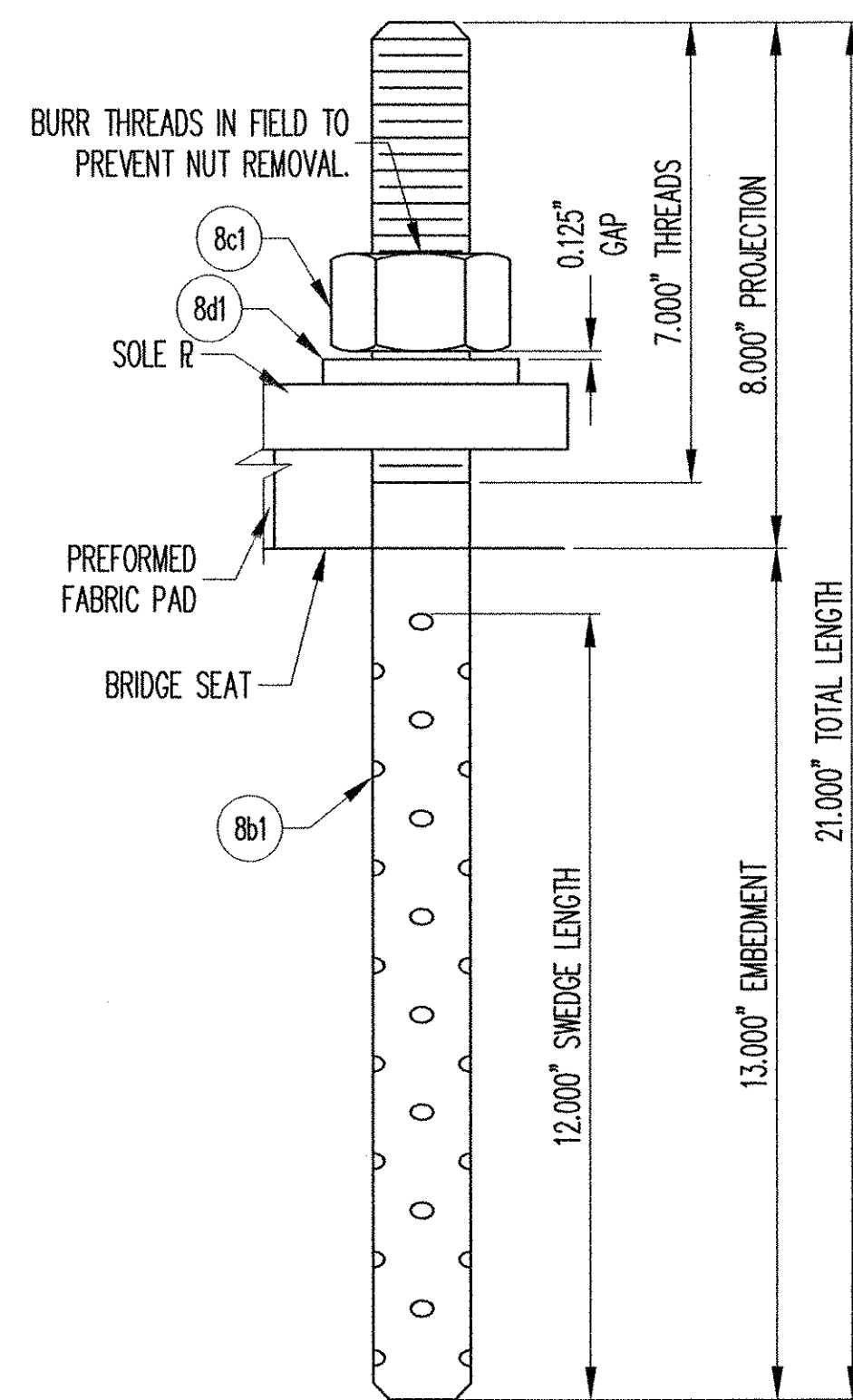
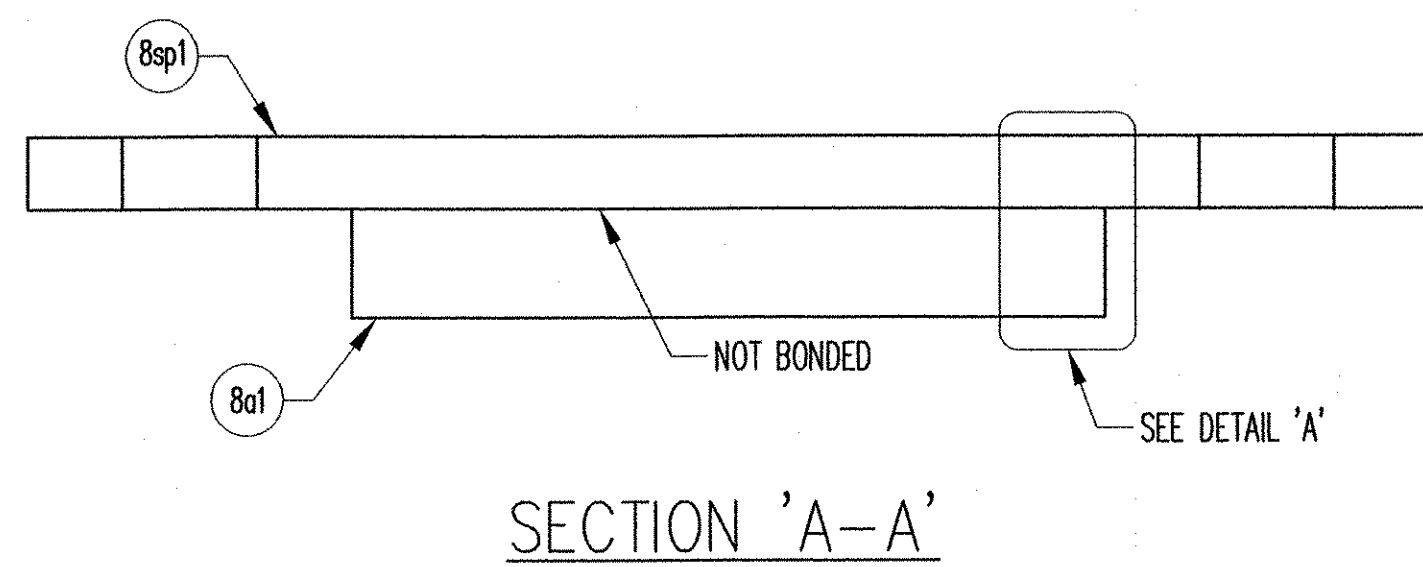
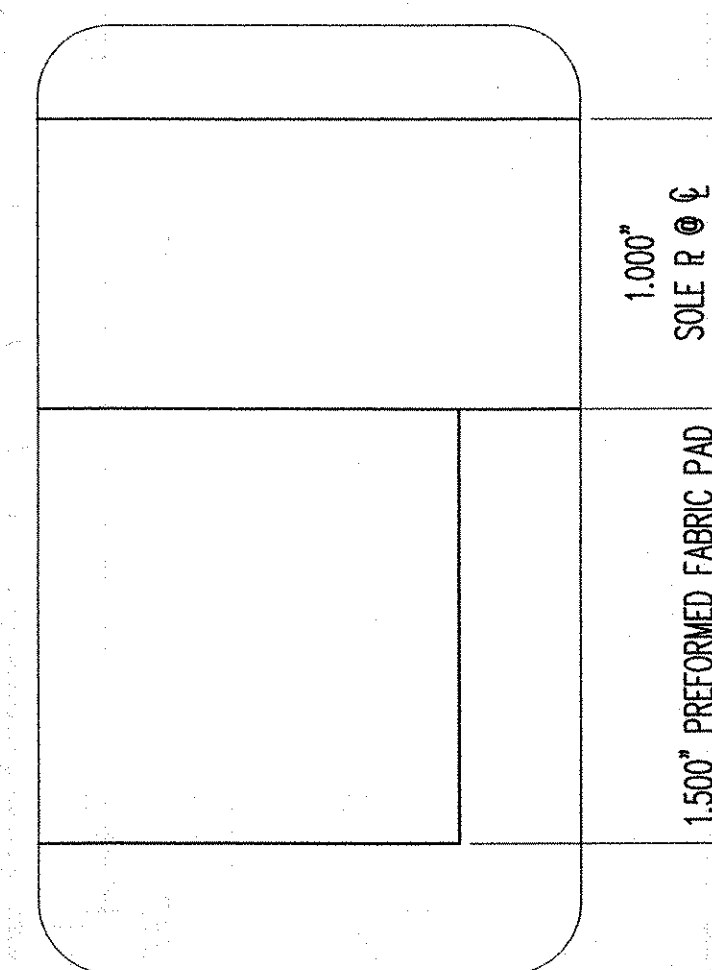


PLAN VIEW
FIXED PREFORMED FABRIC BEARING
(1) REQ'D @ ABUT. 1, BEAM C



SWEDGE ROD DETAIL



DETAIL 'A'

MK	QTY.	DESCRIPTION	MATERIAL	LENGTH	REMARKS	PART NO.
8A	1	FABRIC BEARING				
8a1	1	1.500" X 10.500"	AASHTO 18.4.9.1	8.000"		
8sp1	1	1.050" X 19.500"	A709 GR 36	10.000"	EPOXY BOND TO SOLE PLATE; A123-HDG	
8B	2	SWEDGE ROD				
8b1	2	1.500" X 21.000" SWEDGED ROD	A449		7" THREADS, 12" SWEDGE; A153-HDG	
8C	2	HEAVY HEX NUT				
8c1	2	1.500" HEX NUT	A563-DH OR A194-2H		A153-HDG	
8D	2	WASHER PLATE				
8d1	2	0.375" X 3.000"	A36	3.000"	1.625" DIA. HOLE @ CENTER; A123-HDG	

NOTE: ALL MATERIAL SPECIFICATION DESCRIPTIONS ARE ASTM, UNLESS OTHERWISE NOTED.

SEE SH. GN1 FOR GENERAL NOTES.

RECEIVED
CK'D BY: LAB CK'D BY: _____
FEB 22 2007
RESUBMIT _____ APPROVE: _____
BY: Rfw DATE: 2/20/07

REV.	DESCRIPTION	DATE	DET.	CKD.
△	ADDED NEW SH. FROM SH. 3	2/15/07	DA	NRH
	LOCATION — VT 15 OVER LAMOILLE RIVER			
	BRIDGE — 20	19368-1106-3	1	OF 24
	PROJECT — BHF 030-2(19)S			
	DESIGNER — URS			
	CUSTOMER — BECK & BELLUCCI, INC.			
	SCALE: N.T.S.	DRAWN BY: DA	CHECKED BY: NRH	DATE: 1/22/07
	DESCRIPTION: PREFORMED FABRIC BEARING	PROJECT NUMBER: 19368	PRODUCT CODE: 1106	RELEASE: 1 SHEET: 08
	LAMOILLE CO., VT			

D.S. BROWN

THE D.S. BROWN COMPANY
300 E. CHERRY STREET
NORTH BALTIMORE, OHIO 45872
419.257.3561
FAX: 419.257.0332
WWW.DSBROWN.COM