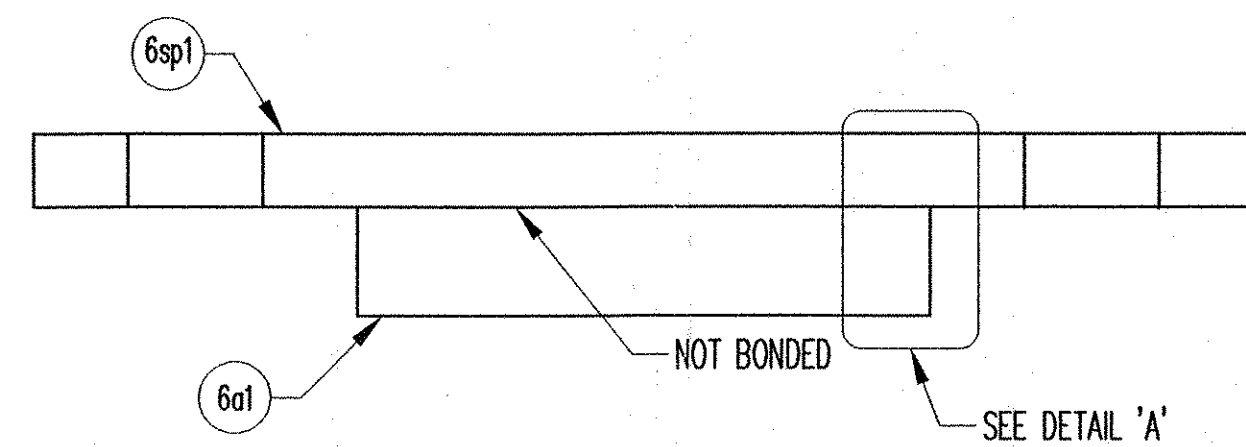
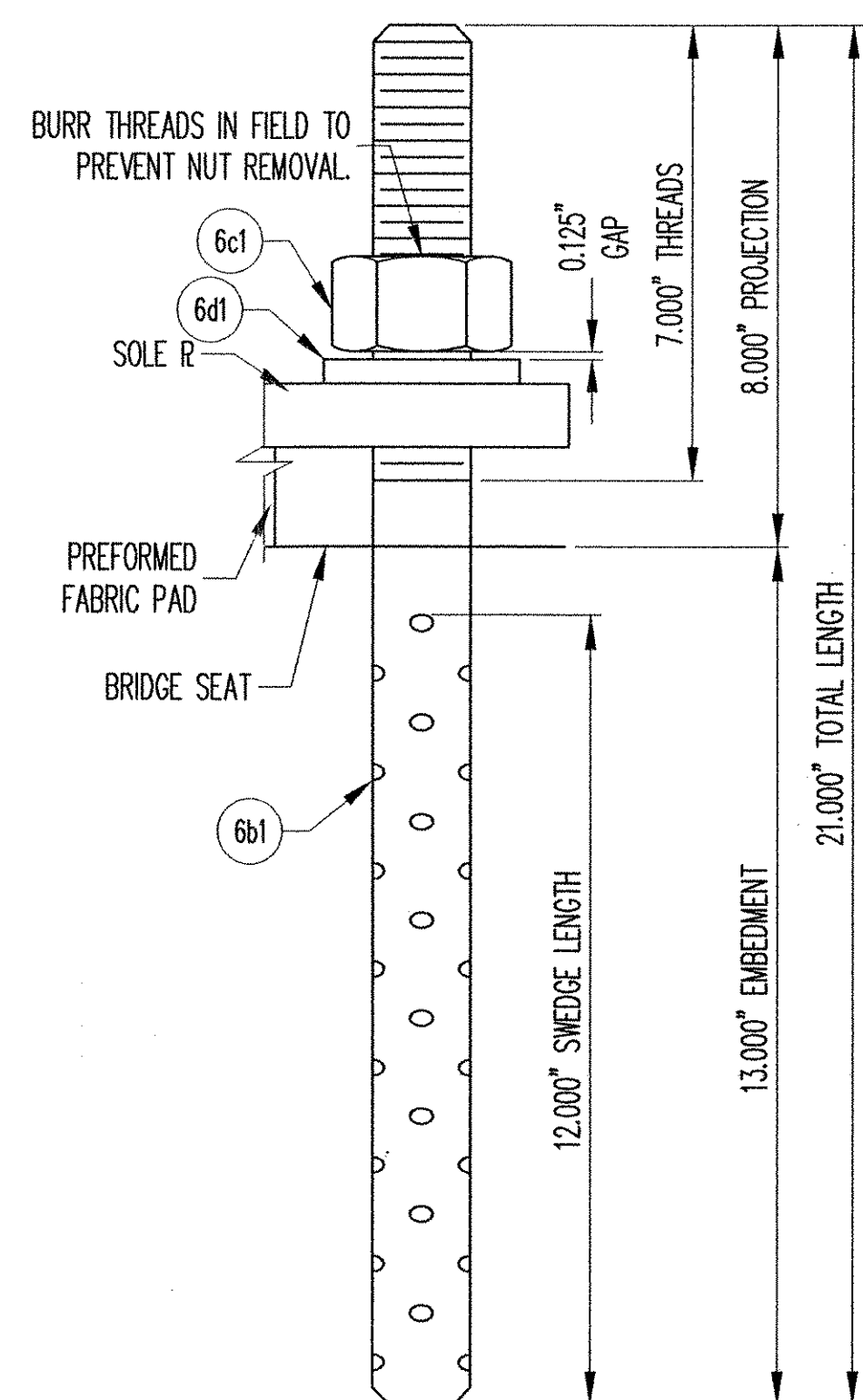


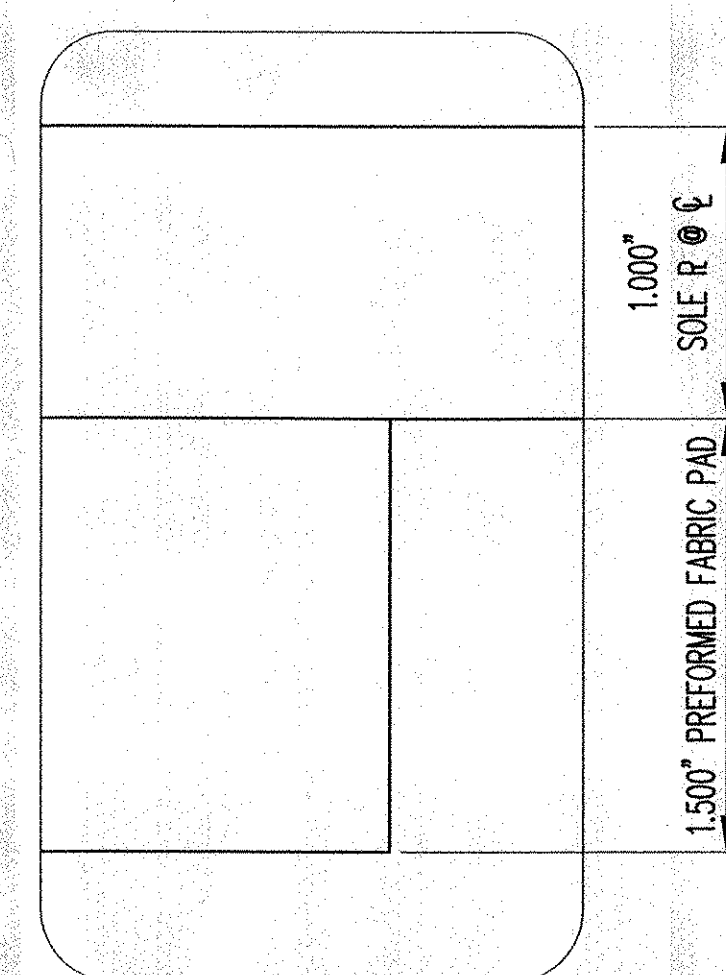
PLAN VIEW  
FIXED PREFORMED FABRIC BEARING  
(1) REQ'D @ ABUT. 1, BEAM A



SECTION 'A-A'



SWEDGE ROD DETAIL



DETAIL 'A'

MK	QTY.	DESCRIPTION	MATERIAL	LENGTH	REMARKS	PART NO.
6A	1	FABRIC BEARING				
6a1	1	1.500" X 8.000"	AASHTO 18.4.9.1	8.000"		
6sp1	1	1.055" X 17.000"	A709 GR 36	11.000"	EPOXY BOND TO SOLE PLATE; A123-HDG	
6B	2	SWEDGE ROD				
6b1	2	1.500" X 21.000" SWIDGED ROD	A449		7" THREADS, 12" SWEDGE; A153-HDG	
6C	2	HEAVY HEX NUT				
6c1	2	1.500" Ø HEX NUT	A563-DH OR A194-2H		A153-HDG	
6D	2	WASHER PLATE				
6d1	2	0.375" X 3.000"	A36	3.000"	1.625" DIA. HOLE @ CENTER; A123-HDG	

NOTE: ALL MATERIAL SPECIFICATION DESCRIPTIONS ARE ASTM, UNLESS OTHERWISE NOTED.

RECEIVED  
 OK'D BY: LBB OK'D BY: \_\_\_\_\_  
 FEB 22 2007  
 RESUBMIT: \_\_\_\_\_ APPROVED: \_\_\_\_\_  
 BY: [Signature] DATE: 2/26/07

SEE SHT. C01 FOR GENERAL NOTES.

REV.	DESCRIPTION	DATE	DET.	CKD.
Δ	ADDED NEW SHT. FROM SHT. 3	2/15/07	DA	NRH

ITEM	QUANTITY
19368-1106-3	1 OF 24
-	-
-	-
-	-
-	-
-	-
-	-
-	-
-	-
-	-

 THE D.S. BROWN COMPANY 300 E. CHERRY STREET NORTH BALTIMORE, OHIO 45872 419.257.3561 FAX: 419.257.0332 WWW.DSBROWN.COM	LOCATION — VT 15 OVER LAMOILLE RIVER BRIDGE — 20 PROJECT — BHF 030-2(19)S DESIGNER — URS CUSTOMER — BECK & BELLUCCI, INC.	SCALE: N.T.S. DRAWN BY: DA CHECKED BY: NRH DATE: 1/22/07 PROJECT NUMBER: 19368 PRODUCT CODE: 1106 RELEASE: 1 SHEET: 06
---	---	---