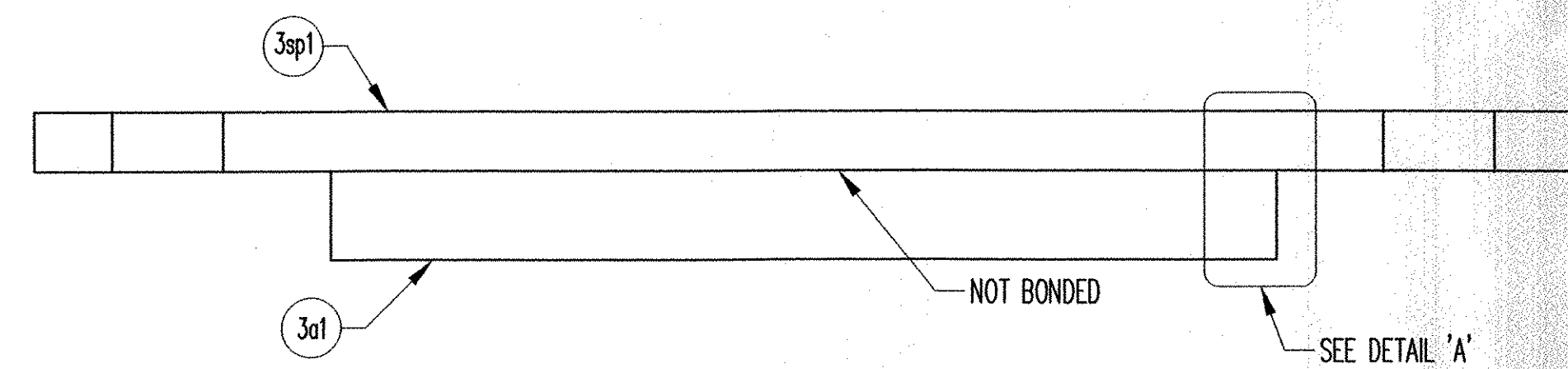
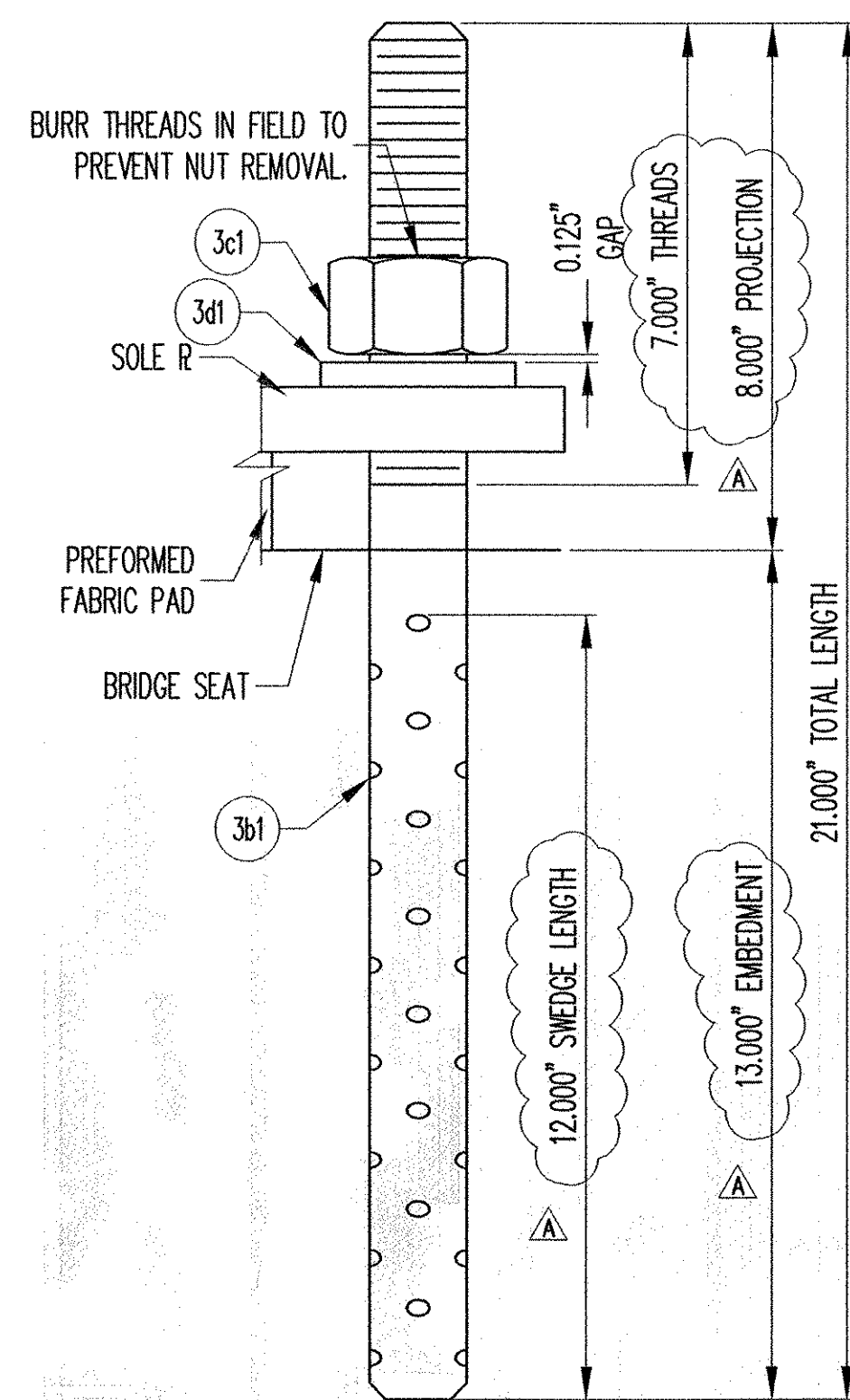


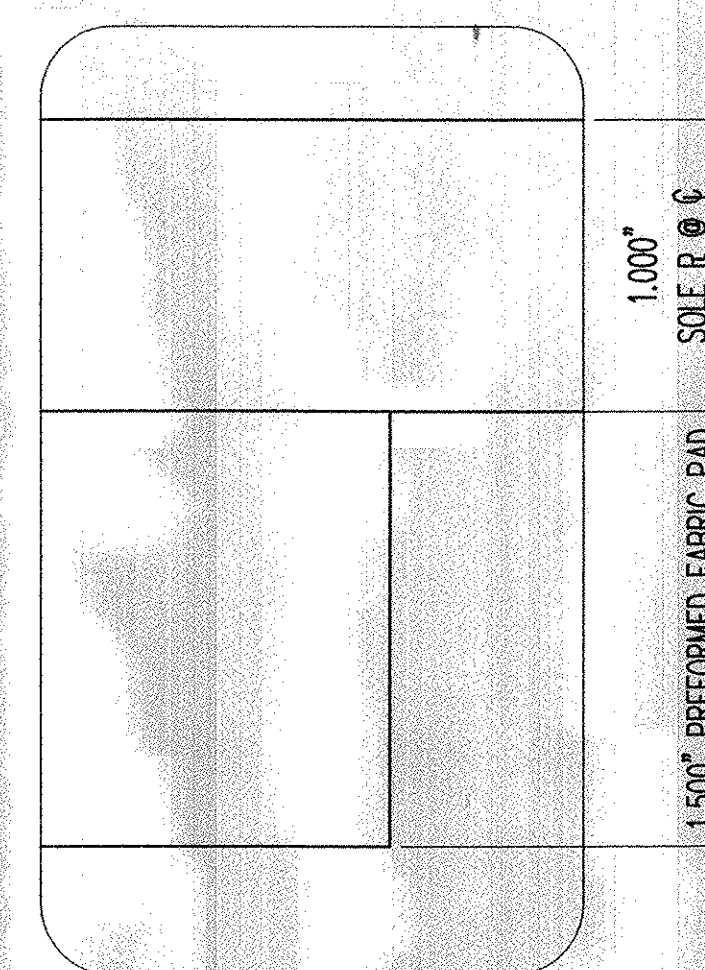
PLAN VIEW
FIXED PREFORMED FABRIC BEARING
▲ (1) REQ'D @ ABUT. 1, BEAM 3
(7) REQ'D @ SPAN 4, PIER 3
(7) REQ'D @ ABUT. 2



SECTION 'A-A'



SWEDGE ROD DETAIL



DETAIL 'A'

MK	QTY.	DESCRIPTION	MATERIAL	LENGTH	REMARKS	PART NO.
▲ 3A	(15)	FABRIC BEARING				
3a1	15	7.500" X 16.000"	AASHTO 18.4.9.1	8.000"		
3sp1	15	1.065" X 26.000"	A709 GR 36	(12.000")	EPOXY BOND TO SOLE PLATE; A123-HDG	
3B	(30)	SWEDGE ROD				
3b1	30	1.500" Ø X 21.000" SWEDGED ROD	A449		(7" THREADS, 12" SWEDGE); A153-HDG	
3C	(30)	HEAVY HEX NUT				
3c1	30	1.500" Ø HEX NUT	A563-DH OR A194-2H		A153-HDG	
3D	(30)	WASHER PLATE				
3d1	30	0.375" X 3.000"	A36	3.000"	1.625" DIA. HOLE @ CENTER; A123-HDG	

NOTE: ALL MATERIAL SPECIFICATION DESCRIPTIONS ARE ASTM, UNLESS OTHERWISE NOTED.

RECEIVED
CK'D BY LBB OK'D BY _____
FEB 22 2007
RESUBMIT _____ APPROVED ✓
BY flw DATE 2/26/07

SEE SHT. CN1 FOR GENERAL NOTES.

REV.	DESCRIPTION	DATE	DET.	CKD.
▲	REV. QTY, SOLE PL. DIMENSION, ANCHOR ROD & BOM	2/15/07	DA	NRH
REV.	DESCRIPTION	DATE	DET.	CKD.
	LOCATION — VT 15 OVER LAMOILLE RIVER		ITEM	QUANTITY
	BRIDGE — 20		19368-1106-3	(15 OF 24)
	PROJECT — BHF 030-2(19)S			
	DESIGNER — URS			
	CUSTOMER — BECK & BELLUCCI, INC.			
DESCRIPTION:	PREFORMED FABRIC BEARING	SCALE: N.T.S.	DRAWN BY: DA	CHECKED BY: NRH
	LAMOILLE CO., VT	DATE: 1/22/07	RELEASE	SHEET: 03
		PRODUCT NUMBER: 19368	PRODUCT CODE: 1106	RELEASE: 1



THE D.S. BROWN COMPANY
300 E. CHERRY STREET
NORTH BALTIMORE, OHIO 45872
419.257.3561
FAX: 419.257.0332
WWW.DSBROWN.COM

