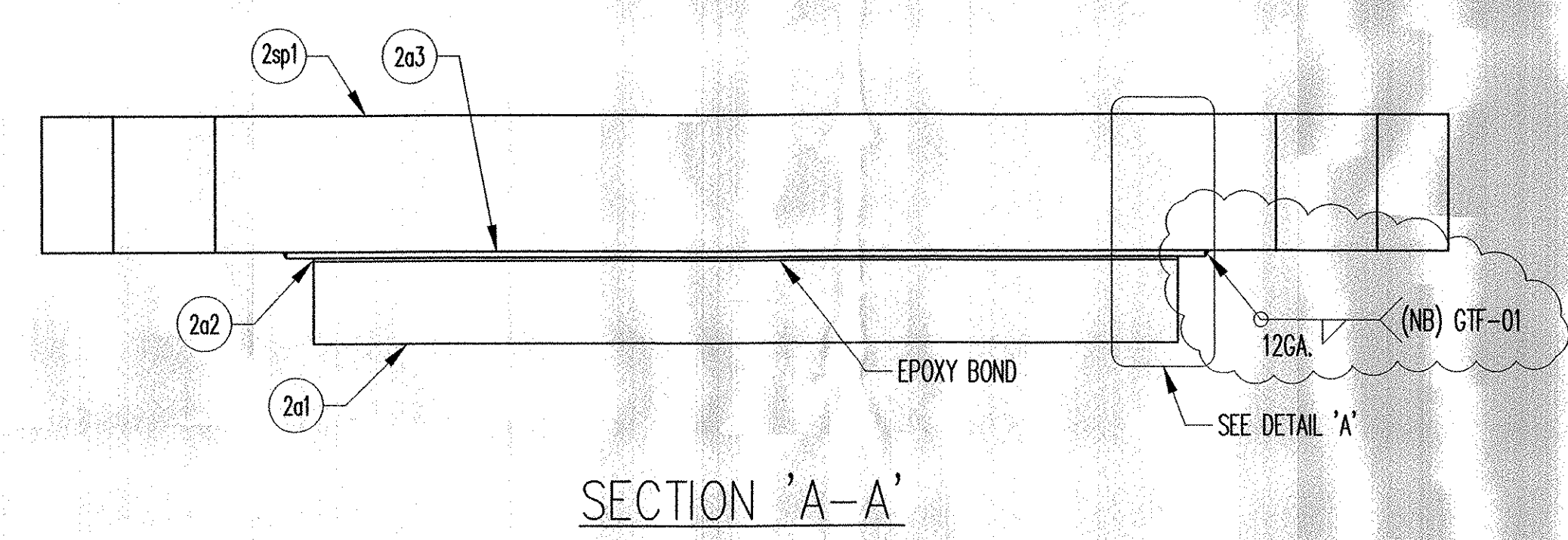
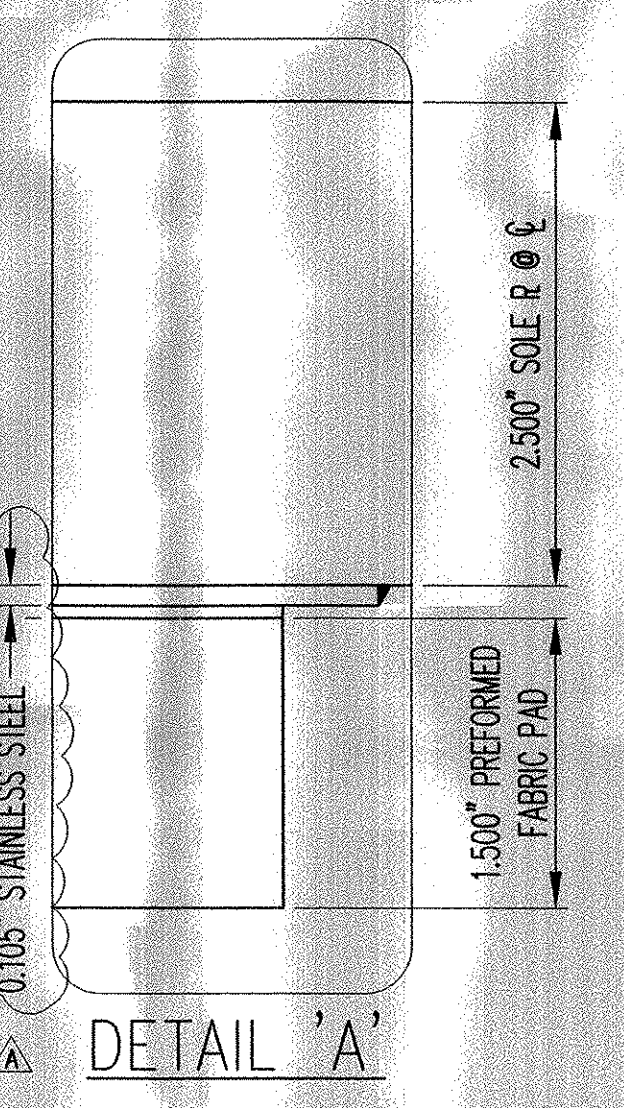
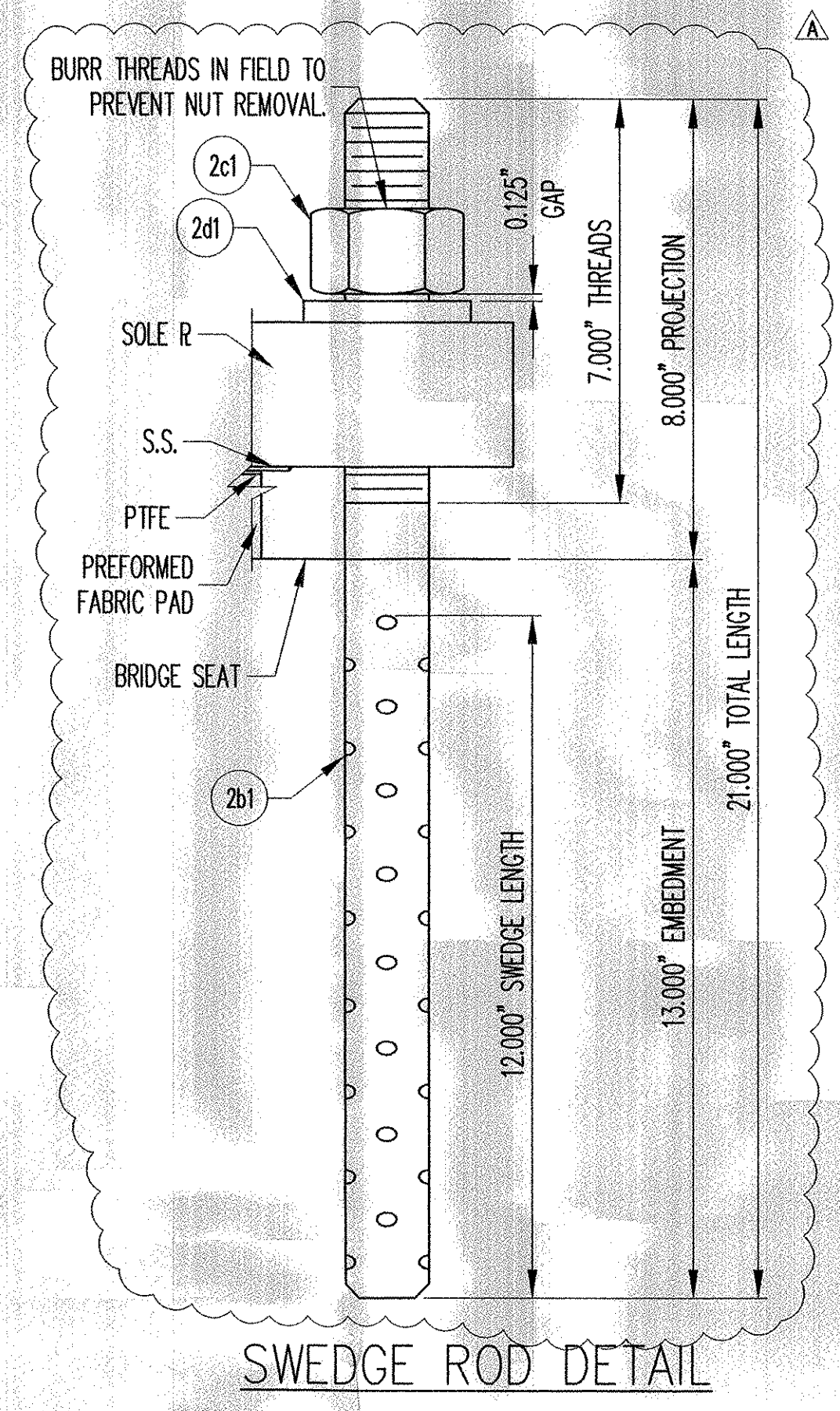


PLAN VIEW  
SLIDING PREFORMED FABRIC BEARING  
(1) REQ'D @ SPAN 1, PIER 1, BEAM 1



MK	QTY.	DESCRIPTION	MATERIAL	LENGTH	REMARKS	PART NO.
2A	1	FABRIC BEARING				
2a1	1	1.500" X 16.000"	AASHTO 18.4.9.1	8.000"		
2a2	1	0.063" X 16.000"	PTFE	8.000"	PURE VIRGIN UNFILLED	
2a3	1	1/2 GA. X 17.000"	A240 1304, #8 & 2B	13.500"	PLAIN	
2sp1	1	2.570" X 26.000"	A709 GR 36	14.000"	A123-HDG	
2B	2	SWEDGE ROD				
2b1	2	1.500" X 21.000" SWEDGED ROD	A449		17" THREADS, 12" SWEDGE, A153-HDG	
2C	2	HEAVY HEX NUT				
2c1	2	1.500" Ø HEX NUT	A563-DH OR A194-2H		A153-HDG	
2D	2	WASHER PLATE				
2d1	2	0.375" X 3.000"	A36	3.000"	1.625" DIA. HOLE @ CENTER, A123-HDG	

NOTE: ALL MATERIAL SPECIFICATION DESCRIPTIONS ARE ASTM, UNLESS OTHERWISE NOTED.

LOAD TABLE

LOAD DATA	
DEAD LOAD REACTION (KIPS)	32.8
LIVE LOAD REACTION (KIPS)	58.0
TOTAL LOAD REACTION (KIPS)	90.8

RECEIVED  
CK'D BY LBB OK'D BY \_\_\_\_\_  
FEB 22 2007  
RESUBMIT \_\_\_\_\_ APPROVED \_\_\_\_\_  
BY SKW DATE 2/24/07

SEE SHT. GN1 FOR GENERAL NOTES.

REV.	DESCRIPTION	DATE	DET.	CKD.	QUANTITY
Δ	REV. QTY, S.S. THICKNESS, ANCHOR ROD & BOM	2/15/07	DA	NRH	
	LOCATION — VT 15 OVER LAMOILLE RIVER				
	BRIDGE — 20				
	PROJECT — BHF 030-2(19)S				
	DESIGNER — URS				
	CUSTOMER — BECK & BELLUCCI, INC.				

**D.S. BROWN**  
THE D.S. BROWN COMPANY  
300 E. CHERRY STREET  
NORTH BALTIMORE, OHIO 45872  
419.257.3561  
FAX: 419.257.0332  
WWW.DSBROWN.COM

DESCRIPTION	SCALE	DRWN BY	CHKD BY	DATE	SHEET
PREFORMED FABRIC BEARING LAMOILLE CO., VT	N.T.S.	DA	NRH	1/22/07	02
PROJECT NUMBER	19368	PRODUCT CODE	1106	RELEASE	1