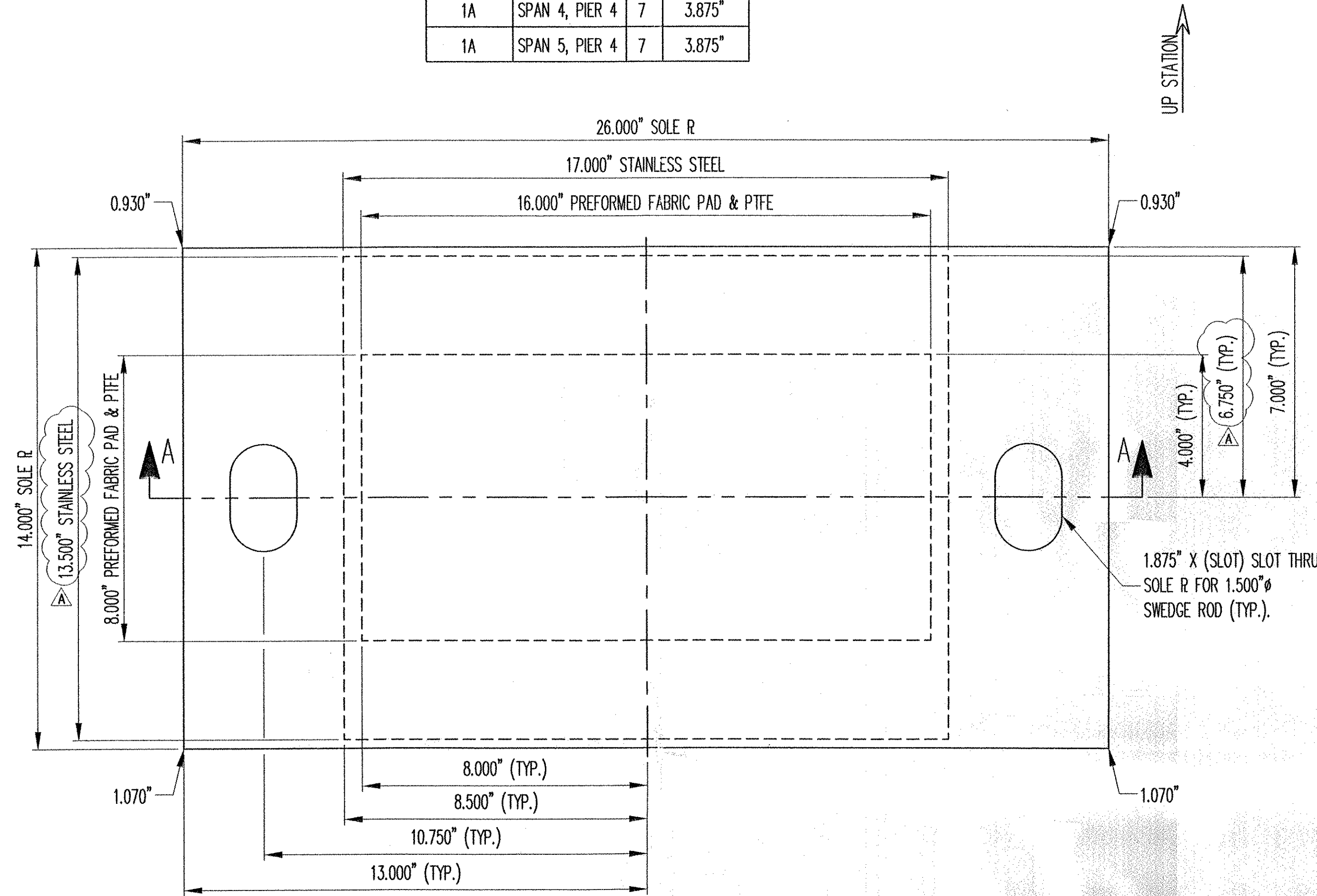


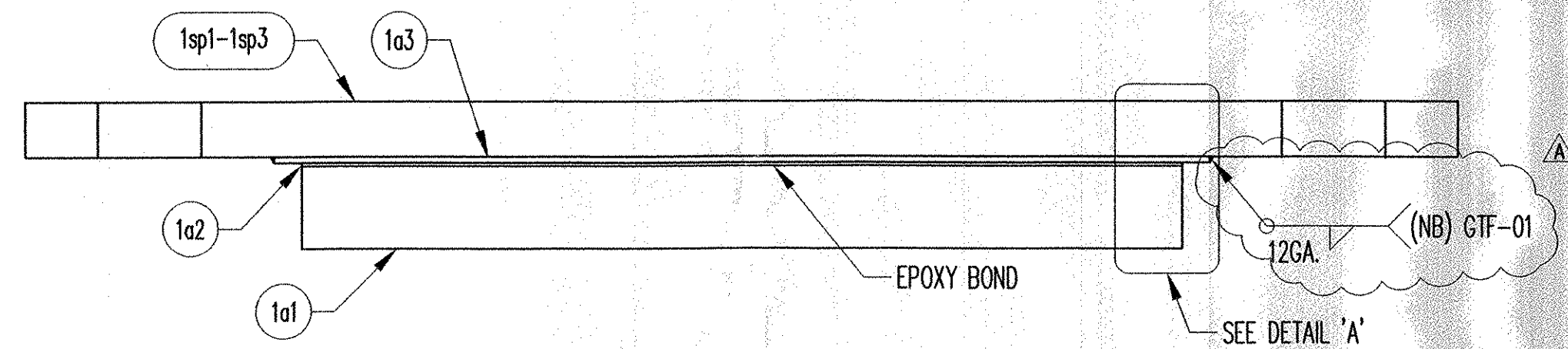
SLOTTED HOLE SCHEDULE

ASSM MARK	LOCATION	QTY	SLOTTED HOLE SLOT
1A	SPAN 2, PIER 1	7	3.875"
1F	SPAN 2, PIER 2	7	5.125"
1F	SPAN 3, PIER 2	7	5.125"
1G	SPAN 3, PIER 3	7	7.125"
1A	SPAN 4, PIER 4	7	3.875"
1A	SPAN 5, PIER 4	7	3.875"

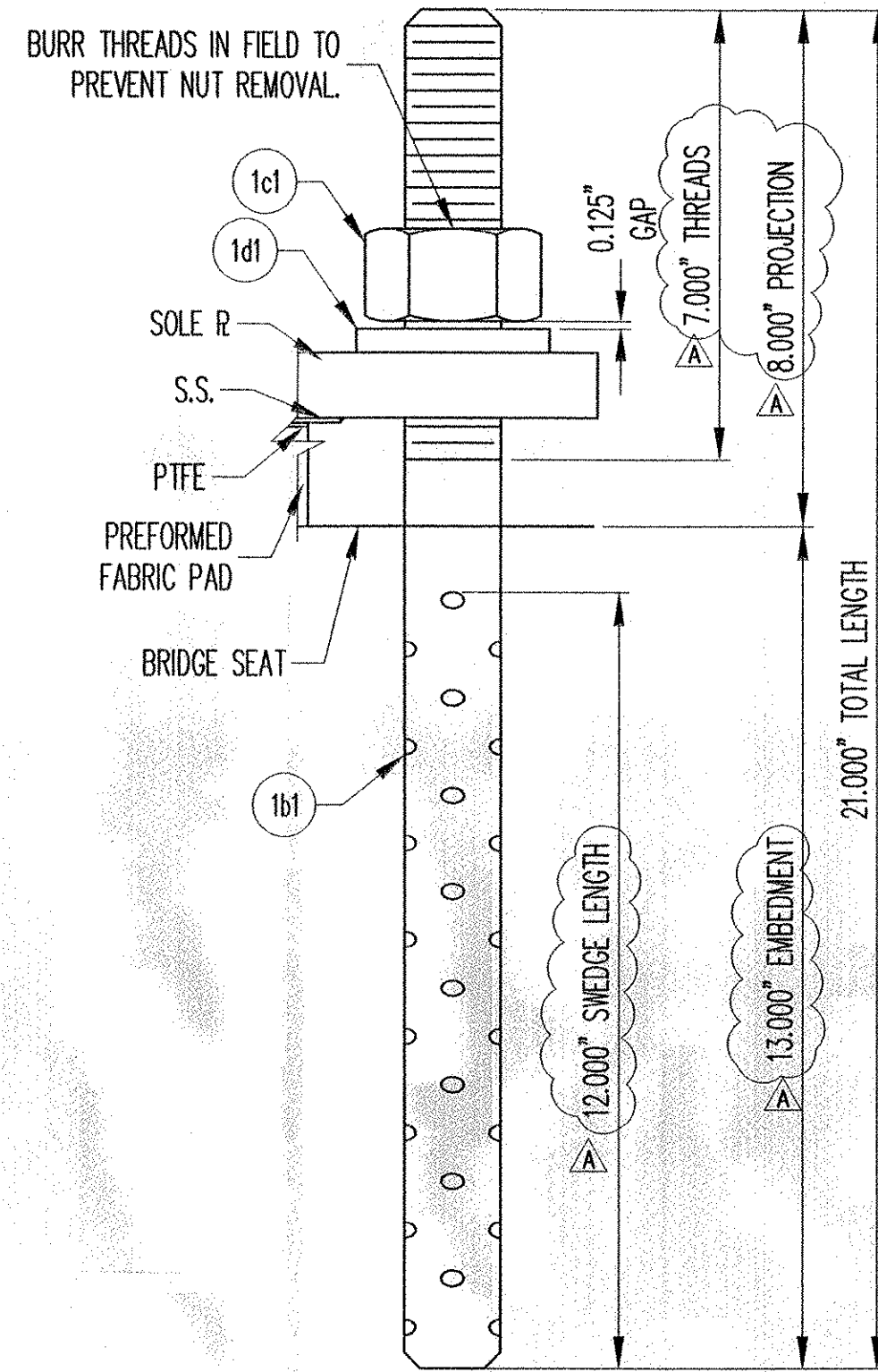


PLAN VIEW

- SLIDING PREFORMED FABRIC BEARING
- (7) REQ'D @ SPAN 2, PIER 1
 - (7) REQ'D @ SPAN 2, PIER 2
 - (7) REQ'D @ SPAN 3, PIER 2
 - (7) REQ'D @ SPAN 3, PIER 3
 - (7) REQ'D @ SPAN 4, PIER 4
 - (7) REQ'D @ SPAN 5, PIER 4



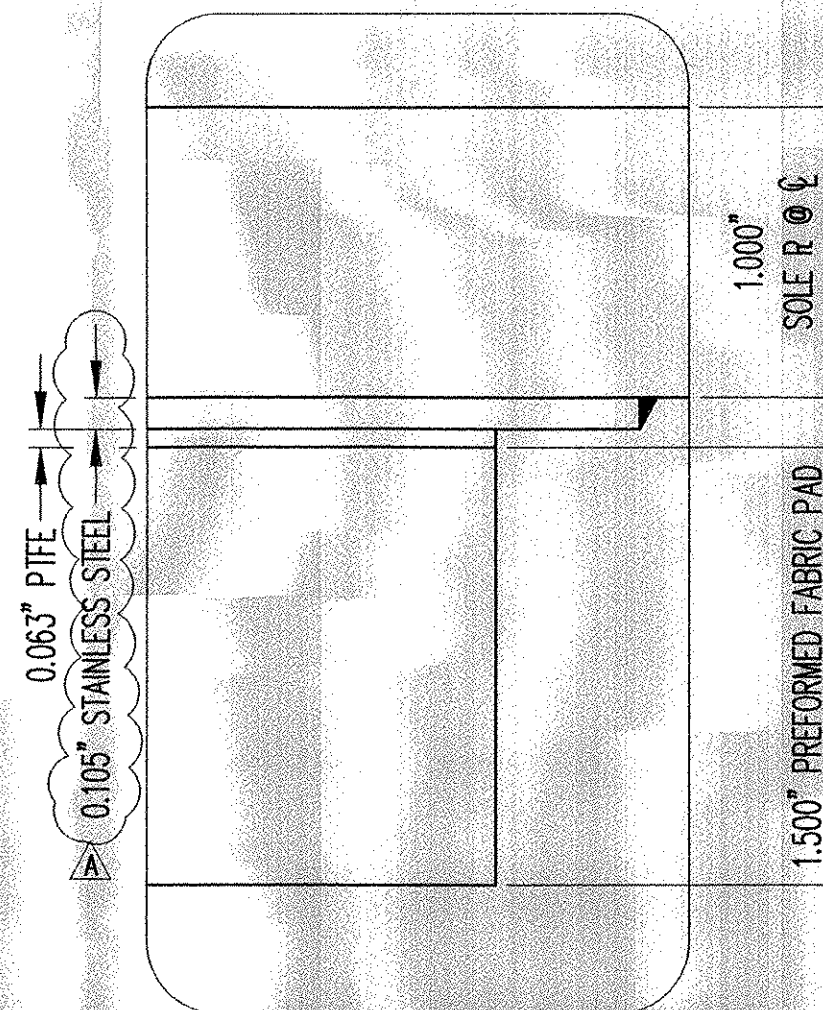
SECTION 'A-A'



SWEDGE ROD DETAIL

LOAD TABLE

LOAD DATA	
DEAD LOAD REACTION (KIPS)	56.6
LIVE LOAD REACTION (KIPS)	60.1
TOTAL LOAD REACTION (KIPS)	116.7



DETAIL 'A'

MK	QTY	DESCRIPTION	MATERIAL	LENGTH	REMARKS	PART NO.
1A	21	FABRIC BEARING				
1a1	21	1.500" X 16.000"	AASHTO 18.4.9.	8.000"		
1a2	21	0.063" X 16.000"	PTFE	8.000"	PURE VIRGIN UNFILLED	
1a3	21	(T2 GA.) X 17.000"	A240 1304, #8 & 2B	(13.500")	PLAIN	
1sp1	21	1.070" X 26.000"	A709 GR 36	14.000"	A123-HDG	
1B	84	SWEDGE ROD				
1b1	84	1.500" X 21.000" SWEDGED ROD	A449		7" THREADS, 12" SWEDGE; A153-HDG	
1C	84	HEAVY HEX NUT				
1c1	84	1.500" HEX NUT	A563-DH OR A194-2H		A153-HDG	
1D	84	WASHER PLATE				
1d1	84	0.375" X 3.000"	A36	3.000"	1.625" DIA. HOLE @ CENTER; A123-HDG	
1F	14	FABRIC BEARING				
1a1	14	1.500" X 16.000"	AASHTO 18.4.9.	8.000"		
1a2	14	0.063" X 16.000"	PTFE	8.000"	PURE VIRGIN UNFILLED	
1a3	14	(T2 GA.) X 17.000"	A240 1304, #8 & 2B	(13.500")	PLAIN	
1sp2	14	1.070" X 26.000"	A709 GR 36	14.000"	A123-HDG	
1G	7	FABRIC BEARING				
1a1	7	1.500" X 16.000"	AASHTO 18.4.9.	8.000"		
1a2	7	0.063" X 16.000"	PTFE	8.000"	PURE VIRGIN UNFILLED	
1a3	7	(T2 GA.) X 17.000"	A240 1304, #8 & 2B	(13.500")	PLAIN	
1sp3	7	1.070" X 26.000"	A709 GR 36	14.000"	A123-HDG	

NOTE: ALL MATERIAL SPECIFICATION DESCRIPTIONS ARE ASTM, UNLESS OTHERWISE NOTED.

RECEIVED
 CK'D BY: *LB8* CK'D BY: _____
 FEB 22 2007
 RESUBMIT _____ APPROVED _____
 BY: *FEW* DATE: *2/26/07*

SEE SHT. CN1 FOR GENERAL NOTES.

REV.	DESCRIPTION	DATE	DET.	CKD.
Δ	REV. S.S. THICKNESS, ANCHOR BOLT & BOM	2/15/07	DA	NRH
	LOCATION — VT 15 OVER LAMOILLE RIVER		ITEM	QUANTITY
	BRIDGE — 20		19368-1106-1	42 OF 42
	PROJECT — BHF 030-2(19)S			
	DESIGNER — URS			
	CUSTOMER — BECK & BELLUCCI, INC.			
	DESCRIPTION: PREFORMED FABRIC BEARING	SCALE: N.T.S.	DRAWN BY: DA	CHECKED BY: NRH
	LAMOILLE CO., VT	PROJECT NUMBER: 19368	PRODUCT CODE: 1106	DATE: 1/22/07
		RELEASE: 1	SHEET: 01	

D.S. BROWN

THE D.S. BROWN COMPANY
 300 E. CHERRY STREET
 NORTH BALTIMORE, OHIO 45872
 419.257.3561
 FAX: 419.257.0332
 WWW.DSBROWN.COM