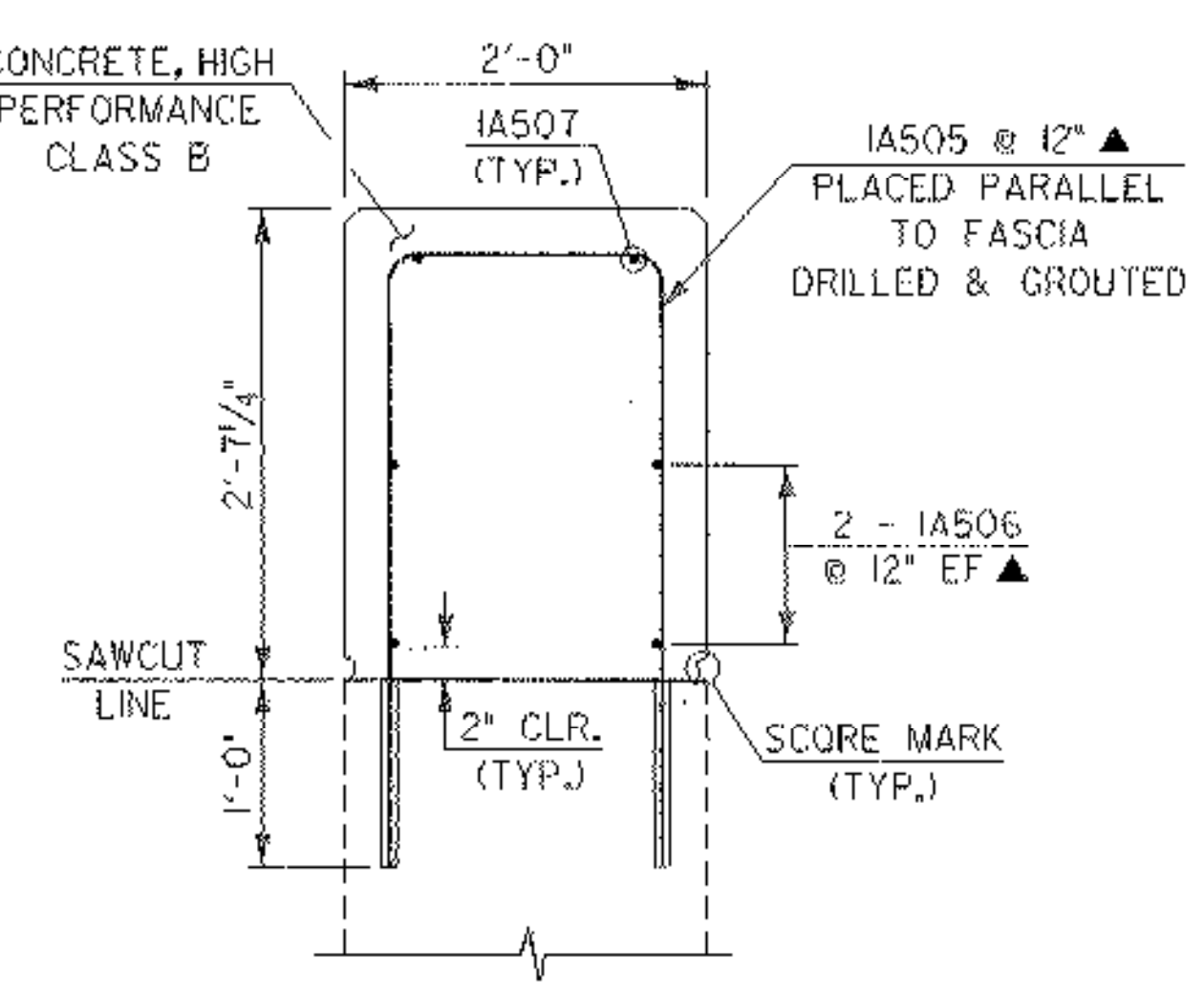
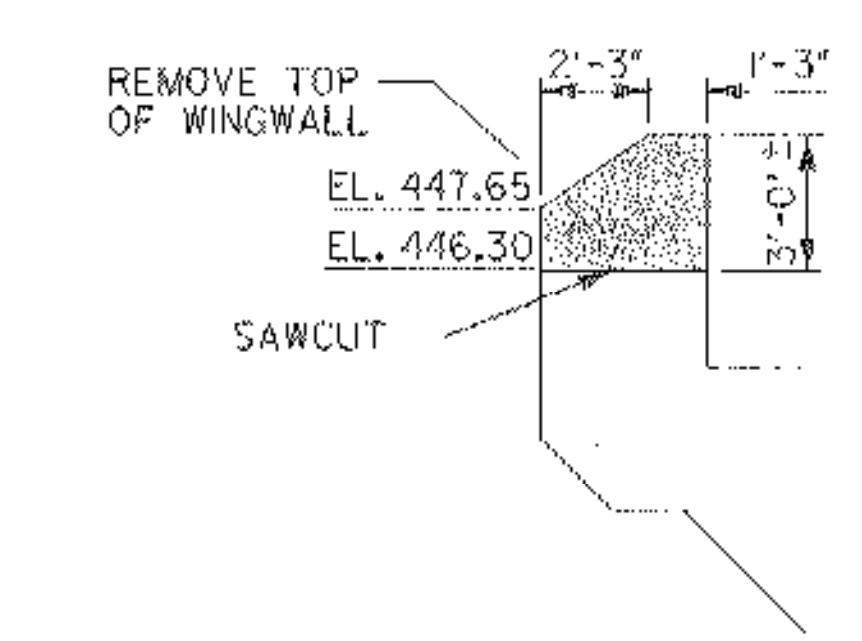


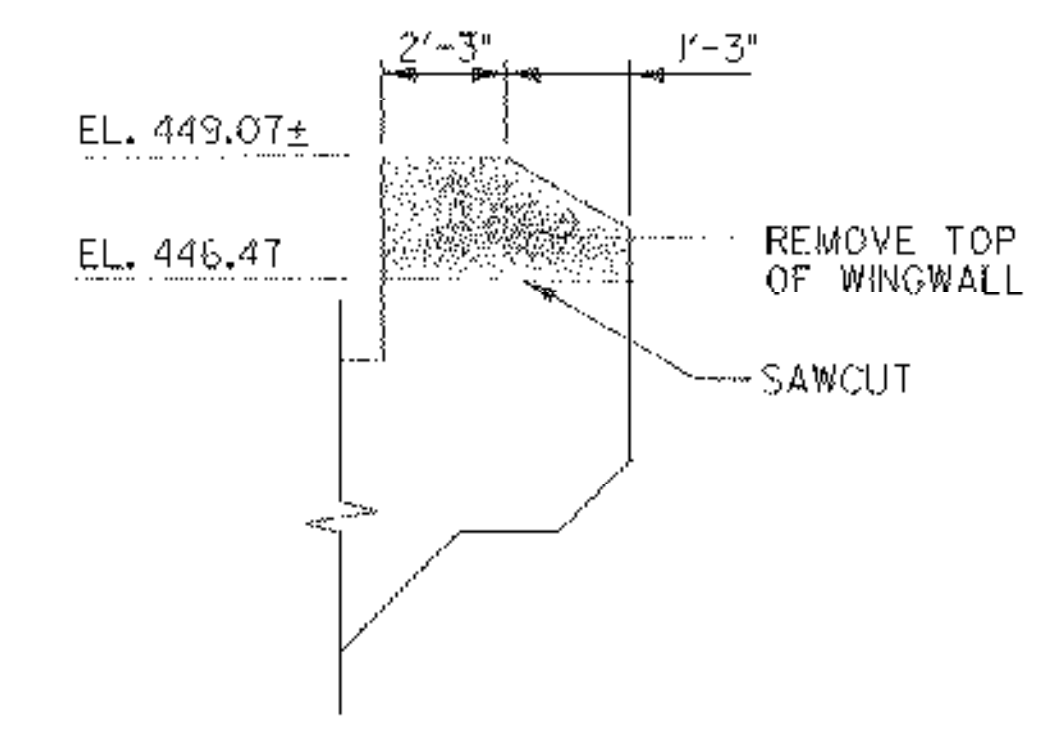
SECTION B-B
SCALE: 1" = 1'-0"



SECTION C-C
SCALE: 1" = 1'-0"

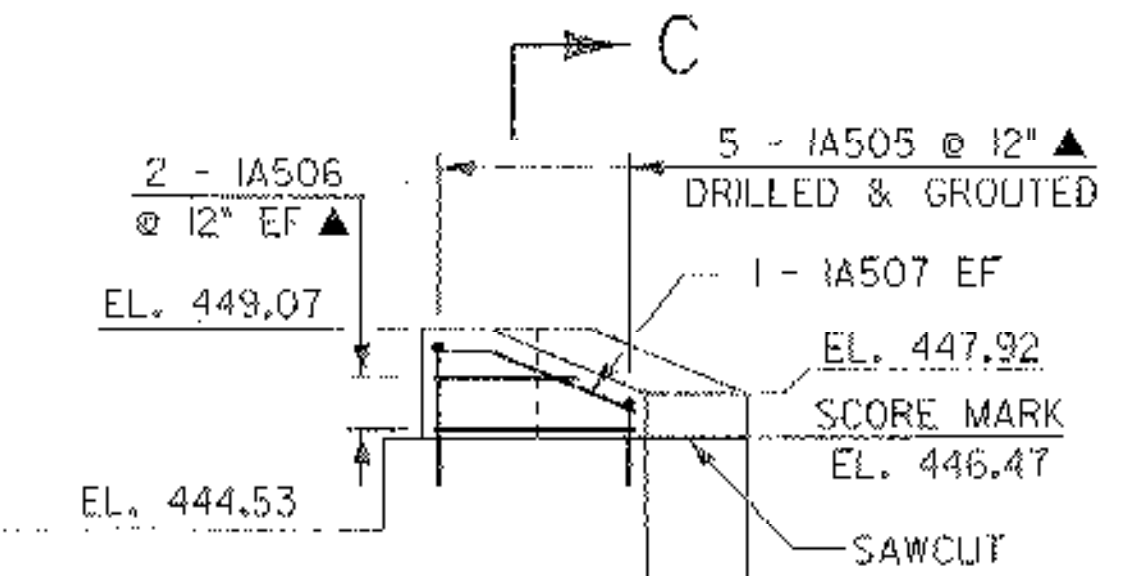
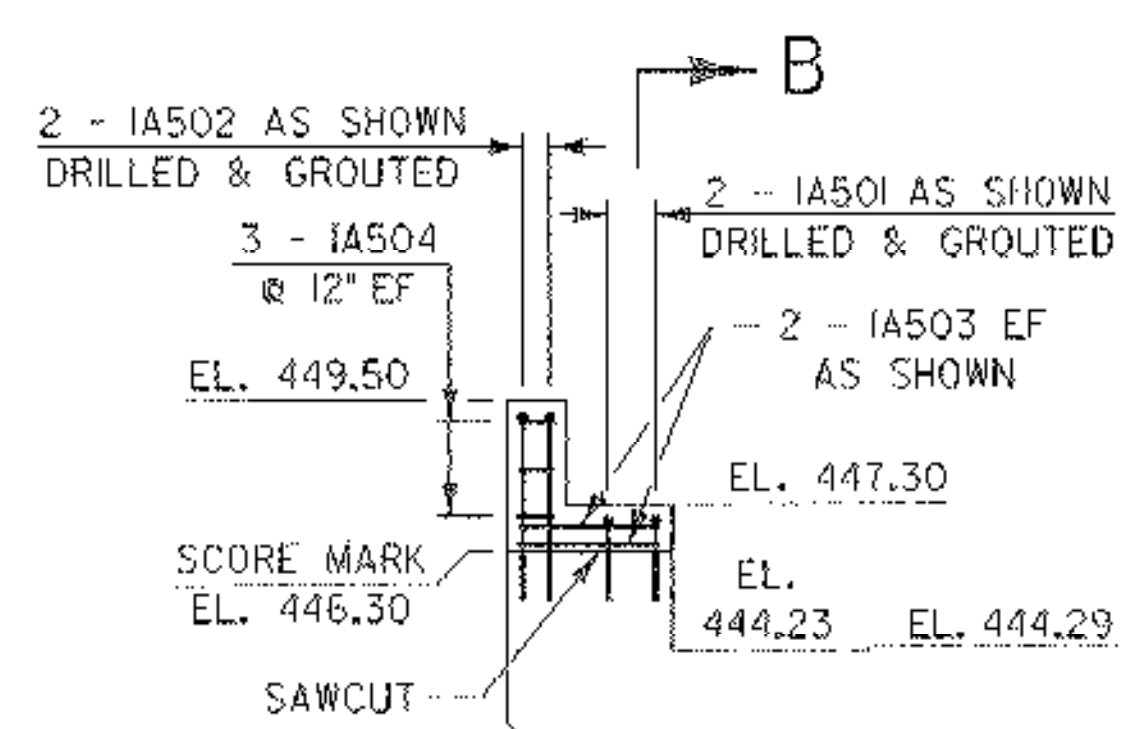


EXISTING VIEW D-D
SCALE: 1/4" = 1'-0"



EXISTING VIEW E-E
SCALE: 1/4" = 1'-0"

ABUTMENT NO. 1 PLAN
SCALE: 1/4" = 1'-0"



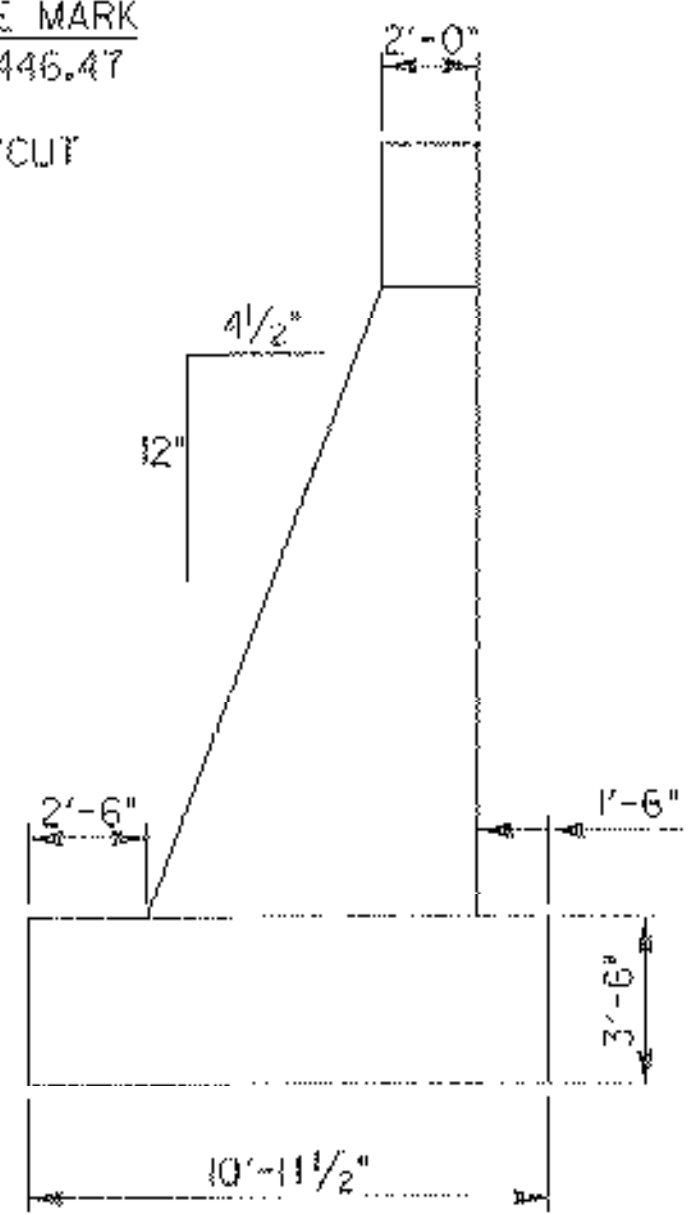
NOTES

1. THE COST OF WINGWALL REMOVAL, INCLUDING SAWCUTTING, SHALL BE INCLUDED IN THE PRICE FOR ITEM 529.20, "PARTIAL REMOVAL OF STRUCTURE".
2. FOR SUBSTRUCTURE REPAIR DETAILS, SEE SHEET 5I.
3. EXISTING PAD ELEVATIONS ARE BASED ON FIELD SURVEY.
4. THE DEFECTIVE AREAS INDICATED ARE APPROXIMATE. THE EXACT AREAS AND REPAIR TYPE ARE TO BE DETERMINED BY THE RESIDENT ENGINEER.
5. EF = EACH FACE
6. ▲ = CUT TO FIT IN FIELD
7. 3" CLR. UNLESS OTHERWISE NOTED.
8. DOWELS SHALL BE DRILLED AND GROUDED A MINIMUM OF 12" INTO EXISTING CONCRETE.

ABUTMENT NO. 1 ELEVATION
SCALE: 1/4" = 1'-0"

KEY

- PARTIAL REMOVAL OF STRUCTURE
- PROPOSED WINGWALL CAP



SECTION A-A
SCALE: 1/4" = 1'-0"

STATE OF VERMONT AGENCY OF TRANSPORTATION			
Town Of	CAMBRIDGE	Bridge No.	20
Highway No.	VT 15	Log Sta.	
VT 15 OVER LAMOILLE RIVER			
ABUTMENT I PLAN & ELEVATION			
Designed By	E.A. HARTWELL	Drawn By	R.A. ROSS
Checked By	R. SACCHI	Bridge Design Supervisor	R. R. WHITCOMB
PROJECT	CAMBRIDGE	PROJECT NO.	BHF 030-2191S
LG.C. Info.		zb308ab1.dgn	
Bridge Sheet No.		Sheet	45 of 68