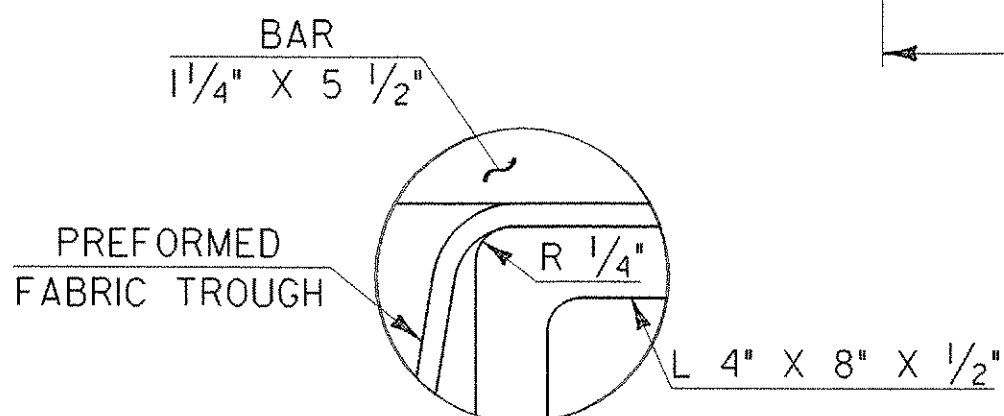
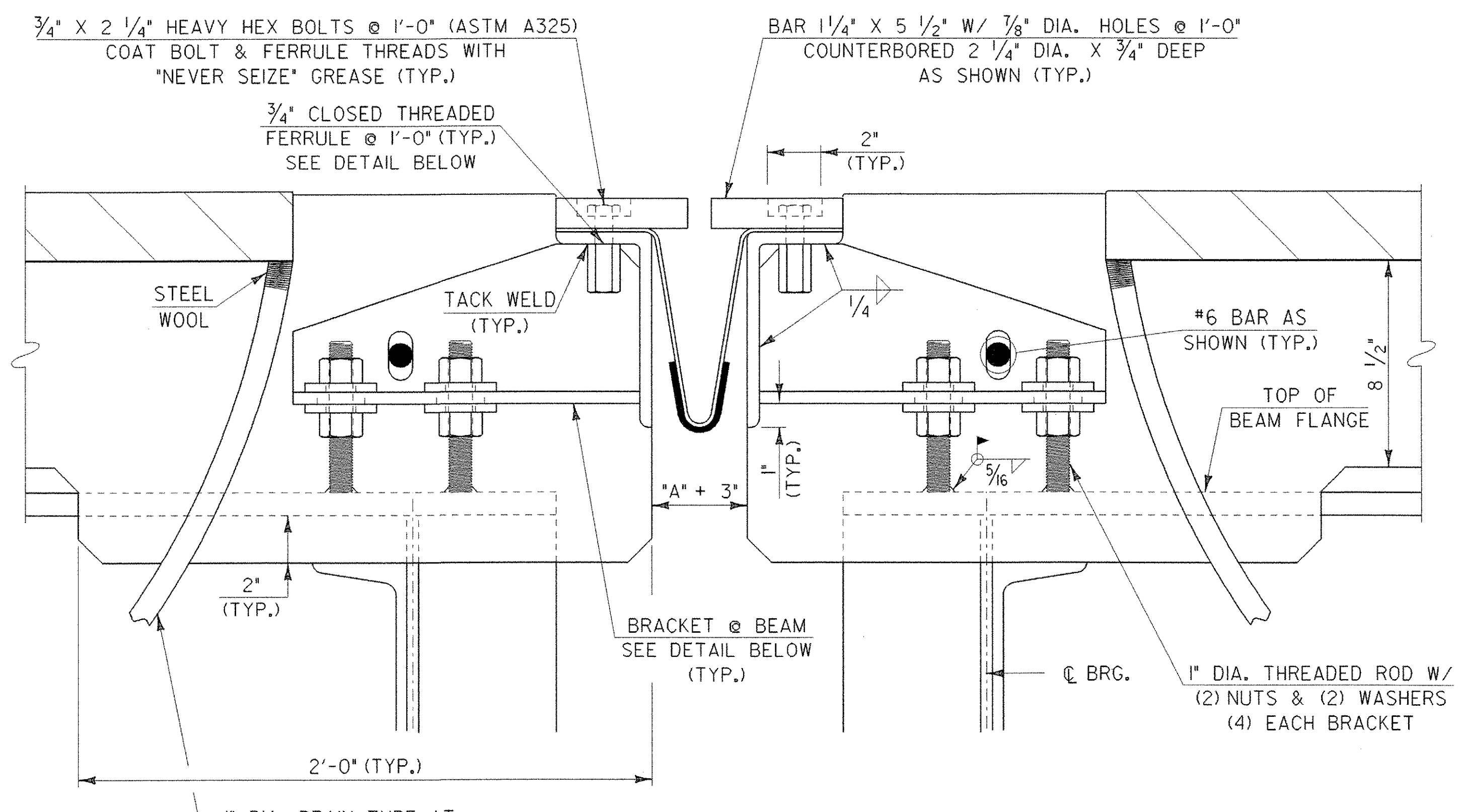


TYPICAL SECTION BETWEEN BEAMS
SCALE: 3" = 1'- 0" (NORMAL TO ϕ BEARING)



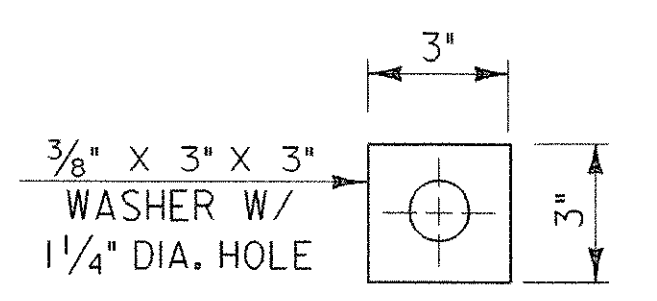
DETAIL "A"
N.T.S.



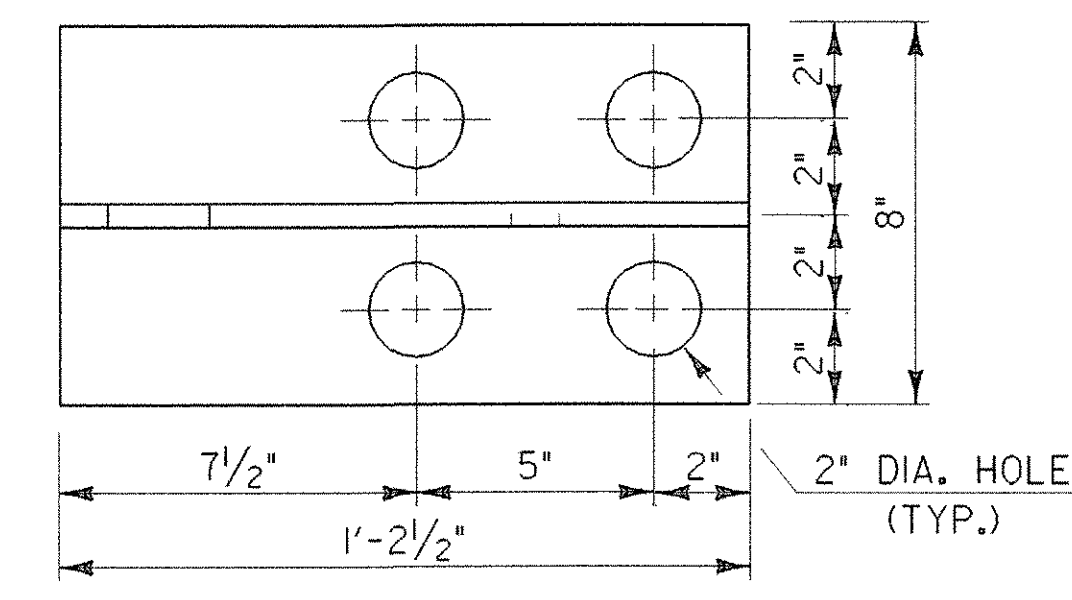
TYPICAL SECTION AT BEAMS
SCALE: 3" = 1'- 0" (NORMAL TO ϕ BEARING)

1. DETAILS ON THIS SHEET ARE FOR ITEM 516.10, "BRIDGE EXPANSION JOINT (VERMONT)".
2. PREFORMED FABRIC MATERIAL SHALL BE CONTINUOUS AND SHALL CONFORM TO SUBSECTION 707.07 OF THE STANDARD SPECIFICATIONS.
3. BUTYL RUBBER TAPE SHALL CONFORM TO AASHTO SPECIFICATION M-198, TYPE B.
4. THE FINAL FINISH OF THE EXPANSION DEVICE SHALL BE COVERED DURING THE PLACING OF ADJACENT BRIDGE DECK CONCRETE.
5. ALL STEEL COMPONENTS SHALL BE AASHTO M270 GRADE 36 GALVANIZED OR METALIZED AS PER SUBSECTION 506.15 UNLESS OTHERWISE SPECIFIED. THREADED RODS SHALL BE ASTM A449.
6. THE ITEM "BRIDGE EXPANSION JOINT (VERMONT)" SHALL INCLUDE THE FABRICATION AND ERECTION OF THE COMPLETE JOINT ASSEMBLY INCLUDING ALL STEEL PLATES, BRACKETS, ANGLES, WELDED STUDS OR RODS, PREFORMED FABRIC DRAIN TROUGH MATERIAL AND PLASTIC DRAIN TUBES, BUTYL RUBBER TAPE AND ANY OTHER MISCELLANEOUS MATERIAL NECESSARY TO INSTALL JOINT.
7. COAT CONCRETE CONTACT SURFACES WITH EPOXY BONDING COMPOUND MEETING THE REQUIREMENTS OF SUBSECTION 719.02. PAYMENT SHALL BE INCLUDED IN THE UNIT PRICE BID FOR ITEM 516.10, "BRIDGE EXPANSION JOINT (VERMONT)".
8. FILL COUNTERBORED HOLES WITH HOT POURED JOINT SEALER AFTER BOLT INSTALLATION. PAYMENT FOR THIS WORK SHALL BE INCIDENTAL TO ITEM 516.10, "BRIDGE EXPANSION JOINT (VERMONT)".
9. A 1" DIA. PLASTIC DRAIN TUBE (PER STD. SPEC. 740.01) SHALL BE INSTALLED AS SHOWN AT THE FACE OF CURB/SIDEWALK. THE UPPER END IS TO BE PLUGGED WITH STEEL WOOL AND THE LOWER END IS TO EXTEND BELOW THE BOTTOM OF THE ADJACENT BEAM. THE DRAIN TUBES SHALL BE FASTENED TO THE BEAMS USING A METHOD APPROVED BY THE ENGINEER. PAYMENT FOR THE DRAIN TUBES AND THEIR INSTALLATION SHALL BE INCIDENTAL TO ITEM 501.33, "CONCRETE, HIGH PERFORMANCE CLASS A".

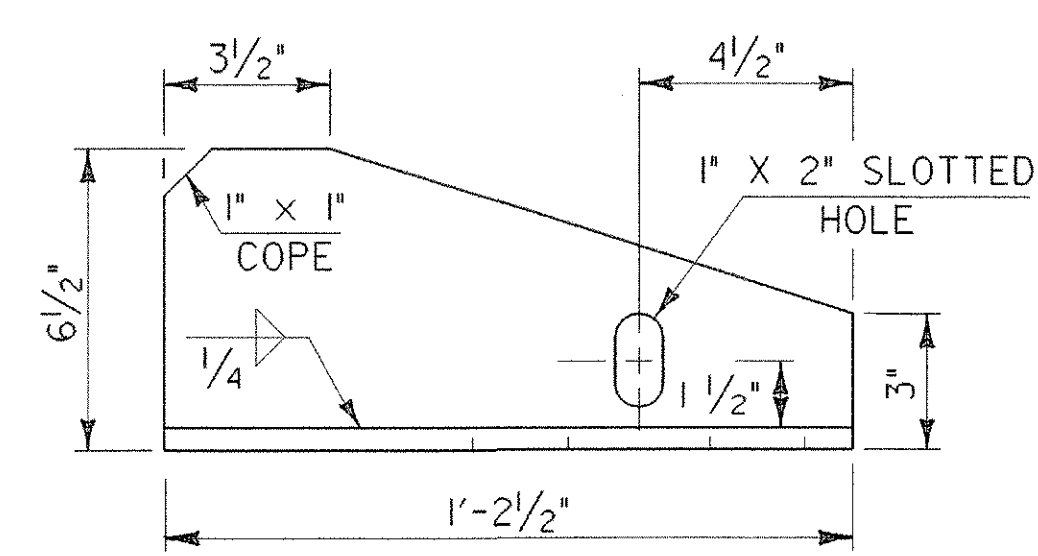
10. A DRIP BEAD OF 1/4" X 7" STRIP OF PREFORMED MATERIAL SHALL BE CEMENTED TO THE BOTTOM OF THE FABRIC TROUGH USING AN ADHESIVE APPROVED BY THE MANUFACTURER. THE DRIP BEAD SHALL BE APPLIED 1" FROM THE LOW END OF THE TROUGH.
11. FABRIC TROUGH SHALL BE THOROUGHLY CLEANED AND FLUSHED AFTER PAVING OPERATION.
12. THE EXPANSION JOINT, EXCLUDING FABRIC, SHALL BE SHOP ASSEMBLED AND SHIPPED IN SECTIONS AS DETAILED SO THAT TRAFFIC MAY BE MAINTAINED DURING INSTALLATION. THE FABRIC TROUGH SHALL BE INSTALLED ONLY AFTER THE JOINT IS COMPLETELY IN PLACE. FLAGGERS WILL BE REQUIRED DURING FABRIC TROUGH INSTALLATION.
13. THE FABRICATOR SHALL DETAIL A BOLTED FIELD SPLICE AT THE CONSTRUCTION JOINT FOR APPROVAL.



WASHER FOR BRACKET
SCALE: 3" = 1'- 0"



BRACKET PLAN
SCALE: 3" = 1'- 0"



BRACKET ELEVATION
SCALE: 3" = 1'- 0"

TEMP	"A" PIER 3	"A" PIER 4
0°F	2"	1 9/16"
15°F	1 3/4"	1 3/8"
30°F	1 1/2"	1 3/16"
45°F	1 1/4"	1"
60°F	1"	9/16"
75°F	3/4"	5/8"
90°F	1/2"	7/16"
105°F	1/4"	1/4"

ALL PLATES 1/2"

STATE OF VERMONT
AGENCY OF TRANSPORTATION

Town Of **CAMBRIDGE** Bridge No. **20**

Highway No. **VT 15** Log Sta.

VT 15 OVER LAMOILLE RIVER Surv. Sta.

EXPANSION JOINT DETAILS (SHEET 1)

Designed By **E.A.HARTWELL** Drawn By **R.A.ROSS**

Checked By **R. SACCHI** Date Bridge Design Supervisor **R. R. WHITCOMB** Date **11/3/2006**

PROJECT **CAMBRIDGE** PROJECT NO. **BHF 030-2(19)S**

L.G.C. Info. **zb308e13.dgn**

Bridge Sheet No. Sheet **39** of **68**