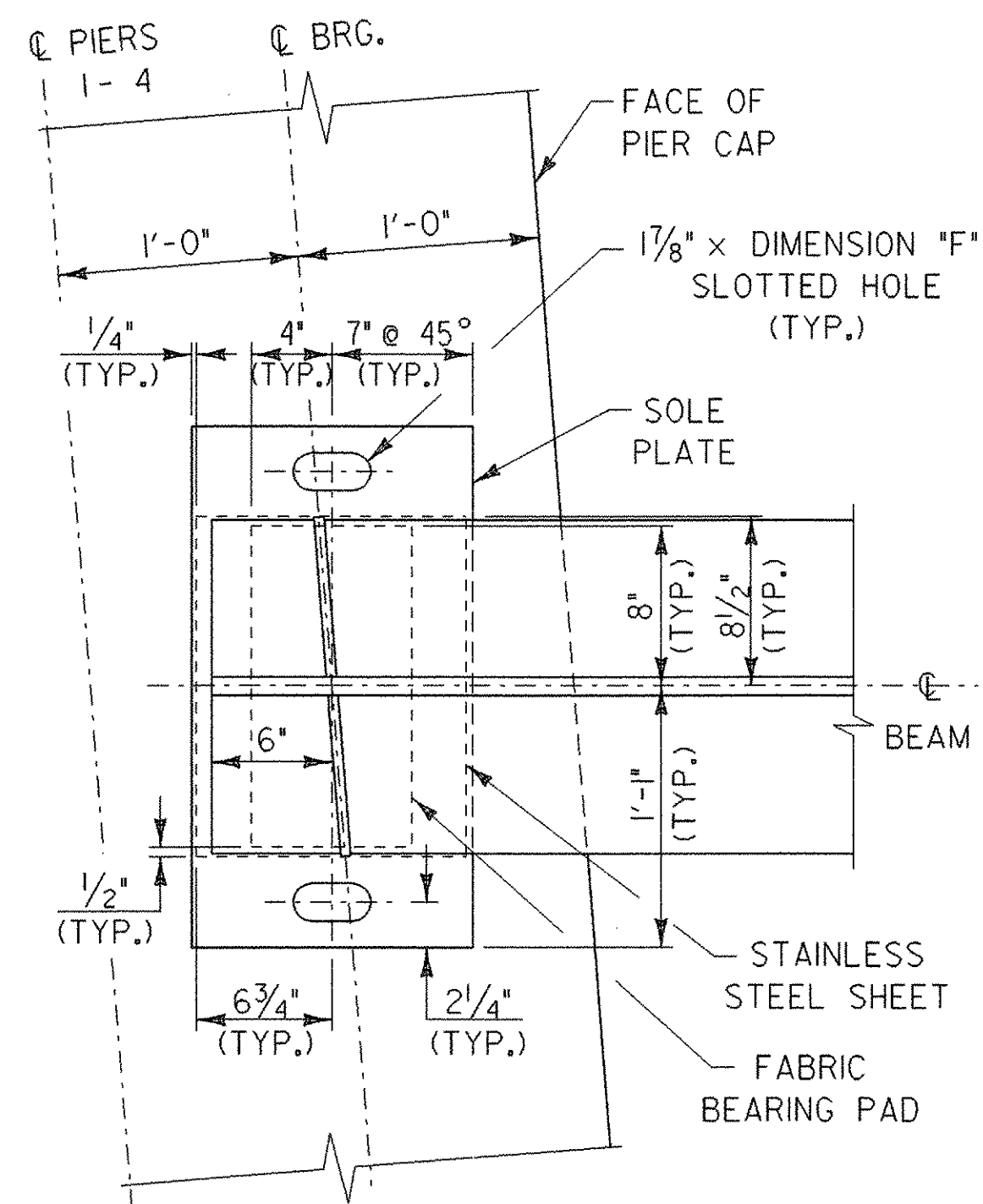
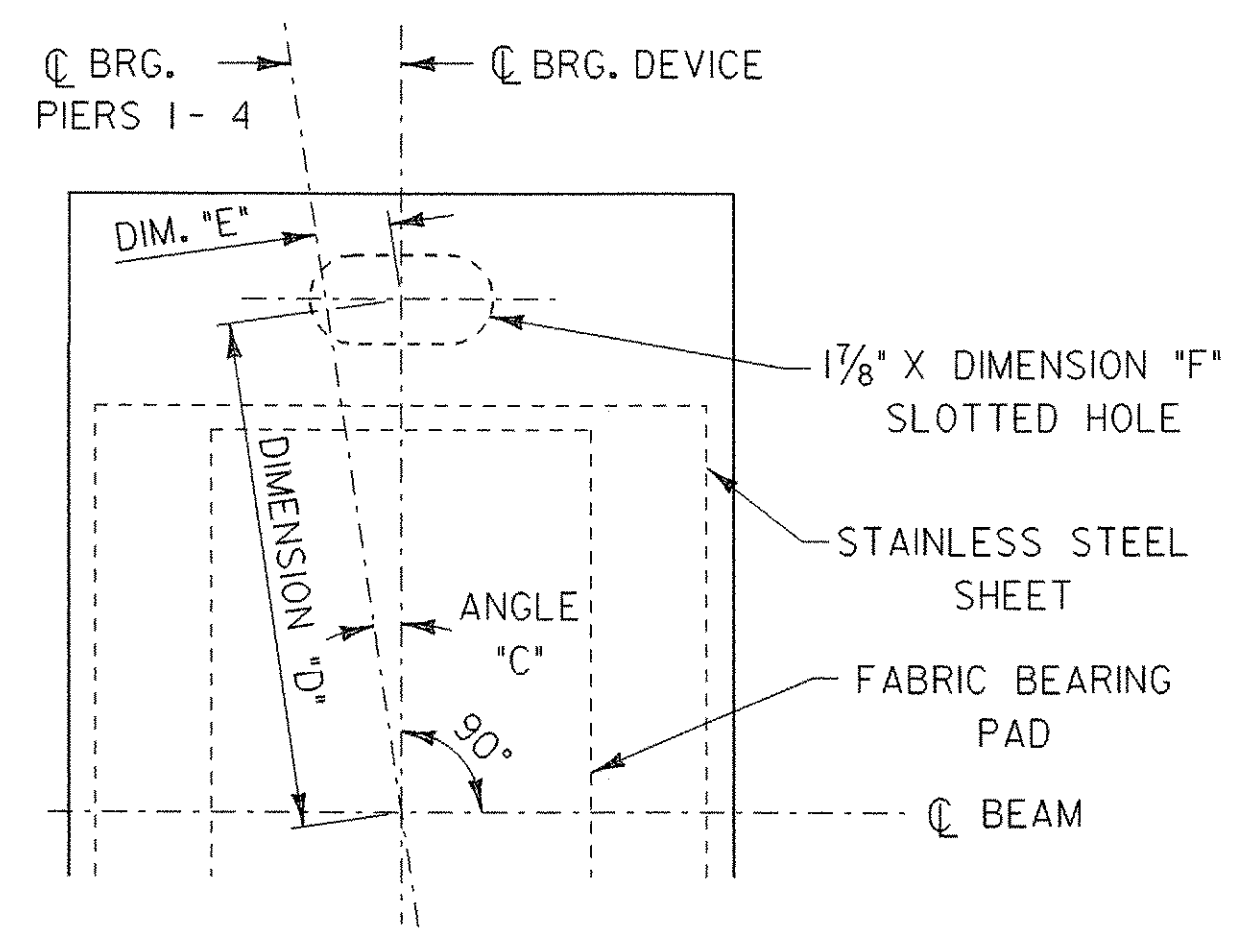


NOTE:

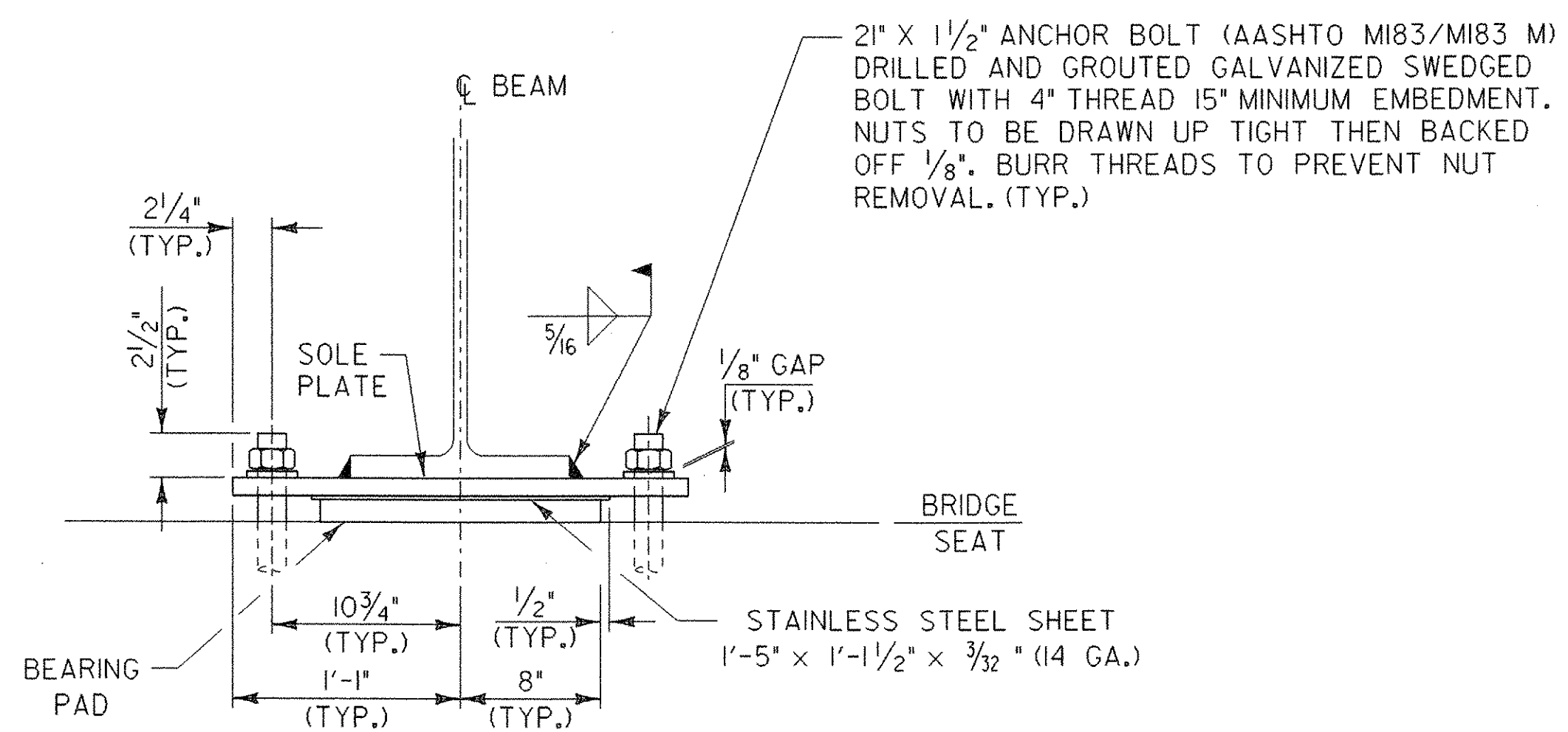
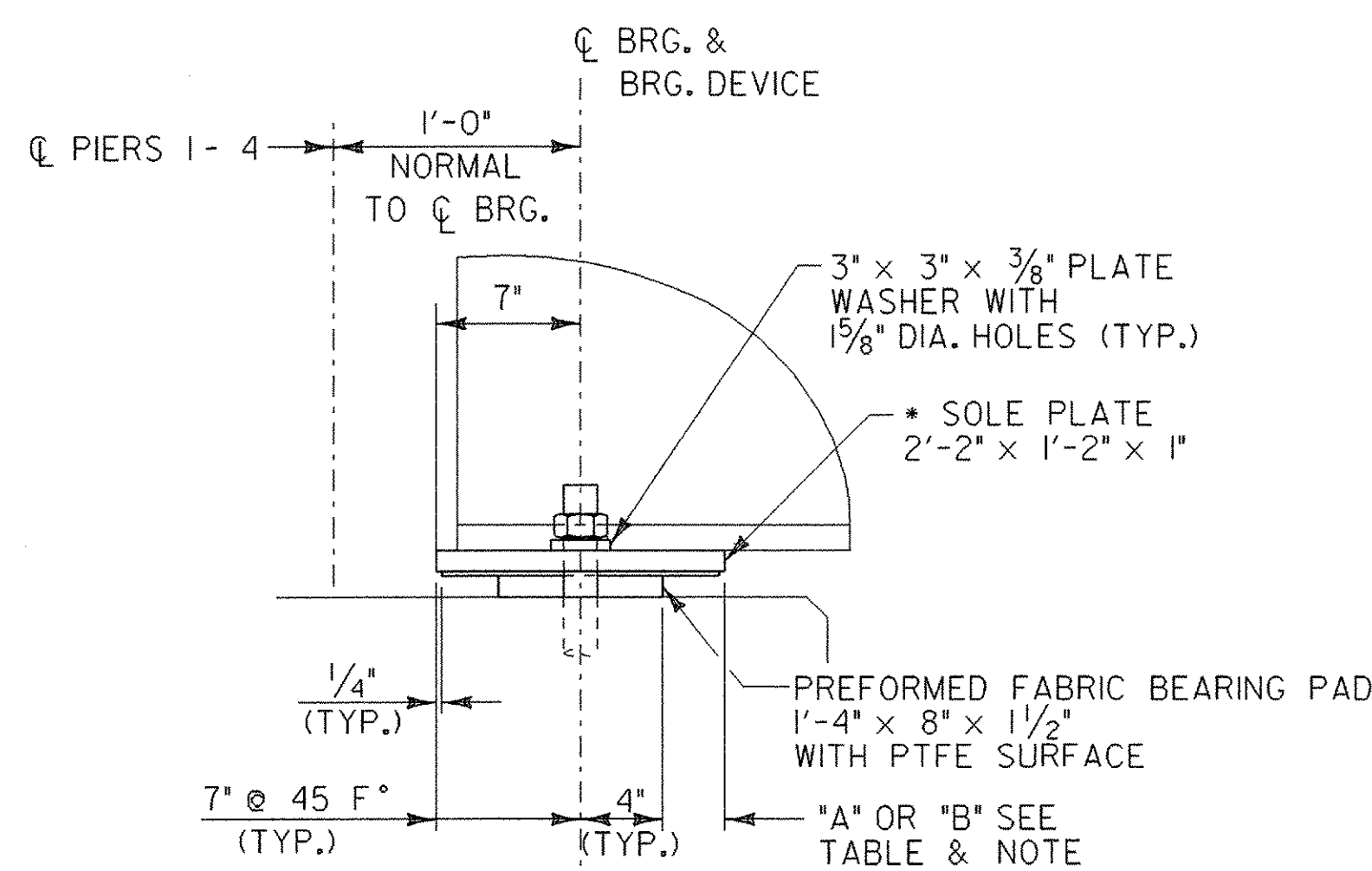
THE "A" DISTANCE IS THE SOLE PLATE ADJUSTMENT TO BE USED BEFORE DEAD LOAD IS ADDED TO THE GIRDERS. THE "B" DISTANCE IS THE SOLE PLATE ADJUSTMENT TO BE USED AFTER THE DECK AND CURBS HAVE BEEN POURED. THE DIFFERENCE IS THE THEORETICAL ELONGATION OF THE BOTTOM FLANGE DUE TO DEAD LOAD DEFLECTION FROM THE DECK AND CURBS. THE FINAL "B" DISTANCE MUST BE REACHED WITHIN 1/8".



TEMPERATURE SETTING TABLE														
SUBSTRUCTURE	P4				P3		P2				P1			
SPAN	SPAN 5		SPAN 4		SPAN 3		SPAN 3		SPAN 2		SPAN 2		SPAN 1*	
TEMP.	A	B	A	B	A	B	A	B	A	B	A	B	A	B
0°F	3 1/2"	3 5/8"	2 7/16"	2 11/16"	3 3/16"	3 5/16"	3 3/16"	3 5/16"	2 9/16"	2 11/16"	3 1/2"	3 5/8"	2 5/16"	2 3/8"
15°F	3 1/4"	3 3/8"	2 11/16"	2 13/16"	3 1/16"	3 3/16"	3 1/16"	3 3/16"	2 11/16"	2 13/16"	3 1/4"	3 3/8"	2 9/16"	2 5/8"
30°F	3 1/6"	3 3/16"	2 3/4"	2 7/8"	3"	3 1/8"	3"	3 1/8"	2 3/4"	2 7/8"	3 1/6"	3 3/16"	2 3/4"	2 3/16"
45°F	2 7/8"	3"	2 7/8"	3"	2 7/8"	3"	2 7/8"	3"	2 7/8"	3"	2 7/8"	3"	2 5/16"	3"
60°F	2 11/16"	2 13/16"	3"	3 1/8"	2 3/4"	2 7/8"	2 3/4"	2 7/8"	3"	3 1/8"	2 11/16"	2 13/16"	3 1/8"	3 3/16"
75°F	2 1/2"	2 5/8"	3 1/16"	3 3/16"	2 11/16"	2 13/16"	2 11/16"	2 13/16"	3 1/16"	3 3/16"	2 1/2"	2 5/8"	3 5/16"	3 3/8"
90°F	2 1/4"	2 3/8"	3 3/16"	3 5/16"	2 9/16"	2 11/16"	2 9/16"	2 11/16"	3 3/16"	3 5/16"	2 1/4"	2 3/8"	3 3/16"	3 5/8"
105°F	2 1/16"	2 3/16"	3 1/4"	3 3/8"	2 1/2"	2 5/8"	2 1/2"	2 5/8"	3 1/4"	3 3/8"	2 1/16"	2 3/16"	3 3/4"	3 3/16"



ANCHOR BOLT OFFSETS MEASURED FROM CL BEARING					
SPAN	LOCATION	ANGLE "C"	DIMENSION "D"	DIMENSION "E"	DIMENSION "F"
1	ABUT. 1	1° 06' 04"	10 3/4"	3/16"	1 7/8"
	PIER 1	1° 06' 04"	10 3/4"	3/16"	3 7/8"
2	PIER 1	3° 54' 13"	10 3/4"	3/4"	3 7/8"
	PIER 2	3° 54' 13"	10 3/4"	3/4"	5 1/8"
3	PIER 2	7° 18' 23"	10 11/16"	1 3/8"	5 1/8"
	PIER 3	7° 18' 23"	10 11/16"	1 3/8"	7 1/8"
4	PIER 3	10° 42' 34"	10 9/16"	2"	1 7/8"
	PIER 4	10° 42' 34"	10 9/16"	2"	3 7/8"
5	PIER 4	14° 06' 49"	10 7/16"	2 5/8"	3 7/8"
	ABUT. 2	14° 06' 49"	10 7/16"	2 5/8"	1 7/8"



* SOLE PLATE SIZE AT PIER 1, SPAN 1 IS 2'-2" X 1'-2" X 2 1/2"

**STATE OF VERMONT
AGENCY OF TRANSPORTATION**

Town Of	CAMBRIDGE	Bridge No. 20
Highway No.	VT 15	Log Sta.
		Surv. Sta.
VT 15 OVER LAMOILLE RIVER		
EXPANSION BEARING DETAILS		
Designed By	E.A. HARTWELL	Drawn By
Checked By	R. SACCHI	Date
		Bridge Design Supervisor
PROJECT	CAMBRIDGE	RR, R. A. W. COMB
		Date 11/3/2006
		PROJECT NO.
		BHF 030-2(19)S
I.G.C. Info.		zb308bd1.dgn
Bridge Sheet No.		Sheet 35 of 68