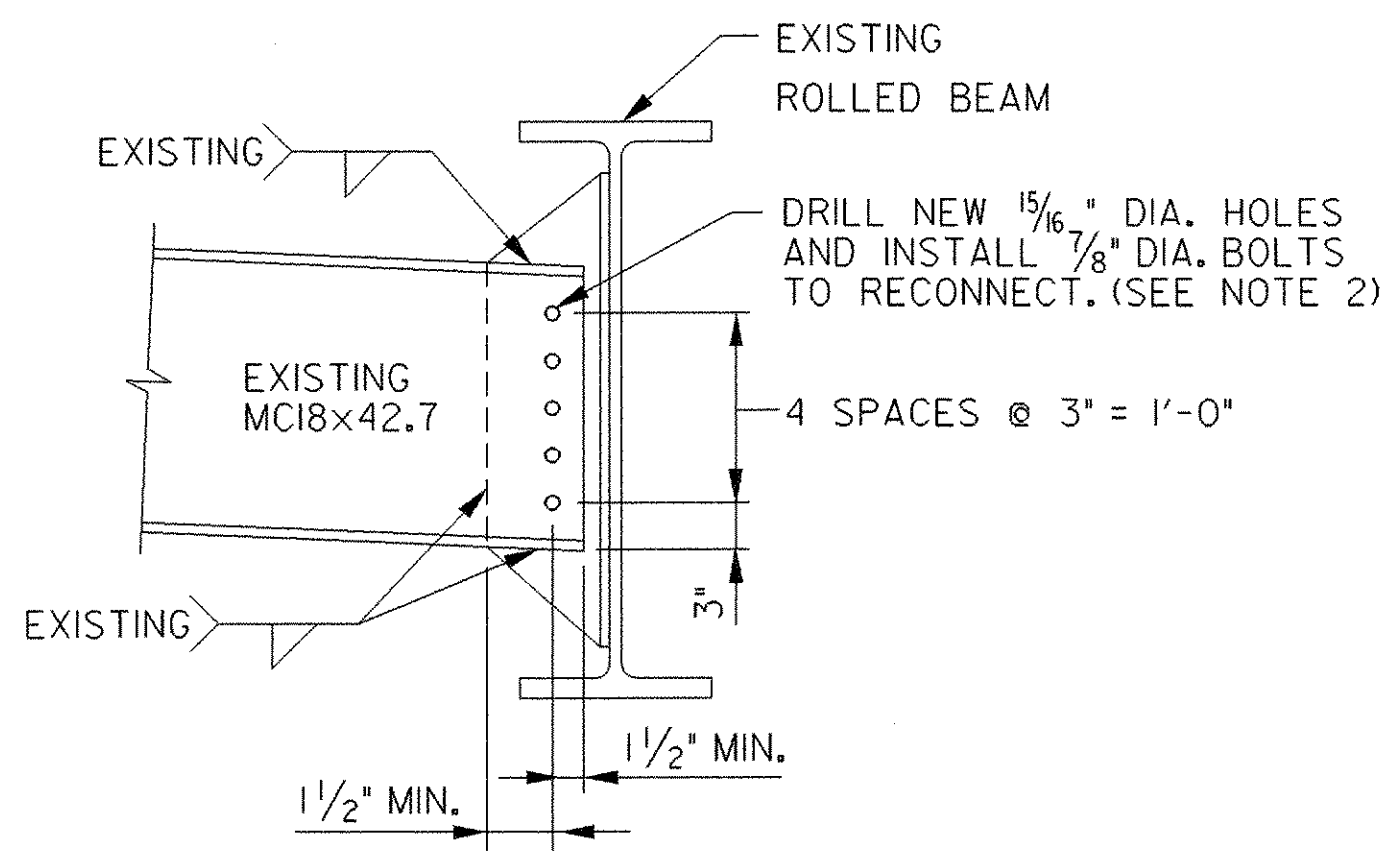


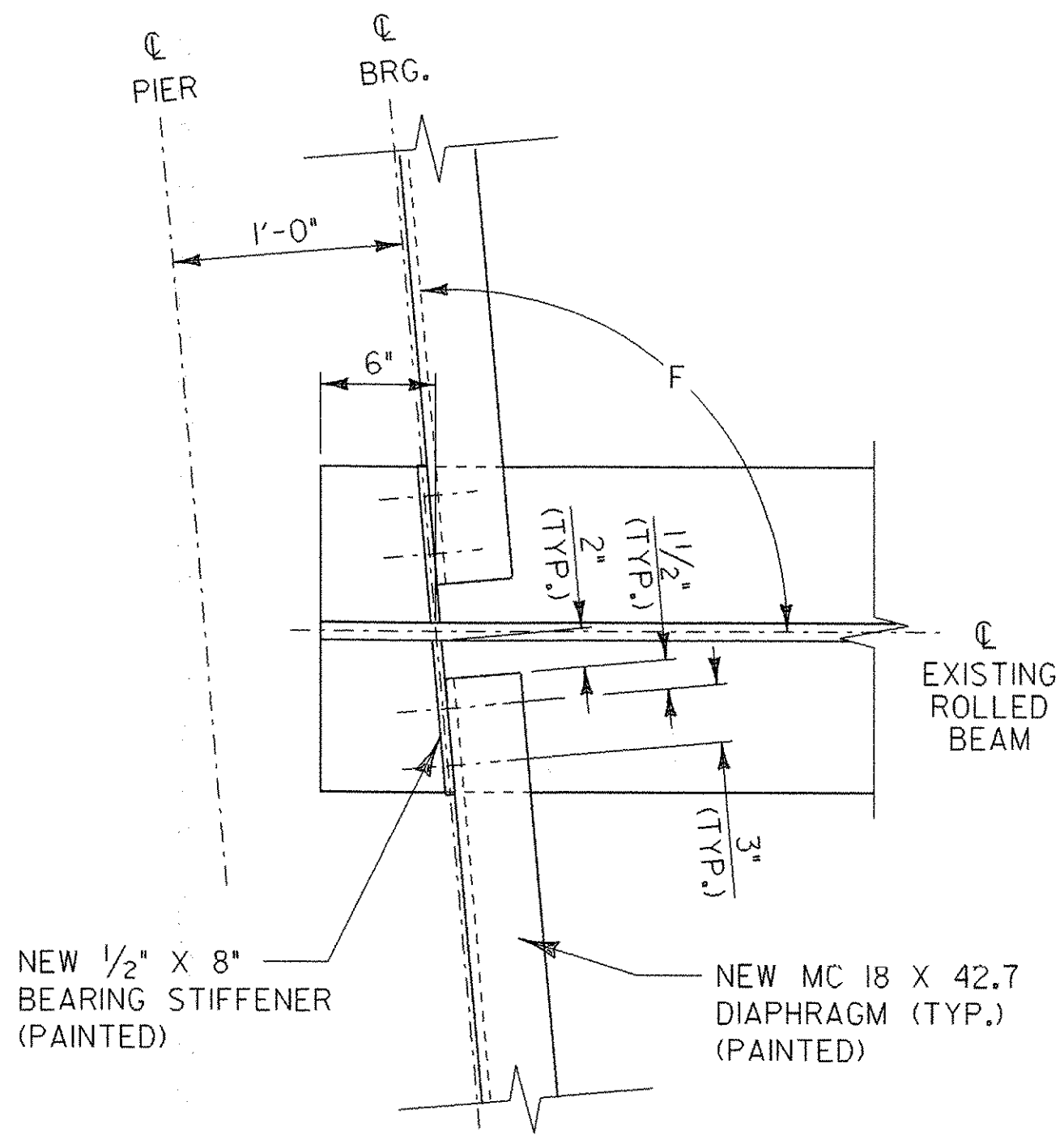
- NOTES:
1. BEARING STIFFENERS WILL BE LAID OUT PARALLEL TO AND CENTERED ON THE CENTERLINE OF BEARING. (SEE FRAMING PLAN SHT. 32 & 33)
 2. BEARING STIFFENERS TO BE PROVIDED WITH EXTRA LENGTH TO COMPENSATE FOR SLOPED AND DETERIORATED FLANGES. CONTRACTOR TO MEASURE AND FURNISH LENGTHS REQUIRED.

PIER DIAPHRAGMS

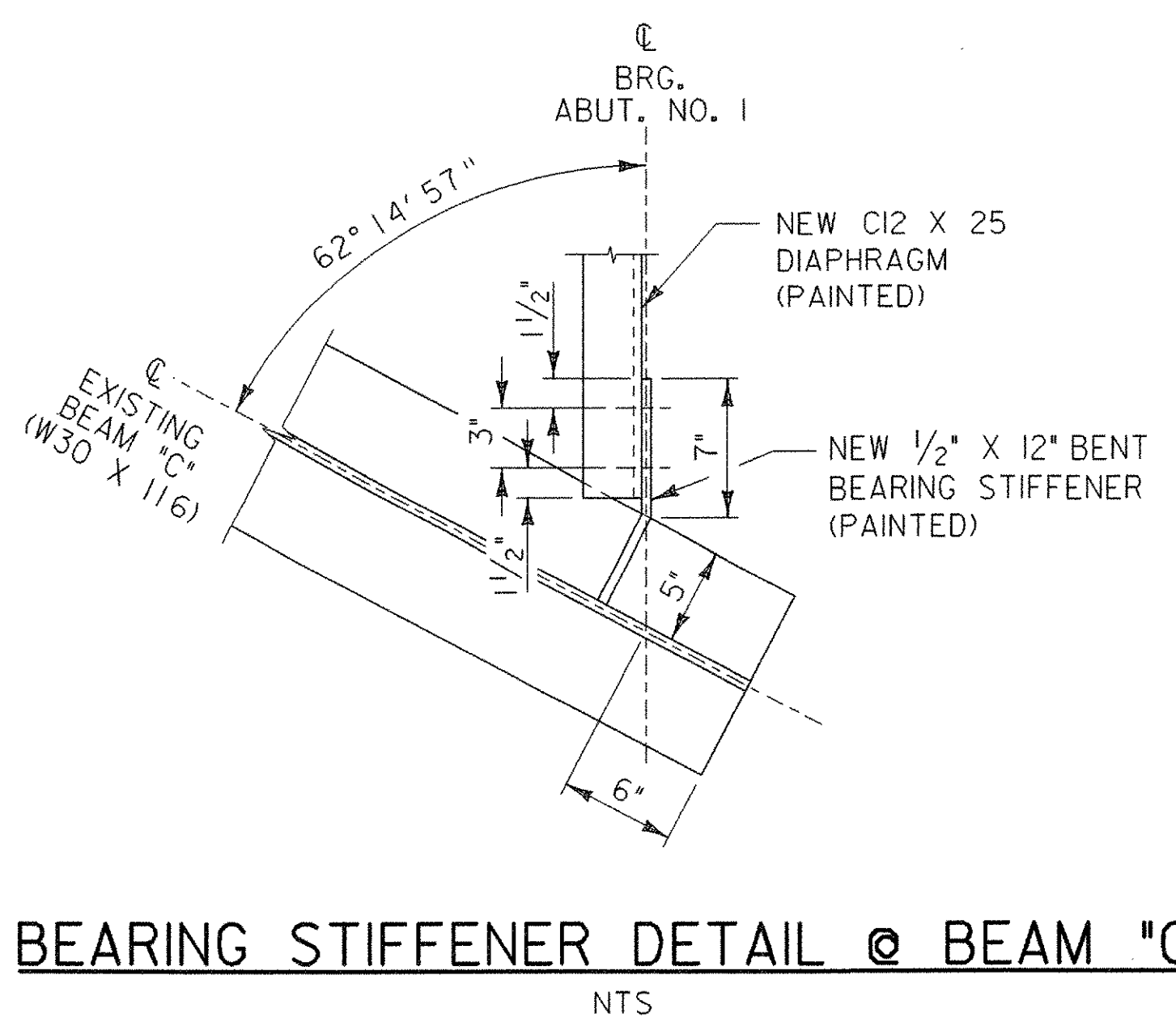


**DISCONNECT AND RECONNECT DIAPHRAGM
SPAN 2-5
N.T.S.**

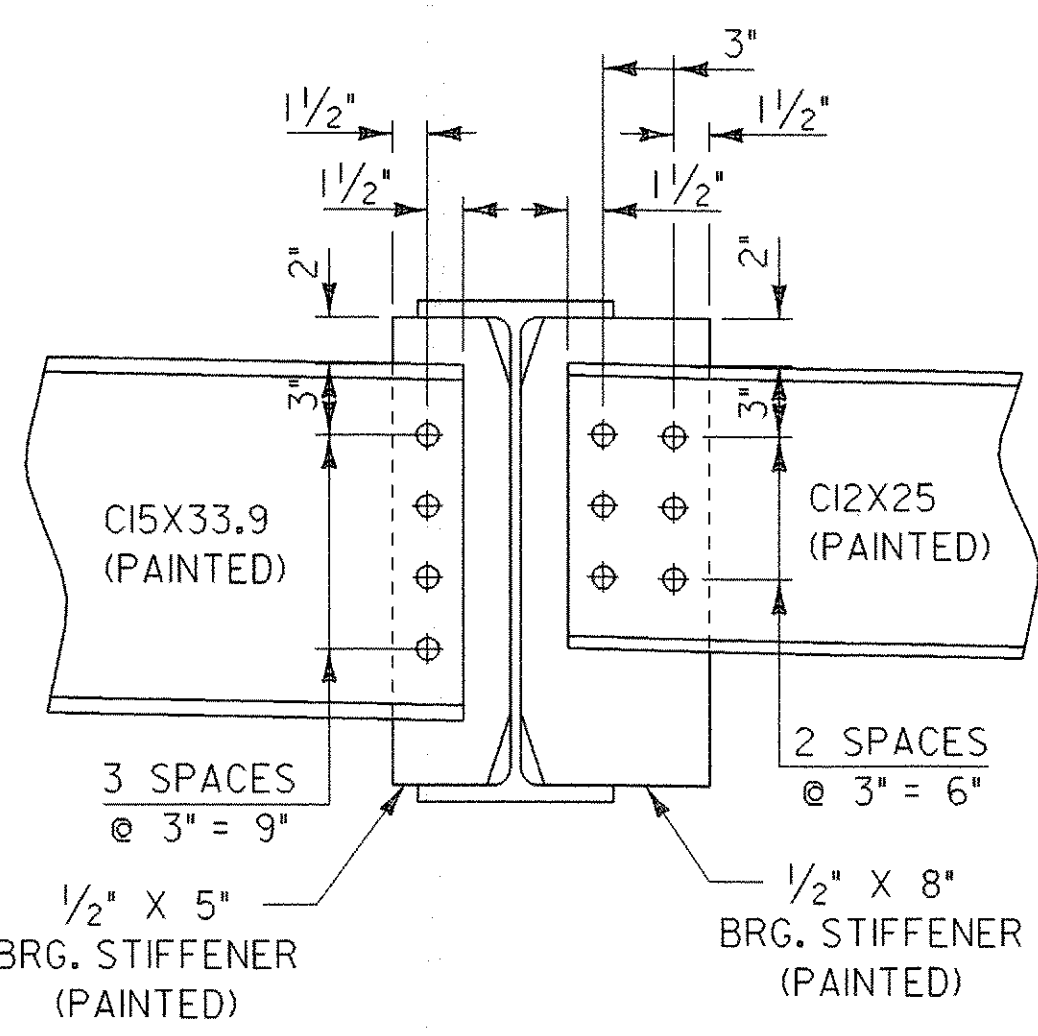
- NOTES:
1. PRIOR TO REMOVAL OF DECK IN PHASE I CONSTRUCTION, DISCONNECT DIAPHRAGMS ON EAST SIDE OF BEAM G4.
 2. AFTER DECK IS POURED IN PHASE II, RECONNECT DIAPHRAGMS BY USING 7/8\"/>



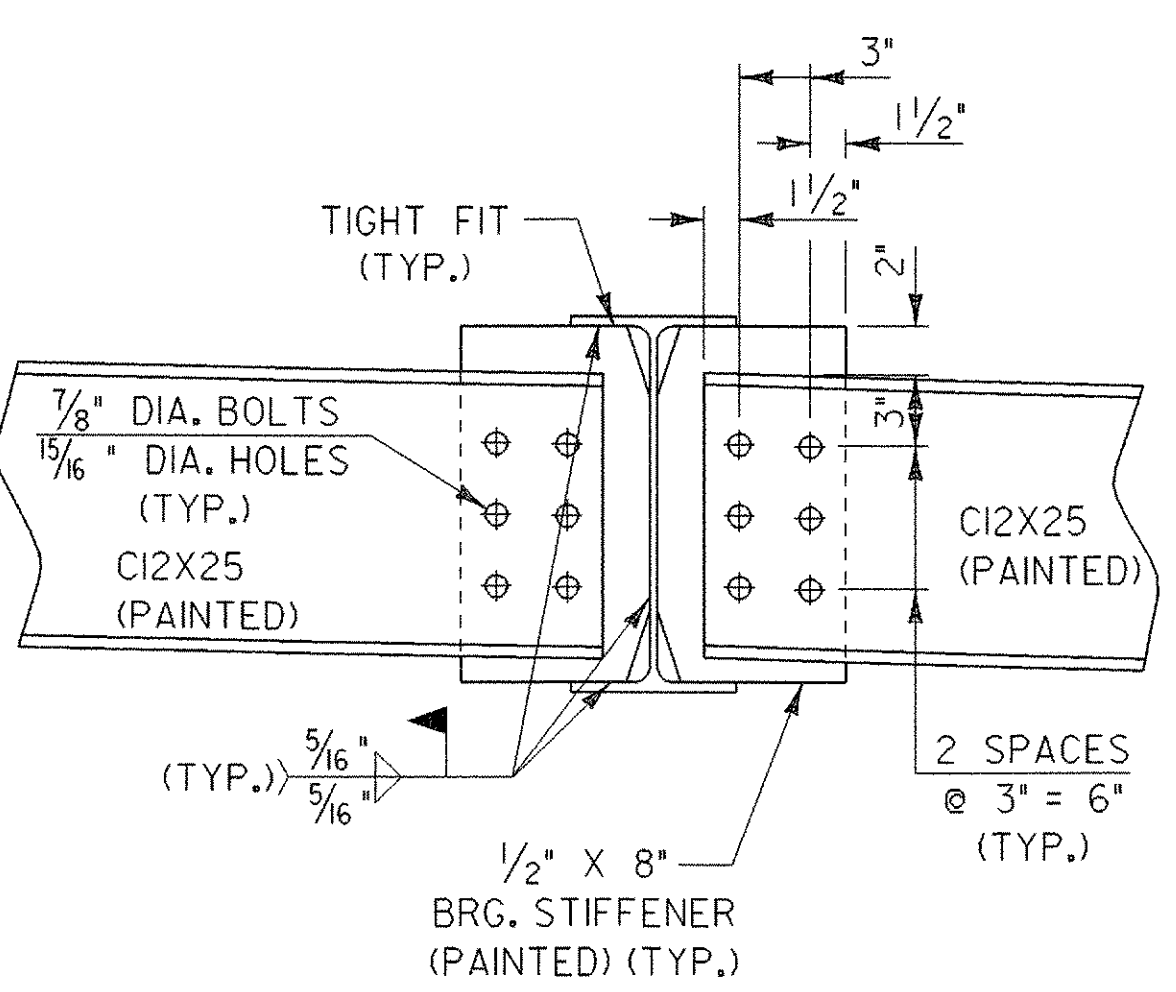
**BEARING STIFFENER DETAIL @ PIERS
N.T.S.**



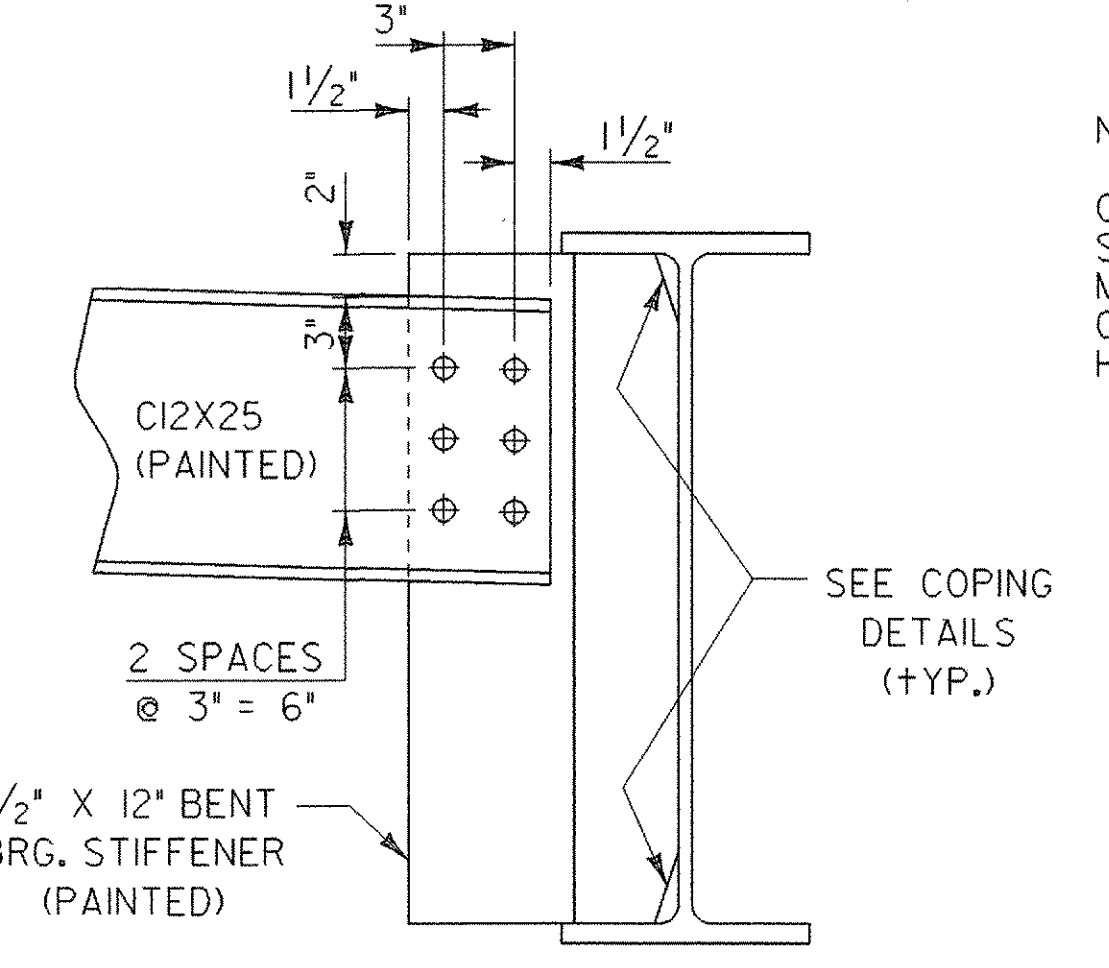
**BEARING STIFFENER DETAIL @ BEAM "C"
N.T.S.**



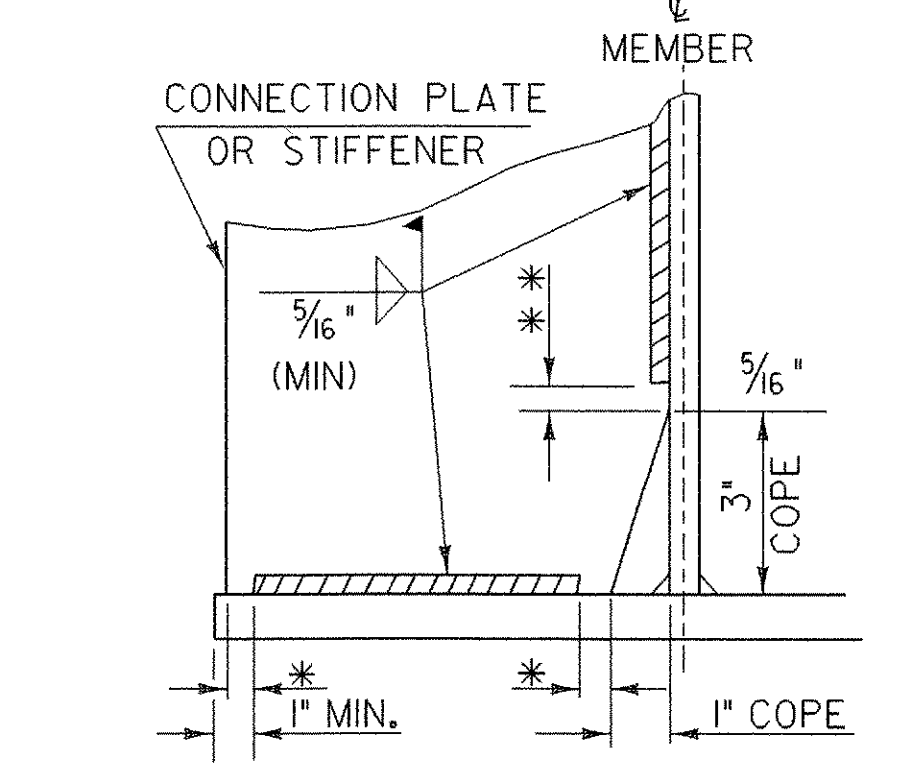
**ABUTMENT DIAPHRAGM
AT W21 X 68
N.T.S.**



**ABUTMENT DIAPHRAGM
AT W16 X 36
N.T.S.**

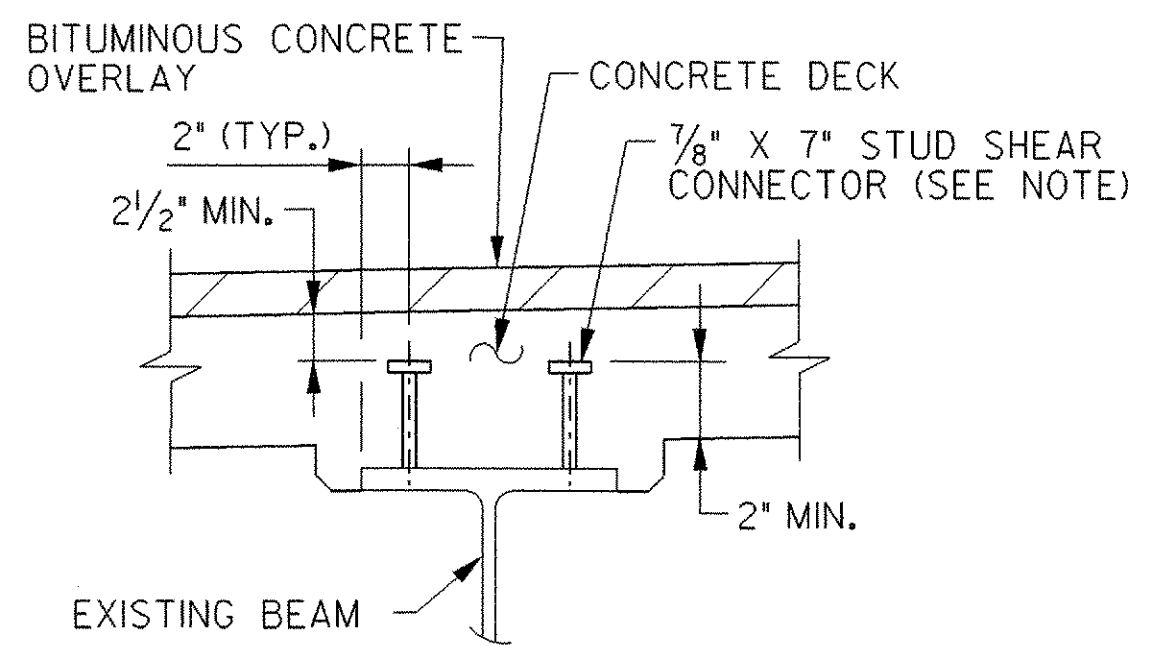


**ABUTMENT DIAPHRAGM
AT W30 X 116
N.T.S.**



- * NO WELD FOR 1/4\"/>

**WELD TERMINATION AND COPING
DETAILS FOR STEEL MEMBERS
N. T. S.**



- NOTE:
- ONCE THE HAUNCHES HAVE BEEN CALCULATED, LONGER SHEAR STUDS WITHIN ANY AREAS WITH GREATER THAN 4\"/>

**SHEAR CONNECTOR DETAIL
N.T.S.**

STATE OF VERMONT AGENCY OF TRANSPORTATION			
Town Of	CAMBRIDGE	Bridge No. 20	
Highway No.	VT 15	Log Sta. Surv. Sta.	
VT 15 OVER LAMOILLE RIVER			
FRAMING DETAILS			
Designed By	B.W.ERNST	Drawn By	V. COMMISSO
Checked By	Date R. SACCHI	Bridge Design Supervisor	R. R. WHITCOMB Date 11/3/2006
PROJECT	CAMBRIDGE	PROJECT NO.	BHF 030-2(19)S
I.G.C. Info.			zb308fp3.dgn
Bridge Sheet No.			Sheet 34 of 68