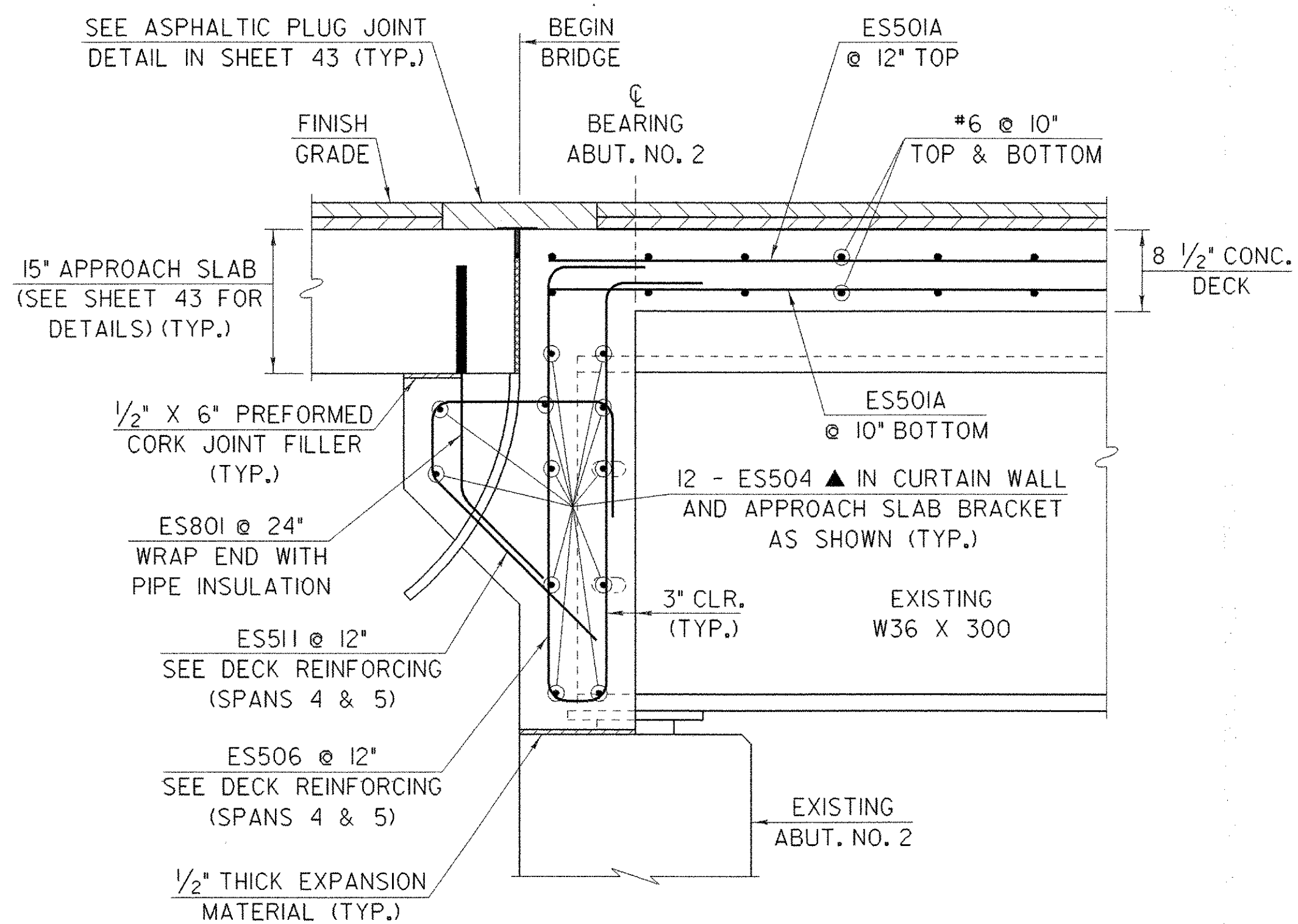


DECK POUR SEQUENCE PHASES 1 AND 2

NTS

DECK POUR NOTES:

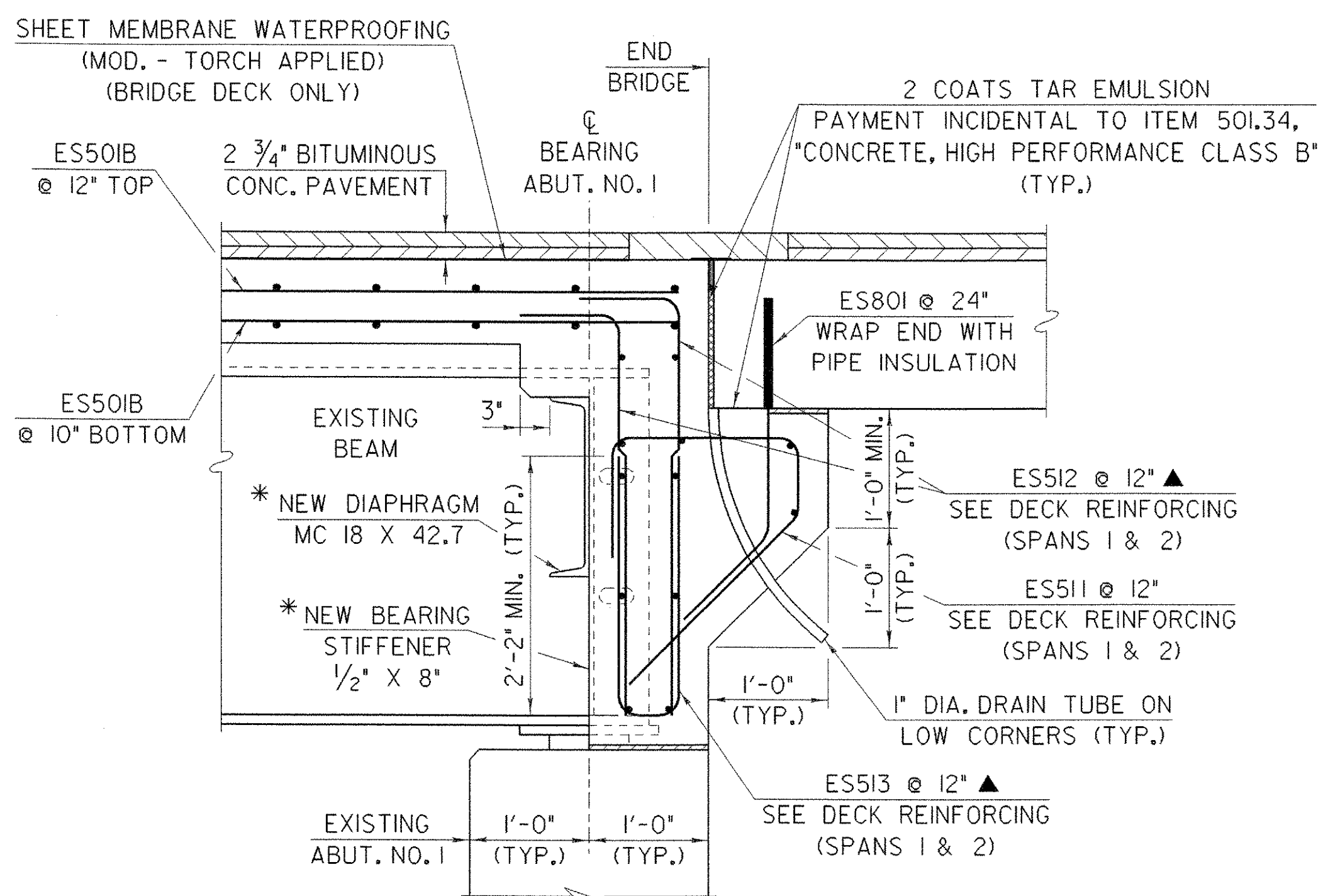
1. ANY PROPOSED POURING SEQUENCE OTHER THAN INDICATED SHALL BE SUBMITTED IN WRITING TO VAOT FOR APPROVAL.
2. POURS MUST BE MADE WITHIN A TIME SPAN OF EIGHT HOURS. AN APPROVED POURING SEQUENCE SHALL BE FOLLOWED AND A RETARDING ADMIXTURE USED SO THAT THE DECK CONCRETE WILL NOT SET UP UNTIL THE ENTIRE POUR HAS BEEN MADE. THE RETARDING ADMIXTURE SHALL BE INCIDENTAL TO PAY ITEM 501.33 "CONCRETE, HIGH PERFORMANCE CLASS A".
3. TRANSVERSE BRIDGE SLAB CONSTRUCTION JOINTS SHALL BE USED BETWEEN ADJACENT DECK POURS.
4. ALL INDIVIDUAL DECK POURS SHALL START FROM THE LOW END (RELATIVE TO GRADE).
5. THERE SHALL BE A MINIMUM DELAY PERIOD OF 96 HOURS BETWEEN POURS.



SECTION B-B

SCALE: 1" = 1'-0"

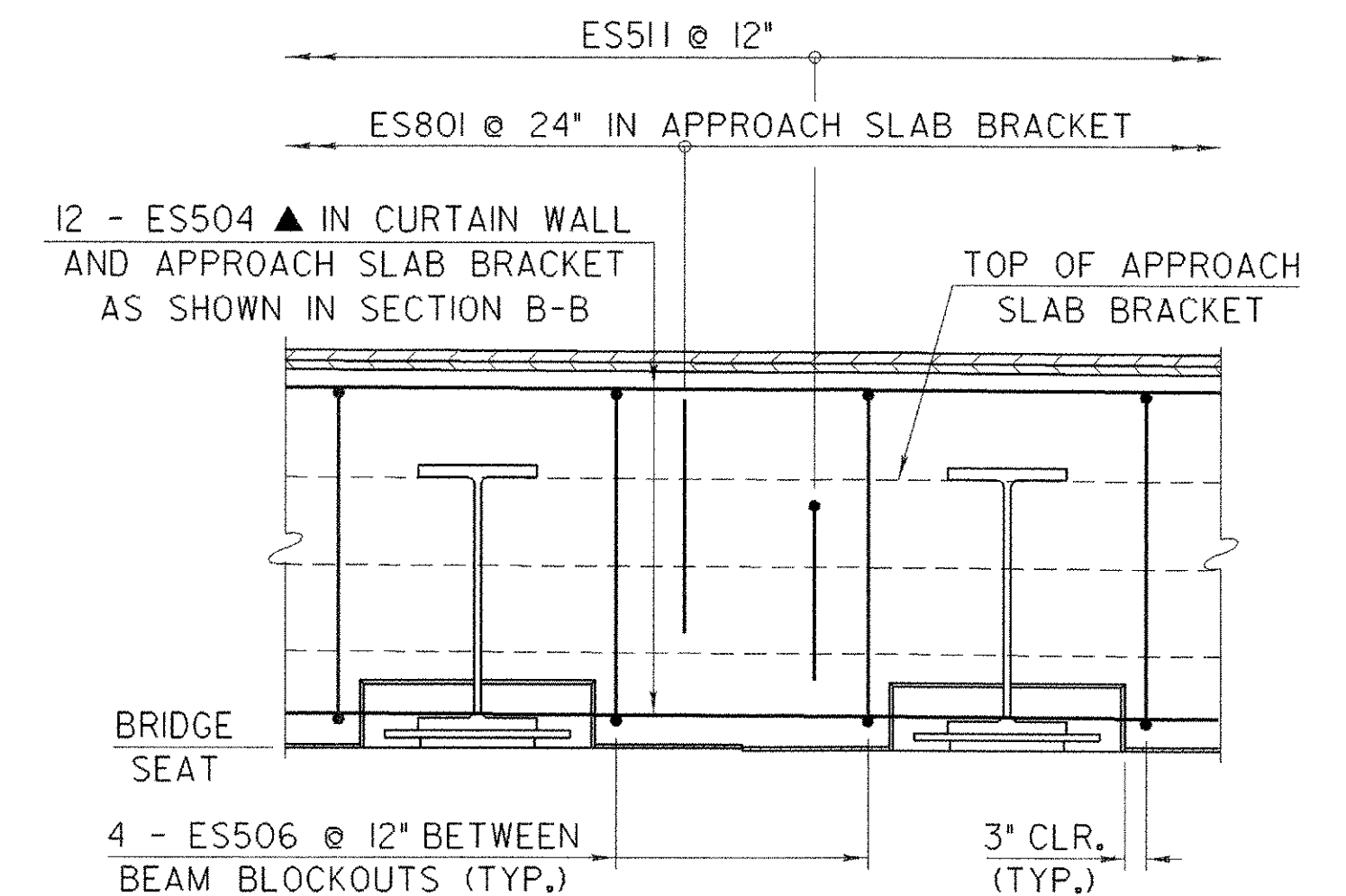
(ABUT. NO. 1 SIMILAR EXCEPT AT SECTION E-E)



SECTION E-E

SCALE: 1" = 1'-0"

* SEE FRAMING PLAN ON SHEET 32 FOR LOCATION OF NEW DIAPHRAGMS AND BEARING STIFFENERS AT ABUT. NO. 1.



SECTION A-A

SCALE: 1/2" = 1'-0"

**STATE OF VERMONT
AGENCY OF TRANSPORTATION**

Town Of	CAMBRIDGE	Bridge No.	20
Highway No.	VT 15	Log Sta.	
		Surv. Sta.	
VT 15 OVER LAMOILLE RIVER			
CONCRETE DETAILS			
Designed By	B.W.ERNST/E.HARTWELL	Drawn By	C.L. SZCZEPANSKI
Checked By	R. SACCHI	Date	
		Bridge Design Supervisor	R. R. WHITCOMB
		Date	11/3/2006
PROJECT	CAMBRIDGE	PROJECT NO.	BHF 030-2(19)S
I.G.C. Info.			zb308md3.dgn
Bridge Sheet No.		Sheet	31 of 68