

GPS CONTROL POINTS

### TRAVERSE 1

VTAT SURVEY DISK IN CONCRETE MONUMENT STAMPED  
"GRAND ARMY AZMK 1996"

N = 82890.203  
E = 39663.951  
Z = 467.355

GENERAL LOCATION, 1 MI (1.6 KM) WEST OF CAMBRIDGE, 15 MI (24.1 KM) NORTHEAST OF ESSEX JUNCTION. TO REACH FROM THE JUNCTION OF VERMONT ROUTES 15 AND 104 PROCEED EAST ALONG ROUTE 15 FOR .35 MI (0.56 KM) TO STATION ON THE LEFT (NORTH). STATION IS 35 FT (10.7 M) WEST OF A CONCRETE BOUND, 24 FT (7.3 M) NORTHEAST OF AND 1 FT (0.3 M) LOWER THAN THE CENTERLINE OF ROUTE 15, 4.5 FT (1.4 M) NORTH OF THE MOST EASTERLY GUARDRAIL POST, 1 FT (0.3 M) SOUTH OF A FIBERGLASS WITNESS.

### TRAVERSE 2

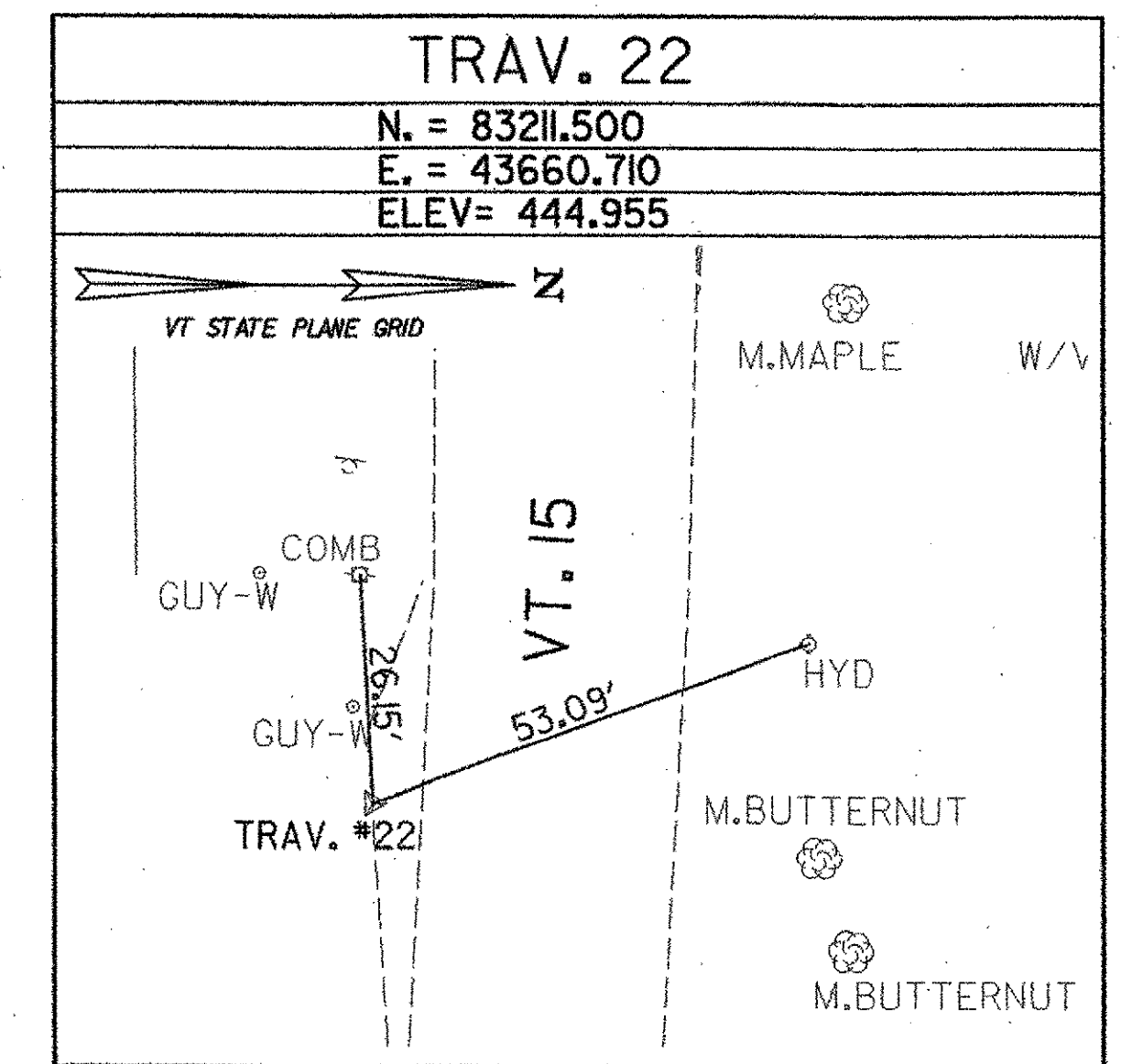
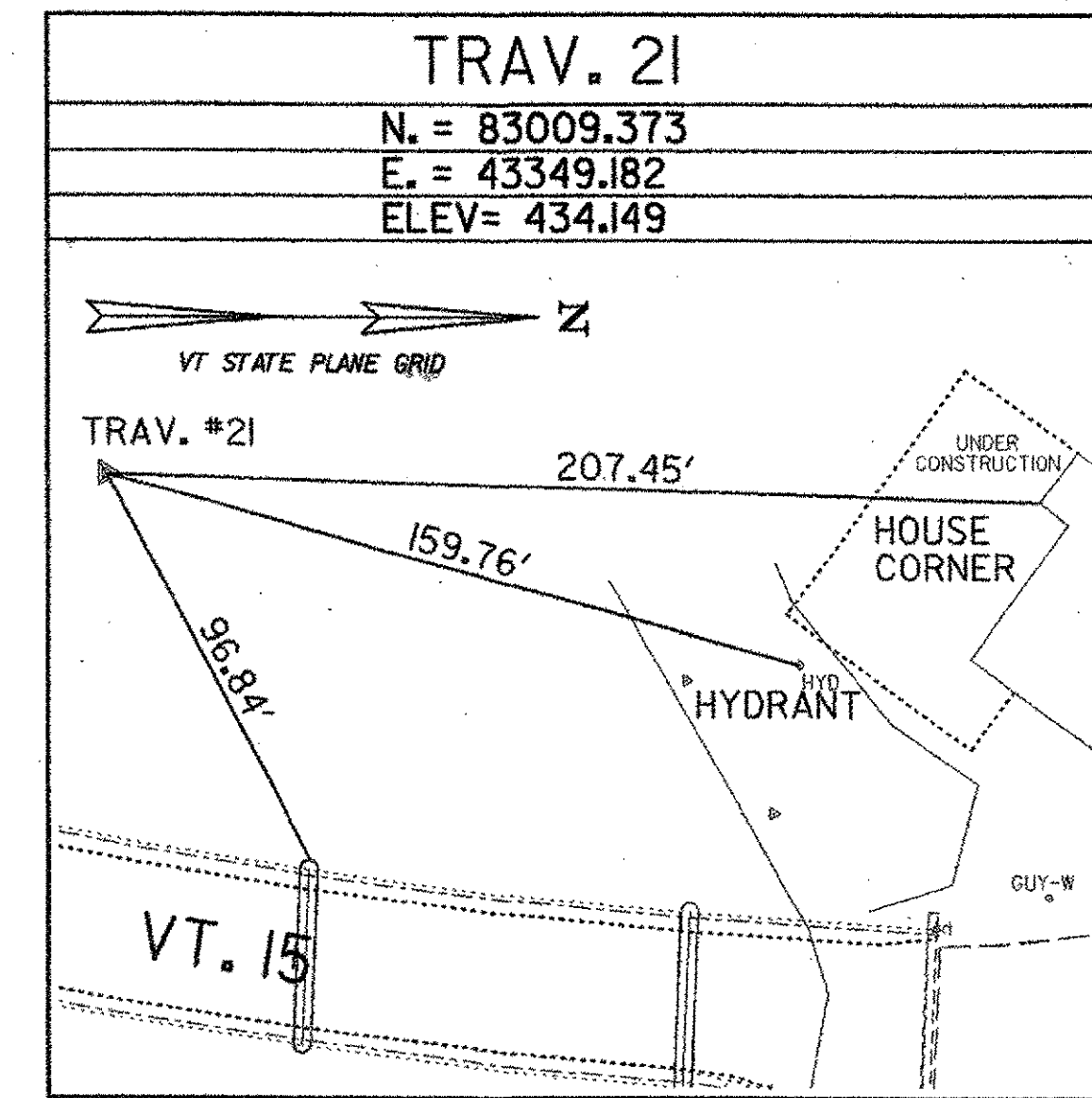
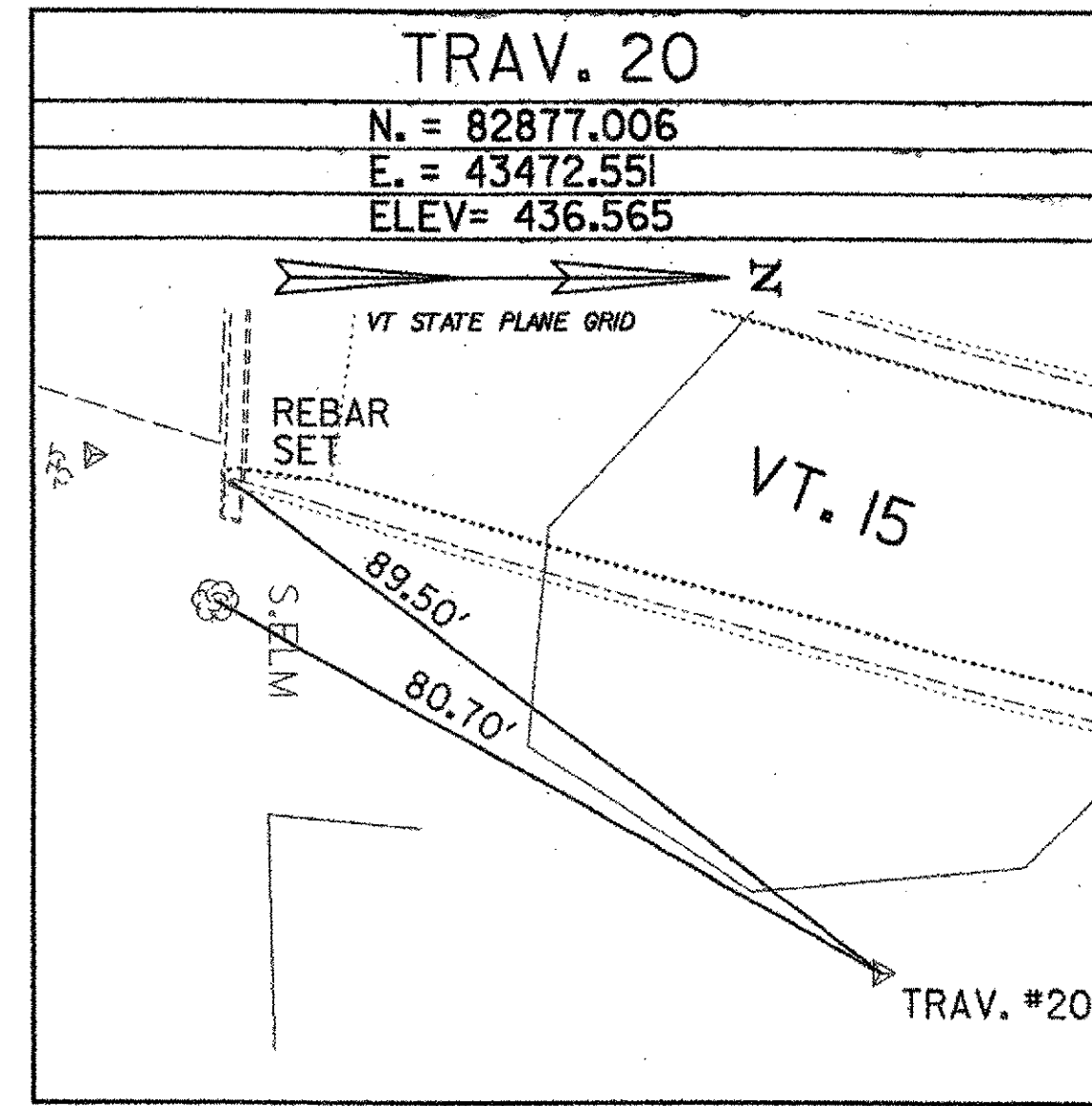
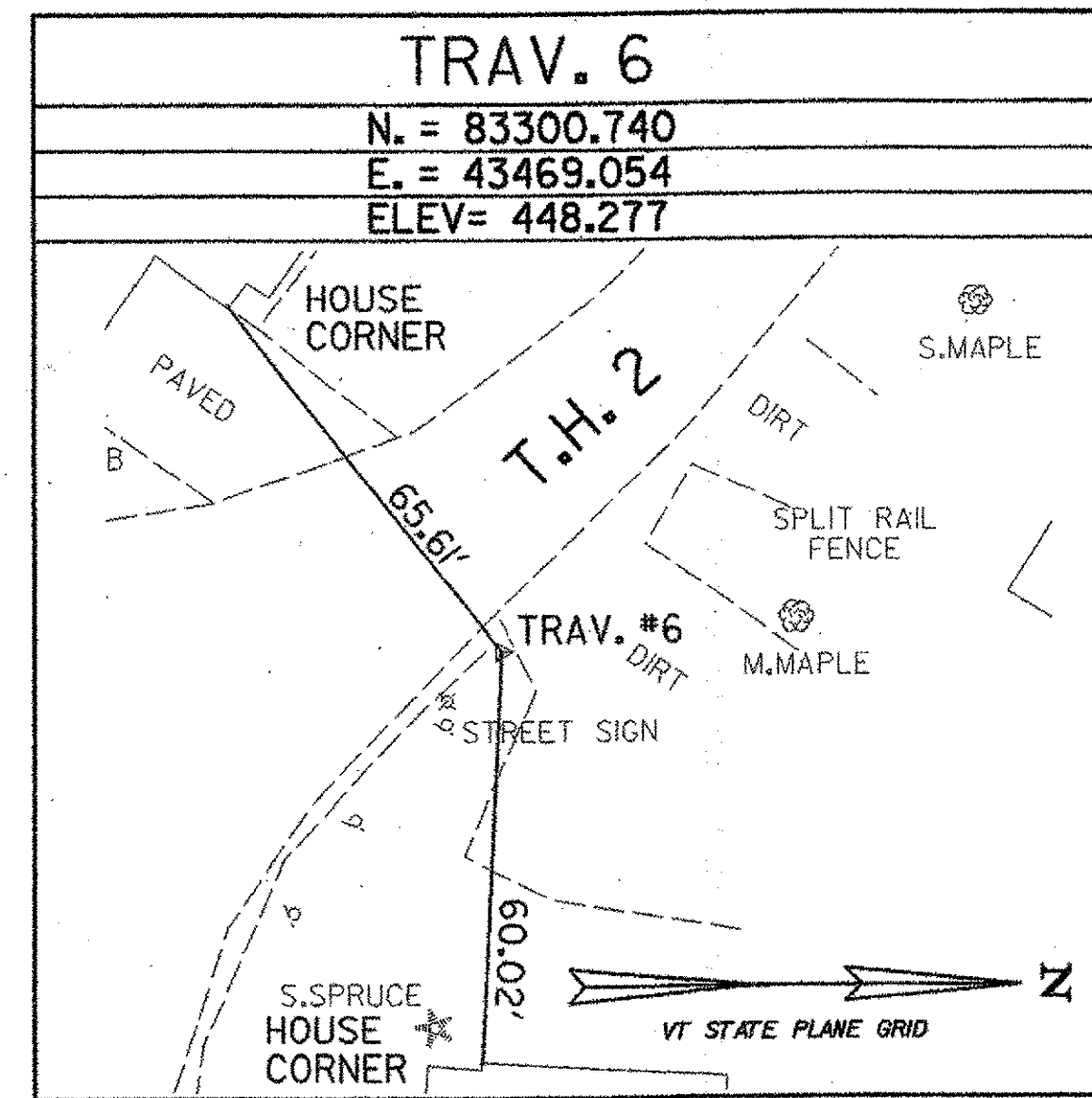
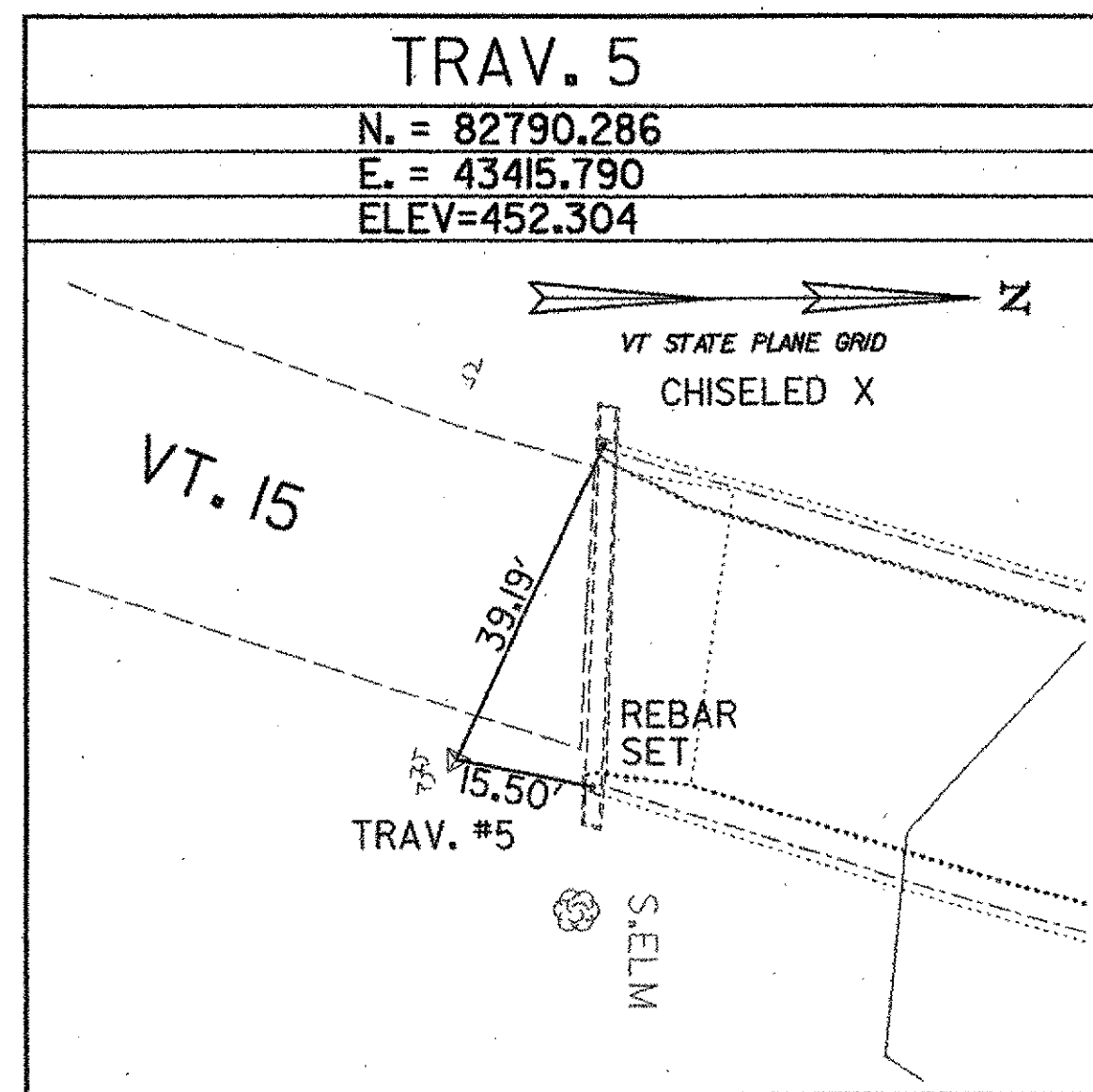
VTAT SURVEY DISK STAMPED IN CONCRETE MONUMENT STAMPED  
"GRAND ARMY 1996"

N = 82296.136  
E = 40852.899  
Z = 452.460

GENERAL LOCATION, 1 MI (1.6 KM) WEST OF CAMBRIDGE, 15 MI (24.1 KM) NORTHEAST OF ESSEX JUNCTION. TO REACH FROM THE JUNCTION OF VERMONT ROUTES 15 AND 104 PROCEED EAST ALONG ROUTE 15 FOR 300 FT (91.4 M) TO STATION ON THE LEFT (NORTH) IN A GRAVEL PULLOUT. STATION IS 82 FT (25.0 M) NORTHWEST OF THE MOST WESTERLY GUARDRAIL POST, 30 FT (9.1 M) NORTHEAST OF THE CENTERLINE OF ROUTE 15, 2 FT (0.6 M) SOUTHWEST OF A FIBERGLASS WITNESS.

\* DESCRIPTION PROVIDED BY AGENCY OF TRANSPORTATION ON GEODETIC SURVEY UNIT

## TRAVERSE TIES



<b>DATUM</b>	
VERTICAL	NAV83
HORIZONTAL	NAD 83

NOTE:  
1. TIE DRAWINGS ARE NOT TO SCALE.

#### TIE SHEET #1

PROJECT NAME: CAMBRIDGE	
PROJECT NUMBER: BHF 030-2 (19) S	
FILE NAME: ZB308TIE.DGN	PLOT DATE: 04/10/02
PROJECT LEADER: M. K. CHEVALIER	DRAWN BY: A. N. BEY
DESIGNED BY: B. ERNST	CHECKED BY: M. K. CHEVALIER
SHEET 7 OF 68	