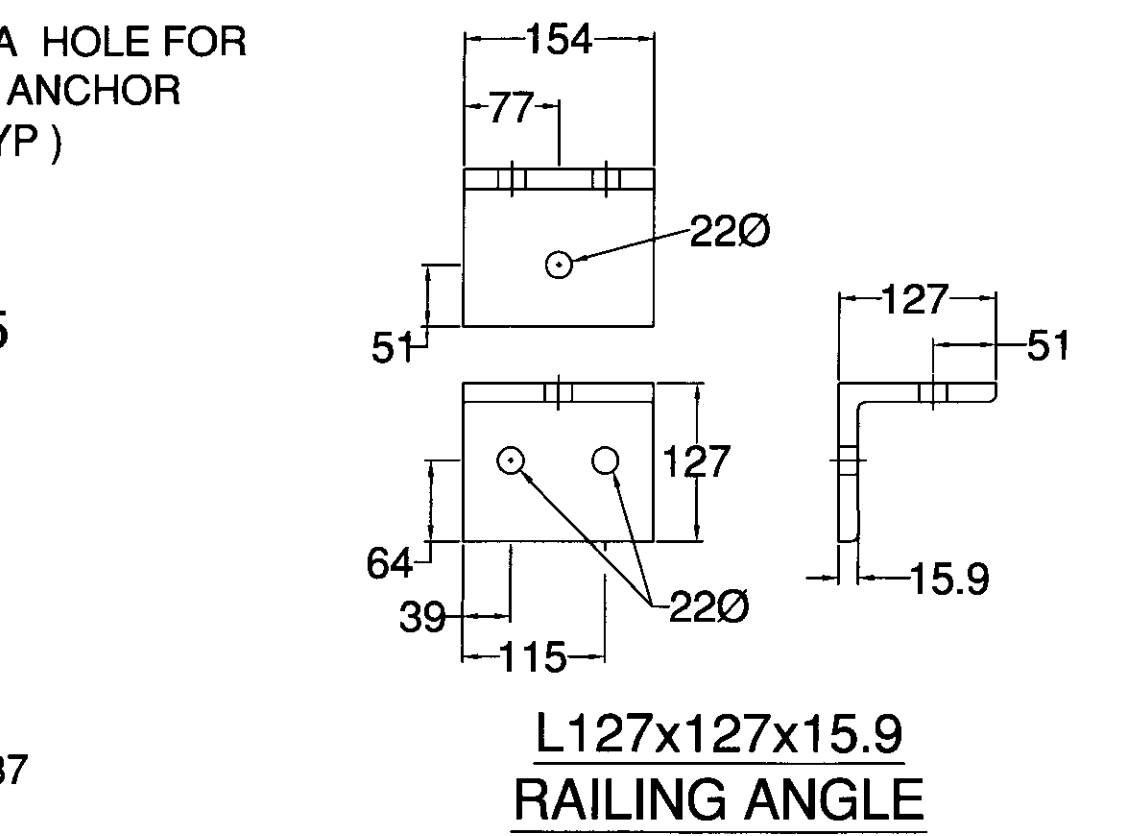
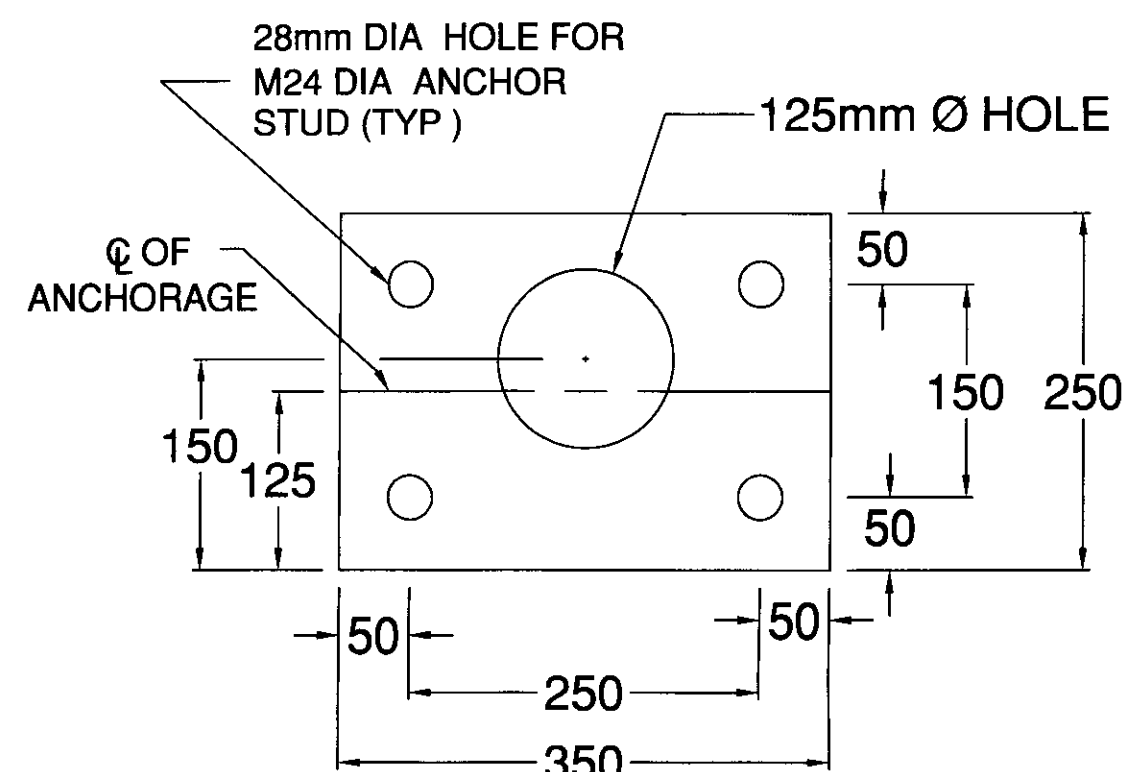


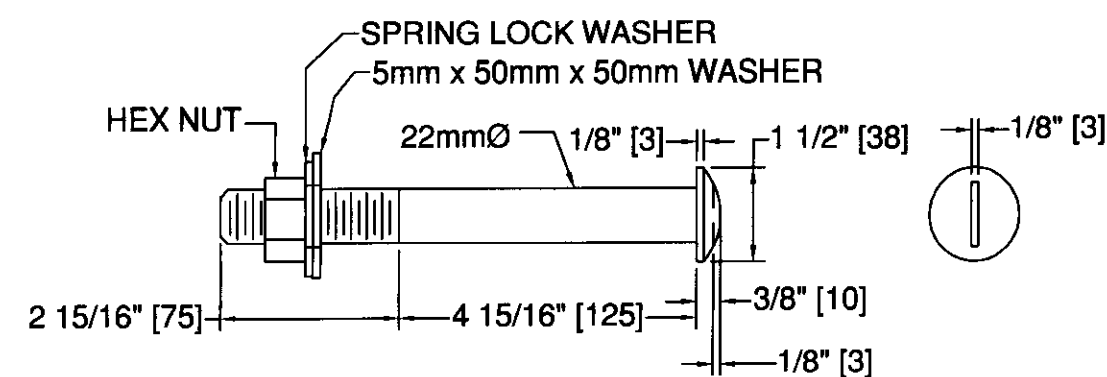
SECTION A-A  
350 x 32 x 250  
BASE PLATE



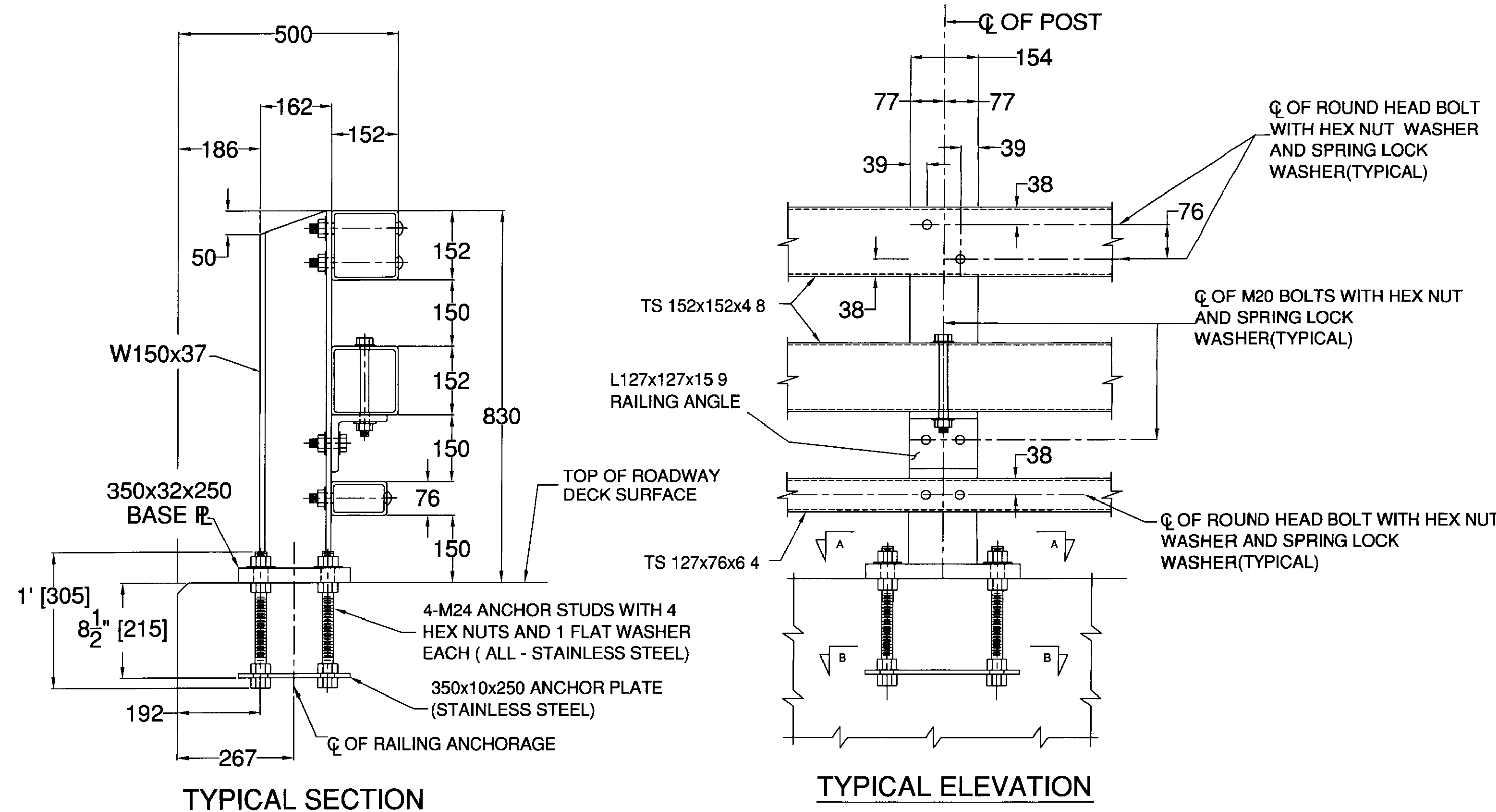
L127x127x15.9  
RAILING ANGLE



SECTION B-B  
350 x 10 x 250  
ANCHOR PLATE 4 ea.



ROUND HEAD BOLT



TYPICAL SECTION

TYPICAL ELEVATION

3 RAIL STEEL BRIDGE RAILING DETAIL (TYP)

NOTES:

- 1) ALL RAILING IS TO BE FABRICATED AND ERECTED ACCORDING TO SECTION 528 OF THE STANDARD SPECIFICATIONS. AND TO THE 900 OF THE
- 2) PRIOR TO GALVANIZING THE ASSEMBLED POST, GRIND ALL EDGES TO A MINIMUM RADIUS OF 2 mm.
- 3) BOLTS SHALL BE TORQUED SNUG TIGHT (APPROXIMATELY 135 N-m)
- 4) DETAILS ON THE DRAWING LABELED AS "NOT TO SCALE" ARE INTENTIONALLY DRAWN NOT TO SCALE FOR VISUAL CLARITY. ALL OTHER DETAILS FOR WHICH NO SCALE IS SHOWN ARE DRAWN PROPORTIONAL AND ARE FULLY DIMENSIONED.
- 5) ALL DIMENSIONS ARE SHOWN IN MILLIMETERS UNLESS OTHERWISE NOTED.

# BILL OF MATERIAL

QTY	DESCRIPTION	ASTM DESIGNATION
34	THREE RAIL POST	A572 GRADE 50
2	76 x 127 x 6.4 RAIL @ 9.140m	A500 GRADE B
2	76 x 127 x 6.4 RAIL @ 9.741m	A500 GRADE B
4	76 x 127 x 6.4 RAIL @ 7.303m	A500 GRADE B
2	76 x 127 x 6.4 RAIL @ 6.079m (USE 21' 10" "E")	A500 GRADE B
8	152 x 152 x 4.8 RAIL @ 9.741m	A500 GRADE B
8	152 x 152 x 4.8 RAIL @ 7.303m	A500 GRADE B
4	152 x 152 x 4.8 RAIL @ 6.679m (USE 23' 10" "E")	A500 GRADE B
8	108 x 54 FIX. SPL. BAR @ 686mm	A572 GRADE 50
16	127 x 127 x 7.9 FIX. SPL. TUBE @ 686mm	A500 GRADE B / A36
136	25 Ø x 304.8 [12"] ANCHOR STUD (STAINLESS STEEL)	(NOT SUPPLIED BY ELDERLEE, INC.)
544	25 Ø NUTS (STAINLESS STEEL)	(NOT SUPPLIED BY ELDERLEE, INC.)
136	25 Ø FLAT WASHERS (STAINLESS STEEL)	(NOT SUPPLIED BY ELDERLEE, INC.)
136	M22 x 200 ROUND HEAD BOLT, NUT, SQ. W & L.W.	A449, A563, & ASME B18.21.1
34	M20 x 203 LG HEX. BOLT, NUT, 2-F.W. & L.W.	A325, A563, F436, & ASME B18.21.1
68	M20 x 70 LG HEX. BOLT, NUT, 2-F.W. & L.W.	A325, A563, F436, & ASME B18.21.1
64	M20 x 190 LG HEX. BOLT, NUT, & 2-F.W.	A325, A563, & F436
32	M20 x 115 LG HEX. BOLT, NUT, & 2-F.W.	A325, A563, & F436
34	L127 x 127 x 15.9 RAILING ANGLE	A36
34	350 x 10 x 250 ANCHOR PLATES (STAINLESS STEEL)	(NOT SUPPLIED BY ELDERLEE, INC.)

BASE PLATE NOT LISTED

GO TO 50

ITEM #: 900.640

GEN CONTR: F.R. LAFAYETTE, INC.

SHEET 2 OF 4

APPROVED BY:

BRIDGE RAIL DETAILS SHEET

EAST MONTPELIER BRIF 028-3(36)  
VT AOT CONTRACT ID 98B254  
G.C. WINTERSET INC

RECEIVED

OK'D BY: OK'D BY: kmh

JUL 06 2009

APPROVED BY: APPROVED BY: As Noted  
BY: kmh DATE: 7/1/09

R NO.	DATE	DESCRIPTION	BY	R NO.	DATE	DESCRIPTION	BY

ELDERLEE, INC  
OAKS CORNERS, NEW YORK 14518  
E-Mail: dlong@elderlee.com  
Tel 315-789-6670 Fax 315-789-6615

DRAWN	EP	6/24/09
CHECKED	DL	6/24/09
APPROVED		
SCALE	SCHMATIC	
DRAWING NO.	EM09-049 3R	