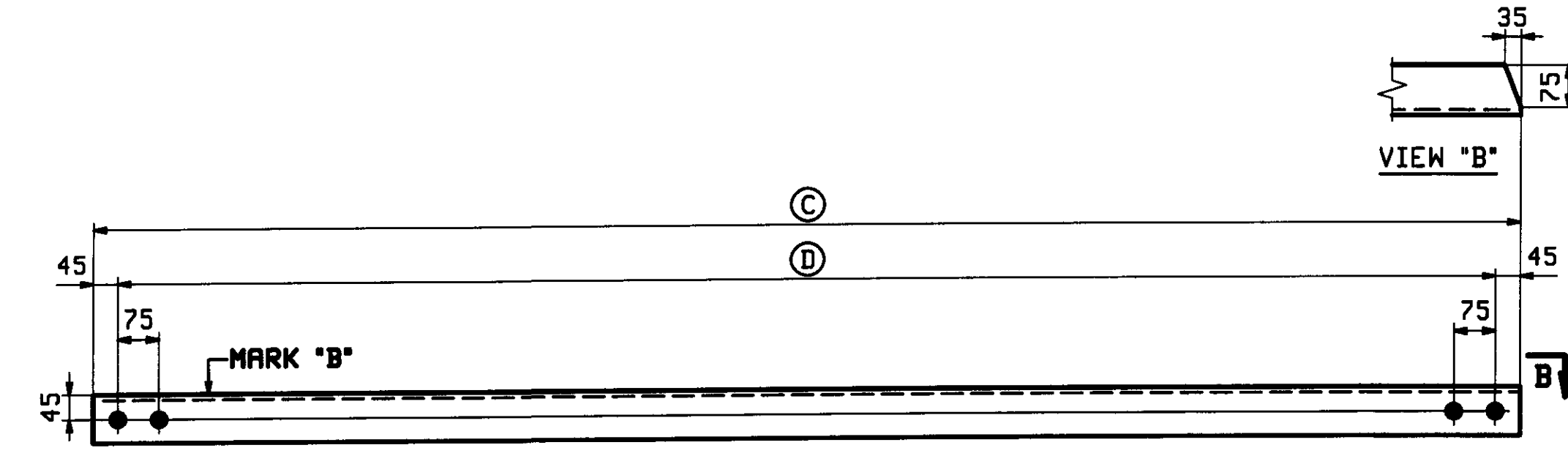


DIAGONALS ~ MARK "A"

LOOKING UP-STATION
FS DIAGONAL

MARK "A"	QTY	(A)	(B)	
6CF1-A	3	3276	3186	DROPS 97-93 (LINES 4-5)
6CF2-A	2	3271	3181	DROP 83 (LINES 4-5)
6CF3-A	3	3262	3172	DROPS 58-62 (LINES 3-4)
6CF4-A	2	3258	3168	DROP 48 (LINES 3-4)
6CF5-A	3	3218	3128	DROPS 58-62 (LINES 2-3)
6CF6-A	2	3214	3124	DROP 72 (LINES 2-3)
6CF7-A	3	3206	3116	DROPS 93-97 (LINES 1-2)
6CF8-A	2	3202	3112	DROP 107 (LINES 1-2)



DIAGONALS ~ MARK "B"

LOOKING UP-STATION
NS DIAGONAL

MARK "B"	QTY	(C)	(D)	
6CF1-B	3	3206	3116	DROPS 97-93 (LINES 4-5)
6CF2-B	2	3210	3120	DROP 83 (LINES 4-5)
6CF3-B	3	3218	3128	DROPS 58-62 (LINES 3-4)
6CF4-B	2	3222	3132	DROP 48 (LINES 3-4)
6CF5-B	3	3262	3172	DROPS 58-62 (LINES 2-3)
6CF6-B	2	3267	3177	DROP 72 (LINES 2-3)
6CF7-B	3	3276	3186	DROPS 93-97 (LINES 1-2)
6CF8-B	2	3281	3191	DROP 107 (LINES 1-2)

ABM INFO		BILL OF MATERIAL				JOB NO.		DRAWING NO.		REV.
						400		6		
PAGE	LINE	MARK	QTY	MARK	MATERIAL	LENGTH	REMARKS	WT	PROCUREMENT	NOTES
					DIAGONALS					
2	G	6CF1-A	3		L 89x89x9 5	3 276		41 kg		
2	G	6CF2-A	2		L 89x89x9 5	3 271		41 kg		
2	G	6CF3-A	3		L 89x89x9 5	3 262		41 kg		
2	G	6CF4-A	2		L 89x89x9 5	3 258		41 kg		
2	H	6CF5-A	3		L 89x89x9 5	3 218		41 kg		
2	H	6CF6-A	2		L 89x89x9 5	3 214		40 kg		
2	H	6CF7-A	3		L 89x89x9 5	3 206		40 kg		
2	H	6CF8-A	2		L 89x89x9 5	3 202		40 kg		
2	H	6CF1-B	3		L 89x89x9 5	3 206		40 kg		
2	H	6CF2-B	2		L 89x89x9 5	3 210		40 kg		
2	H	6CF3-B	3		L 89x89x9.5	3 218		41 kg		
2	H	6CF4-B	2		L 89x89x9.5	3 222		41 kg		
2	G	6CF5-B	3		L 89x89x9 5	3 262		41 kg		
2	G	6CF6-B	2		L 89x89x9 5	3 267		41 kg		
2	G	6CF7-B	3		L 89x89x9 5	3 276		41 kg		
2	G	6CF8-B	2		L 89x89x9 5	3 281		41 kg		

RECEIVED
 OK'D BY: JFL OK'D BY: J
 MAY 2 2009
 APPROVED As Noted
 BY: KMH DATE 6/1/09

FOR GENERAL NOTES SEE DRAWING GNI.

REV. DATE		REMARKS		DWN	CHK	APVL	SHOP
MATERIAL		SURFACE PREP. & PAINT		HOLES		SHOP BOLTS	
M270M-345W		SEE GNI		15 16			
DESCRIPTION: CROSSFRAMES							
CASCO BAY STEEL STRUCTURES, INC. 75 SPRING HILL ROAD SACO, MAINE 04072 PHONE (207) 282-7360 FAX. (207) 282-1179							
STRUCTURE: U.S. ROUTE 2 OVER WINOOSKI RIVER BRIDGE NO. 74 COUNTY OF WASHINGTON				DRAWN	DATE		
				JTB	04/06		
				CHKD	DATE		
				ELC	04/06		
LOCATION: TOWN OF EAST MONTPELIER, VERMONT				JOB NO.	DWG NO.		
PROJ NO. BRF 028-3 (36)				400	6		
CUSTOMER: WINTERSET, INC						REV.	△