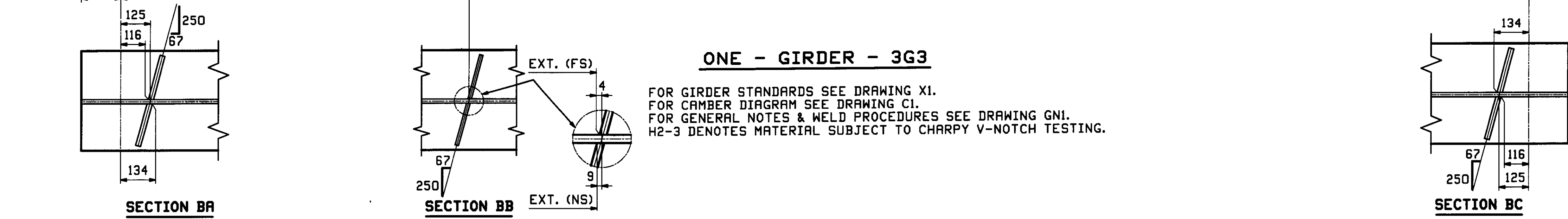
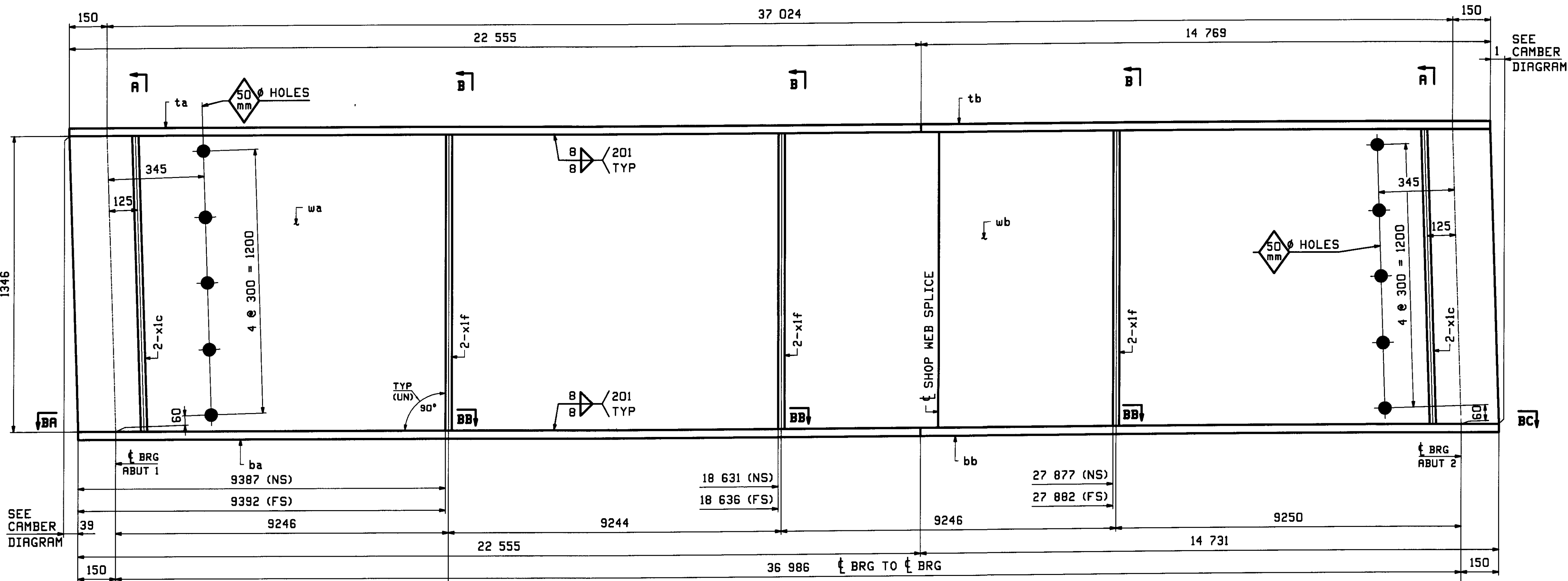
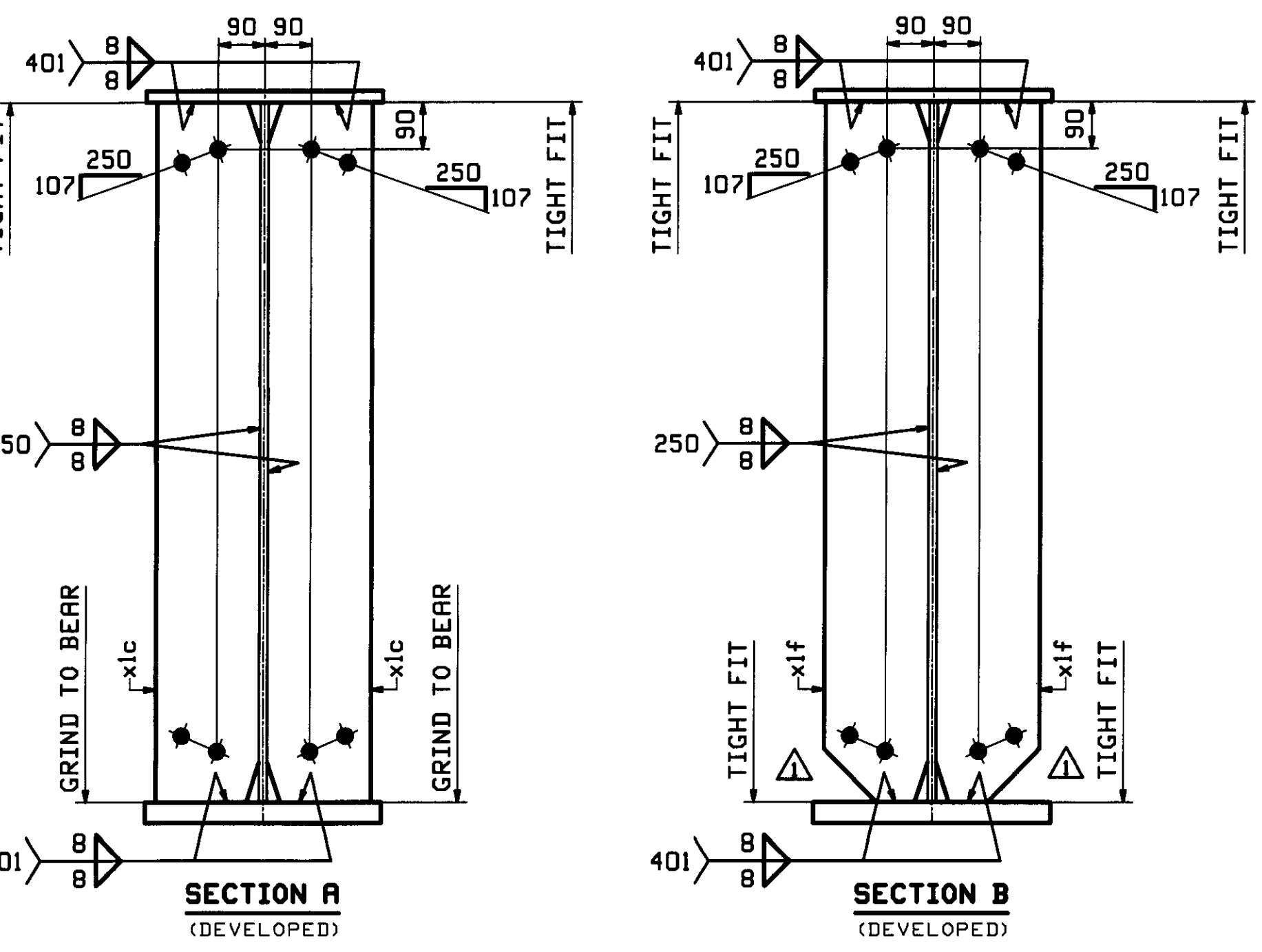
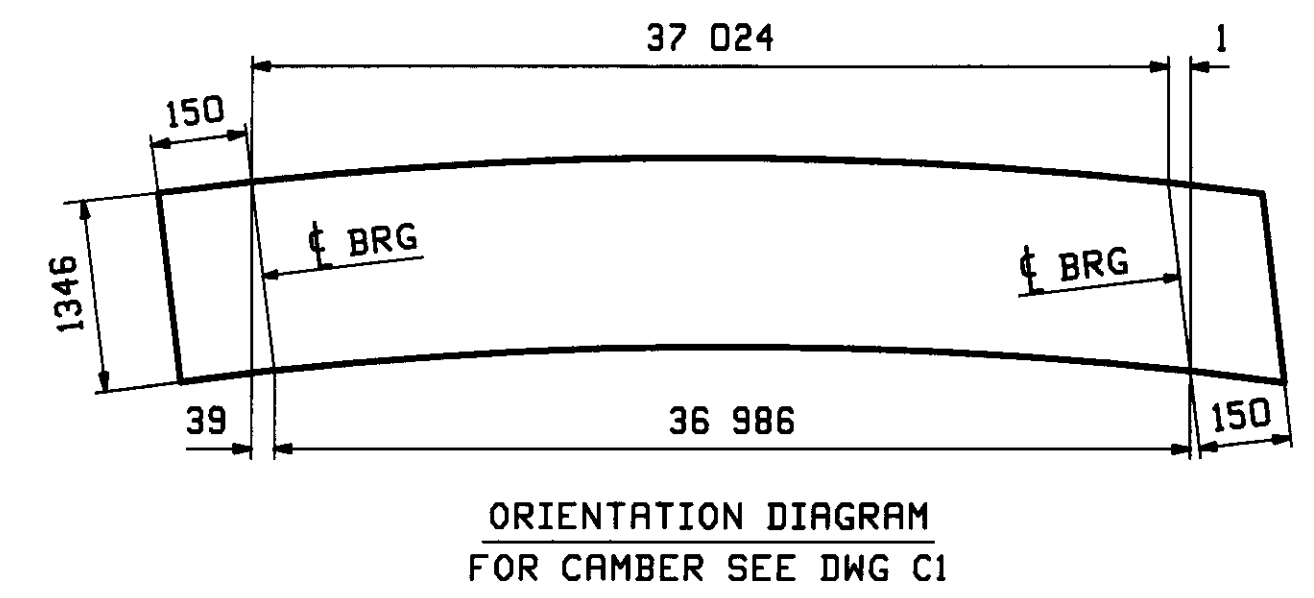


ABM INFO		SHIP		BILL OF MATERIAL				JOB NO.	DRAWING NO.	REV.
								400	3	△
PAGE	LINE	MARK	QTY	MARK	MATERIAL	LENGTH		REMARKS	WT	PROCUREMENT NOTES
						m	mm			
		3G3	1		GIRDER				15087 kg 33261 lbs	
1	J		1	ua	PL 16x1346	22	900	(M270M-345HT2)	(H2-3)	
1	L		1	ub	PL 16x1346	14	444	(M270M-345HT2)	(H2-3)	
1	E		1	ta	PL 22x458	22	555	(M270M-345HT2)	(H2-3)	
1	G		1	tb	PL 22x458	14	769	(M270M-345HT2)	(H2-3)	
1	A		1	ba	PL 41x458	22	555	(M270M-345HT2)	(H2-3)	
1	C		1	bb	PL 41x458	14	731	(M270M-345HT2)	(H2-3)	
2	B		4	xlc	PL 19x200	1	346	(M270M-345HT2)	(H2-3)	MIE
2	C		6	xlf	PL 13x200	1	346			



ONE - GIRDER - 3G3
 FOR GIRDER STANDARDS SEE DRAWING X1.
 FOR CAMBER DIAGRAM SEE DRAWING C1.
 FOR GENERAL NOTES & WELD PROCEDURES SEE DRAWING GNI.
 H2-3 DENOTES MATERIAL SUBJECT TO CHARPY V-NOTCH TESTING.



RECEIVED
 OK'D BY [Signature] OK'D BY [Signature]
 MAY 20 2009
 APPROVED BY [Signature]
 BY KMH DATE [Signature]

△	5/19/2009	APPROVAL COMMENTS	ZAD	ELC	MAY 27 2009	
0					APR 15 2009	
REV.	DATE	REMARKS	DWN	CHK	APVL	SHOP
		MATERIAL				SHOP BOLTS
		M270M-345M(LUN)				NONE
DESCRIPTION:		GIRDER - 3G3				
CASCO BAY STEEL STRUCTURES, INC. 75 SPRING HILL ROAD SACO, MAINE 04072 PHONE (207) 282-7360 FAX. (207) 282-1179						
STRUCTURE: U.S. ROUTE 2 OVER WINOOSKI RIVER PRINCIPAL ARTERIAL BRIDGE NO 74 COUNTY OF WASHINGTON				DRAWN	DATE:	
				JTB	04/03	
				CHKD	DATE	
				ELC	04/06	
LOCATION: TOWN OF EAST MONTPELIER, VERMONT				JOB NO.	DWG NO.	
PROJ NO. BRF 028-3 (36)				400	3	
CUSTOMER: WINTERSET, INC					REV. △	

ELC - Mod. May 20, 2009 07:38:18 PM C:\msd\p04\2827360\31.dwg