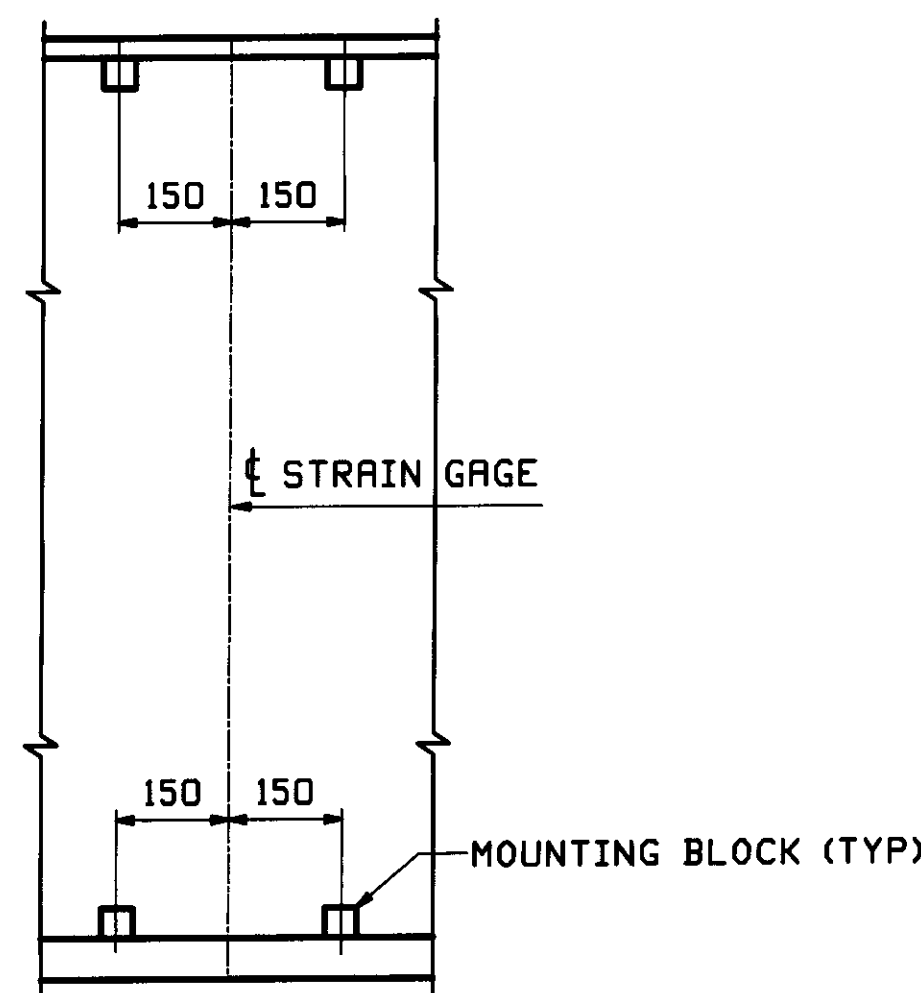


FRAMING PLAN



ELEVATION AT STRAIN GAGES

STRAIN GAGES NOT SHOWN

NOTE:
SEE DWGS 1 & 5 FOR REQUIRED LOCATIONS
OF STRAIN GAGE MOUNTING BLOCKS.

| FIELD BOLT LIST | | | | | | | | | | A490 Type 3 BOLTS | |
|-----------------|----------|-----------|----------|-----------------|------|----------------------------|-----------|------------------------------|---|---------------------------|--|
| LINE | NO REQ'D | BOLT DIAM | BOLT LEN | BOLTS # OF CONN | GRIP | THICKNESS OF PCS CONNECTED | WASH CODE | PIECES CONNECTED AND REMARKS | | | |
| 1 | | | | | | | | INT. CROSSFRAMES | | | |
| 2 | 64 | 7/8 | 2 1/2 | 2 | 32 | 29 | 10 | 19 | 1 | DIAGONAL TO BRG STIFFENER | |
| 3 | 96 | 7/8 | 2 1/2 | 2 | 48 | 23 | 10 | 13 | 1 | DIAGONAL TO INT STIFFENER | |

WASHER CODES
1 1 Hard Flat Washer

| FIELD BOLT SUMMARY | | | | | | EXACT COUNT - NONE EXTRA | |
|--------------------|-------------|---------------------------------|-------------|----------|--------------|--------------------------|--|
| LINE | NO OF BOLTS | BOLT DIAM | TYPE | BOLT LEN | ACTUAL COUNT | REMARKS | |
| 1 | 96 | 7/8 | A490 Type 3 | 2 1/2 | 96 | | |
| 2 | 64 | 7/8 | A490 Type 3 | 2 1/2 | 64 | | |
| 3 | | | | | | | |
| 4 | 160 | Hard Flat Washers for 7/8" BOLT | | F436-3 | | | |
| 5 | | | | | | | |
| 6 | | | | | | | |
| 7 | | | | | | | |

RECEIVED
OK'D BY [Signature] OK'D BY [Signature]
MAY 29 2009
APPROVED [Signature]
BY KMH DATE 6/10

| 5/20/2009 | ADDED STRAIN GAGE LOCATION & ELEVATION VIEW | ZAD | ELC | MAY 27 2009 | | |
|---|---|----------------------|-----|-------------|-------------|------------------|
| 0 | | | | APR 15 2009 | | |
| REV. | DATE | REMARKS | DWN | CHK | APVL | SHOP |
| | | SURFACE PREP & PAINT | | | | SHOP BOLTS |
| DESCRIPTION: FRAMING PLAN & FIELD BOLTS | | | | | | |
| CASCO BAY STEEL STRUCTURES, INC. 75 SPRING HILL ROAD SACO, MAINE 04072 PHONE (207) 282-7360 FAX. (207) 282-1179 | | | | | | |
| STRUCTURE: U.S. ROUTE 2 OVER WINOOSKI RIVER PRINCIPAL ARTERIAL BRIDGE NO 74 COUNTY OF WASHINGTON | | | | | DRAWN: JTB | DATE: 04/03 |
| | | | | | CHKD: ELC | DATE: 04/06 |
| LOCATION: TOWN OF EAST MONTPELIER, VERMONT | | | | | JOB NO. 400 | DWG NO. E1 |
| PROJ NO. BRF 028-3 (36) | | | | | | REV. [Signature] |
| CUSTOMER: WINTERSET, INC | | | | | | |

ELC: [Signature] DATE: 5/20/09