

FOR EROSION CONTROL DETAILS
SEE ROW SHEET 13 & 15 OF 20

RUNNALLS, DONALD S.
& ROSEMARIE A.

WATSON,
BRUCE G. &
BARBARA L.

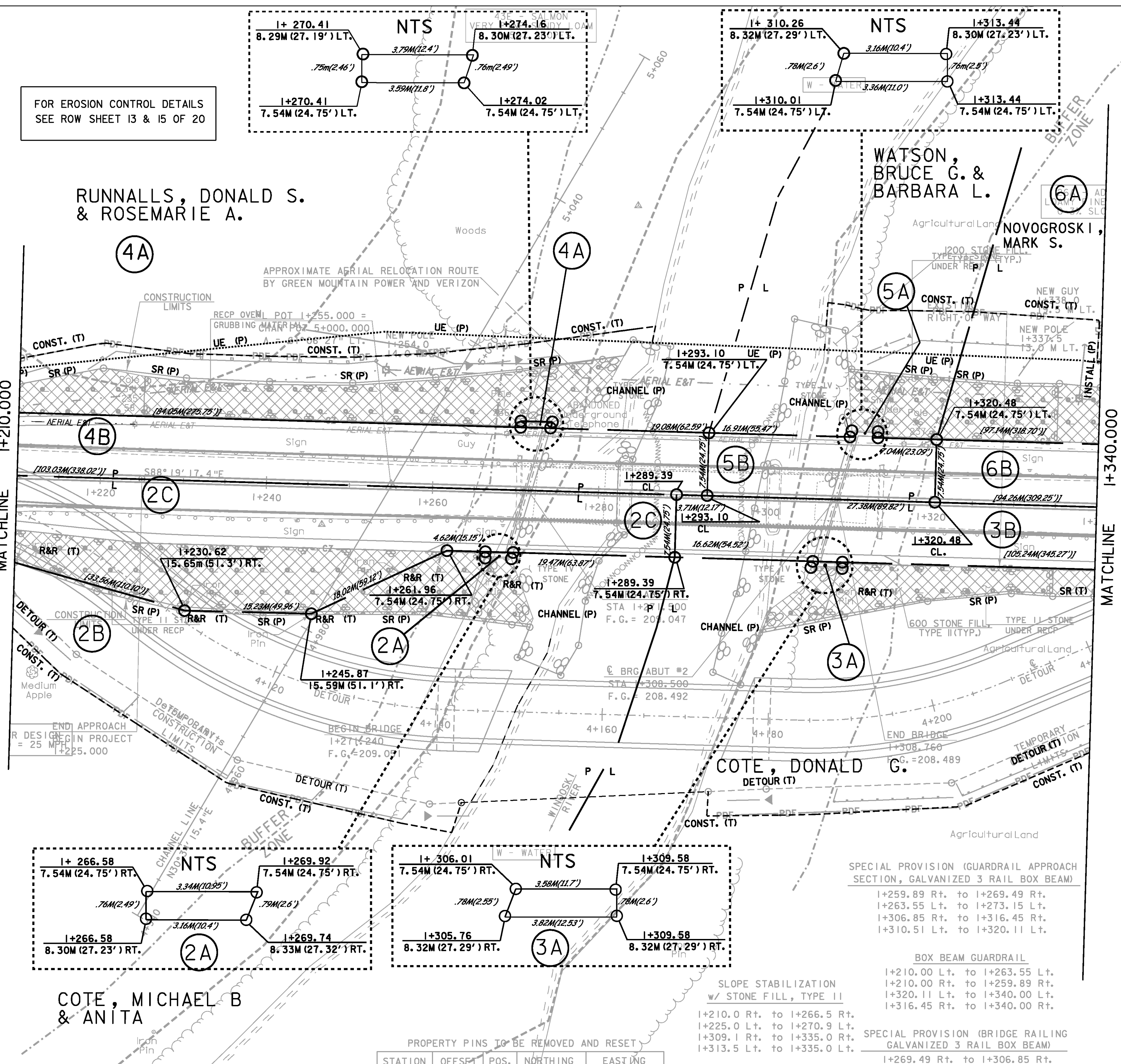
NOVOGROSKI,
MARK S.

COTE, DONALD G.

COTE, MICHAEL B
& ANITA

TO ROW SHEET 18 OF 20
MATCHLINE I+210.000

MATCHLINE I+340.000
TO ROW SHEET 20 OF 20



Existing Bridge Data
1930 Conc. T Beam
3-span = 145'
Roadway 20'-0'
Waterway 2600 SF

LINES SHOWN ON THIS PLAN AS EXISTING
PROPERTY LINES P/L ARE BELIEVED TO
BE ACCURATE BUT SHOULD NOT BE RELIED
UPON FOR PURPOSES UNRELATED TO THE
STATE OF VERMONT'S ACQUISITION OF LAND
AND RIGHTS FOR THIS PROJECT.

SPECIAL PROVISION (GUARDRAIL APPROACH
SECTION, GALVANIZED 3 RAIL BOX BEAM)
I+259.89 Rt. to I+269.49 Rt.
I+263.55 Lt. to I+273.15 Lt.
I+306.85 Rt. to I+316.45 Rt.
I+310.51 Lt. to I+320.11 Lt.

BOX BEAM GUARDRAIL
I+210.00 Lt. to I+263.55 Lt.
I+210.00 Rt. to I+259.89 Rt.
I+320.11 Lt. to I+340.00 Lt.
I+316.45 Rt. to I+340.00 Rt.

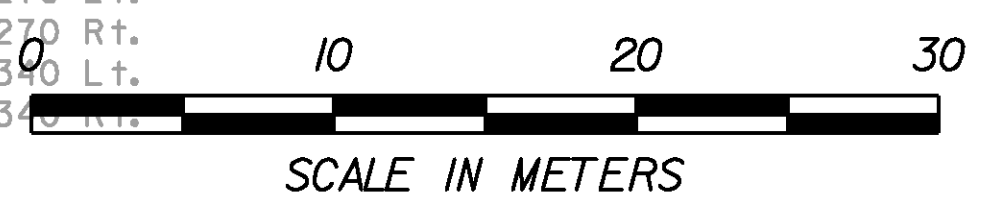
SLOPE STABILIZATION
w/ STONE FILL, TYPE II
I+210.0 Rt. to I+266.5 Rt.
I+225.0 Lt. to I+270.9 Lt.
I+309.1 Rt. to I+335.0 Rt.
I+313.5 Lt. to I+335.0 Lt.

SPECIAL PROVISION (BRIDGE RAILING
GALVANIZED 3 RAIL BOX BEAM)
I+269.49 Rt. to I+306.85 Rt.
I+273.15 Lt. to I+310.51 Lt.

PROPERTY PINS TO BE REMOVED AND RESET

STATION	OFFSET	POS.	NORTHING	EASTING
I+210.13	10.53	RT.	196524.241	502769.478
I+230.63	15.69	RT.	196518.492	502789.821
I+245.87	15.62	RT.	196518.115	502805.051
I+256.26	10.42	RT.	196523.005	502815.593
I+269.18	10.34	RT.	196522.701	502828.197
I+309.55	10.24	RT.	196521.627	502868.842

REMOVAL AND DISPOSAL
OF EXISTING GUARDRAIL
I+210 Lt. to I+270 Lt.
I+210 Rt. to I+270 Rt.
I+314 Lt. to I+330 Lt.
I+314 Rt. to I+330 Rt.



**FOR R.O.W.
USE ONLY**

PLAN SHEET

PROJECT NAME: EAST MONTPELIER
PROJECT NUMBER: BRF 028-3 (36)
FILE NAME: /str5/98b254/sb254bdr.dgn PLOT DATE: 03-FEB-2009
PROJECT LEADER: K. HIGGINS DRAWN BY: R. PELLETT
DESIGNED BY: J. LACROIX CHECKED BY: J. LACROIX
R.O.W. SHEET 18 OF 20 SHEETS SHEET 54 OF 68