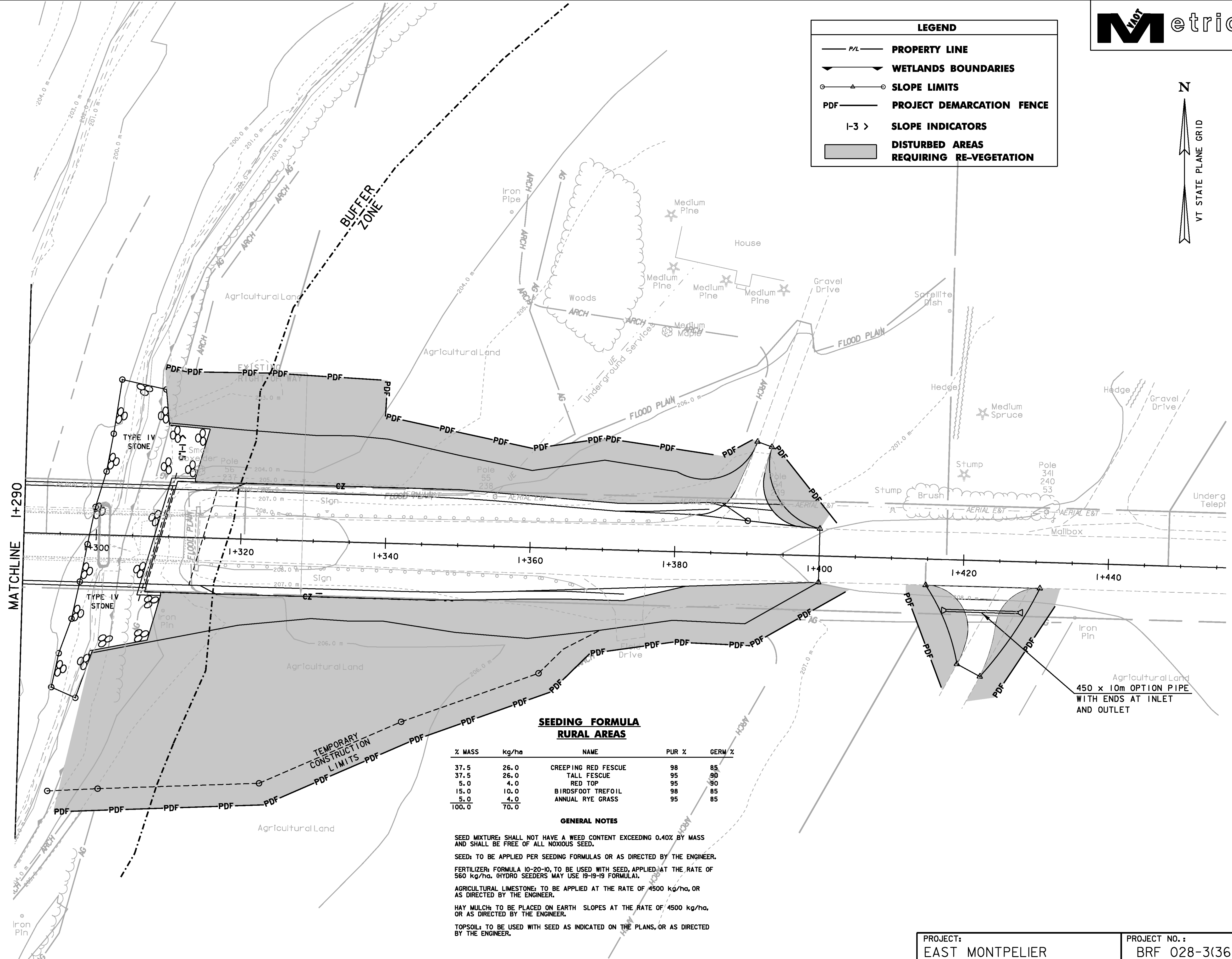
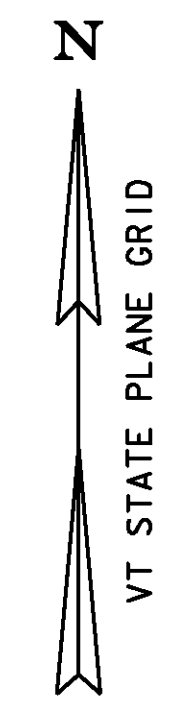




LEGEND

- P/L **PROPERTY LINE**
- WETLANDS BOUNDARIES**
- SLOPE LIMITS**
- PDF **PROJECT DEMARCATION FENCE**
- I-3 > **SLOPE INDICATORS**
- DISTURBED AREAS REQUIRING RE-VEGETATION**



SEEDING FORMULA RURAL AREAS

% MASS	kg/ha	NAME	PUR %	GERM %
37.5	26.0	CREeping RED FESCUE	98	85
37.5	26.0	TALL FESCUE	95	90
5.0	4.0	RED TOP	95	90
15.0	10.0	BIRDSFOOT TREFOIL	98	85
5.0	4.0	ANNUAL RYE GRASS	95	85
100.0	70.0			

GENERAL NOTES

SEED MIXTURE: SHALL NOT HAVE A WEED CONTENT EXCEEDING 0.40% BY MASS AND SHALL BE FREE OF ALL NOXIOUS SEED.

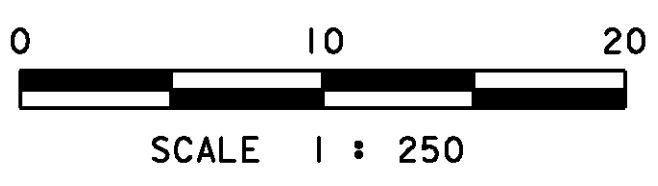
SEED: TO BE APPLIED PER SEEDING FORMULAS OR AS DIRECTED BY THE ENGINEER.

FERTILIZER: FORMULA 10-20-10, TO BE USED WITH SEED, APPLIED AT THE RATE OF 560 kg/ha. (HYDRO SEEDERS MAY USE 19-19-19 FORMULA).

AGRICULTURAL LIMESTONE: TO BE APPLIED AT THE RATE OF 4500 kg/ha, OR AS DIRECTED BY THE ENGINEER.

HAY MULCH: TO BE PLACED ON EARTH SLOPES AT THE RATE OF 4500 kg/ha, OR AS DIRECTED BY THE ENGINEER.

TOPSOIL: TO BE USED WITH SEED AS INDICATED ON THE PLANS, OR AS DIRECTED BY THE ENGINEER.



DATUM

VERTICAL NAVD 88

HORIZONTAL NAD 83 (96)

PROJECT: EAST MONTPELIER	PROJECT NO.: BRF 028-3(36)
DESIGN FILE NAME: str\sb254epsc bdr. dgn	PLOT DATE: 03-FEB-2009
IPARM FILE NAME: sb254epsc fin 2. i	DRAWN BY: R. PELLETT
DESIGNED BY: J. LACROIX	CHECKED BY: J. LACROIX
SQUAD LEADER: K. HIGGINS	SHEET: 48 OF 68
EPSC FINAL CONDITIONS #2	