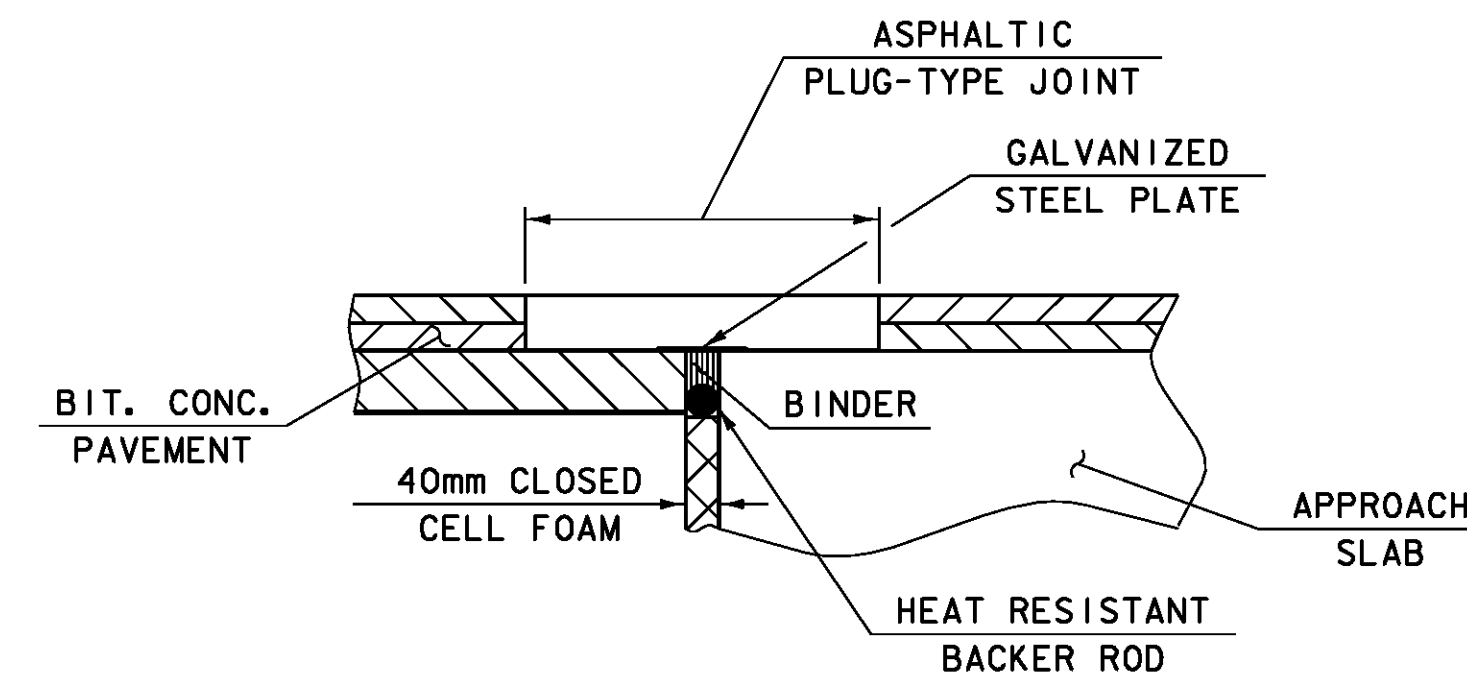


ASPHALTIC PLUG BRIDGE JOINT



ASPHALTIC PLUG-TYPE
JOINT DETAIL
(NOT TO SCALE)

INSTALLATION

1. THE JOINT SHALL BE LOCATED CENTRALLY OVER THE APPROACH SLAB EXPANSION GAP MARKED OUT TO THE MANUFACTURER'S RECOMMENDED WIDTH.
2. THE APPROACH SLAB SHALL BE NOTCHED AS SHOWN ON THE PLANS.
3. THE JOINT AREA SHALL BE BLAST CLEANED OF DEBRIS AND ASPHALT. THE JOINT AREA SHALL BE THOROUGHLY DRIED USING HOT COMPRESSED AIR PRIOR TO APPLYING BINDER MATERIAL.
4. SPALLED AND DEFECTIVE CONCRETE SHALL BE REPAIRED WITH AN APPROVED MATERIAL AS AGREED UPON BY THE ENGINEER.
5. PROPERLY SIZED HEAT RESISTANT BACKER ROD SHALL BE PLACED IN THE MOVEMENT GAP ALLOWING FOR 25 mm +/- OF BINDER ABOVE THE ROD.
6. THE BINDER MATERIAL SHALL BE HEATED AND PLACED AS RECOMMENDED BY THE MANUFACTURER.
7. PLACE 6 mm THICK BY 205 mm WIDE SECTIONS OF STEEL PLATE OVER THE CENTER OF THE MOVEMENT GAP. SECURE PLATES FROM MOVING BY INSERTING LOCATING PINS THROUGH THE PRE-STAMPED HOLES INTO BACKER ROD AND COVER WITH HOT BINDER.
 - a. THE STEEL PLATES MAY BE OMITTED WHERE THE APPROACH SLAB IS COVERED WITH A STONE BASE OR BITUMINOUS PAVEMENT AND VERTICAL MOVEMENT OF THE PLATES MIGHT OCCUR.
8. THE BINDER MATERIAL AND AGGREGATE SHALL BE HEATED AND MIXED AS RECOMMENDED BY THE MANUFACTURER.
9. THE INSTALLATION OF MATERIAL, COMPACTION, AND TOPCOATING SHALL BE AS RECOMMENDED BY THE MANUFACTURER.
10. IMMEDIATELY AFTER TOPCOATING, AN ANTI-SKID MATERIAL SHALL BE CAST OVER THE JOINT TO REDUCE THE RISK OF TRACKING.
11. JOINT SHALL BE PROTECTED FROM TRAFFIC UNTIL THE MATERIAL HAS COOLED TO 125°F +/-.

WEATHER LIMITATIONS.

BINDER MATERIAL SHALL BE APPLIED ONLY WHEN THE FOLLOWING CONDITIONS PREVAIL:

- (a) THE AMBIENT AIR TEMPERATURE IS AT LEAST 50°F AND RISING.
- (b) THE ROAD SURFACE IS SUFFICIENTLY DRY.
- (c) WEATHER CONDITIONS OR OTHER CONDITIONS ARE FAVORABLE AND ARE EXPECTED TO REMAIN SO FOR THE PERFORMANCE OF SATISFACTORY WORK.

PROJECT: EAST MONTPELIER	PROJECT NO.: BRF 028-3(36)
DESIGN FILE NAME: /98b254/str/sb254sup.dgn	PLOT DATE: 03-FEB-2009
IPARM FILE NAME: sb254jtd.t	DRAWN BY: R. PELLETT
DESIGNED BY: J. LACROIX	CHECKED BY: J. LACROIX
SQUAD LEADER: K. HIGGINS	SHEET: 35 OF 68
JOINT DETAIL	