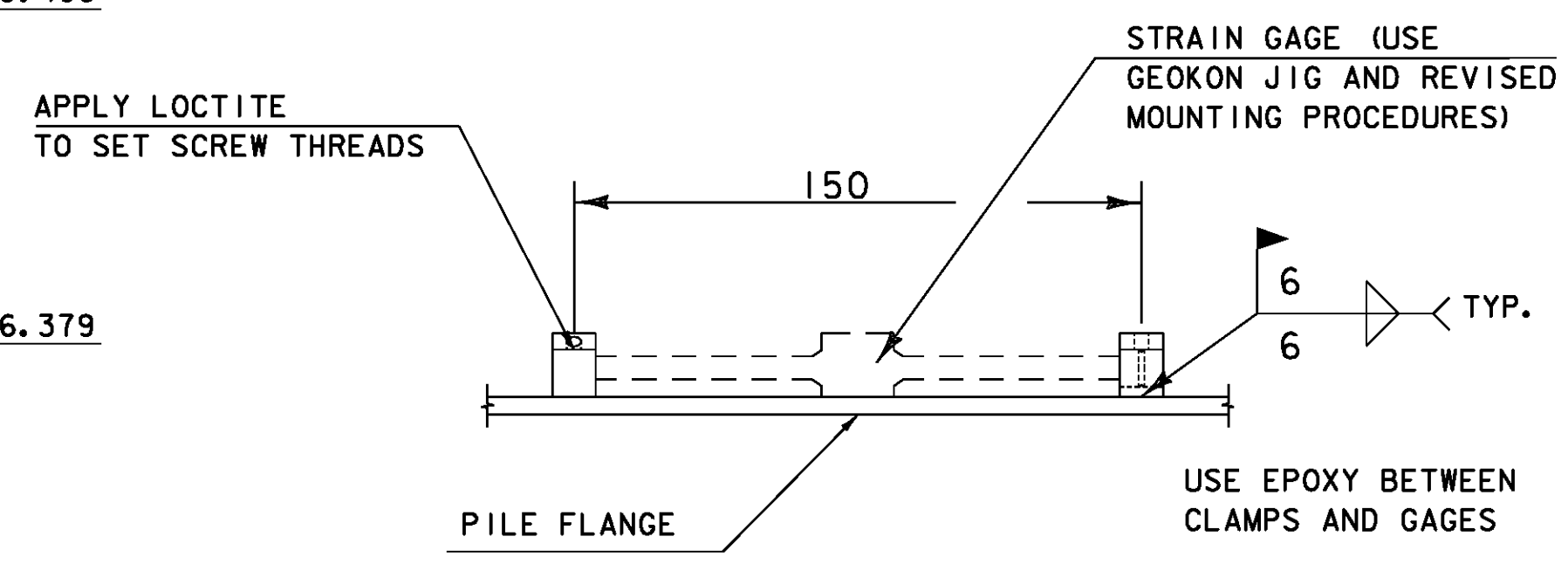
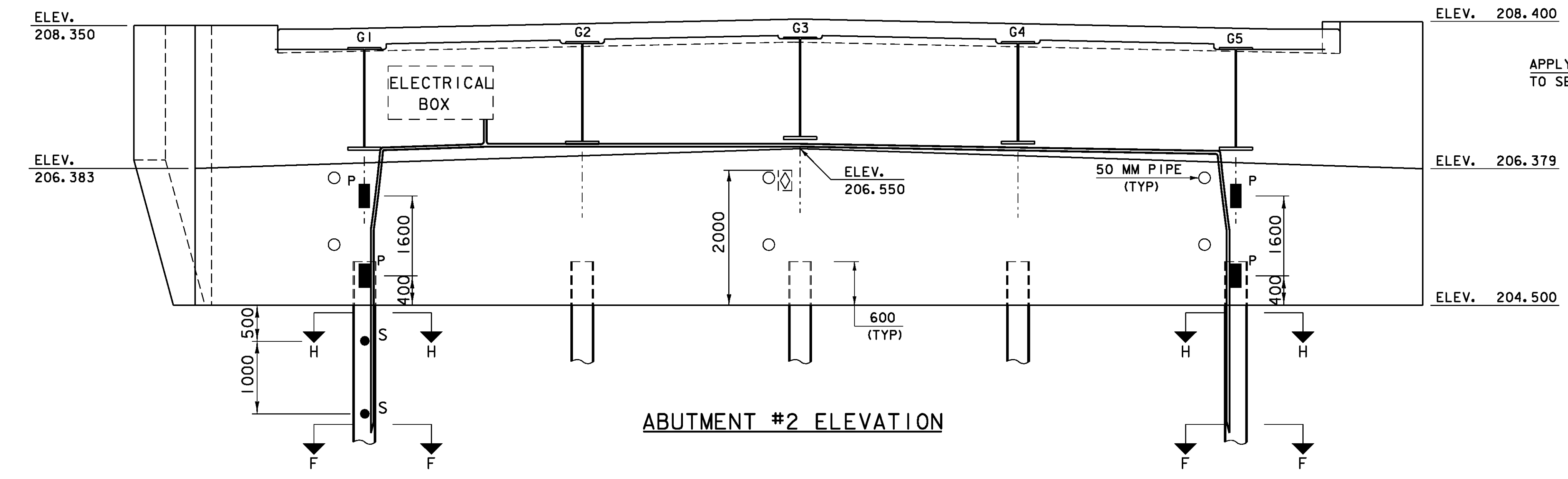
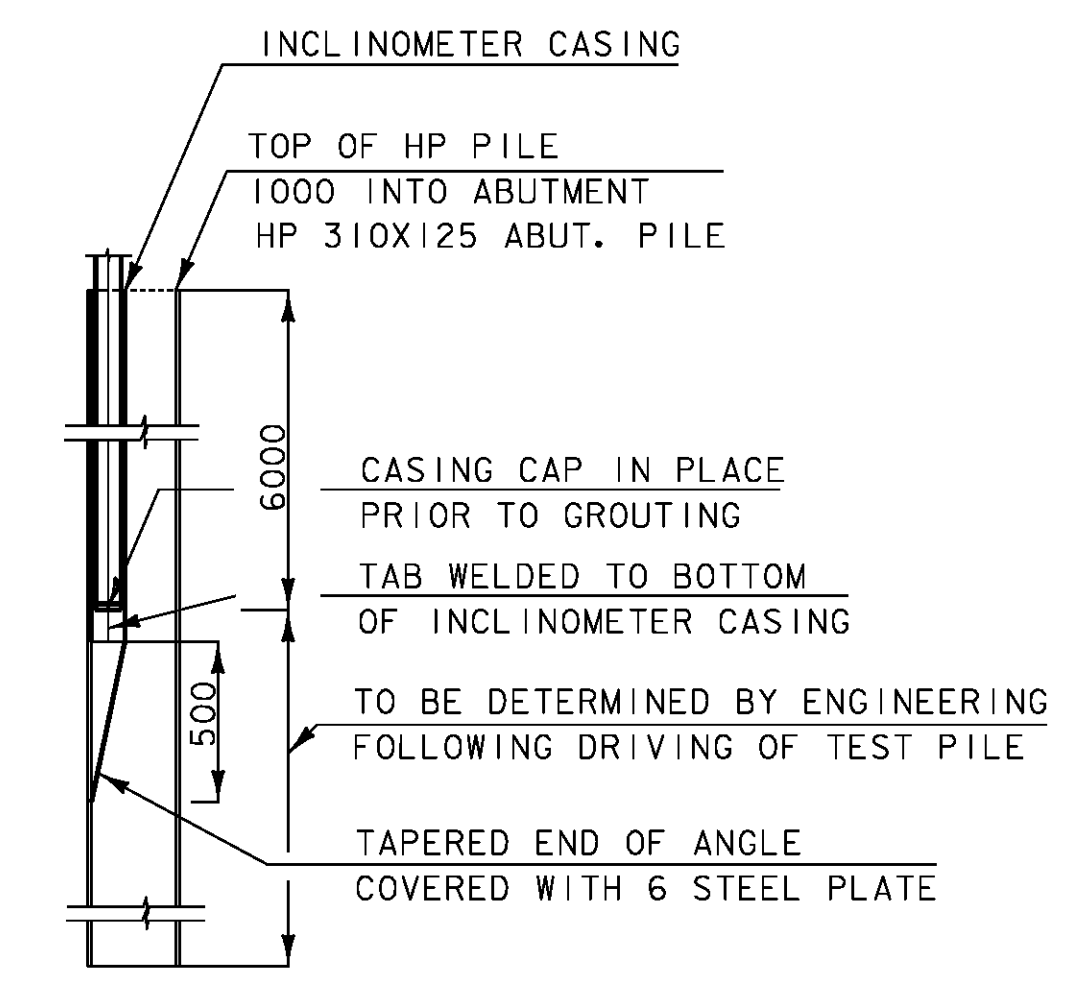
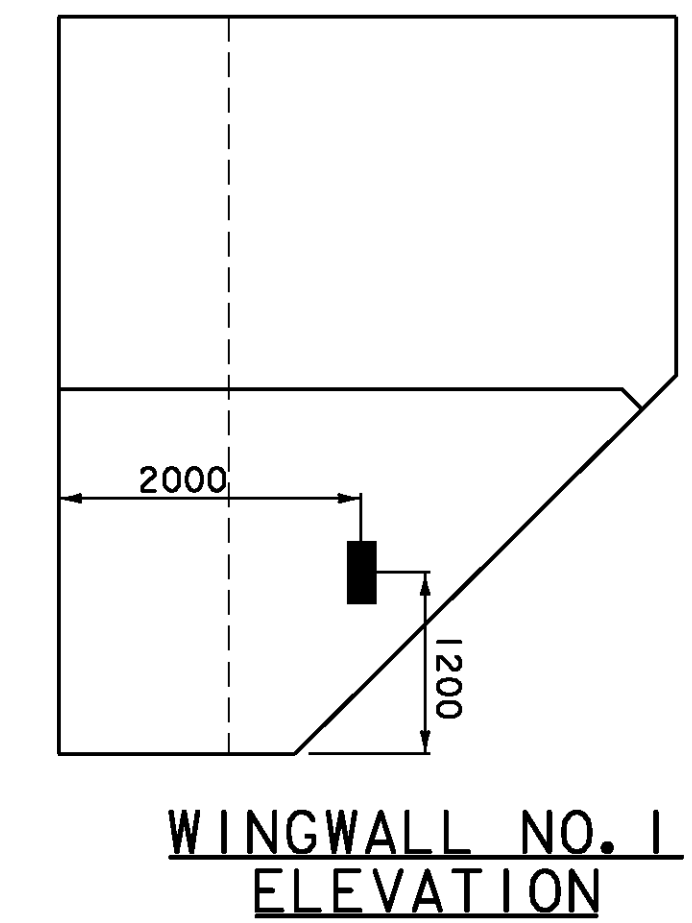
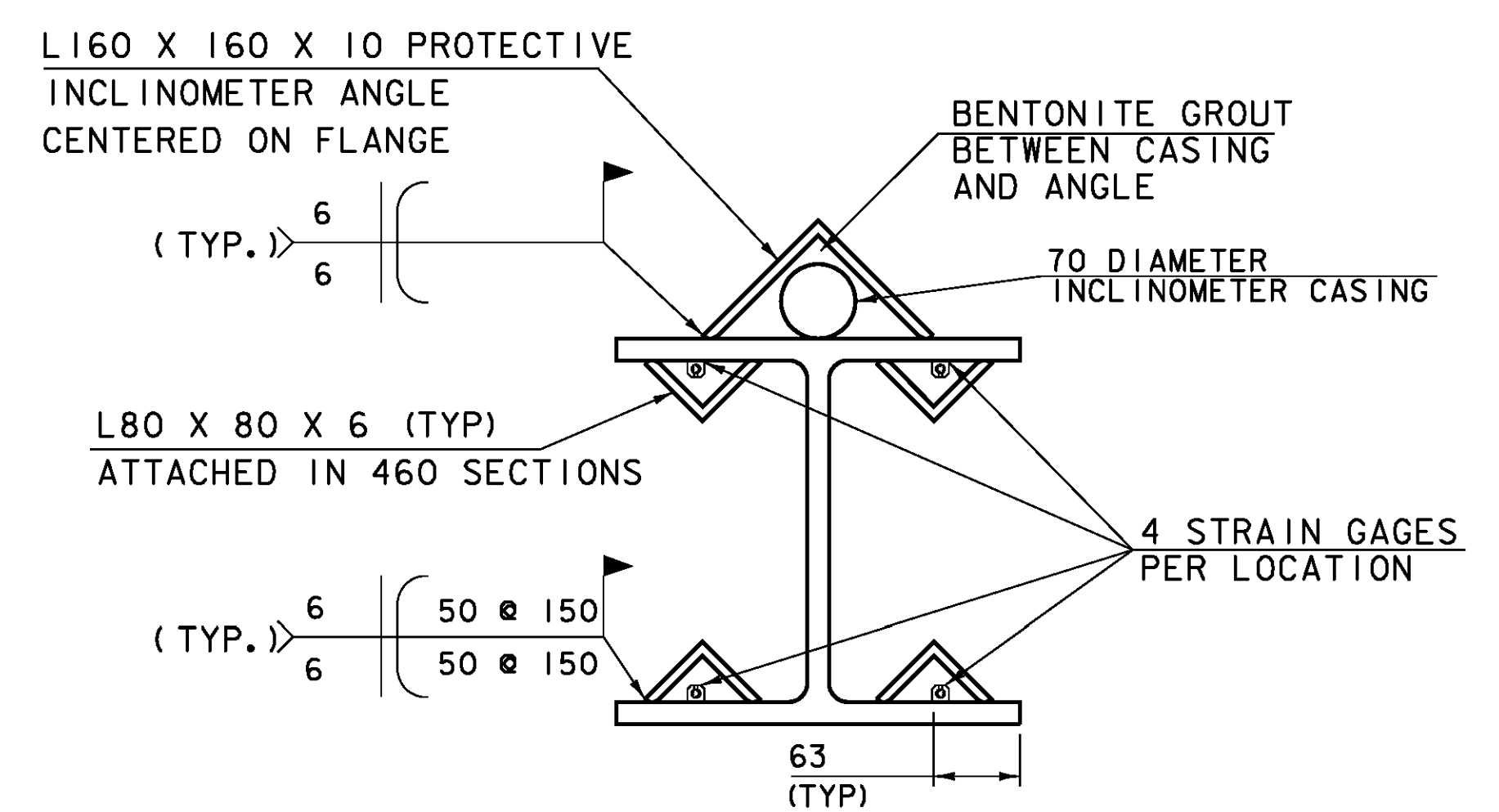
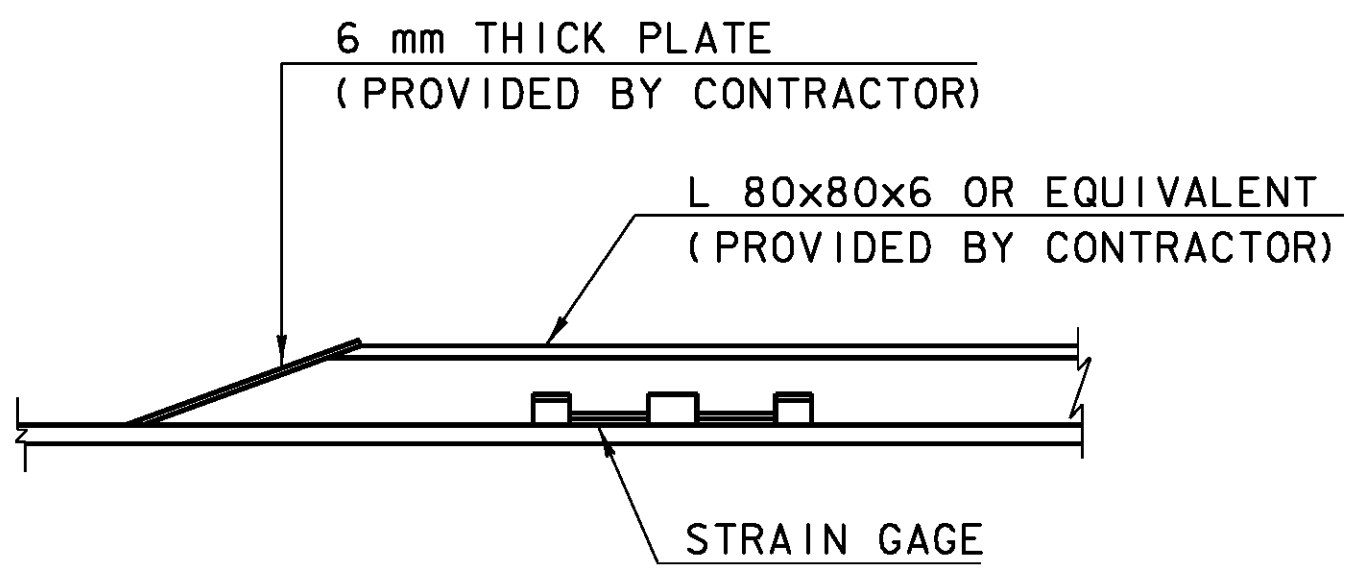


■ GEOKON MODEL 4815 EARTH PRESSURE CELL - PROVIDED BY UMSS ATTACH PRESSURE CELL TO FORMWORK ON BACKFILLED FACE OF WALL. CABLING SHALL EITHER BE ROUTED OUTSIDE OF FORM WORK OR PLACED IN A BOX OUT PRIOR TO CONCRETE PLACEMENT.



- NOTES:**
- CONTRACTOR SHALL DRIVE PILES 1, 3 & 5 AT ABUTMENT 1 PRIOR TO DRIVING PILES 2 & 4. STRAIN GAUGES AND THE L 3"x3"x $\frac{3}{8}$ " (76x76x10) ARE INSTALLED AFTER THE PILES HAVE BEEN DRIVEN TO THE PROPER DEPTH.
 - ALL PRESSURE CELLS SHALL BE INSTALLED ON THE BACKFILLED SIDE OF THE ABUTMENT. PRESSURE CELL SHALL BE ATTACHED TO INSIDE OF CONCRETE FORMWORK PRIOR TO ABUTMENT CONCRETE PLACEMENT. CARE SHALL BE TAKEN TO ROUTE INSTRUMENTATION WIRING THROUGH FORM WORK.
 - THE FINAL LOCATION OF PVC TO BE APPROVED BY UMSS.
 - 6150 TILTMETERS TO BE PLACED IN CASING BY UMSS.
 - CONTRACTOR NOT TO PLACE UPPER ABUTMENT CONCRETE UNTIL TILTMETER READINGS ARE VERIFIED BY UMSS.
 - CONTRACTORS PLAN ON GROUT PROCEDURE TO BE APPROVED BY UMSS.
 - ALL ITEMS NOTED, "PROVIDED BY CONTRACTOR" SHALL BE INCIDENTAL TO PAY ITEM 900.645 SPECIAL PROVISION (BRIDGE INSTRUMENTATION)
 - THE CONTRACTOR SHALL PROVIDE A TOTAL OF 5 DAYS OF LAG TIME TO THE CONSTRUCTION SCHEDULE TO ACCOUNT FOR DELAYS ASSOCIATED WITH THE INSTALLATION, VERIFICATION AND/OR REPLACEMENT OF INSTRUMENTATION.
 - INCLINOMETER CASING CAN SWEEP A MAXIMUM OF 100 PER 1000



LEGEND:

- S STRAIN GAGE GEOKON MODEL NO. 4000 INSTALL 4 AT EACH LOCATION
- P GEOKON MODEL 4815 PRESSURE TRANSDUCER
- ⊗ TILTMETER

- STRAIN GAUGES ARE TO BE INSTALLED AND TESTED FOR PROPER FUNCTIONING BEFORE ANGLE ARE ATTACHED TO PILES
- WELD ANGLE AFTER INSTALLATION OF GAGES

PROJECT: EAST MONTPELIER	PROJECT NO.: BRF 028-3(36)
DESIGN FILE NAME: /98b254/str/sb254instrum.dgn	PLOT DATE: 03-FEB-2009
IPARM FILE NAME: sb254pls.i	DRAWN BY: J. SALVATORI
DESIGNED BY: J. SALVATORI	CHECKED BY: J. LACROIX
SQUAD LEADER: K. HIGGINS	SHEET: 29 OF 68
INSTRUMENTATION PLAN SHEET *3	

NOT TO SCALE