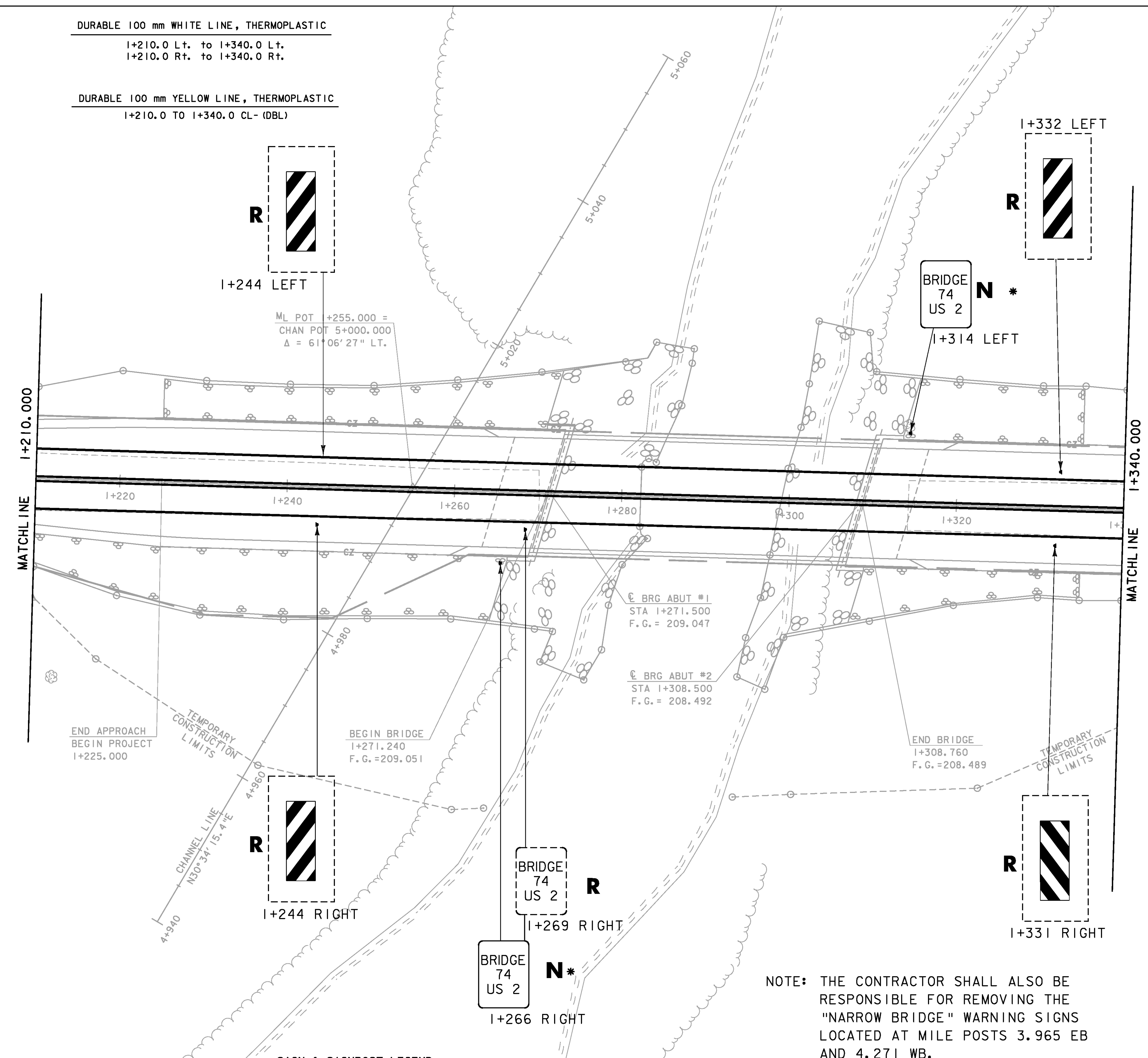


DURABLE 100 mm WHITE LINE, THERMOPLASTIC
 1+210.0 Lt. to 1+340.0 Lt.
 1+210.0 Rt. to 1+340.0 Rt.

DURABLE 100 mm YELLOW LINE, THERMOPLASTIC
 1+210.0 TO 1+340.0 CL- (DBL)



MATCHLINE 1+210.000

MATCHLINE 1+340.000

END APPROACH
 BEGIN PROJECT
 1+225.000

TEMPORARY
 CONSTRUCTION
 LIMITS

BEGIN BRIDGE
 1+271.240
 F.G. = 209.051

BRG ABUT #1
 STA 1+271.500
 F.G. = 209.047

BRG ABUT #2
 STA 1+308.500
 F.G. = 208.492

END BRIDGE
 1+308.760
 F.G. = 208.489

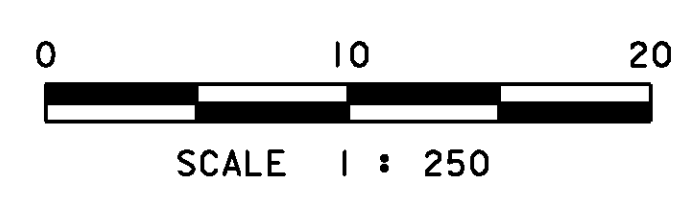
TEMPORARY
 CONSTRUCTION
 LIMITS

SIGN & SIGNPOST LEGEND

ALL SIGNS AND POSTS WILL BE
 NEW UNLESS OTHERWISE NOTED:

- N - NEW
- R - REMOVE
- S - SALVAGE
- R&S - REMOVE & SALVAGE
- RET - RETAIN

NOTE: THE CONTRACTOR SHALL ALSO BE
 RESPONSIBLE FOR REMOVING THE
 "NARROW BRIDGE" WARNING SIGNS
 LOCATED AT MILE POSTS 3.965 EB
 AND 4.271 WB.



DATUM
 VERTICAL NAVD 88
 HORIZONTAL NAD 83 (96)

PROJECT: EAST MONTEPELIER	PROJECT NO.: BRF 028-3(36)
DESIGN FILE NAME: /98b254/str/sb254bdr.dgn	PLOT DATE: 03-FEB-2009
IPARM FILE NAME: sb254pm2.i	DRAWN BY: R. PELLETT
DESIGNED BY: J. LACROIX	CHECKED BY: J. LACROIX
SQUAD LEADER: K. HIGGINS	SHEET: 17 OF 68
SIGNS & PAVEMENT MARKINGS SHEET #2	