

GPS CONTROL POINTS

**HVCTRL # 1**

Standard Disk Stamped

Kingsbury  
 NORTH = 197200.859  
 EAST = 504349.789  
 ELEV. = 208.606

To reach from the junction of VT route 14 and US route 2 in East Montpelier, proceed east on route 2 for 2.2 mi to the mark on the left.  
 To reach from the intersection of US route 2 and VT route 14 in Plainfield go west along route 2 for 0.6mi to the mark on the right.  
 The mark is set 2cm (.75in) below ground surface in the top of a 25cm (8in) diameter concrete monument. It is 14.6m (47.9ft) north of and about 0.5m (1.6ft) lower than the centerline of route 2, 37.1m (121.7ft) west of the centerline of a gravel field drive, 16.7m (54.8ft) southwest of a 90cm (3ft) pine, and 0.4m (1.3ft) south of a fiberglass witness post.

**HVCTRL # 2**

Standard Disk Stamped

Kingsbury Az Mk  
 NORTH = 196957.866  
 EAST = 503784.961  
 ELEV. = 222.952

To reach from the junction of VT route 14 and US route 2 in East Montpelier, proceed east on route 2 for 1.85mi to the mark on the left, in a grass triangle formed by the drives leading to the Plain-Mont Cemetery.  
 To reach from the intersection of US route 2 and VT route 14 in Plainfield go west along route 2 for 1.0mi to the mark on the right in a grass triangle formed by the paved drives leading to the Plain-Mont Cemetery  
 The mark is set flush with the ground surface in the top of a 30cm (1ft) diameter concrete monument. It is 22.8m (74.8ft) north of and about 1.5m (4.9ft) higher than the centerline of route 2, 7.3m (24.0ft) west of the most easterly paved entrance drive to the Plain-Mont Cemetery, 40.0m (131.2ft) southwest of center of entrance gate to cemetery, and 20.3m (66.6ft) east of a fiberglass witness post at the angle point in a chain link and woven wire fence.

\* Description provided by Vermont Agency of Transportation Geodetic Survey Unit

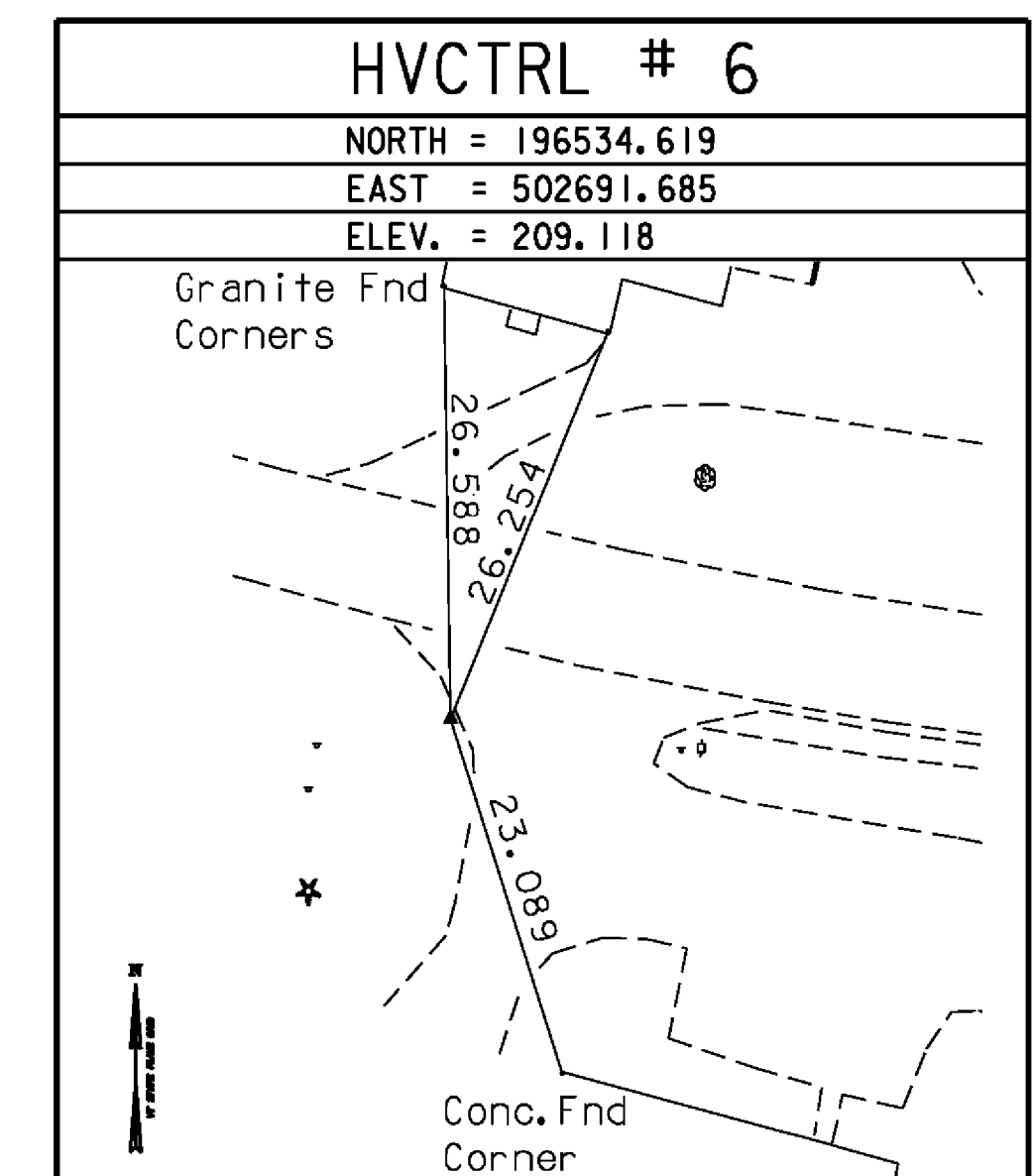
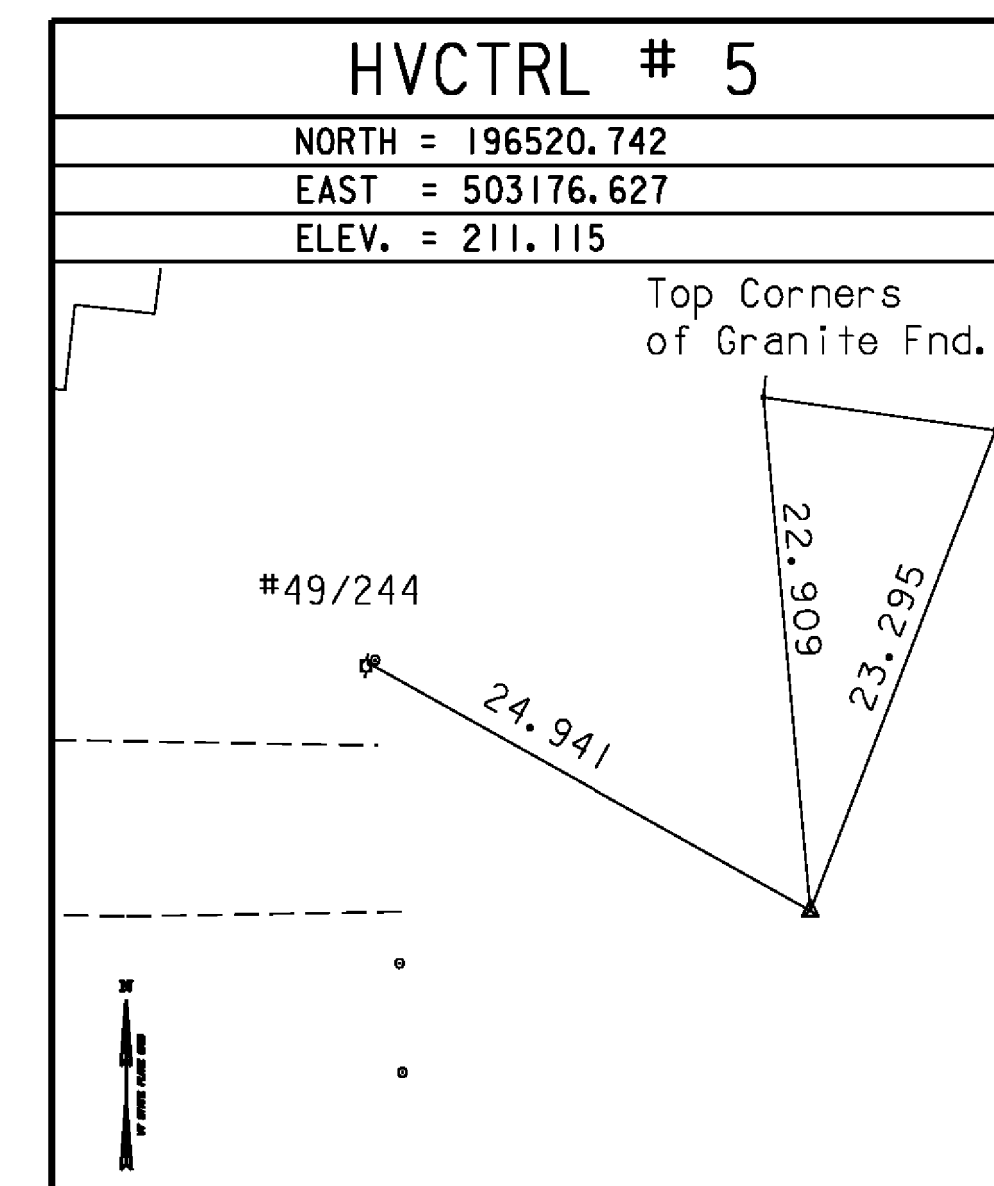
**BM# 7**

Standard Disk Stamped

A96005  
 NORTH = 196501.901  
 EAST = 502755.485  
 ELEV. = 209.409

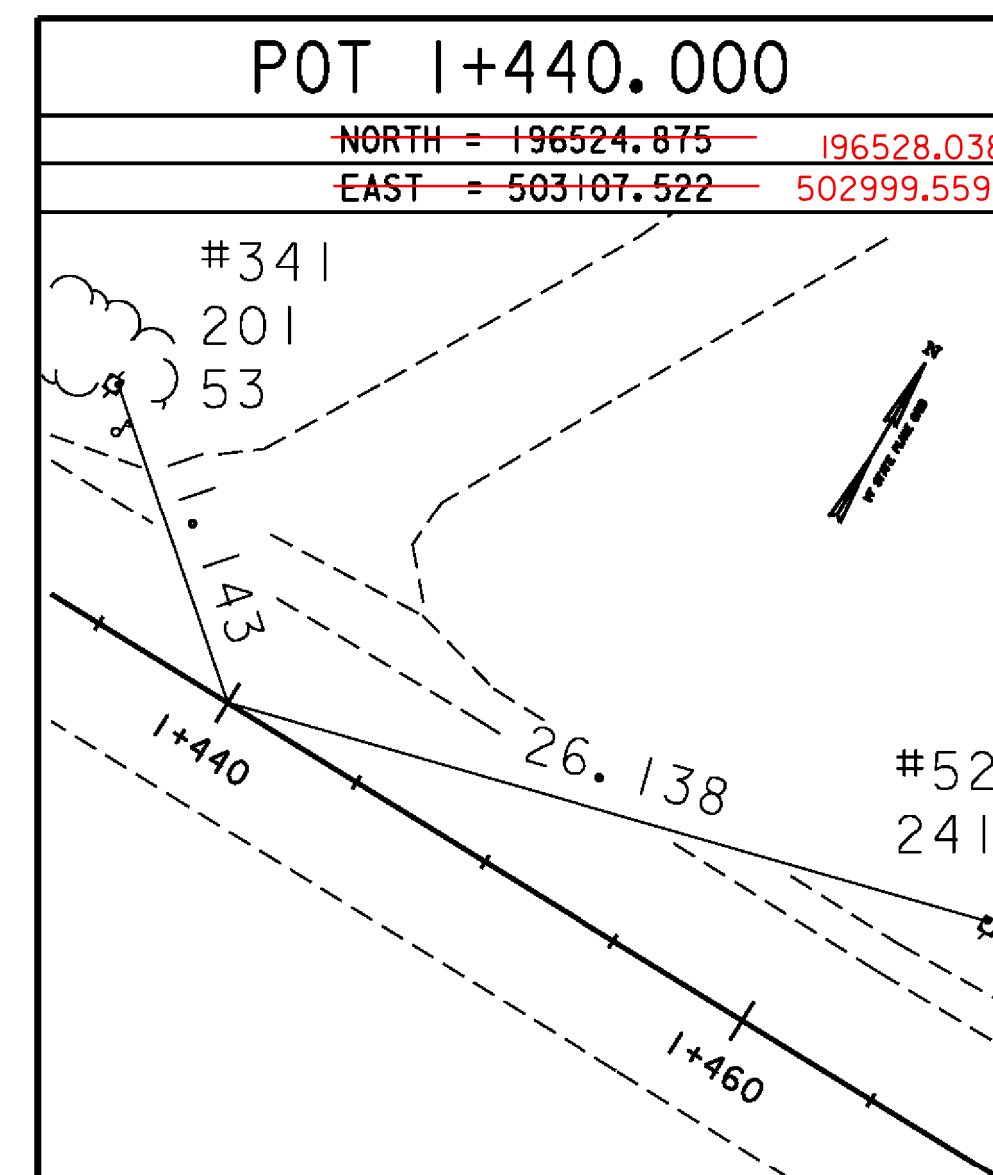
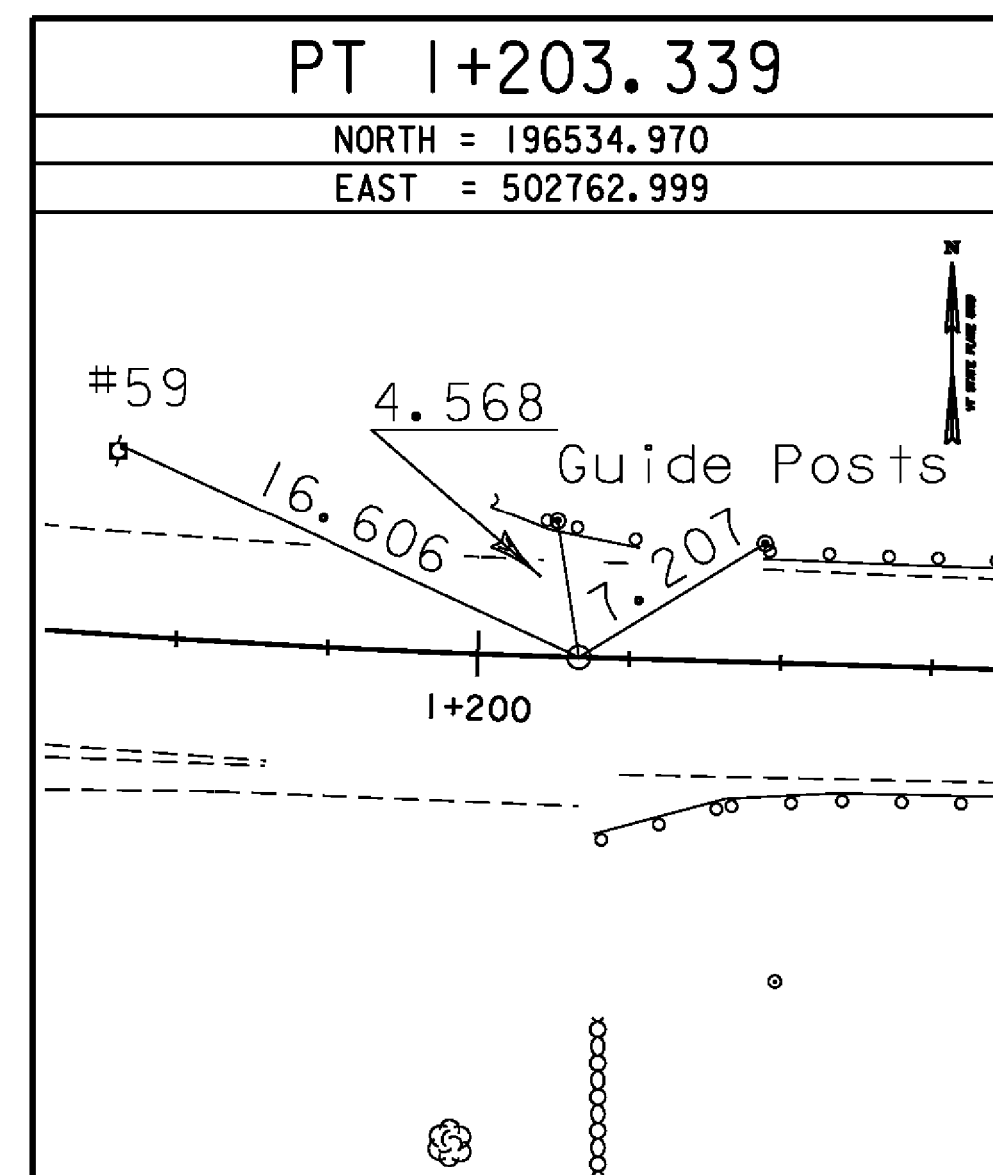
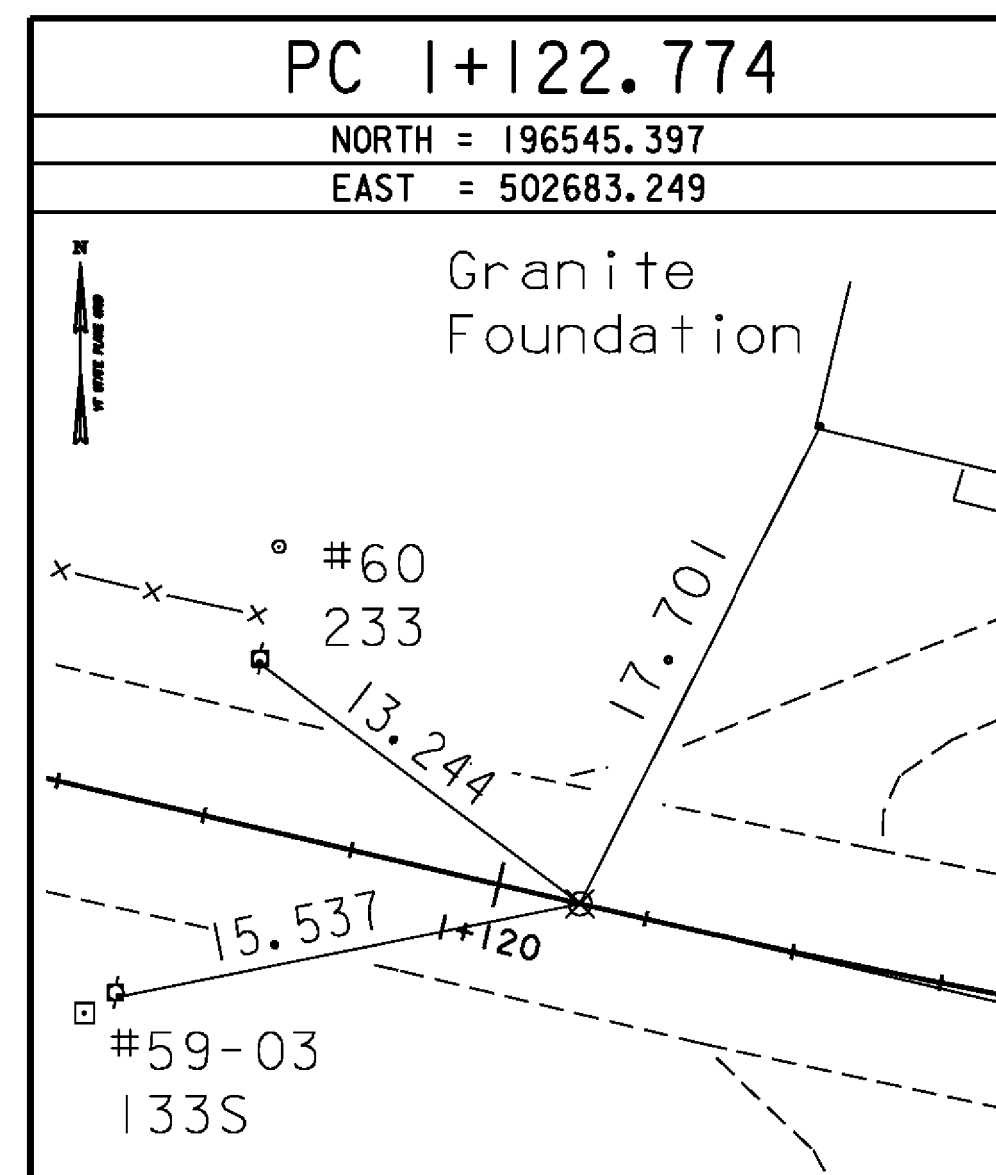
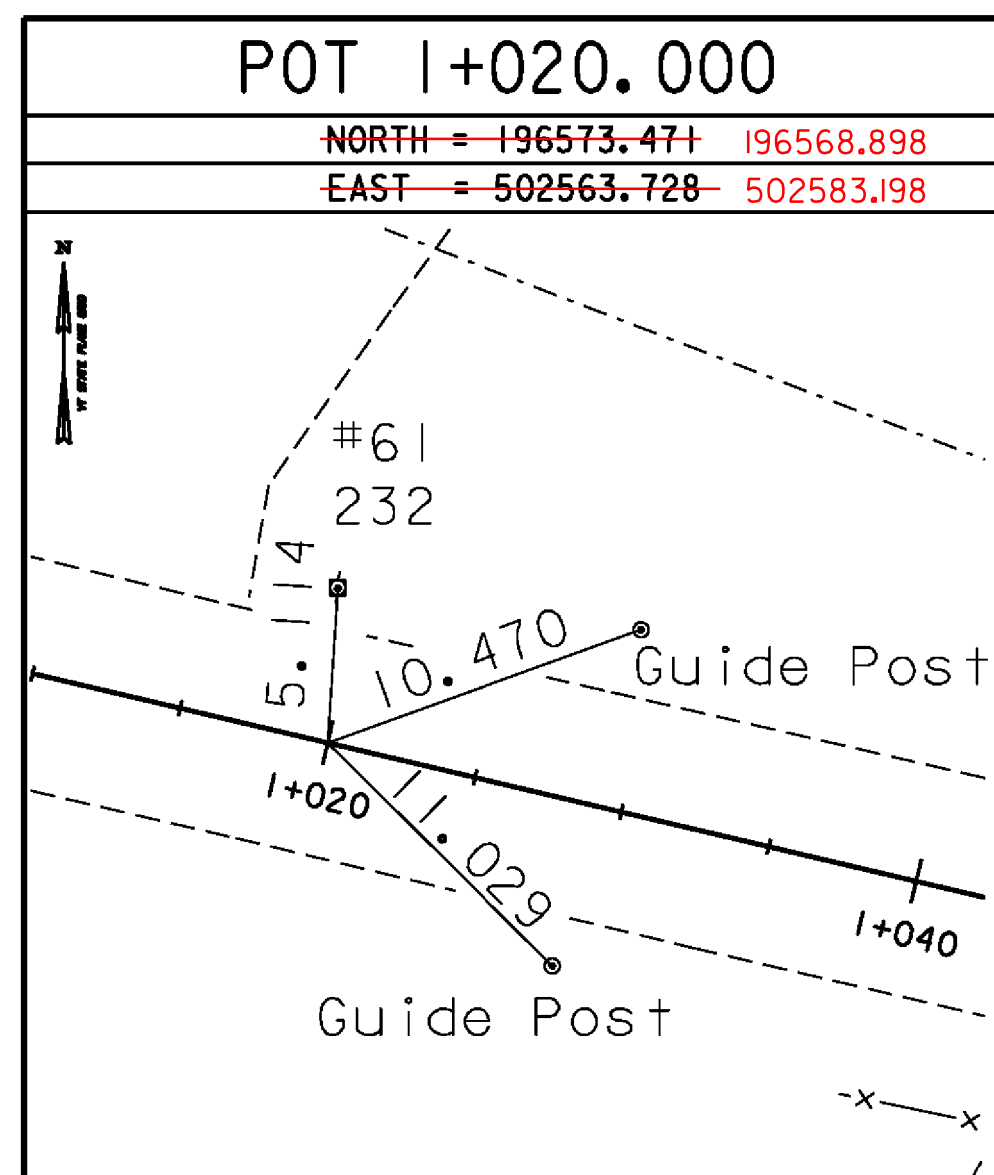
To reach from the intersection of U.S. route 2 and VT route 14 north in East Montpelier Village go east along route 2 for 1.1 mi to the Furniture Barn on the right and the mark on the right in a lawn east of the building. It is about 100m (328.1ft) west of the route 2 bridge over the Winooski River.  
 To reach from the intersection of U.S. route 2 and VT route 214 in Plainfield, go west along route 2 for 1.7mi to the site of mark.  
 The mark is set flush with ground surface in the top of a 30cm (1ft) diameter concrete monument. It is 33.0m (108.3ft) south of and about level with the centerline of route 2, 32.8m (107.6ft) east of the northeast foundation corner of the furniture barn, 24.9m (81.7ft) southeast of pole no. 59/01/2345, and 3.9m (12.8ft) west of a fiberglass witness post.  
 NOTE: This point is intervisible with mark A96004.

TRAVERSE TIES



\* Main Traverse Completed 10-12-99 by R. Gilman P.C. & R. Bullock & G. Hitchcock

ALIGNMENT TIES



\* Alignment Staked 05/22/03 by R. Gilman P.C. & P. Winters & A. Somaini

DATUM	
VERTICAL	NAVD 88
HORIZONTAL	NAD 83 (96)
ADJUSTMENT	Compass

PROJECT: <b>EAST MONTPELIER</b>	PROJECT NO. : <b>BRF 028-3(36)</b>
DESIGN FILE NAME: /98b254/str/sb254t1e.dgn	PLOT DATE: 03-FEB-2009
IPARM FILE NAME: sb254t1e.l	DRAWN BY: R. BULLOCK
DESIGNED BY: R. GILMAN	CHECKED BY: J. LACROIX
SQUAD LEADER: K. HIGGINS	SHEET: 8 OF 68
TIE SHEET	